

PROJECT TITLE:

**Dióxido de Nitrogênio -  $\mu\text{g}/\text{m}^3$**   
**Máx. 1h - ano 2010 - Malha 500 m**

COMMENTS:

Fontes consideradas:  
UTE PAMPA SUL

SOURCES:

**8**

RECEPTORS:

**2500**

OUTPUT TYPE:

**Concentration**

MAX:

**99,7  $\mu\text{g}/\text{m}^3$**

COMPANY NAME:

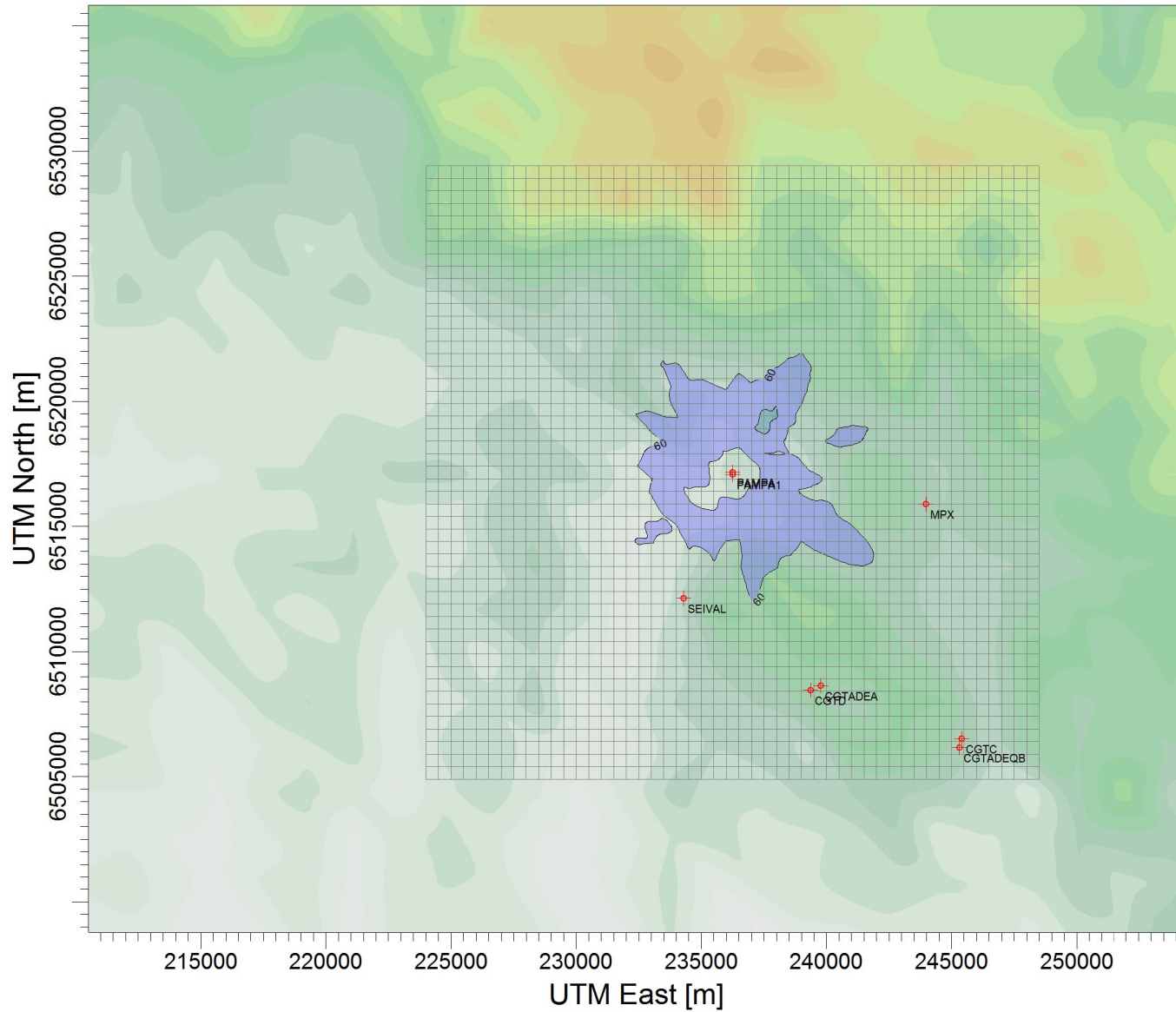
SCALE:

1:262.666

0 5 km

PROJECT NO.:

**d) 500 m**



$\mu\text{g}/\text{m}^3$

PLOT FILE OF HIGH 1ST HIGH 1-HR VALUES FOR SOURCE GROUP: PAMPA  
Max: 99,7 [ $\mu\text{g}/\text{m}^3$ ] at (237499,00, 6518904,00)