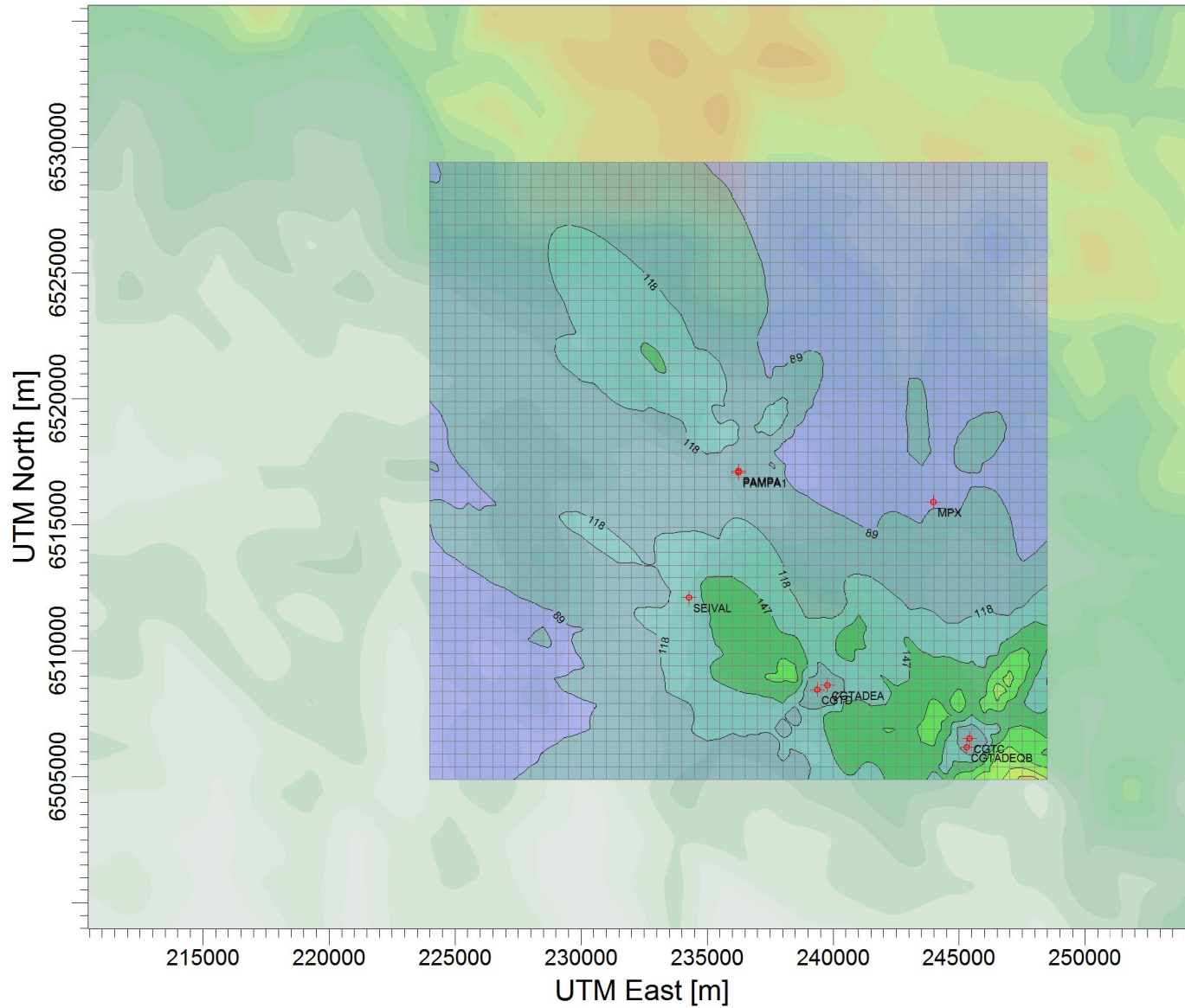
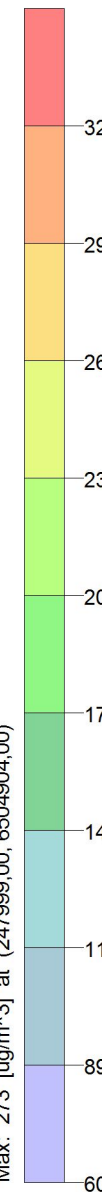


PROJECT TITLE:

Dióxido de Nitrogênio - µg/m³
Máx. 1h - ano 2010 - Malha 500 m



ug/m³



PLOT FILE OF HIGH 1ST HIGH 1-HR VALUES FOR SOURCE GROUP: ALL

Max: 273 [ug/m³] at (247999,00; 6504904,00)

COMMENTS:

Fontes consideradas:
UTE PAMPA SUL
UTE CGTEE com adequações da fase A e B
UTE CGTEE fase C
UTE CGTEE fase D
UTE Seival
UTE MPX SUL

8

RECEPTORS:

2500

OUTPUT TYPE:

Concentration

MAX:

273 ug/m³

COMPANY NAME:

SCALE:

1:259.923



PROJECT NO.:

c) 500 m