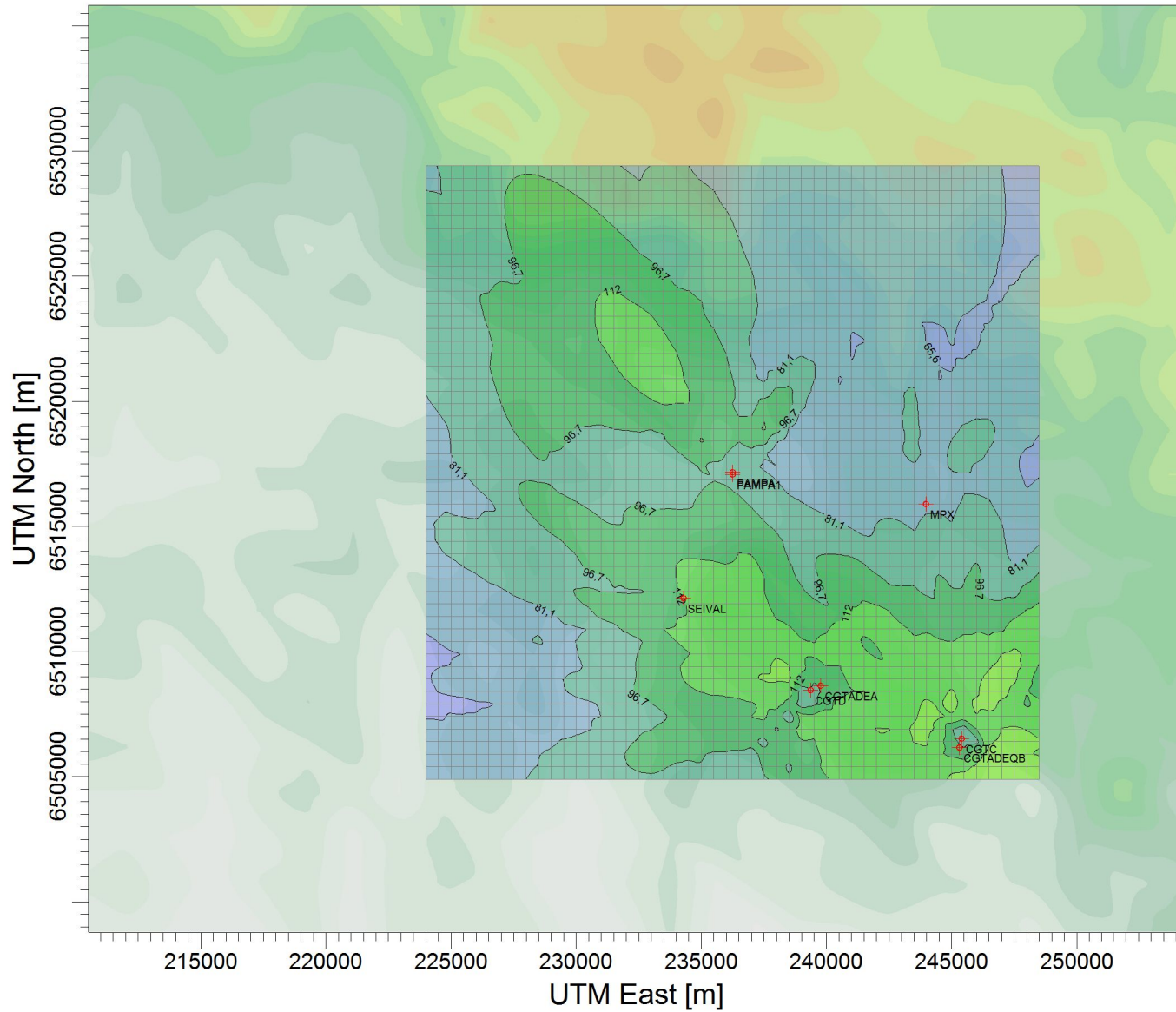


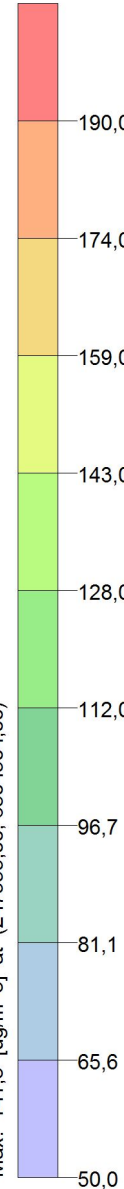
PROJECT TITLE:

Dióxido de Nitrogênio - $\mu\text{g}/\text{m}^3$ - NO_2
Máx. 1h - ano 2010 - Malha 500 m



$\mu\text{g}/\text{m}^3$

PLOT FILE OF HIGH 1ST HIGH 1-HR VALUES FOR SOURCE GROUP: ALL
Max: 141,3 [$\mu\text{g}/\text{m}^3$] at (247999,00, 6504904,00)



COMMENTS:

Fontes consideradas:
UTE PAMPA SUL
UTE CGTEE com adequações da fase A e B
UTE CGTEE fase C
UTE CGTEE fase D
UTE Seival
UTE MPX SUL
SOURCES:

8

RECEPTORS:

2500

OUTPUT TYPE:

Concentration

MAX:

141,3 $\mu\text{g}/\text{m}^3$

COMPANY NAME:

SCALE:

1:262.667



PROJECT NO.:

c) 500 m