

PROJECT TITLE:

Dióxido de Nitrogênio - $\mu\text{g}/\text{m}^3$ - NO₂
Máx. 1h - ano 2010 - Malha 500 m

COMMENTS:

Fontes consideradas:
UTE PAMPA SUL

SOURCES:

8

RECEPTORS:

2500

OUTPUT TYPE:

Concentration

MAX:

83,6 $\mu\text{g}/\text{m}^3$

COMPANY NAME:

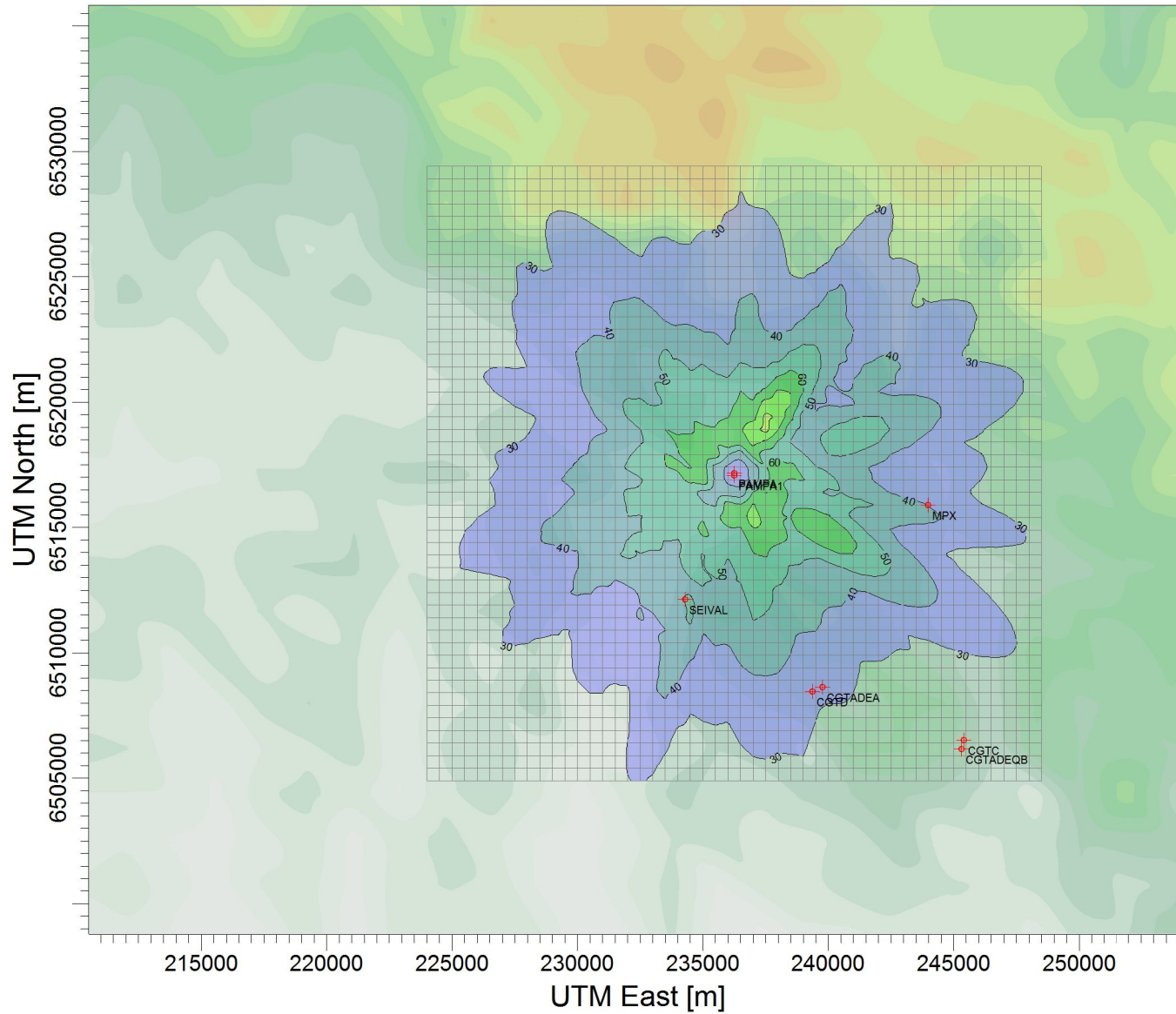
SCALE:

1:262.667

0 5 km

PROJECT NO.:

d) 500 m



$\mu\text{g}/\text{m}^3$

PLOT FILE OF HIGH 1ST HIGH 1-HR VALUES FOR SOURCE GROUP: PAMPA
Max: 83,6 [$\mu\text{g}/\text{m}^3$] at (237499,00, 6518904,00)