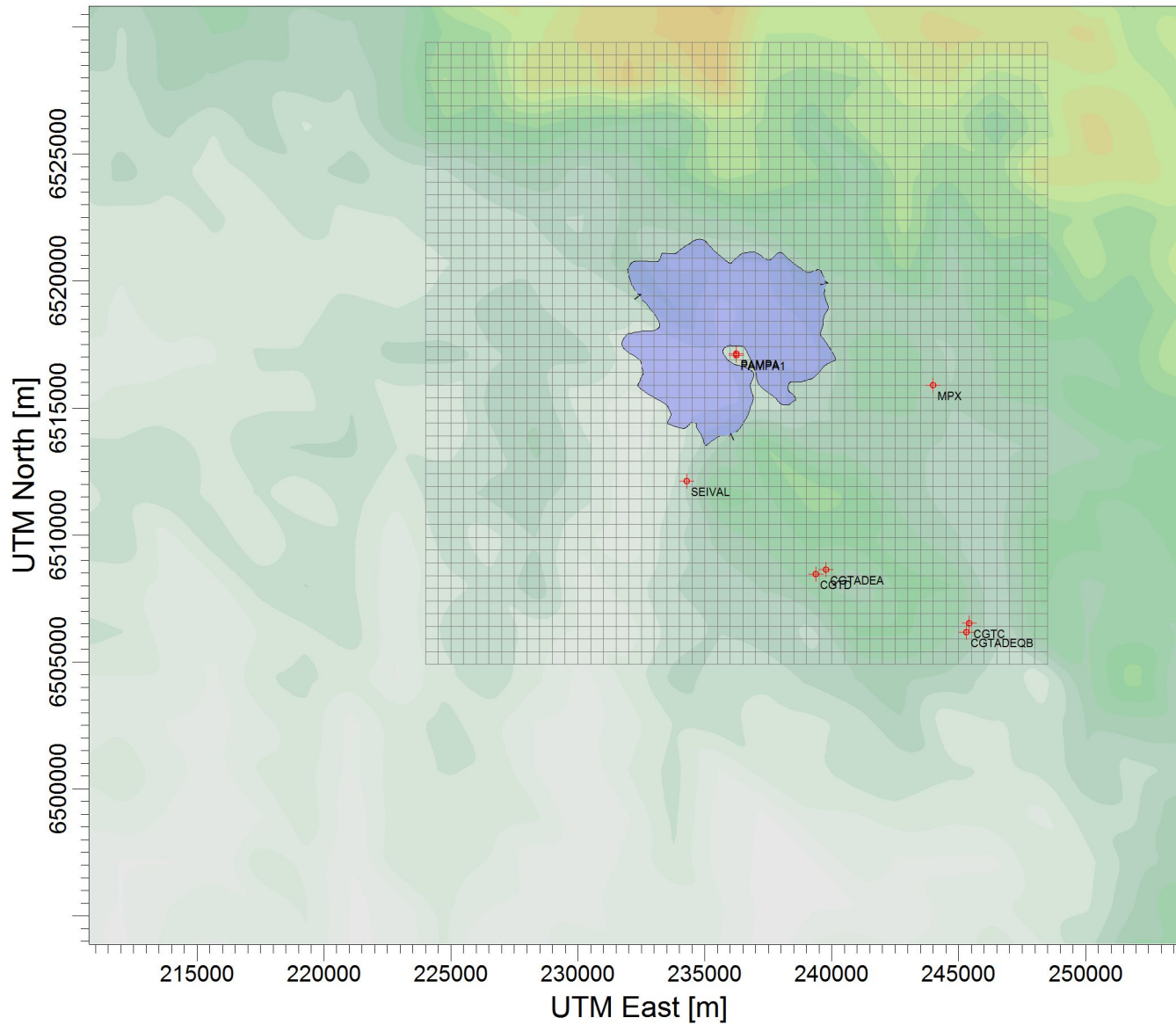


PROJECT TITLE:

**Material Particulado -  $\mu\text{g}/\text{m}^3$**   
**Média 24h - ano 2010 - Malha 500 m**

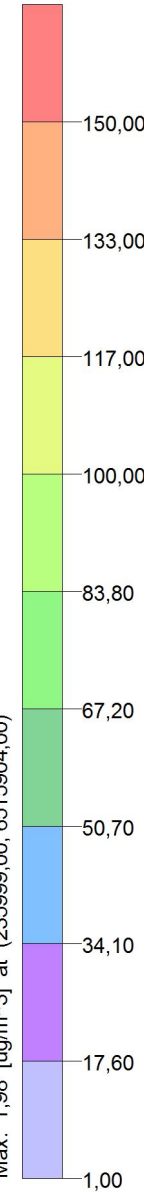
COMMENTS:

Fontes consideradas:  
UTE PAMPA SUL



$\mu\text{g}/\text{m}^3$

PLOT FILE OF HIGH 1ST HIGH 24-HR VALUES FOR SOURCE GROUP: PAMPA  
Max: 1,98 [ $\mu\text{g}/\text{m}^3$ ] at (235999,00, 6515904,00)



SOURCES:

**8**

RECEPTORS:

**2500**

OUTPUT TYPE:

**Concentration**

MAX:

**1,98  $\mu\text{g}/\text{m}^3$**

COMPANY NAME:

SCALE:

1:262.006



PROJECT NO.:

**d) 500 m**