

PROJECT TITLE:

Dióxido de Nitrogênio - $\mu\text{g}/\text{m}^3$
Máx. 1h - ano 2010 - Malha 2 km

COMMENTS:

Fontes consideradas:
UTE PAMPA SUL

SOURCES:

8

RECEPTORS:

1250

OUTPUT TYPE:

Concentration

MAX:

75,0 $\mu\text{g}/\text{m}^3$

COMPANY NAME:

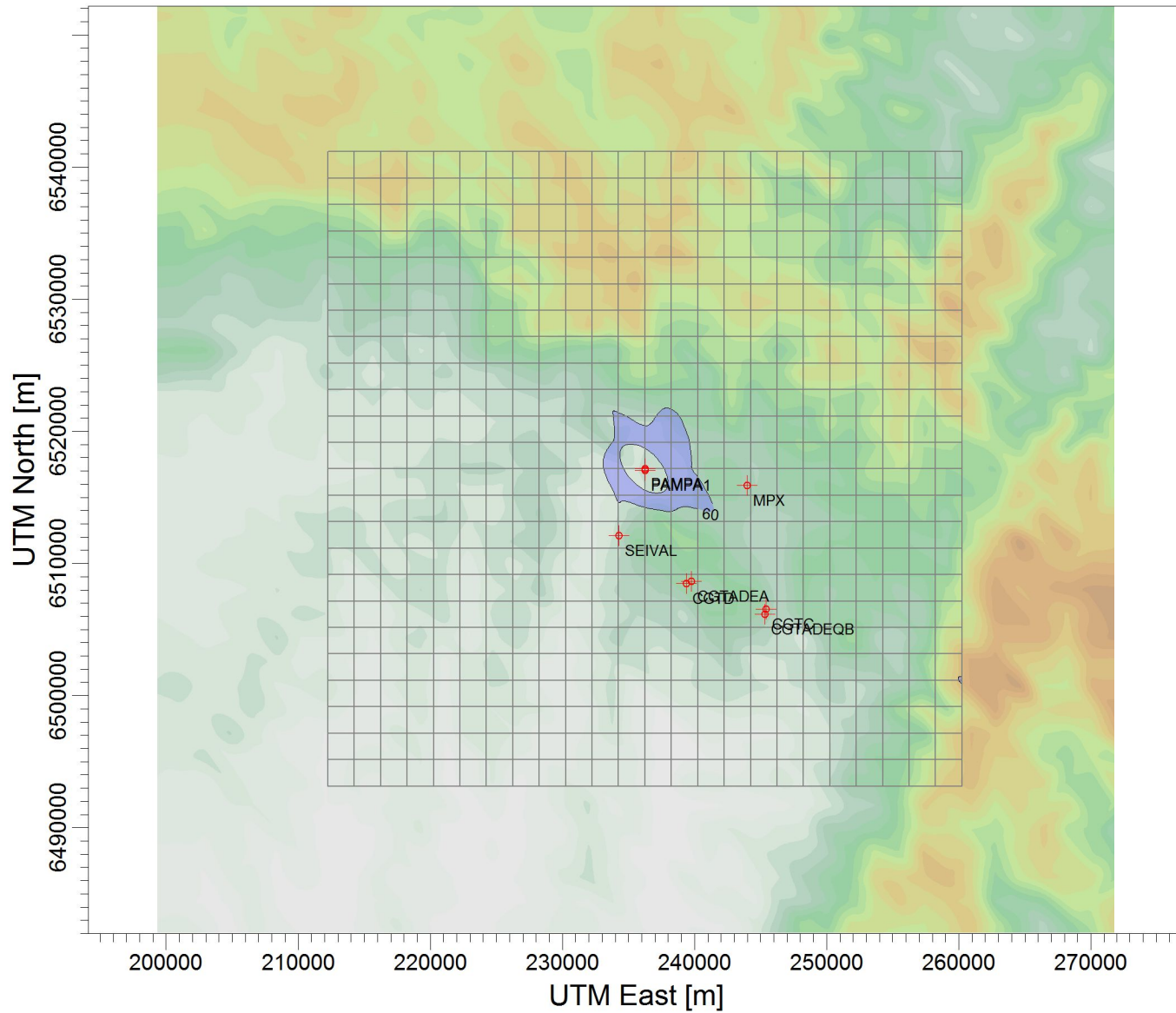
SCALE:

1:497.574

0 10 km

PROJECT NO.:

d) 2 km



$\mu\text{g}/\text{m}^3$

PLOT FILE OF HIGH 1ST HIGH 1-HR VALUES FOR SOURCE GROUP: PAMPA
Max: 75,0 [$\mu\text{g}/\text{m}^3$] at (238249,00, 6519154,00)

