

PROJECT TITLE:

**Material Particulado -  $\mu\text{g}/\text{m}^3$**   
**Média 24h - ano 2010 - Malha 2 km**

COMMENTS:

Fontes consideradas:  
UTE PAMPA SUL

SOURCES:

**8**

RECEPTORS:

**1250**

OUTPUT TYPE:

**Concentration**

MAX:

**1,64  $\mu\text{g}/\text{m}^3$**

COMPANY NAME:

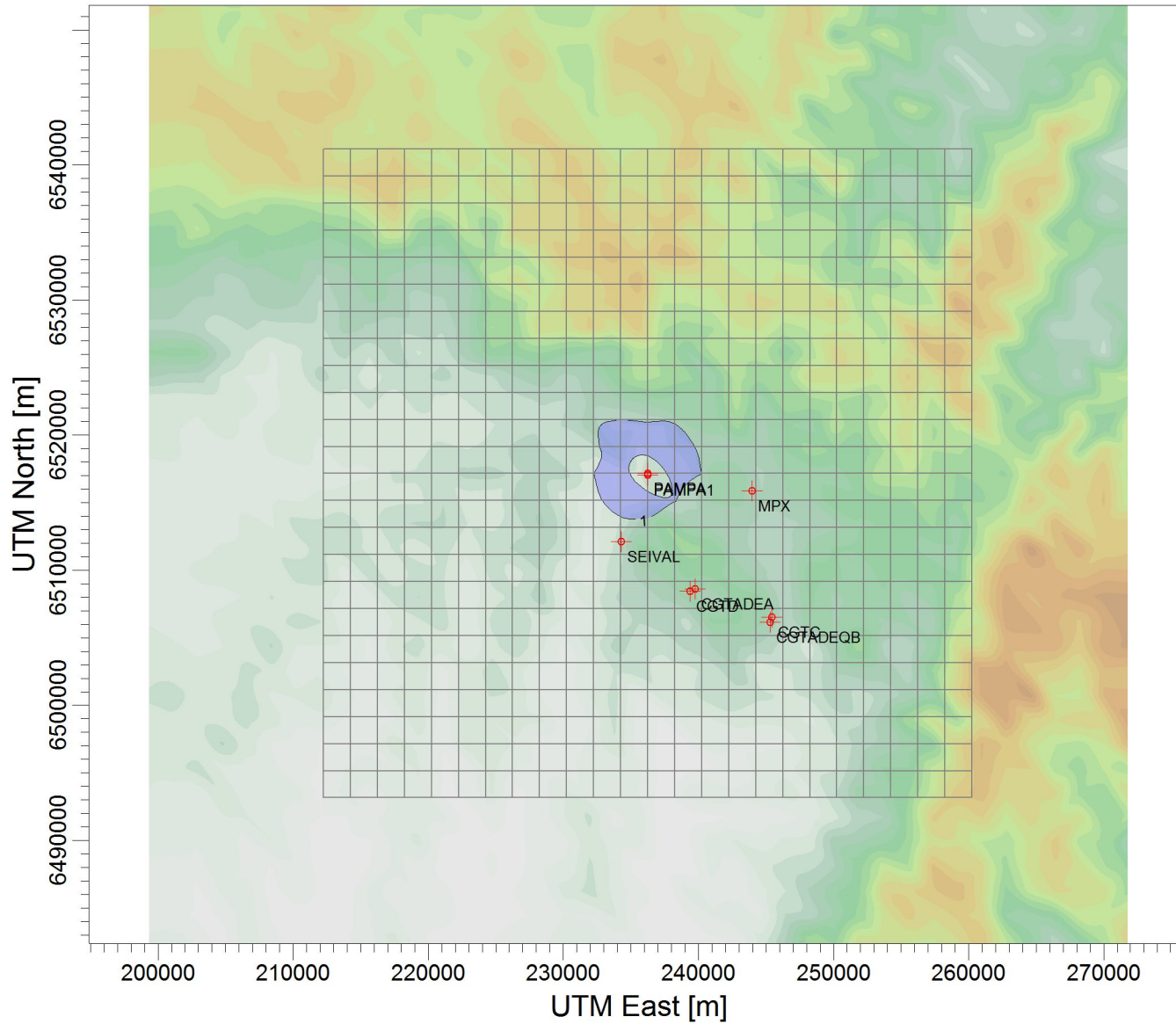
SCALE:

1:492.395

0 10 km

PROJECT NO.:

**a) 2 km**



$\mu\text{g}/\text{m}^3$

PLOT FILE OF HIGH 1ST HIGH 24-HR VALUES FOR SOURCE GROUP: PAMPA  
Max: 1,64 [ $\mu\text{g}/\text{m}^3$ ] at (234249,00, 6519154,00)

