

PROJECT TITLE:

Dióxido de Nitrogênio - $\mu\text{g}/\text{m}^3$
Máx. 1h - ano 2010 - Terreno complexo

COMMENTS:

Fontes consideradas:
UTE PAMPA SUL

SOURCES:

2

RECEPTORS:

9800

OUTPUT TYPE:

Concentration

MAX:

95,3 $\mu\text{g}/\text{m}^3$

COMPANY NAME:

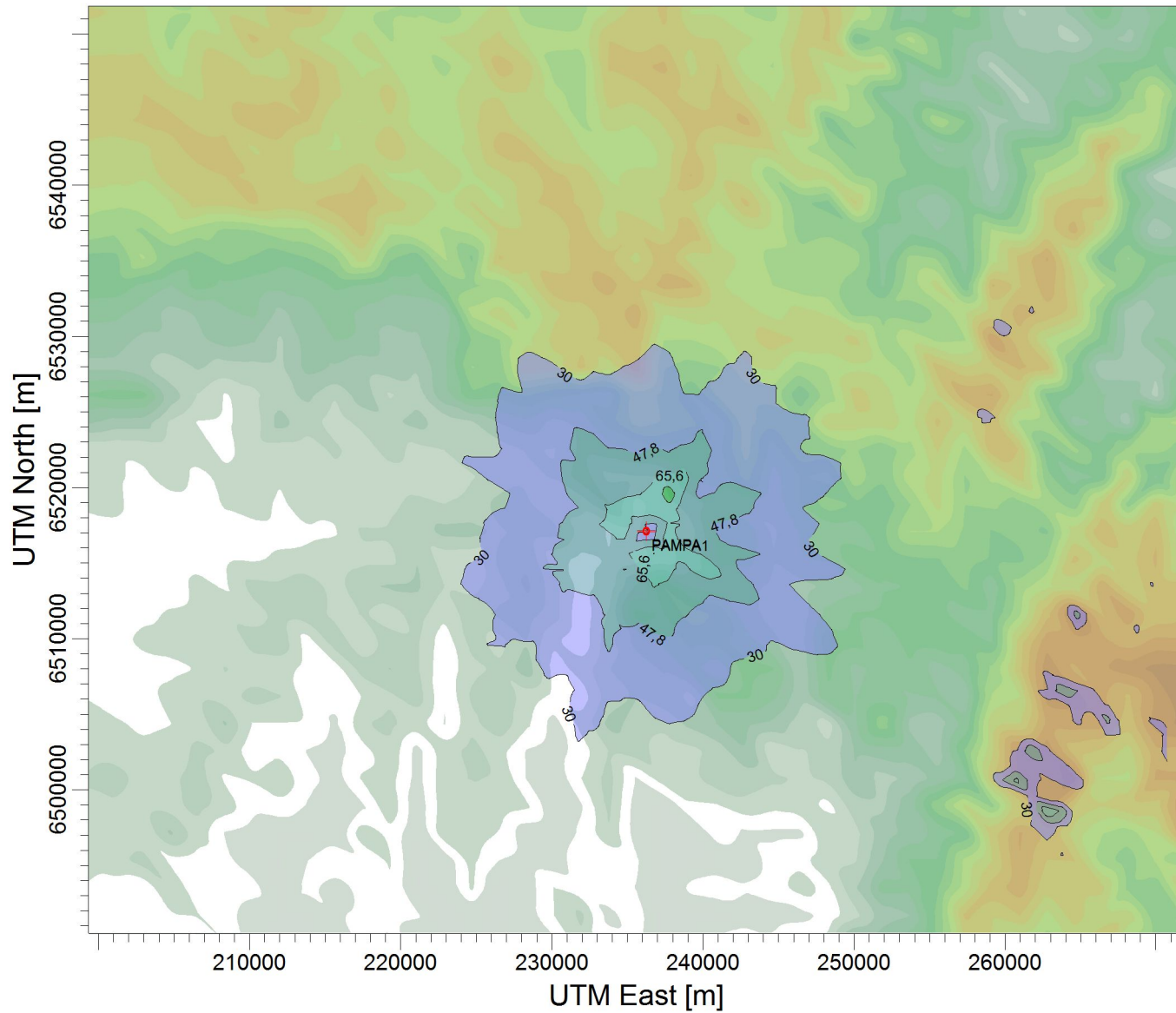
SCALE:

1:434.992



PROJECT NO.:

4.C



$\mu\text{g}/\text{m}^3$

PLOT FILE OF HIGH 1ST HIGH 1-HR VALUES FOR SOURCE GROUP: ALL

Max: 95,3 [$\mu\text{g}/\text{m}^3$] at (237749,00, 6519569,00)

