

PROJECT TITLE:

**Material Particulado - $\mu\text{g}/\text{m}^3$
Média 24h - ano 2010 - Mín. Temperatura**

COMMENTS:

Fontes consideradas:
UTE PAMPA SUL

SOURCES:

8

RECEPTORS:

9800

OUTPUT TYPE:

Concentration

MAX:

0,895 $\mu\text{g}/\text{m}^3$

COMPANY NAME:

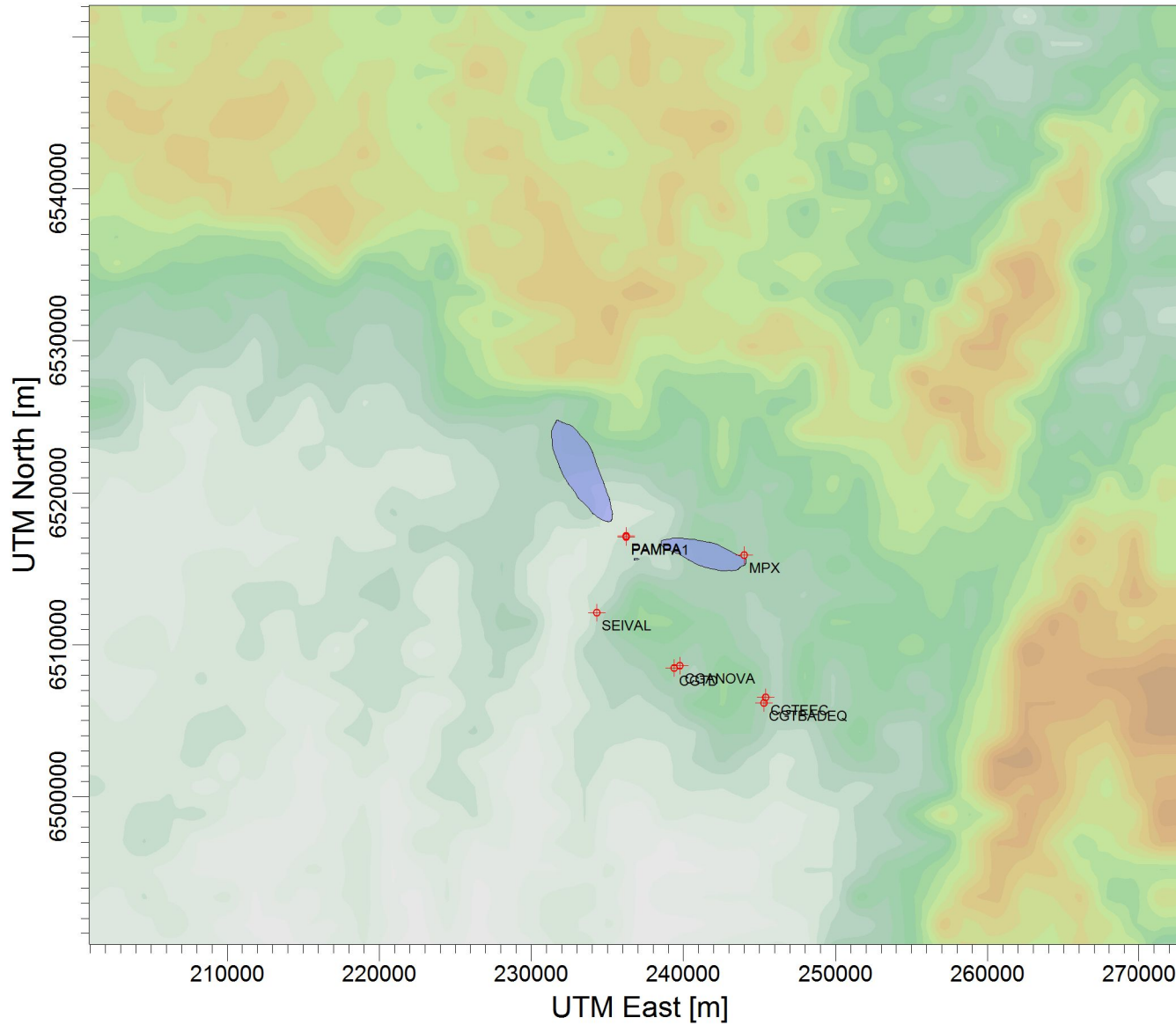
SCALE:

1:438.062

0 10 km

PROJECT NO.:

a) só PAMPA MP



$\mu\text{g}/\text{m}^3$

PLOT FILE OF HIGH 1ST HIGH 24-HR VALUES FOR SOURCE GROUP: PAMPA
Max: 0,895 [$\mu\text{g}/\text{m}^3$] at (234749,00, 6518654,00)

