

PROJECT TITLE:

Dióxido de Nitrogênio - $\mu\text{g}/\text{m}^3$ NOx
Máx. 1h - ano 2010 - Máx. Temperatura

COMMENTS:

Fontes consideradas:
UTE PAMPA SUL

SOURCES:

8

RECEPTORS:

9800

OUTPUT TYPE:

Concentration

MAX:

63,7 $\mu\text{g}/\text{m}^3$

COMPANY NAME:

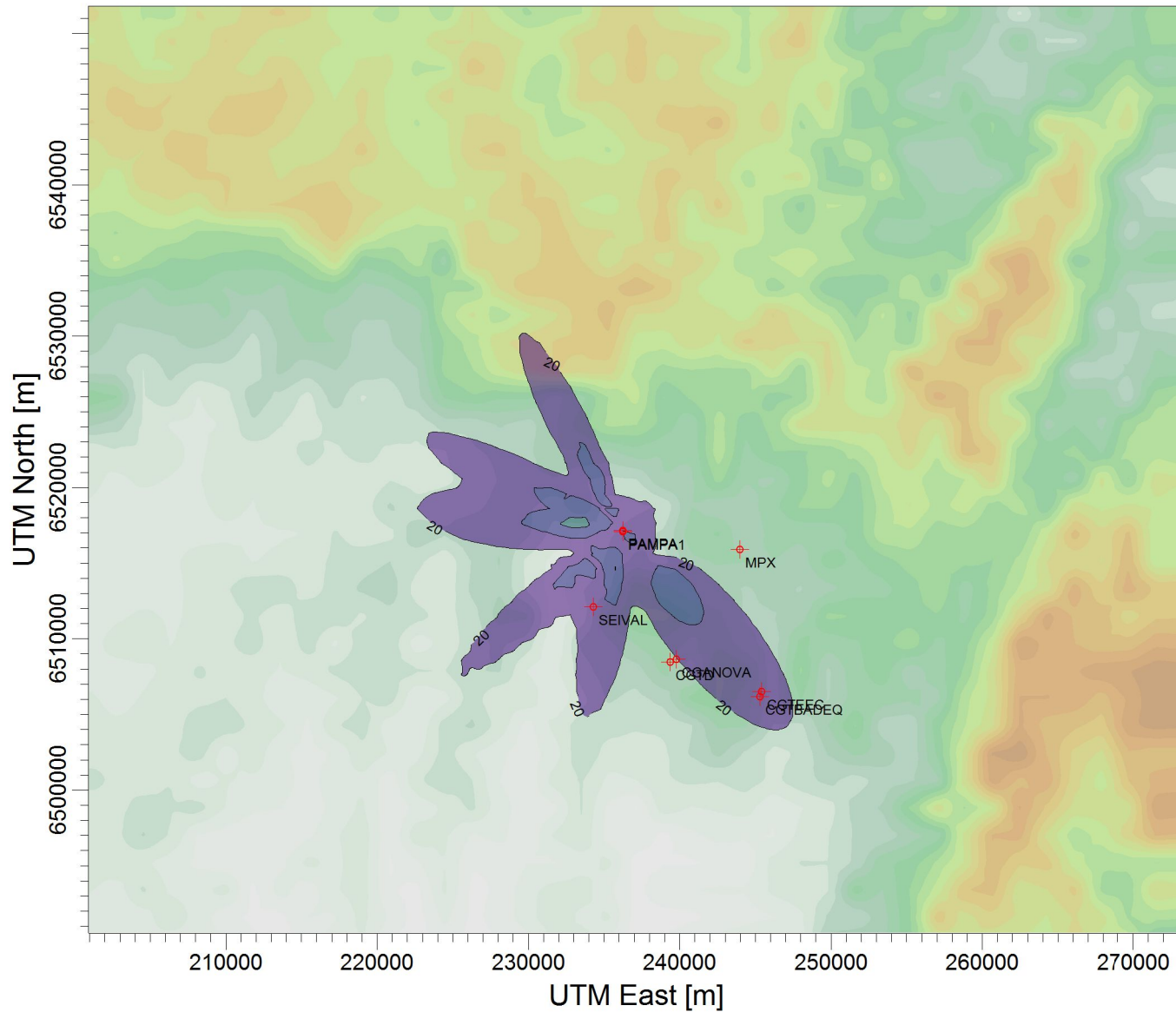
SCALE:

1:434.497

0 10 km

PROJECT NO.:

a) só PAMPA NOx



$\mu\text{g}/\text{m}^3$

PLOT FILE OF HIGH 1ST HIGH 1-HR VALUES FOR SOURCE GROUP: PAMPA
Max: 63,7 [$\mu\text{g}/\text{m}^3$] at (232749,00, 6517569,00)