

PROJECT TITLE:

Dióxido de Nitrogênio - $\mu\text{g}/\text{m}^3$ - NO2
Max. 1h - ano 2010 - carga de 60%

COMMENTS:

Fontes consideradas:
UTE PAMPA SUL

SOURCES:

8

RECEPTORS:

9800

OUTPUT TYPE:

Concentration

MAX:

60,9 $\mu\text{g}/\text{m}^3$

COMPANY NAME:

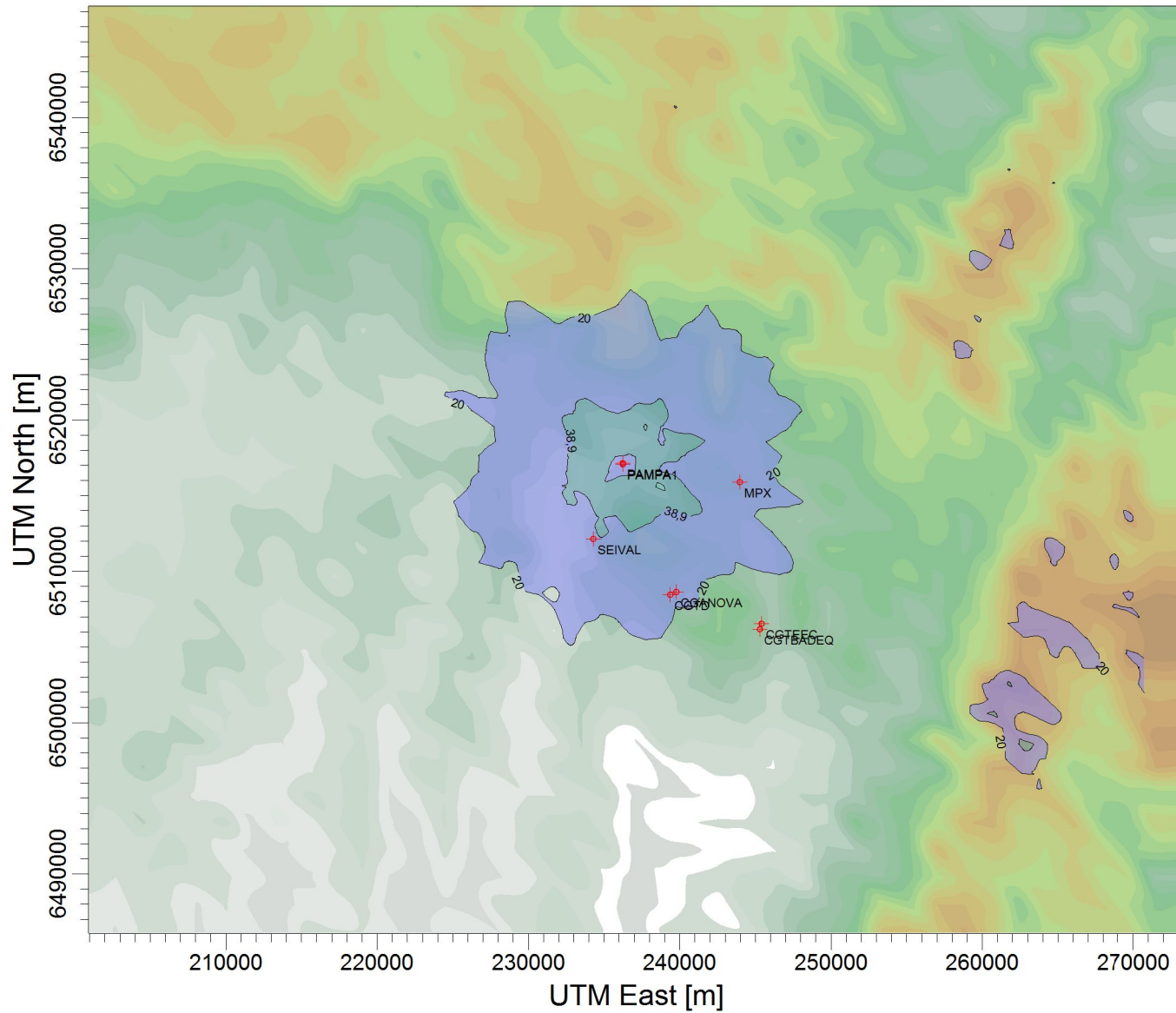
SCALE:

1:434.497

0 10 km

PROJECT NO.:

a1) carga 60 %



$\mu\text{g}/\text{m}^3$

PLOT FILE OF HIGH 1ST HIGH 1-HR VALUES FOR SOURCE GROUP: PAMPA

Max: 60,9 $[\mu\text{g}/\text{m}^3]$ at (238749,00, 6515569,00)

