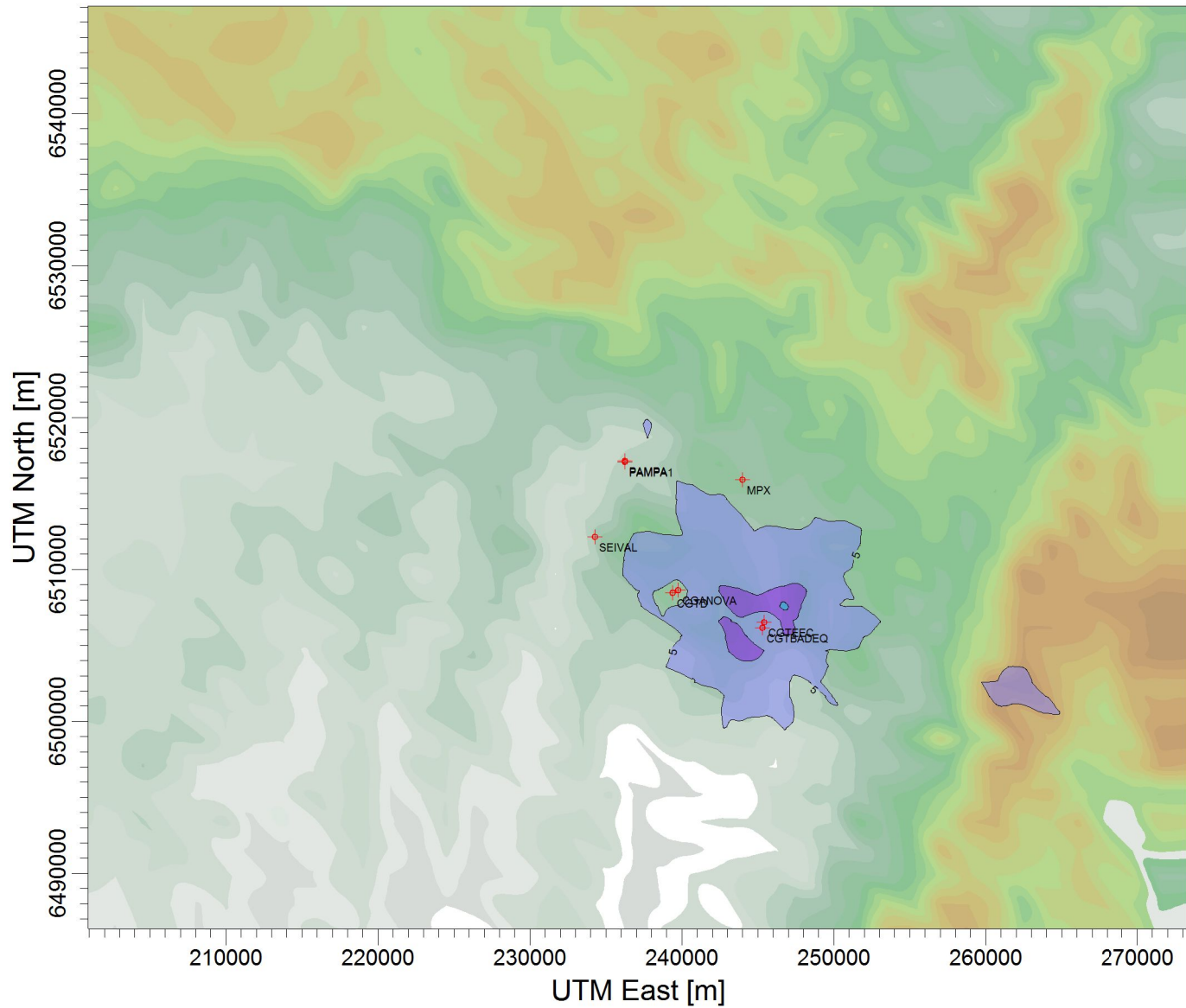
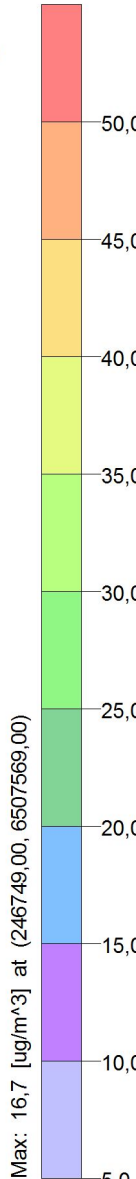



PROJECT TITLE:

**Material Particulado -  $\mu\text{g}/\text{m}^3$   
Média 24h - ano 2010 - 60% de carga**



PLOT FILE OF HIGH 1ST HIGH 24-HR VALUES FOR SOURCE GROUP: TODAS  
Max: 16,7 [ $\mu\text{g}/\text{m}^3$ ] at (246749,00, 6507569,00)



COMMENTS:
Fontes consideradas: UTE PAMPA SUL UTE CGTEE com adequações da fase A e B UTE CGTEE fase C UTE CGTEE fase D UTE Seival UTE MPX SUL
SOURCES:
<b>8</b>
RECEPTORS:
<b>9800</b>
OUTPUT TYPE:
<b>Concentration</b>
MAX:
<b>16,7 <math>\mu\text{g}/\text{m}^3</math></b>
COMPANY NAME:
SCALE: 1:430.555

PROJECT NO.:
<b>d) carga 60%</b>