

PROJECT TITLE:

**Material Particulado -  $\mu\text{g}/\text{m}^3$   
Média 24h - ano 2010 - 60% de carga**

COMMENTS:

Fontes consideradas:  
UTE PAMPA SUL

SOURCES:

**8**

RECEPTORS:

**9800**

OUTPUT TYPE:

**Concentration**

MAX:

**1,76  $\mu\text{g}/\text{m}^3$**

COMPANY NAME:

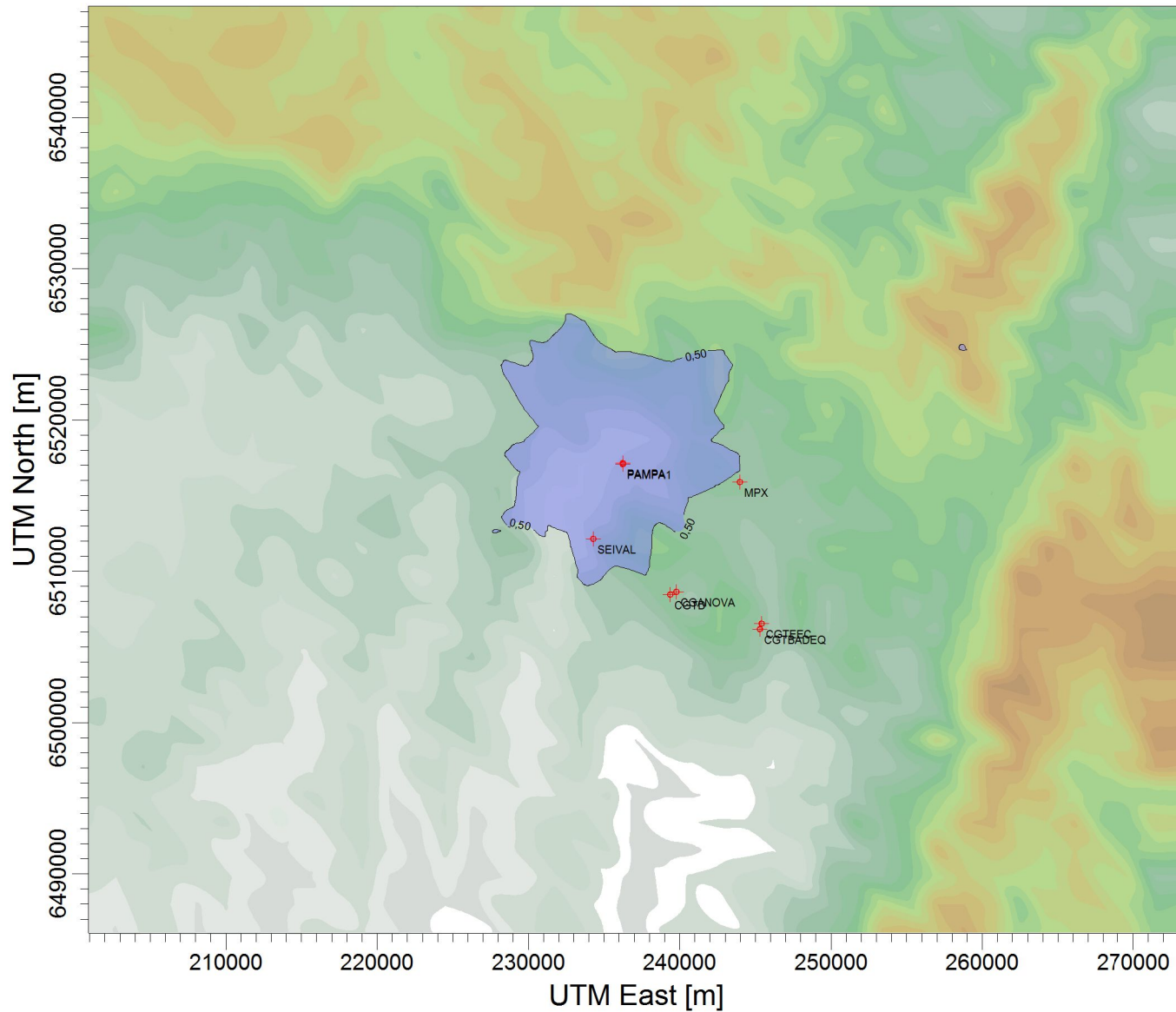
SCALE:

1:434.497

0 10 km

PROJECT NO.:

**c) carga 60%**



$\mu\text{g}/\text{m}^3$

PLOT FILE OF HIGH 1ST HIGH 24-HR VALUES FOR SOURCE GROUP: PAMPA  
Max: 1,76 [ $\mu\text{g}/\text{m}^3$ ] at (237749,00, 6518569,00)

