

PROJECT TITLE:

**Material Particulado - $\mu\text{g}/\text{m}^3$
Média anual - ano 2012**

COMMENTS:

Fontes consideradas:
UTE PAMPA SUL

SOURCES:

8

RECEPTORS:

9800

OUTPUT TYPE:

Concentration

MAX:

0,152 $\mu\text{g}/\text{m}^3$

COMPANY NAME:

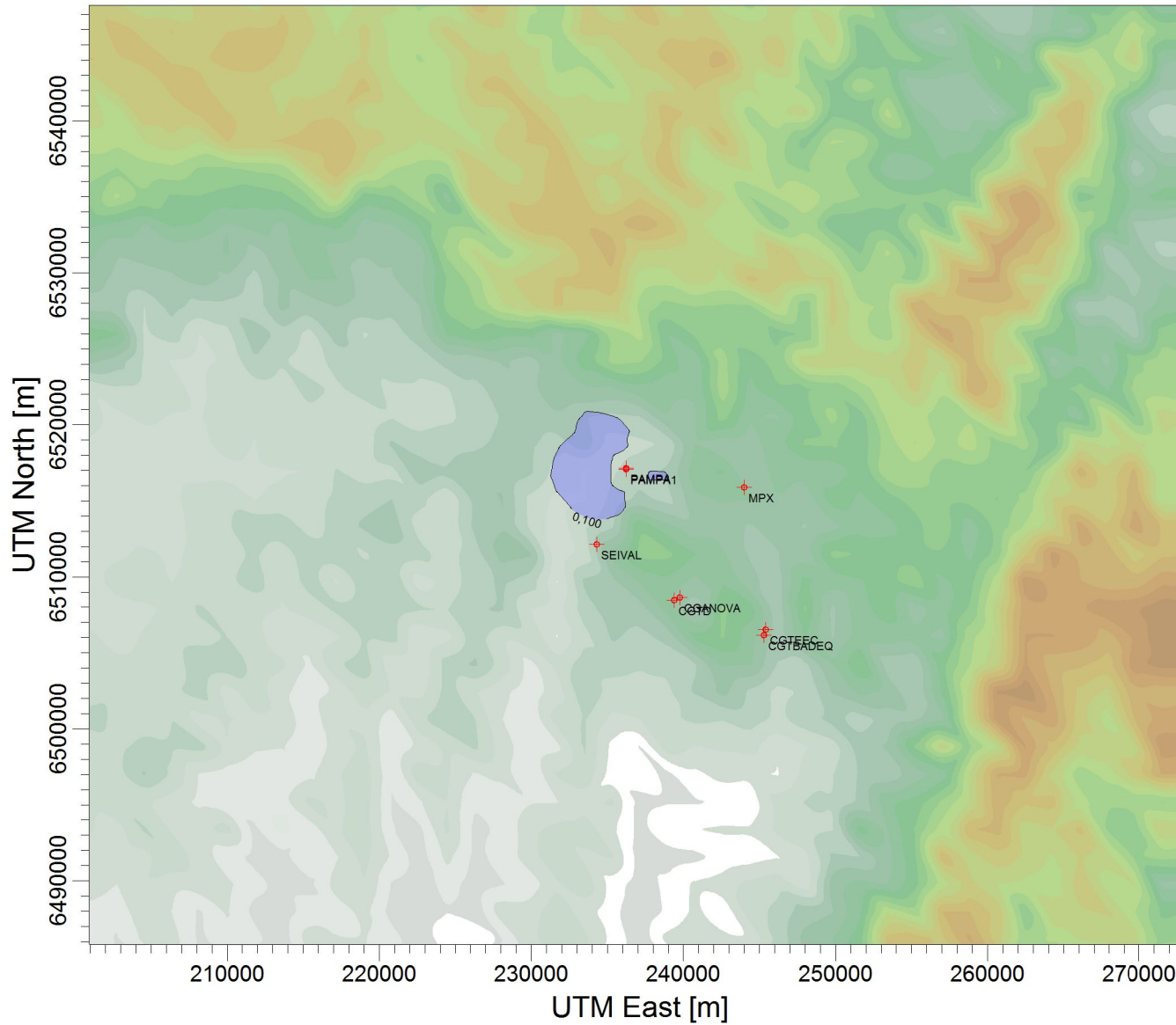
SCALE:

1:438.062

0 10 km

PROJECT NO.:

88



$\mu\text{g}/\text{m}^3$

PLOT FILE OF ANNUAL VALUES FOR SOURCE GROUP: PAMPA
Max: 0,152 [$\mu\text{g}/\text{m}^3$] at (233749,00, 6516654,00)

