

PROJECT TITLE:

**Material Particulado - $\mu\text{g}/\text{m}^3$
Média anual - ano 2009**

COMMENTS:

Fontes consideradas:
UTE PAMPA

SOURCES:

8

RECEPTORS:

9800

OUTPUT TYPE:

Concentration

MAX:

0,219 $\mu\text{g}/\text{m}^3$

COMPANY NAME:

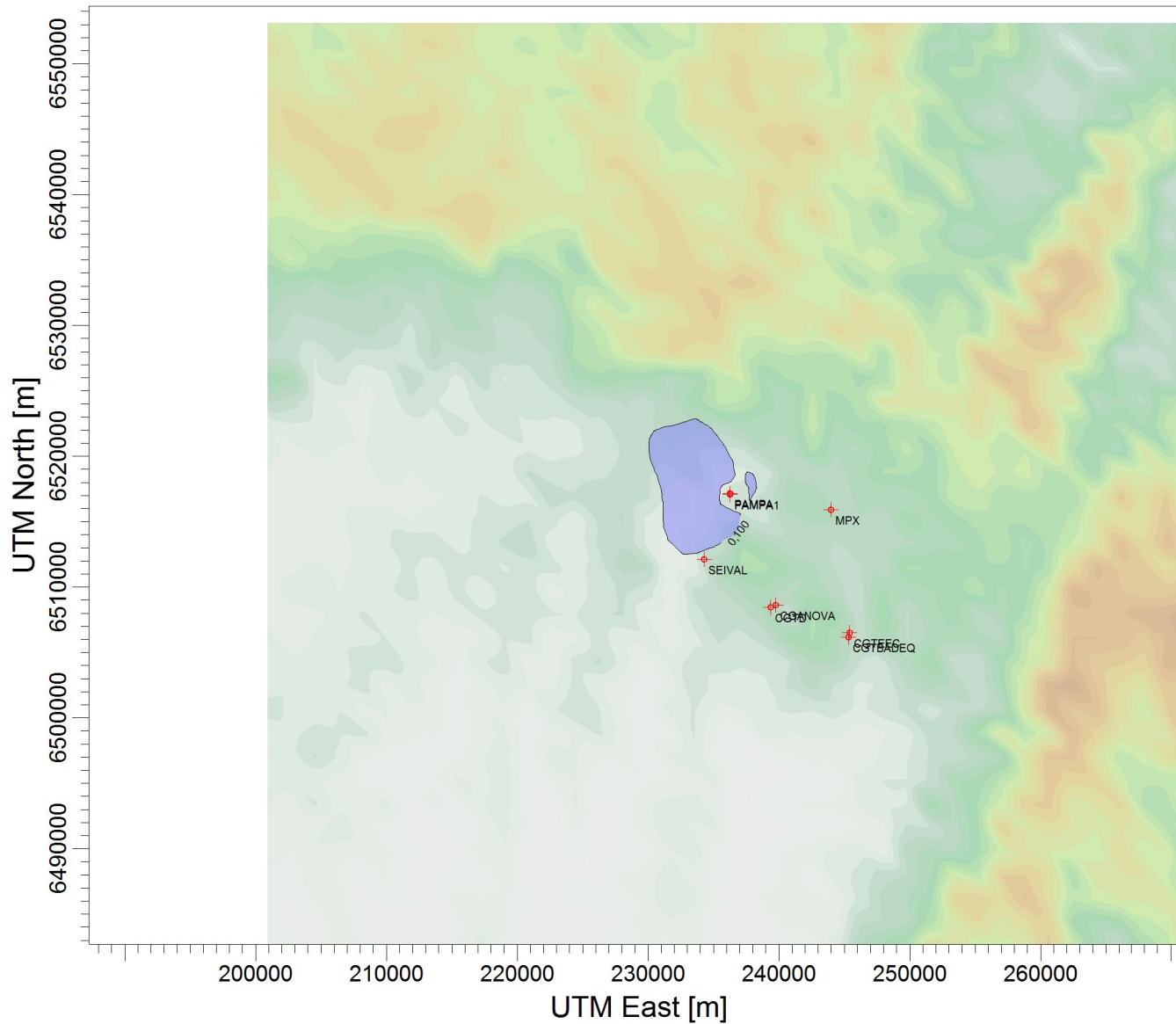
SCALE:

1:508.512



PROJECT NO.:

07



$\mu\text{g}/\text{m}^3$

PLOT FILE OF ANNUAL VALUES FOR SOURCE GROUP: PAMPA
Max: 0,219 [$\mu\text{g}/\text{m}^3$] at (234749,00, 6518569,00)

