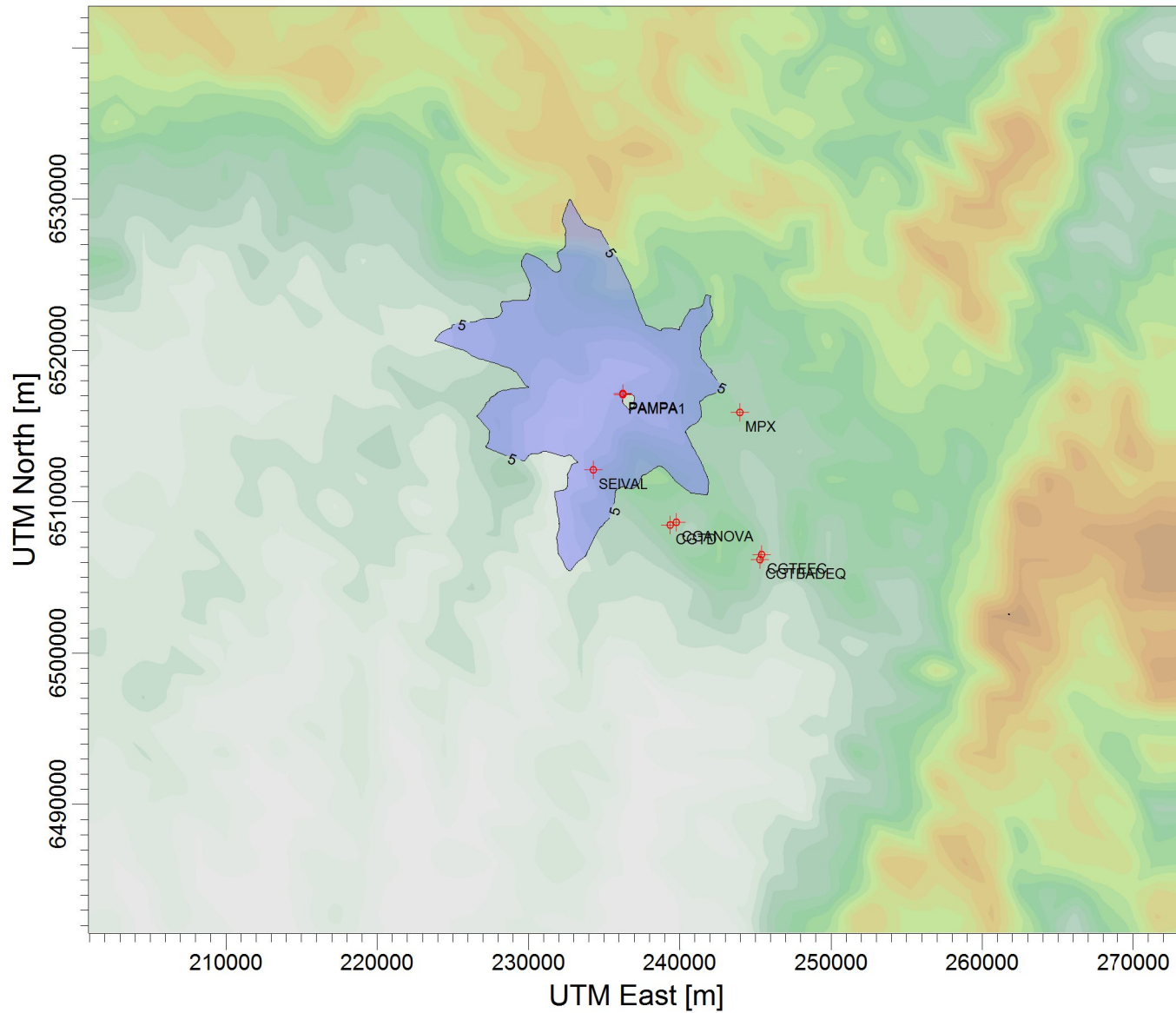


PROJECT TITLE:

Dióxido de Enxofre - $\mu\text{g}/\text{m}^3$
Média 24h - ano 2011

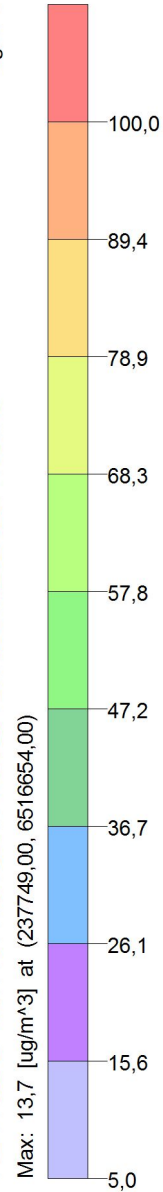
COMMENTS:

Fontes consideradas:
UTE PAMPA SUL



$\mu\text{g}/\text{m}^3$

PLOT FILE OF HIGH 1ST HIGH 24-HR VALUES FOR SOURCE GROUP: PAMPA
Max: 13,7 [$\mu\text{g}/\text{m}^3$] at (237749,00, 6516654,00)



SOURCES:

8

RECEPTORS:

9800

OUTPUT TYPE:

Concentration

MAX:

13,7 $\mu\text{g}/\text{m}^3$

COMPANY NAME:

SCALE:

1:434.497



PROJECT NO.:

73