

PROJECT TITLE:

Dióxido de Nitrogênio - $\mu\text{g}/\text{m}^3$
Max. 1h - ano 2011

COMMENTS:

Fontes consideradas:
UTE PAMPA SUL
UTE CGTEE com adequações da fase A e B
UTE CGTEE fase C
UTE CGTEE fase D
UTE Seival
UTE MPX SUL
SOURCES:

8

RECEPTORS:

9800

OUTPUT TYPE:

Concentration

MAX:

227 $\mu\text{g}/\text{m}^3$

COMPANY NAME:

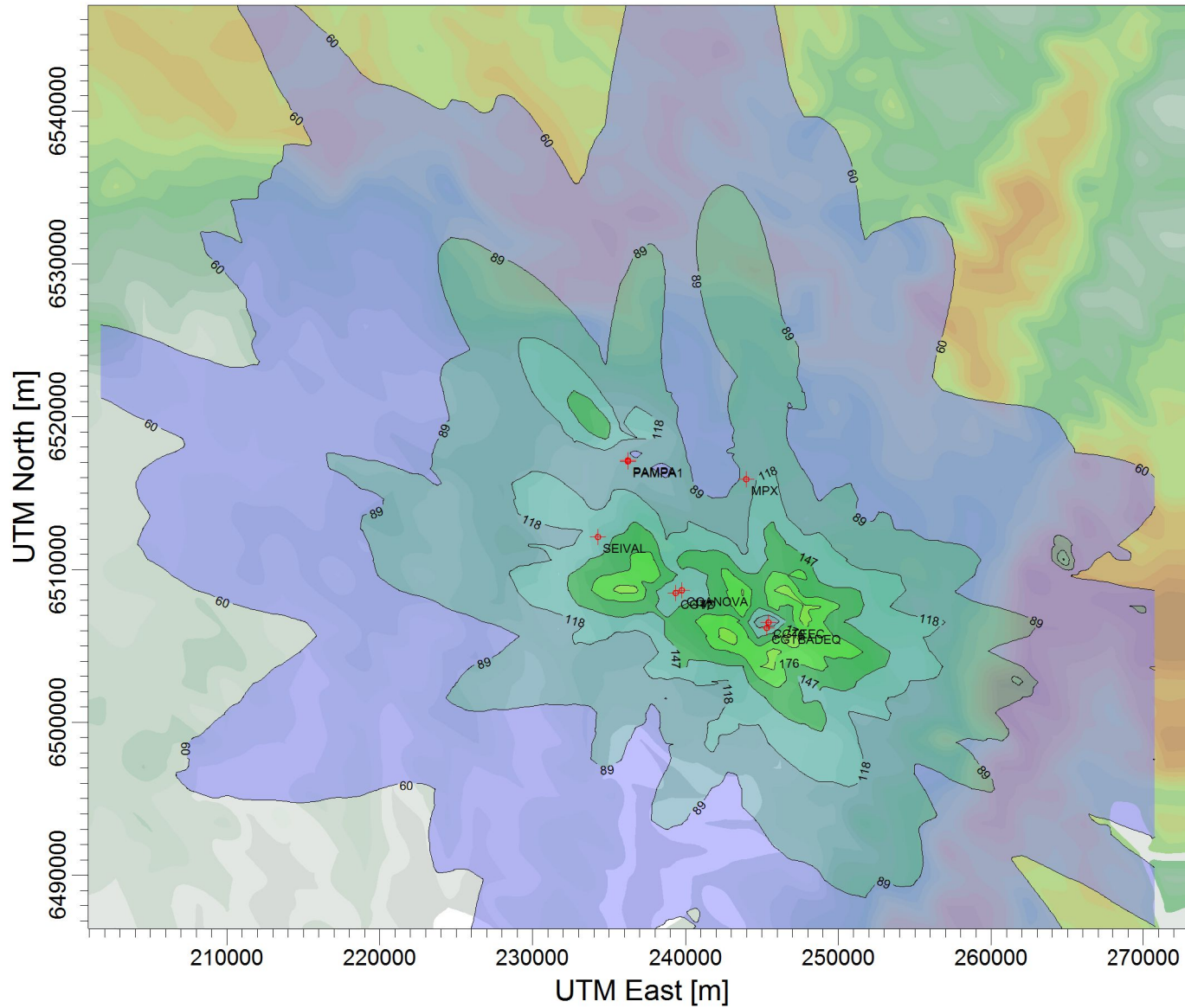
SCALE:

1:428.611

0 10 km

PROJECT NO.:

65



$\mu\text{g}/\text{m}^3$

PLOT FILE OF HIGH 1ST HIGH 1-HR VALUES FOR SOURCE GROUP: TODAS
Max: 227 [$\mu\text{g}/\text{m}^3$] at (246749,00; 6505654,00)

