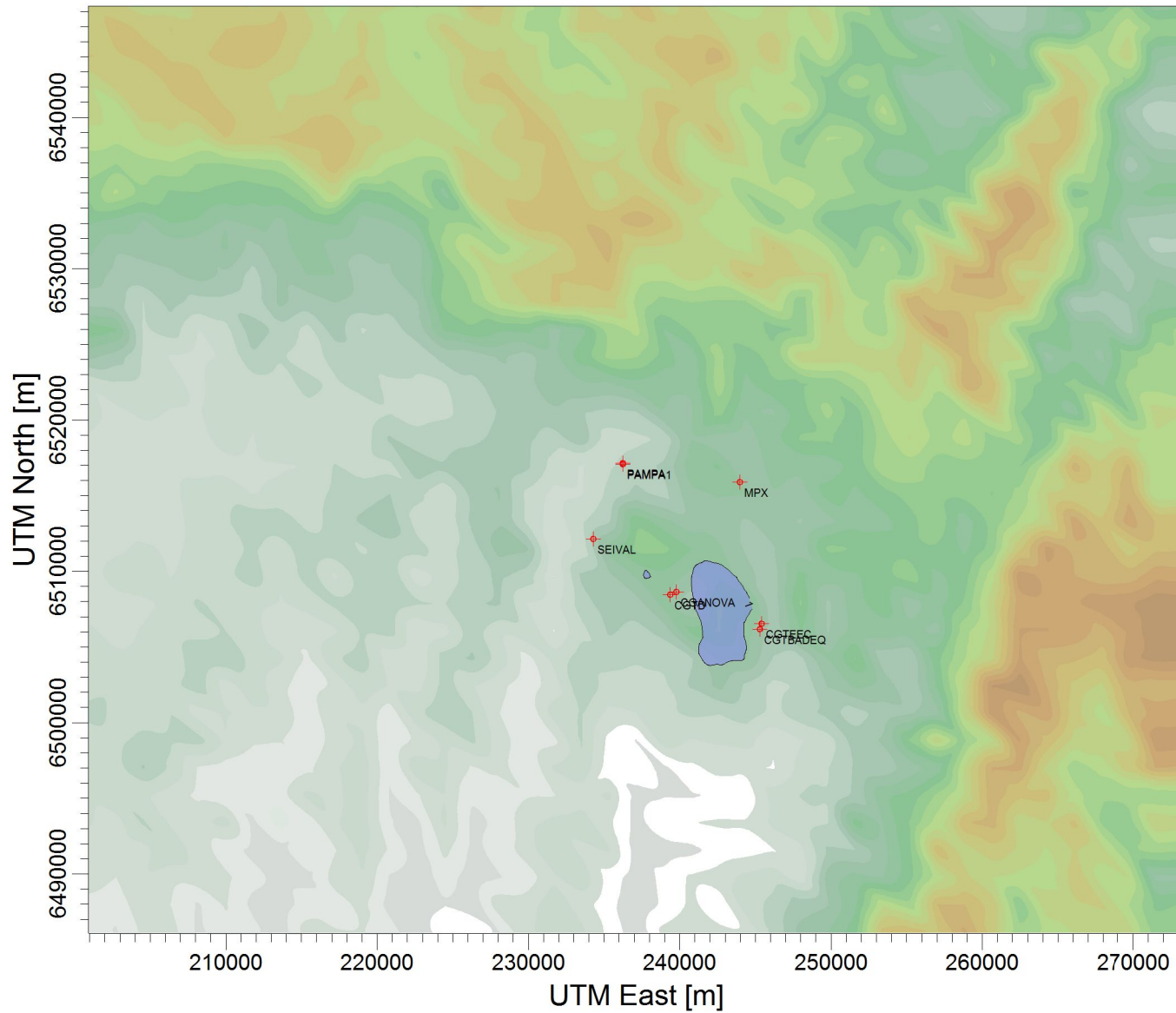


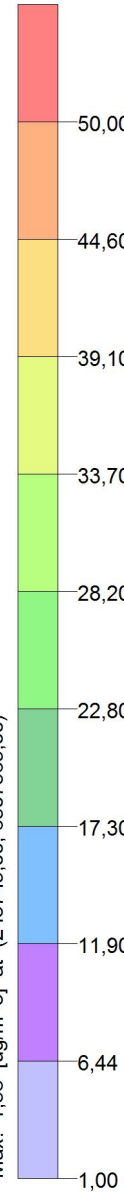
PROJECT TITLE:

**Material Particulado - $\mu\text{g}/\text{m}^3$
Média anual - ano 2011**



$\mu\text{g}/\text{m}^3$

PLOT FILE OF ANNUAL VALUES FOR SOURCE GROUP: TODAS
Max: 1,58 [$\mu\text{g}/\text{m}^3$] at (243749,00, 6507569,00)



COMMENTS:

Fontes consideradas:
UTE PAMPA SUL
UTE CGTEE com adequações da fase A e B
UTE CGTEE fase C
UTE CGTEE fase D
UTE Seival
UTE MPX SUL
SOURCES:

8

RECEPTORS:

9800

OUTPUT TYPE:

Concentration

MAX:

1,58 $\mu\text{g}/\text{m}^3$

COMPANY NAME:

SCALE:

1:434.497



PROJECT NO.:

62