

PROJECT TITLE:

**Material Particulado - $\mu\text{g}/\text{m}^3$
Média mensal - ano 2009**

COMMENTS:

Fontes consideradas:
UTE PAMPA

SOURCES:

8

RECEPTORS:

9800

OUTPUT TYPE:

Concentration

MAX:

0,405 $\mu\text{g}/\text{m}^3$

COMPANY NAME:

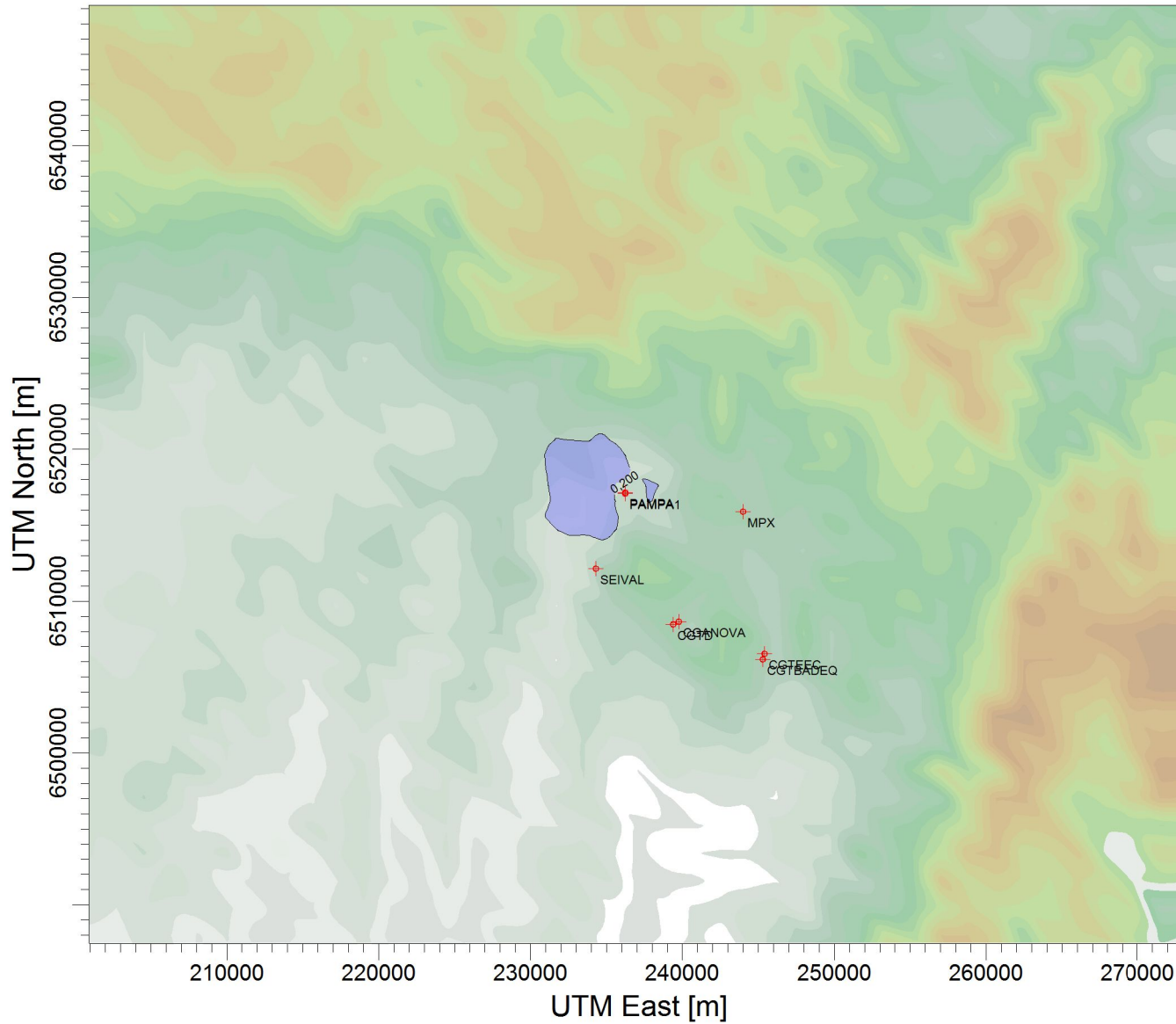
SCALE:

1:438.062

0 10 km

PROJECT NO.:

04



$\mu\text{g}/\text{m}^3$

PLOT FILE OF HIGH 1ST HIGH MONTH VALUES FOR SOURCE GROUP: PAMPA
Max: 0,405 [$\mu\text{g}/\text{m}^3$] at (234749,00, 6517654,00)