

PROJECT TITLE:

Dióxido de Nitrogênio - µg/m³
Máx.1h - ano 2010

COMMENTS:

Fontes consideradas:
UTE CGTEE com adequações da fase A e B
UTE CGTEE fase C
UTE CGTEE fase D
UTE Seival
UTE MPX SUL

SOURCES:

6

RECEPTORS:

9800

OUTPUT TYPE:

Concentration

MAX:

282 µg/m³

COMPANY NAME:

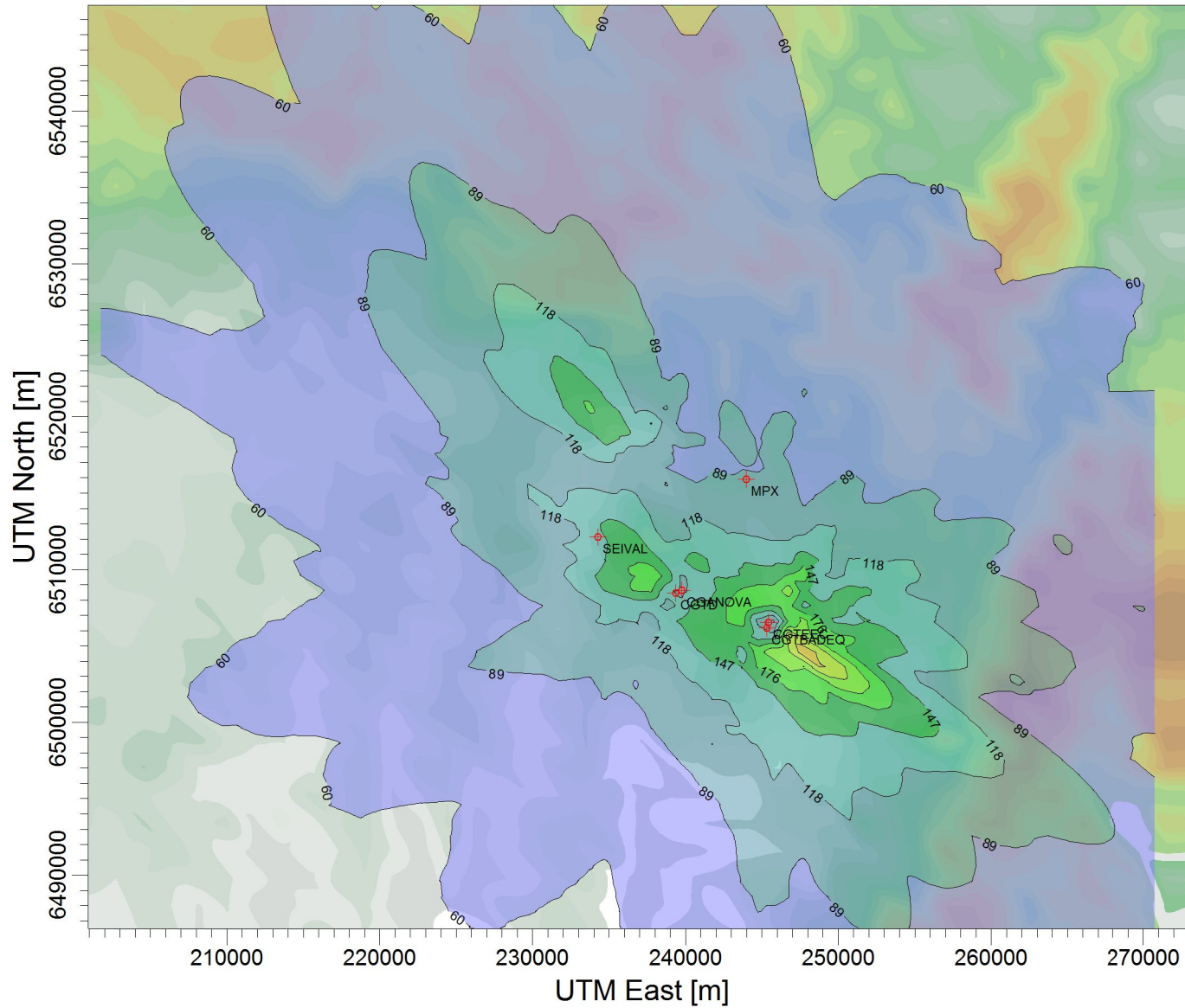
SCALE:

1:428.611



PROJECT NO.:

39



µg/m³

PLOT FILE OF HIGH 1ST HIGH 1-HR VALUES FOR SOURCE GROUP: ALL
Max: 282 [µg/m³] at (247749,00; 6504654,00)

