

PROJECT TITLE:

Dióxido de Nitrogênio - $\mu\text{g}/\text{m}^3$ - NO₂
Máx. 1h - ano 2010

COMMENTS:

Fontes consideradas:
UTE PAMPA SUL
UTE CGTEE com adequações da fase A e B
UTE CGTEE fase C
UTE CGTEE fase D
UTE Seival
UTE MPX SUL
SOURCES:

8

RECEPTORS:

9800

OUTPUT TYPE:

Concentration

MAX:

142 $\mu\text{g}/\text{m}^3$

COMPANY NAME:

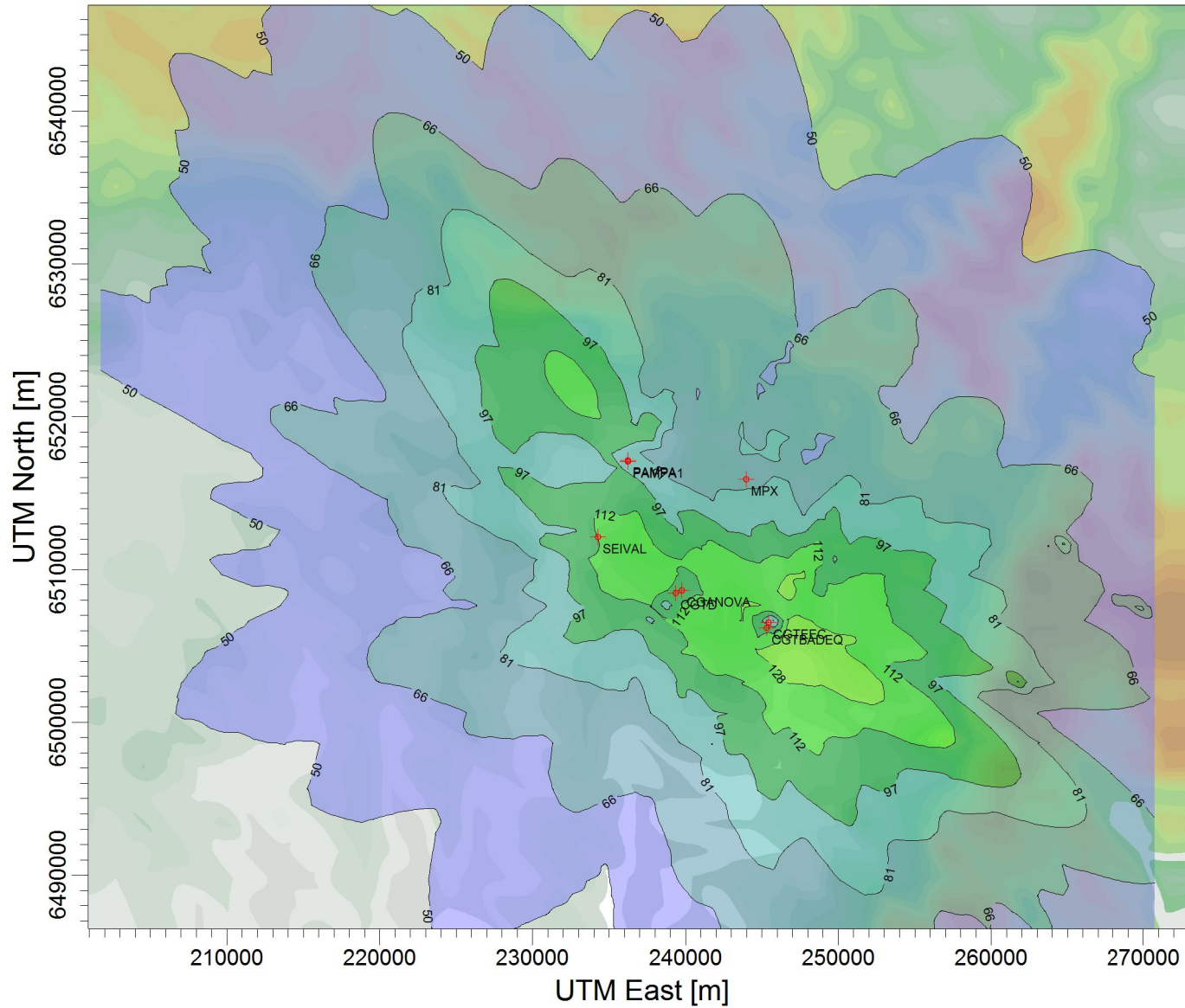
SCALE:

1:428.611

0 10 km

PROJECT NO.:

38.a



$\mu\text{g}/\text{m}^3$

PLOT FILE OF HIGH 1ST HIGH 1-HR VALUES FOR SOURCE GROUP: TODAS
Max: 142 [$\mu\text{g}/\text{m}^3$] at (247749.00; 6504654.00)

