

PROJECT TITLE:

Dióxido de Nitrogênio - $\mu\text{g}/\text{m}^3$ - NO2
Máx. 1h - ano 2010

COMMENTS:

Fontes consideradas:
UTE PAMPA

SOURCES:

8

RECEPTORS:

9800

OUTPUT TYPE:

Concentration

MAX:

81,6 $\mu\text{g}/\text{m}^3$

COMPANY NAME:

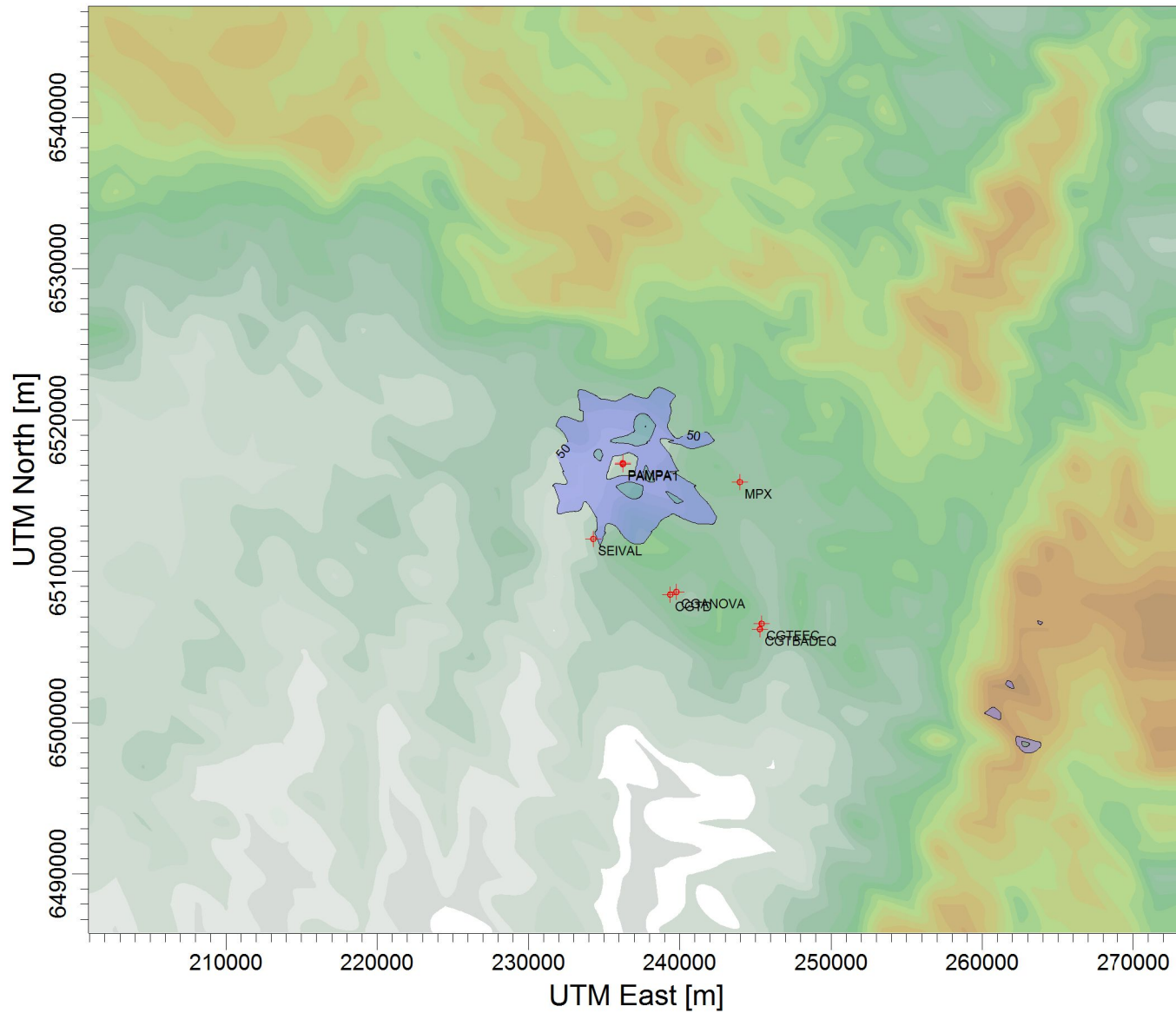
SCALE:

1:434.497

0 10 km

PROJECT NO.:

37.a



$\mu\text{g}/\text{m}^3$

PLOT FILE OF HIGH 1ST HIGH 1-HR VALUES FOR SOURCE GROUP: PAMPA
Max: 81,6 [$\mu\text{g}/\text{m}^3$] at (237749,00, 6519569,00)