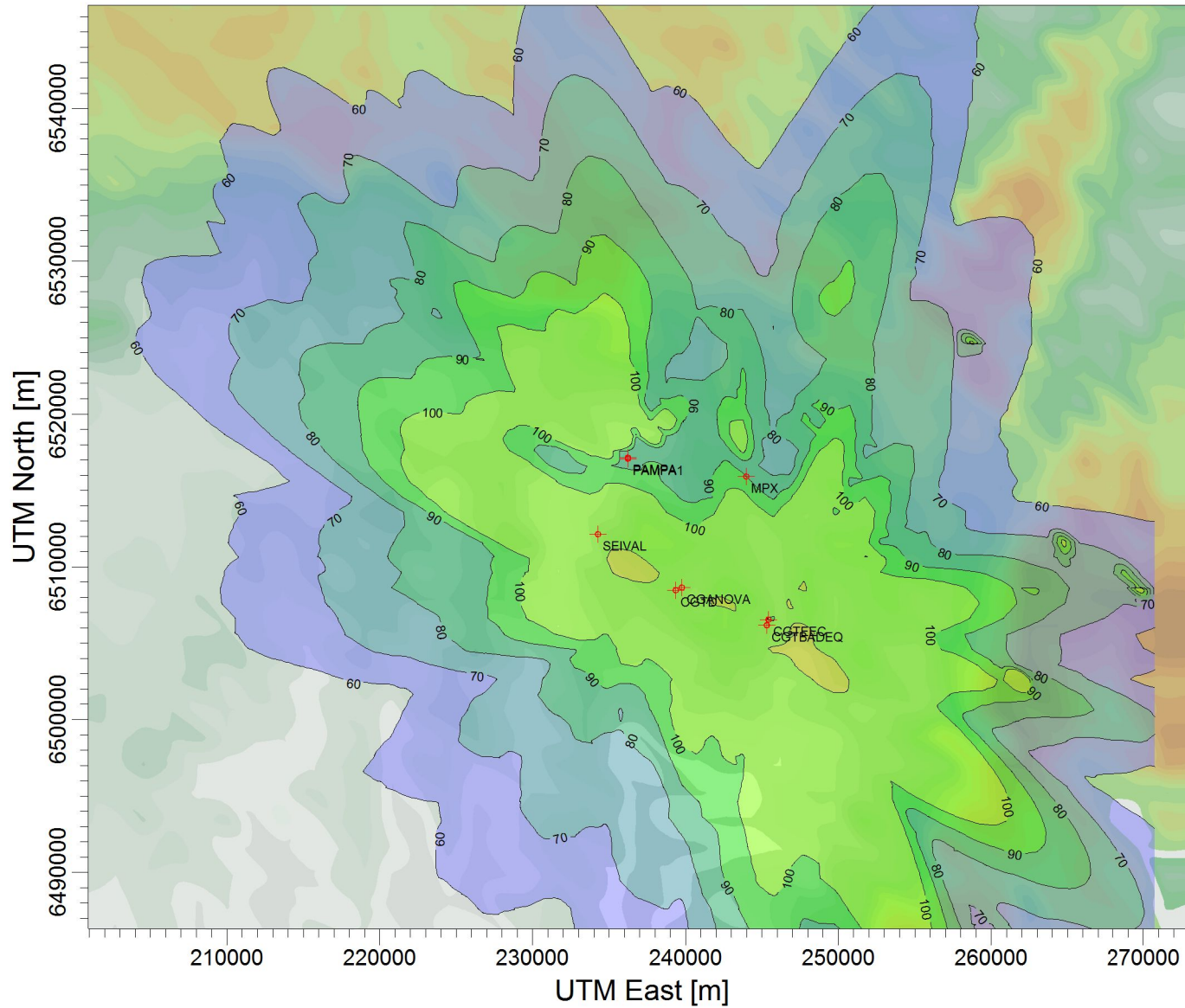


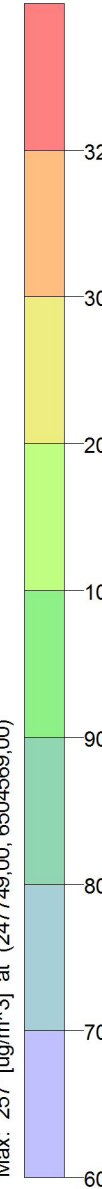
PROJECT TITLE:

**Dióxido de Nitrogênio - $\mu\text{g}/\text{m}^3$
Máx. 1h - ano 2009**



$\mu\text{g}/\text{m}^3$

PLOT FILE OF HIGH 1ST HIGH 1-HR VALUES FOR SOURCE GROUP: TODAS
Max: 257 [$\mu\text{g}/\text{m}^3$] at (247749.00, 6504569.00)



COMMENTS:

Fontes consideradas:
UTE PAMPA
UTE CGTEE com adequações da fase A e B
UTE CGTEE fase C
UTE CGTEE fase D
UTE Seival
UTE MPX SUL
SOURCES:

8

RECEPTORS:

9800

OUTPUT TYPE:

Concentration

MAX:

257 $\mu\text{g}/\text{m}^3$

COMPANY NAME:

SCALE:

1:428.611



PROJECT NO.:

11