

PROJECT TITLE:

**Dióxido de Nitrogênio -  $\mu\text{g}/\text{m}^3$**   
**Máx. 1h - ano 2013**

COMMENTS:

Fontes consideradas:  
UTE PAMPA SUL  
UTE CGTEE com adequações da fase A e B  
UTE CGTEE fase C  
UTE CGTEE fase D  
UTE Seival  
UTE MPX SUL  
SOURCES:

**8**

RECEPTORS:

**9800**

OUTPUT TYPE:

**Concentration**

MAX:

**263  $\mu\text{g}/\text{m}^3$**

COMPANY NAME:

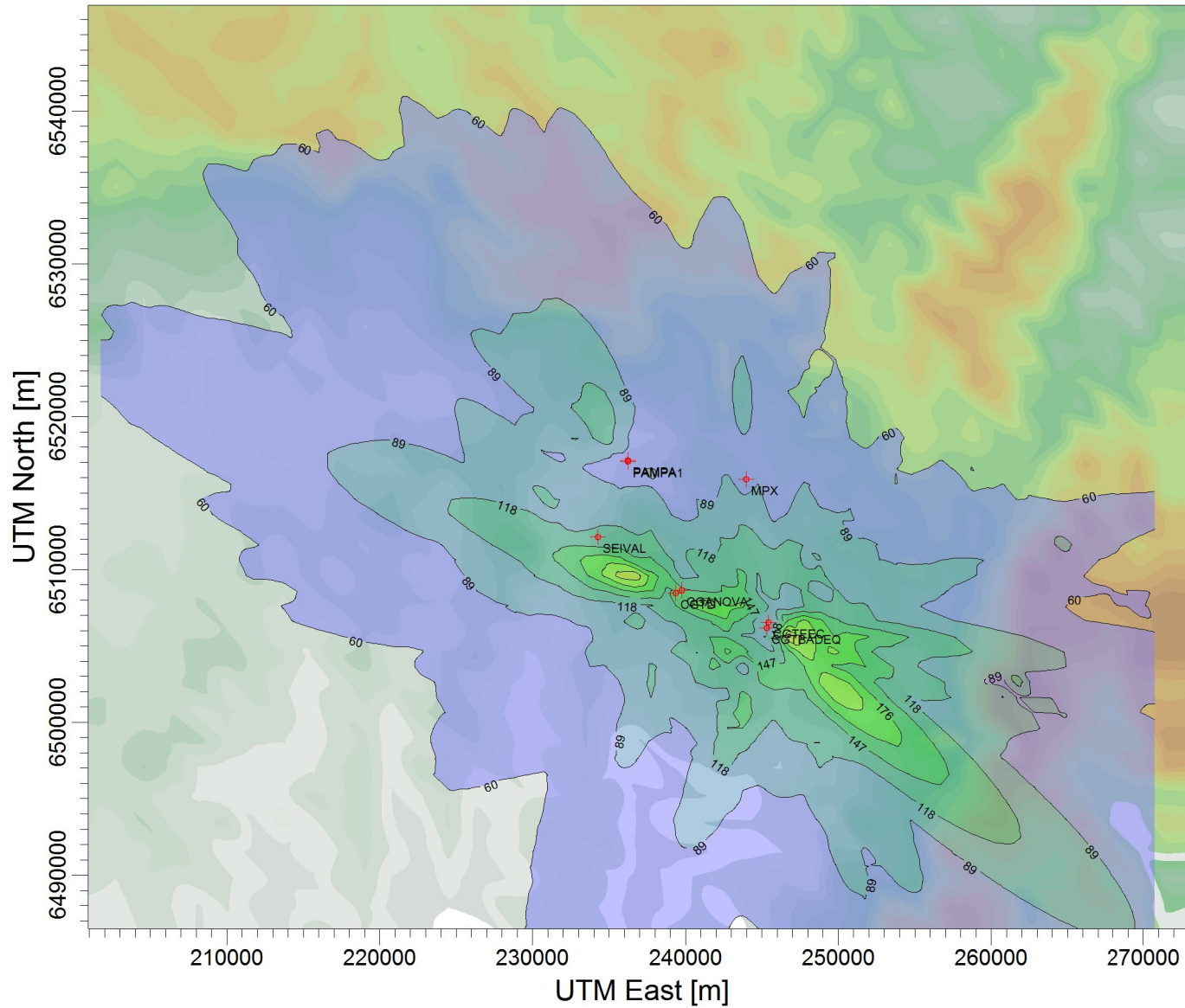
SCALE:

1:428.611

0 10 km

PROJECT NO.:

**119**



$\mu\text{g}/\text{m}^3$

PLOT FILE OF HIGH 1ST HIGH 1-HR VALUES FOR SOURCE GROUP: TODAS  
Max: 263 [ $\mu\text{g}/\text{m}^3$ ] at (246749,00; 6505654,00)

