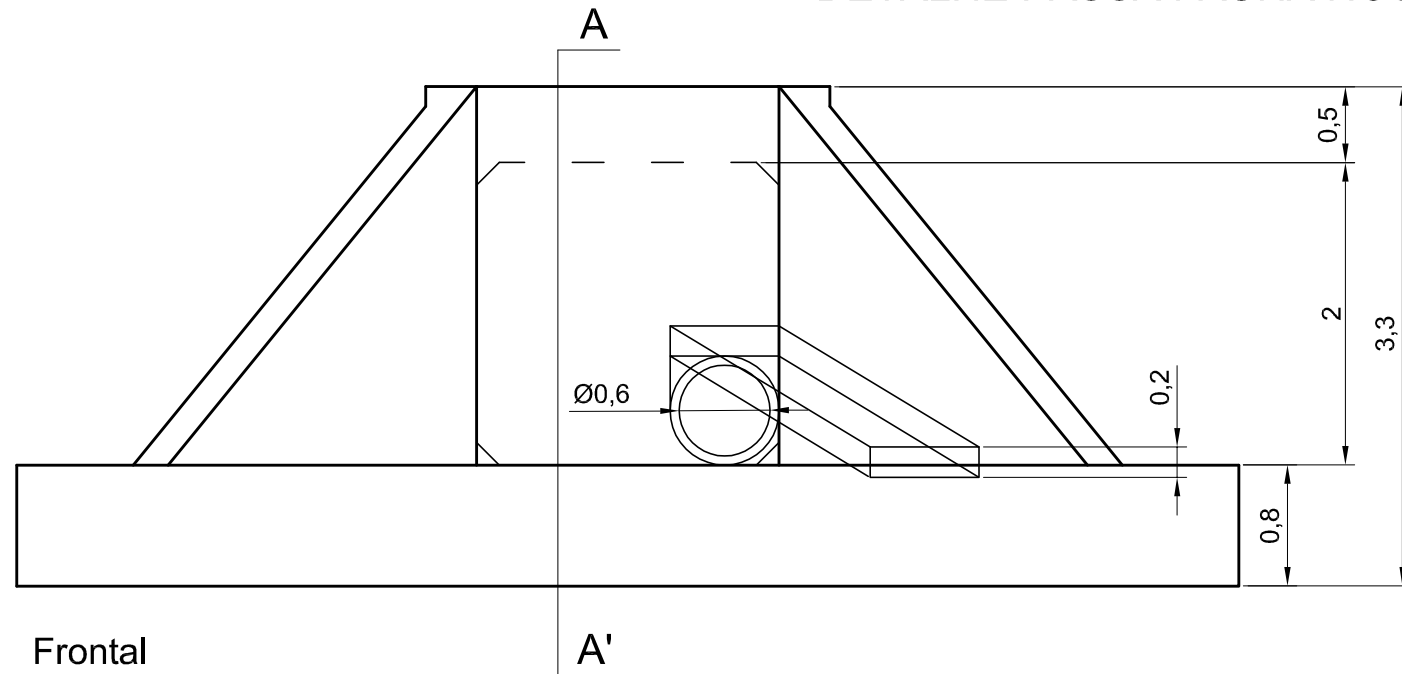
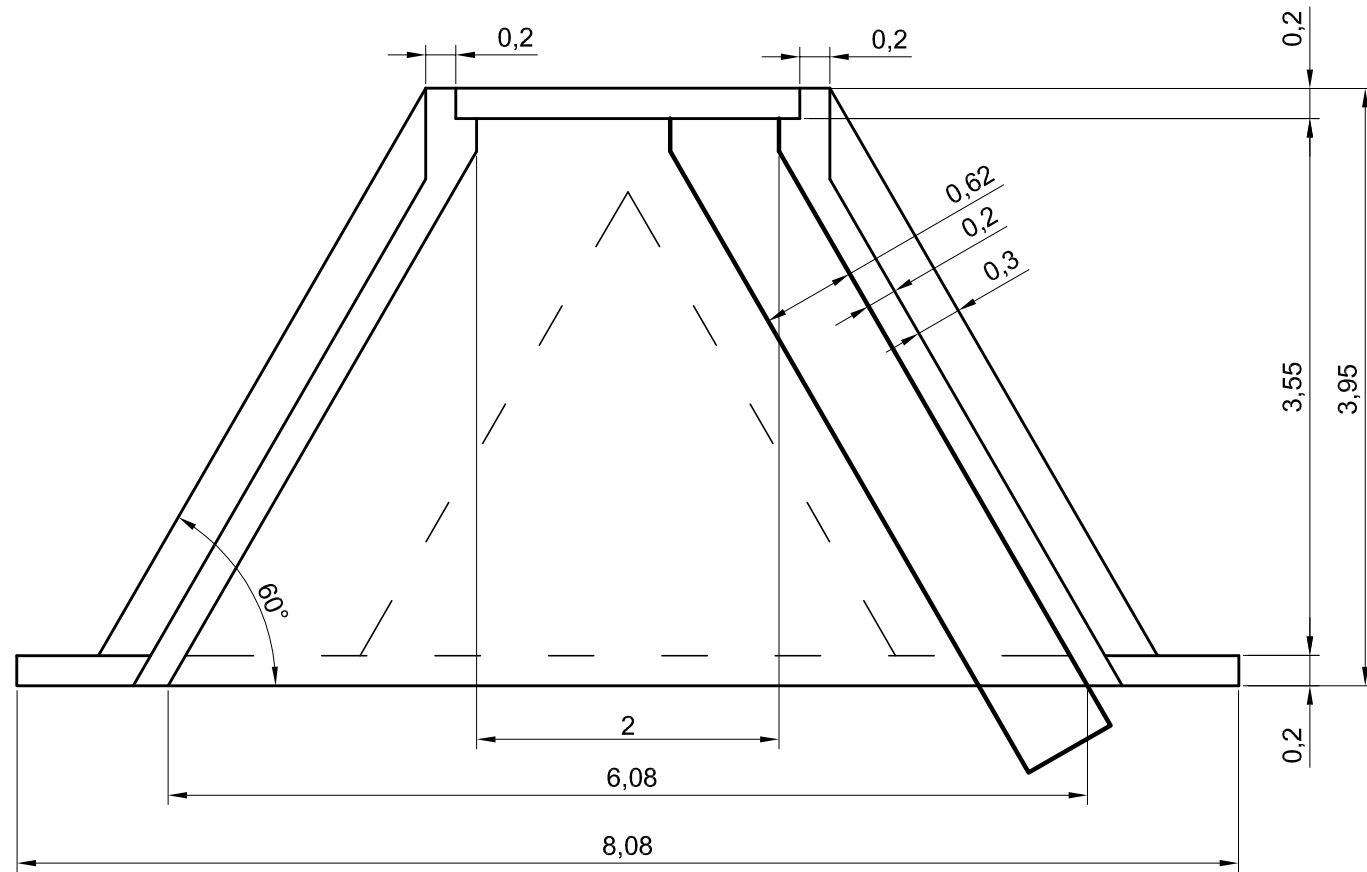


DETALHE PASSA FAUNA NOS BUEIROS



Frontal

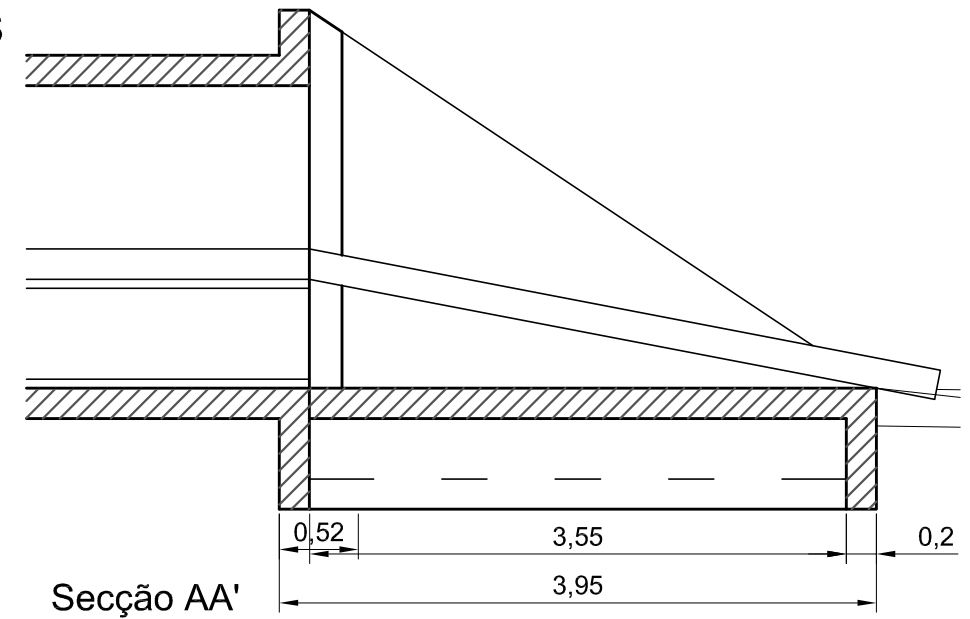
A'



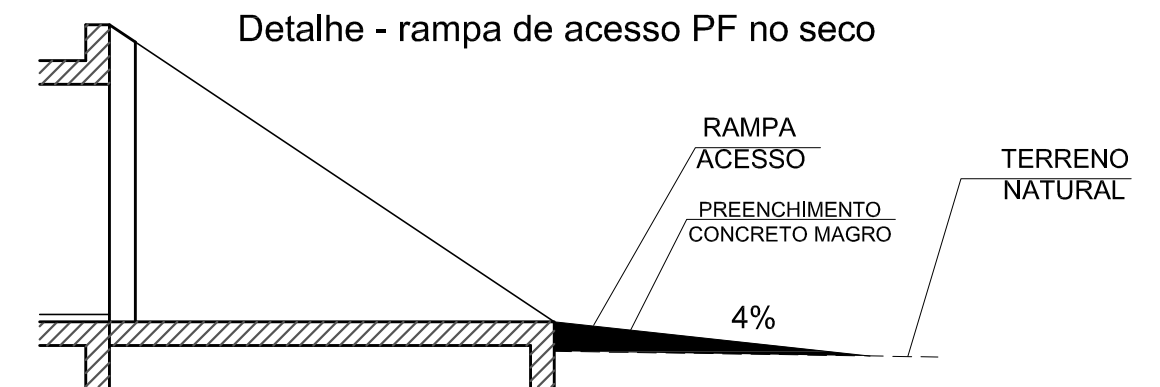
Topo

LOCALIZAÇÃO PASSAGEM FAUNA – OAC

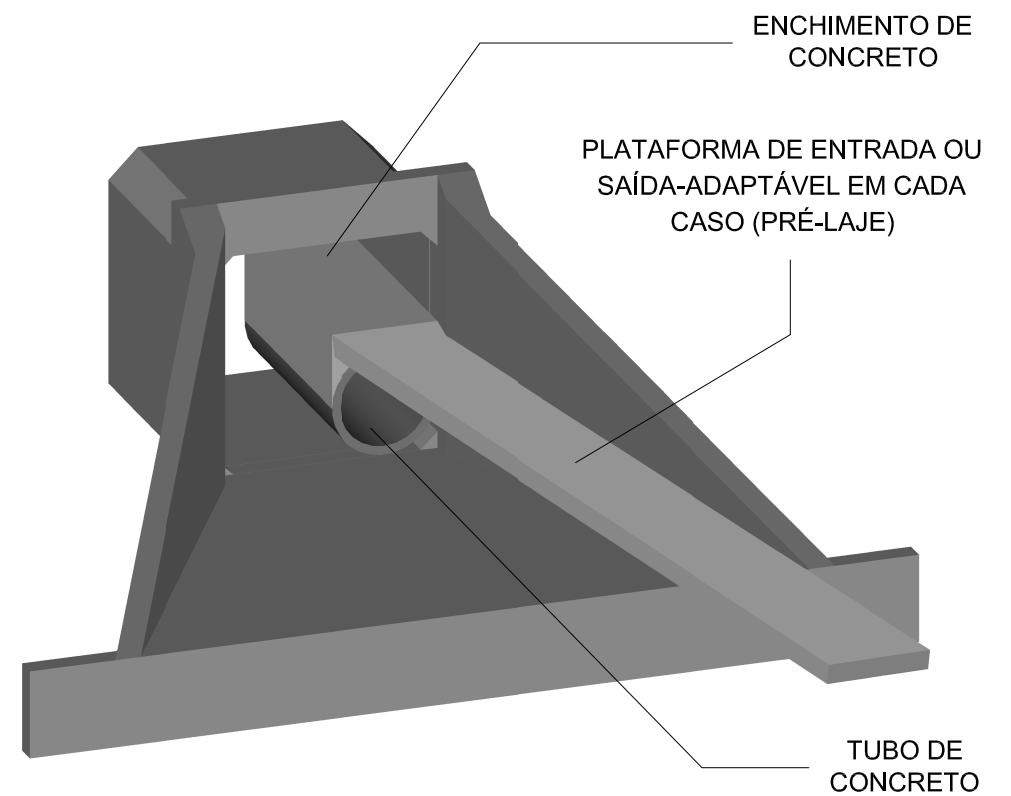
km PNV	km Projeto	TIPO OAC
418+119	20+954,3	BTCC 3,0x3,0
418+283	21+118,1	BTCC 3,0x3,0
440+265	43+111,6	BDCC 2,5x2,5



Secção AA'



Detalhe - rampa de acesso PF no seco



PROJETADO POR:	MT	DEPARTAMENTO NACIONAL DE INFRA-ESTRUTURA DE TRANSPORTES	DPP
	RODOVIA : BR-116/RS	TRECHO : Divisa SC/RS (Rio Pelotas) - Jaguarão (Fronteira BR/UR)	Reg.:
	SUBTRECHO : Acesso a Camaquã (Ac. Norte) - Entr. BR/265 (p/ São Lourenço do Sul)	SEGMENTO : km 397,20 - km 447,98 (km 0+000 - km 50+825,67)	Nº :
	ESCALA :	PROJETO DE PAISAGISMO	FOLHA / TOTAL
	DATA : MAIO/2012	DETALHE PASSAGEM DE FAUNA - BUEIROS	PA-01