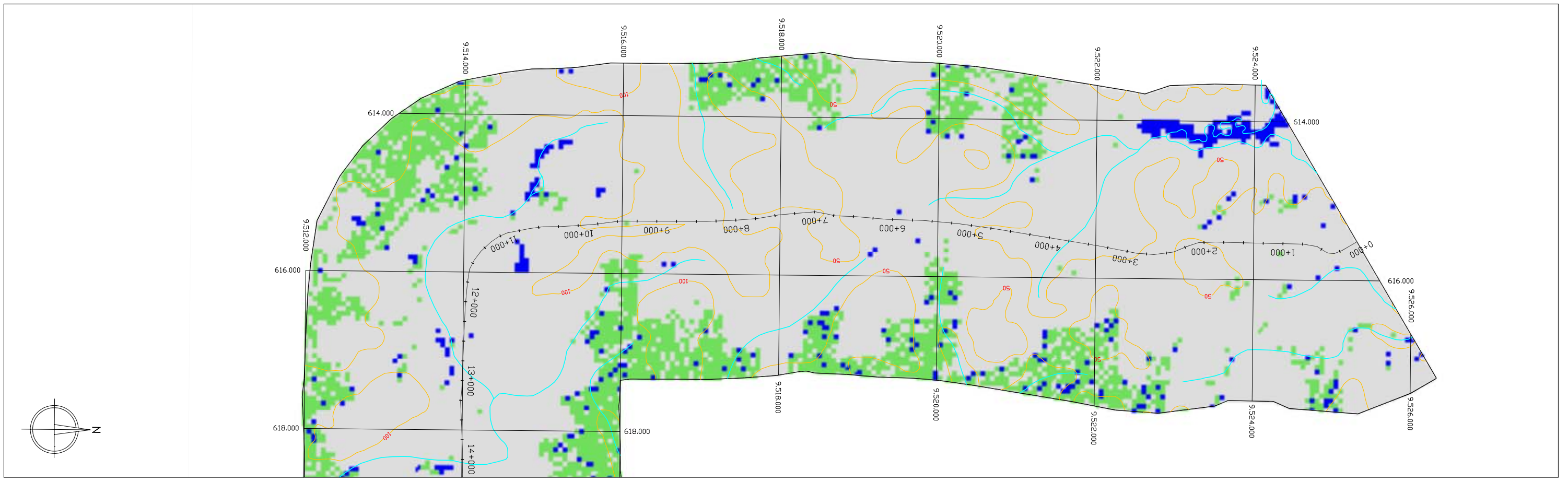
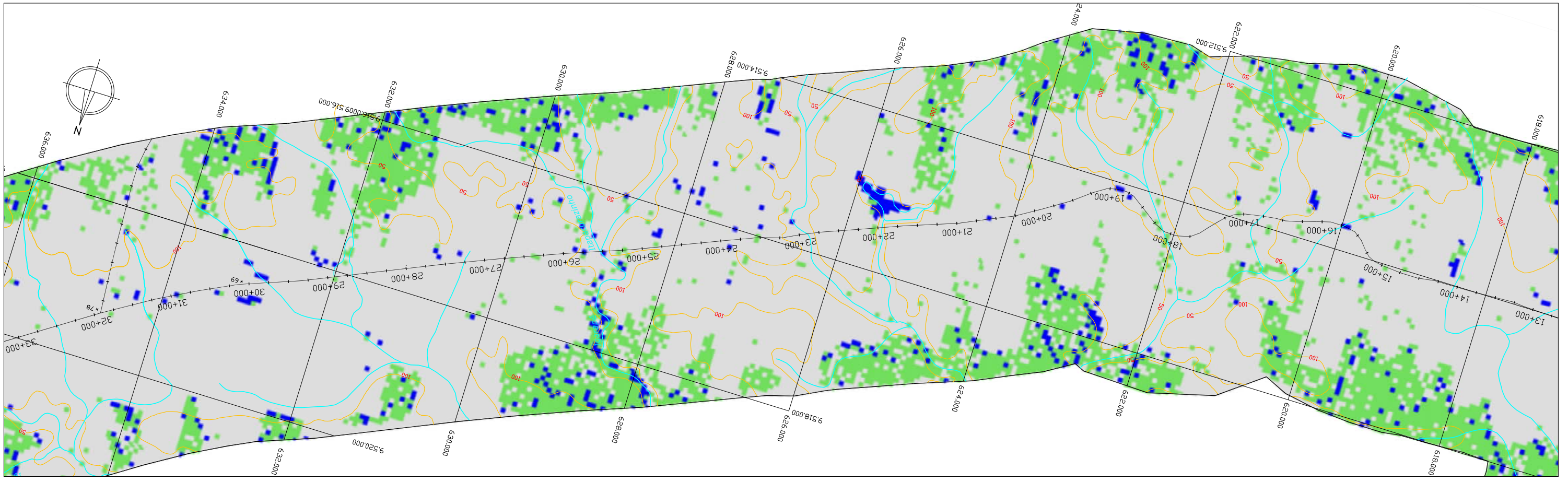




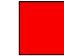

USO DO SOLO

Trecho: Miritituba - Rurópolis

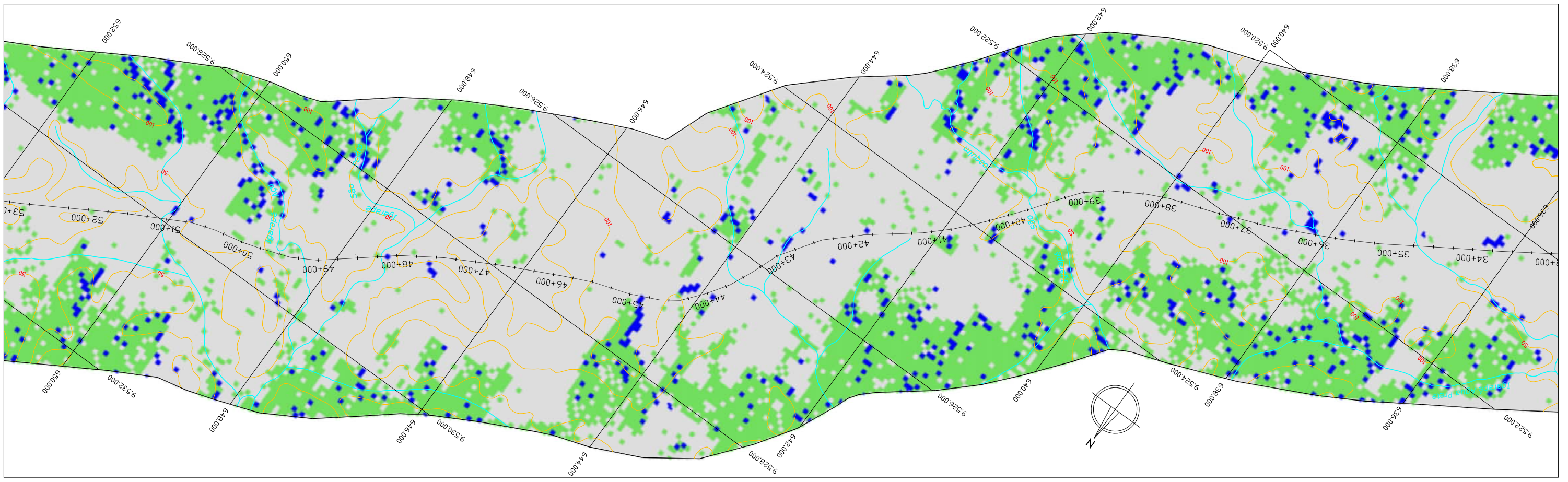
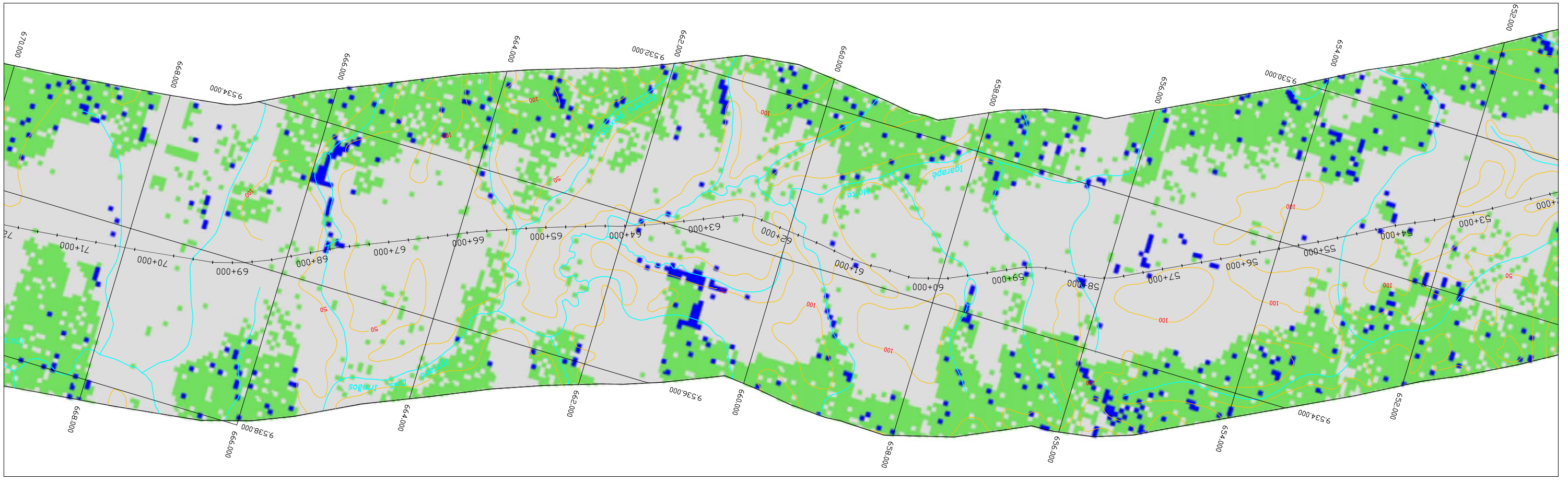
- Lavoura/Pastagem/Desflorestamento
- Recursos Hidricos
- Queimada
- Mata Nativa
- Area Urbana







LEGENDA

-  Recursos Hidricos
-  Mata Nativa
-  Queimada
-  Lavoura/Pastagem/Desflorestamento

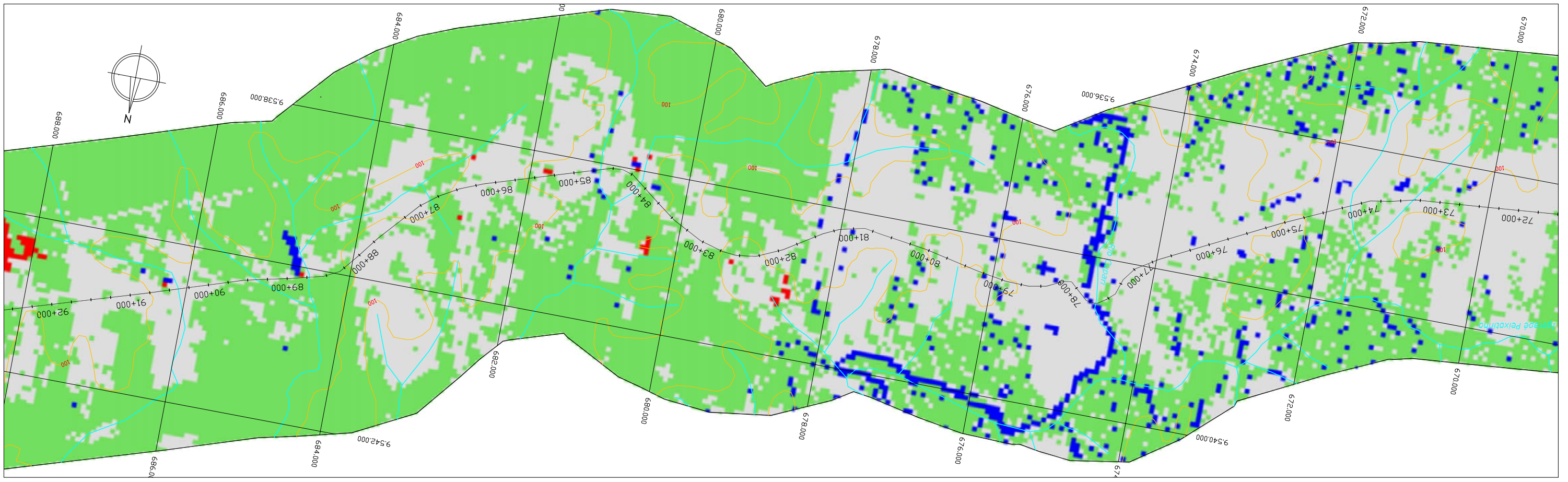
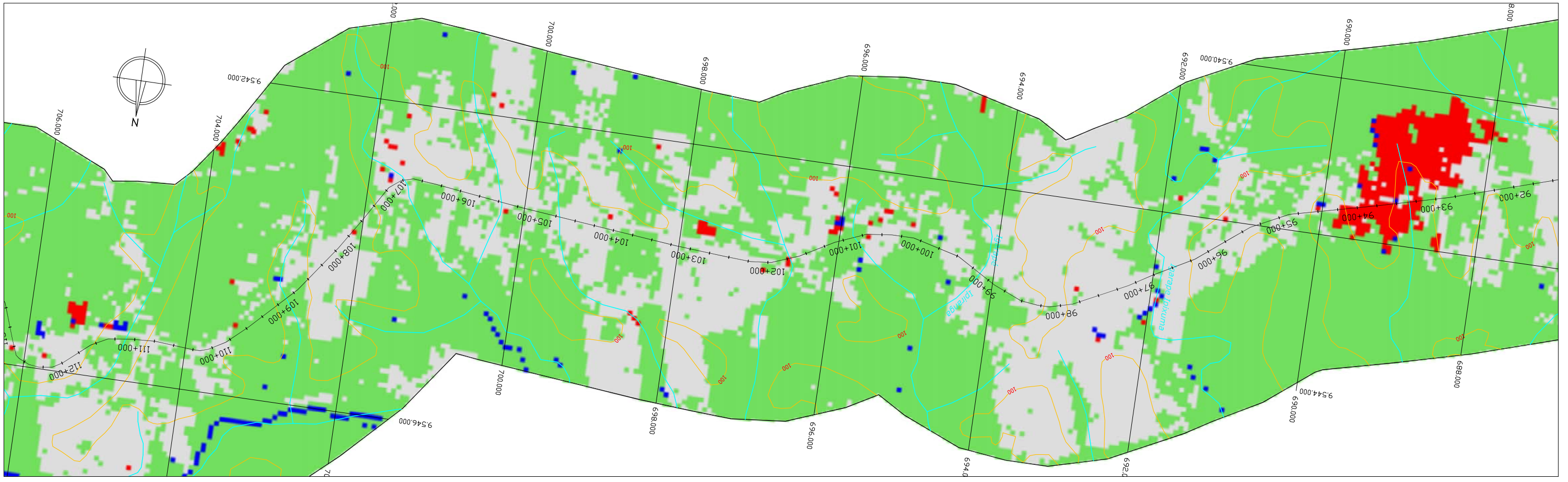
 Area Urbana







LEGENDA

-  Recursos Hidricos
-  Mata Nativa
-  Queimada
-  Lavoura/Pastagem/Desflorestamento

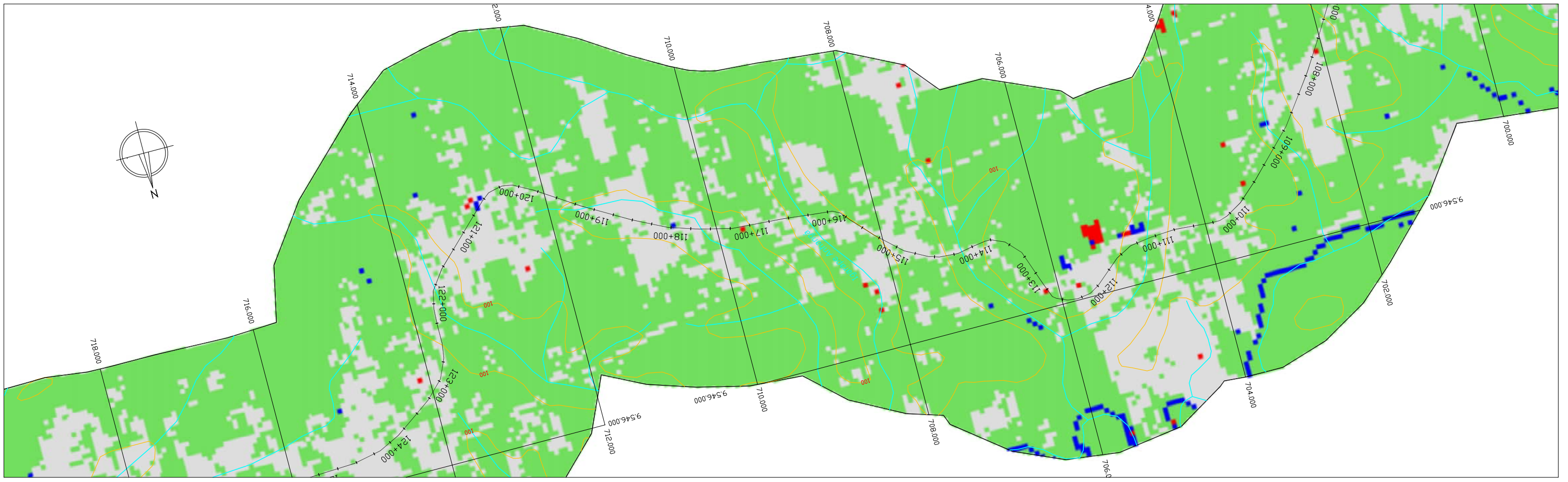
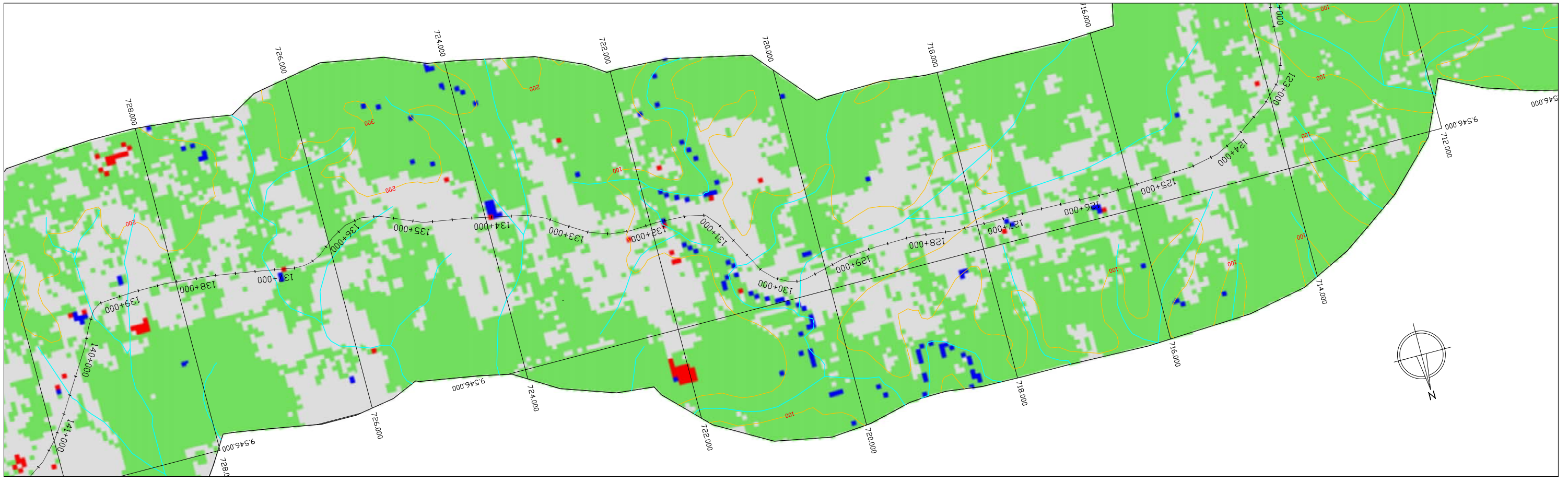
 Area Urbana



Area Urbana

-  Queimada
-  Mata Nativa
-  Lavoura/Pastagem/Desflorestamento
-  Recursos Hidricos

LEGENDA



LEGENDA

Recursos Hidricos



Lavoura/Pastagem/Desflorestamento



Mata Nativa





Queimada



Area Urbana



 DNT Departamento Nacional de Infra-Estrutura de Transportes Ministério dos Transportes		 ecoplan ENGENHARIA	
Escala 1:50.000		Data DUT/2002	
Rodovia: BR 230 Trecho: Miritituba - Rurópolis		USO DO SOLO km 141,0 ao km 143,83	