

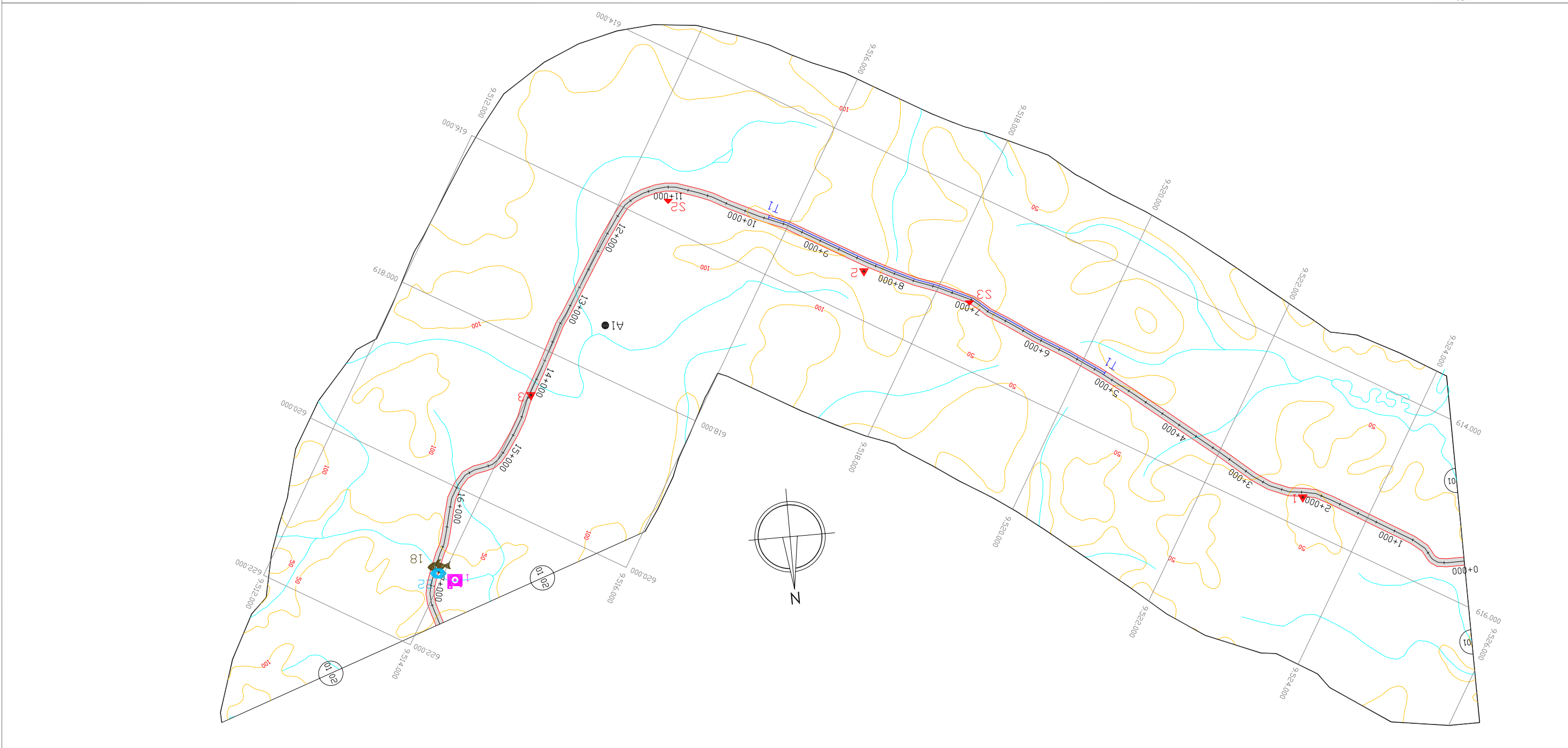
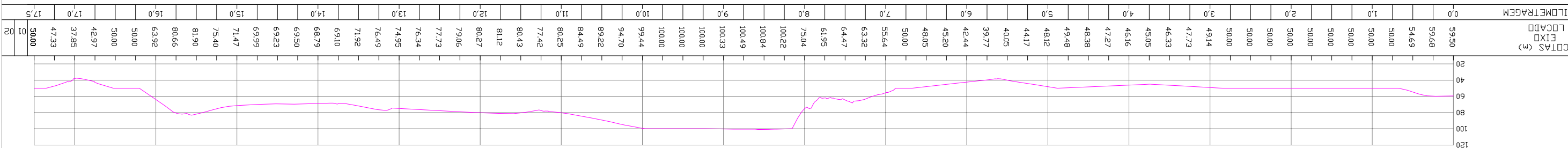
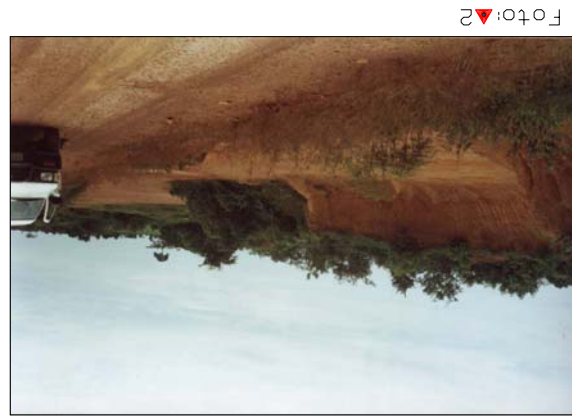
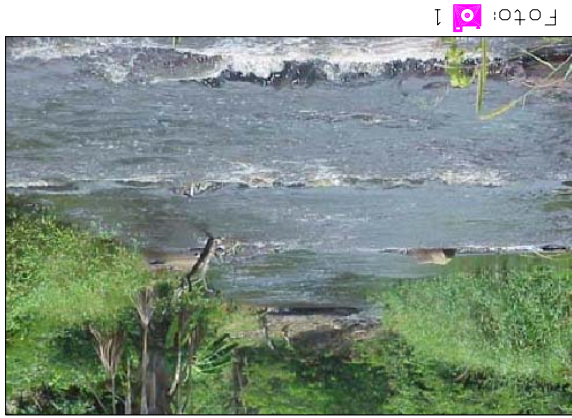
TOPOGRAFIA
ANTEPROJETO GEOMÉTRICO
Trecho: Miritituba - Rurópolis

DNIT
Departamento Nacional de
Infra-Estrutura de Transportes
Ministério dos Transportes

ecoplan
ENGENHARIA

Data: DUT/2002
Escala: H = 1:50.000
V = 1:50.000
Rodovia: BR 230
Trecho: Miratubã - Rurópolis

ANTEPROJETO GEOMÉTRICO
km 0,0 ao km 17,5



DNIT
Departamento Nacional de Infra-Estrutura de Transportes
Ministério dos Transportes

ecoplan
ENGENHARIA

Data: DUT/2002
Escalas: H = 1:50.000
V = 1:50.000
Trecho: Miratituba - Rurópolis
Rodovia: BR 230

ANTEPROJETO GEOMÉTRICO
km 105,0 ao km 122,5

