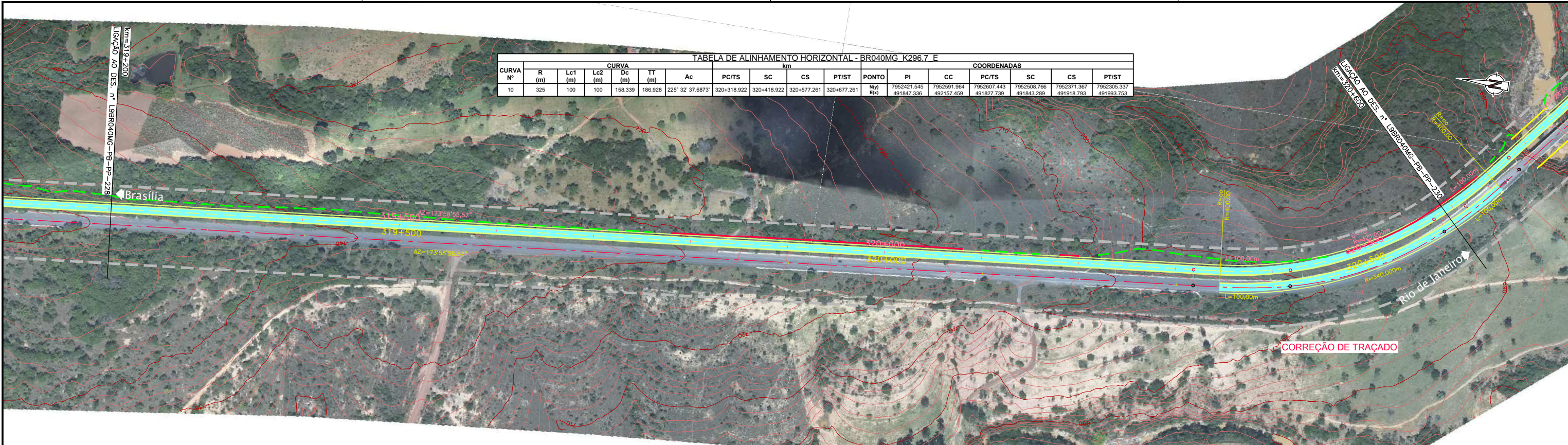


Em cópias deste desenho com formato diferente do A1 atender à escala gráfica
 N:\1044-08-BR040-LOTES_AP_P102_0701_TRECHO1_L99R040MG-PB-PP-228_C001_C002_C003_C004_C005_C006_C007_C008_C009_C010_C011_C012_C013_C014_C015_C016_C017_C018_C019_C020_C021_C022_C023_C024_C025_C026_C027_C028_C029_C030_C031_C032_C033_C034_C035_C036_C037_C038_C039_C040_C041_C042_C043_C044_C045_C046_C047_C048_C049_C050_C051_C052_C053_C054_C055_C056_C057_C058_C059_C060_C061_C062_C063_C064_C065_C066_C067_C068_C069_C070_C071_C072_C073_C074_C075_C076_C077_C078_C079_C080_C081_C082_C083_C084_C085_C086_C087_C088_C089_C090_C091_C092_C093_C094_C095_C096_C097_C098_C099_C100_C101_C102_C103_C104_C105_C106_C107_C108_C109_C110_C111_C112_C113_C114_C115_C116_C117_C118_C119_C120_C121_C122_C123_C124_C125_C126_C127_C128_C129_C130_C131_C132_C133_C134_C135_C136_C137_C138_C139_C140_C141_C142_C143_C144_C145_C146_C147_C148_C149_C150_C151_C152_C153_C154_C155_C156_C157_C158_C159_C160_C161_C162_C163_C164_C165_C166_C167_C168_C169_C170_C171_C172_C173_C174_C175_C176_C177_C178_C179_C180_C181_C182_C183_C184_C185_C186_C187_C188_C189_C190_C191_C192_C193_C194_C195_C196_C197_C198_C199_C200_C201_C202_C203_C204_C205_C206_C207_C208_C209_C210_C211_C212_C213_C214_C215_C216_C217_C218_C219_C220_C221_C222_C223_C224_C225_C226_C227_C228_C229_C230_C231_C232_C233_C234_C235_C236_C237_C238_C239_C240_C241_C242_C243_C244_C245_C246_C247_C248_C249_C250_C251_C252_C253_C254_C255_C256_C257_C258_C259_C260_C261_C262_C263_C264_C265_C266_C267_C268_C269_C270_C271_C272_C273_C274_C275_C276_C277_C278_C279_C280_C281_C282_C283_C284_C285_C286_C287_C288_C289_C290_C291_C292_C293_C294_C295_C296_C297_C298_C299_C300_C301_C302_C303_C304_C305_C306_C307_C308_C309_C310_C311_C312_C313_C314_C315_C316_C317_C318_C319_C320_C321_C322_C323_C324_C325_C326_C327_C328_C329_C330_C331_C332_C333_C334_C335_C336_C337_C338_C339_C340_C341_C342_C343_C344_C345_C346_C347_C348_C349_C350_C351_C352_C353_C354_C355_C356_C357_C358_C359_C360_C361_C362_C363_C364_C365_C366_C367_C368_C369_C370_C371_C372_C373_C374_C375_C376_C377_C378_C379_C380_C381_C382_C383_C384_C385_C386_C387_C388_C389_C390_C391_C392_C393_C394_C395_C396_C397_C398_C399_C400_C401_C402_C403_C404_C405_C406_C407_C408_C409_C410_C411_C412_C413_C414_C415_C416_C417_C418_C419_C420_C421_C422_C423_C424_C425_C426_C427_C428_C429_C430_C431_C432_C433_C434_C435_C436_C437_C438_C439_C440_C441_C442_C443_C444_C445_C446_C447_C448_C449_C450_C451_C452_C453_C454_C455_C456_C457_C458_C459_C460_C461_C462_C463_C464_C465_C466_C467_C468_C469_C470_C471_C472_C473_C474_C475_C476_C477_C478_C479_C480_C481_C482_C483_C484_C485_C486_C487_C488_C489_C490_C491_C492_C493_C494_C495_C496_C497_C498_C499_C500_C501_C502_C503_C504_C505_C506_C507_C508_C509_C510_C511_C512_C513_C514_C515_C516_C517_C518_C519_C520_C521_C522_C523_C524_C525_C526_C527_C528_C529_C530_C531_C532_C533_C534_C535_C536_C537_C538_C539_C540_C541_C542_C543_C544_C545_C546_C547_C548_C549_C550_C551_C552_C553_C554_C555_C556_C557_C558_C559_C560_C561_C562_C563_C564_C565_C566_C567_C568_C569_C570_C571_C572_C573_C574_C575_C576_C577_C578_C579_C580_C581_C582_C583_C584_C585_C586_C587_C588_C589_C590_C591_C592_C593_C594_C595_C596_C597_C598_C599_C600_C601_C602_C603_C604_C605_C606_C607_C608_C609_C610_C611_C612_C613_C614_C615_C616_C617_C618_C619_C620_C621_C622_C623_C624_C625_C626_C627_C628_C629_C630_C631_C632_C633_C634_C635_C636_C637_C638_C639_C640_C641_C642_C643_C644_C645_C646_C647_C648_C649_C650_C651_C652_C653_C654_C655_C656_C657_C658_C659_C660_C661_C662_C663_C664_C665_C666_C667_C668_C669_C670_C671_C672_C673_C674_C675_C676_C677_C678_C679_C680_C681_C682_C683_C684_C685_C686_C687_C688_C689_C690_C691_C692_C693_C694_C695_C696_C697_C698_C699_C700_C701_C702_C703_C704_C705_C706_C707_C708_C709_C710_C711_C712_C713_C714_C715_C716_C717_C718_C719_C720_C721_C722_C723_C724_C725_C726_C727_C728_C729_C730_C731_C732_C733_C734_C735_C736_C737_C738_C739_C740_C741_C742_C743_C744_C745_C746_C747_C748_C749_C750_C751_C752_C753_C754_C755_C756_C757_C758_C759_C760_C761_C762_C763_C764_C765_C766_C767_C768_C769_C770_C771_C772_C773_C774_C775_C776_C777_C778_C779_C780_C781_C782_C783_C784_C785_C786_C787_C788_C789_C790_C791_C792_C793_C794_C795_C796_C797_C798_C799_C800_C801_C802_C803_C804_C805_C806_C807_C808_C809_C810_C811_C812_C813_C814_C815_C816_C817_C818_C819_C820_C821_C822_C823_C824_C825_C826_C827_C828_C829_C830_C831_C832_C833_C834_C835_C836_C837_C838_C839_C840_C841_C842_C843_C844_C845_C846_C847_C848_C849_C850_C851_C852_C853_C854_C855_C856_C857_C858_C859_C860_C861_C862_C863_C864_C865_C866_C867_C868_C869_C870_C871_C872_C873_C874_C875_C876_C877_C878_C879_C880_C881_C882_C883_C884_C885_C886_C887_C888_C889_C890_C891_C892_C893_C894_C895_C896_C897_C898_C899_C900_C901_C902_C903_C904_C905_C906_C907_C908_C909_C910_C911_C912_C913_C914_C915_C916_C917_C918_C919_C920_C921_C922_C923_C924_C925_C926_C927_C928_C929_C930_C931_C932_C933_C934_C935_C936_C937_C938_C939_C940_C941_C942_C943_C944_C945_C946_C947_C948_C949_C950_C951_C952_C953_C954_C955_C956_C957_C958_C959_C960_C961_C962_C963_C964_C965_C966_C967_C968_C969_C970_C971_C972_C973_C974_C975_C976_C977_C978_C979_C980_C981_C982_C983_C984_C985_C986_C987_C988_C989_C990_C991_C992_C993_C994_C995_C996_C997_C998_C999_C1000

TABELA DE ALINHAMENTO HORIZONTAL - BR040MG K296.7 E												COORDENADAS					
CURVA Nº	R (m)	CURVA				Ac	PC/TS	SC	CS	PT/ST	PONTO	PI	CC	COORDENADAS			
		Lc1 (m)	Lc2 (m)	Dc (m)	TT (m)									PC/TS	SC	CS	PT/ST
10	325	100	100	158.339	186.928	225° 32' 37.6873"	320+318.922	320+418.922	320+577.261	320+677.261	Nº/1 E/4	7952421.545 491847.336	7952991.964 492157.459	7952607.443 491827.739	7952508.766 491843.289	7952371.367 491919.793	7952305.337 491993.753



ESTAQUEAMENTO	15960	15965	15970	15975	15980	15985	15990	15995	16000	16005	16010	16015	16020	16025	16030
COTAS TERRENO ESQUERDA/DIREITA	746.97	743.301	739.584	737.094	735.109	732.182	729.848	726.539	722.513	716.022	712.075	702.678	700.235	696.891	692.137
COTAS PROJETO ESQUERDA/DIREITA	748.987	744.642	741.508	738.511	735.515	732.519	729.507	725.853	721.249	716.022	711.369	706.459	701.529	696.563	691.554
QUILOMETRAGEM	319+200	319+300	319+400	319+500	319+600	319+700	319+800	319+900	320+000	320+100	320+200	320+300	320+400	320+500	320+600



CONCESSIONÁRIA
BR040

Projeto: **BR-040 DF / GO / MG**
TRECHO BRASÍLIA / DF - JUIZ DE FORA / MG

Projeto:	Paulo Gomes/João Campos	Escala:	
Colaborou:	Luis Lima/Carlos Martins	Designação:	
Desenhou:	Natacha Rodrigues	Número:	
Resp. Téc.:	Luis Seraphim	Rev.:	0
	CREA-SO-0601479273	Nm. Folha:	07
		Data:	2014

Projeto - CONTRATO CLÁUSULA 6.10
TRAÇADO
PROJETO GEOMÉTRICO
km 319+200 ao km 320+600