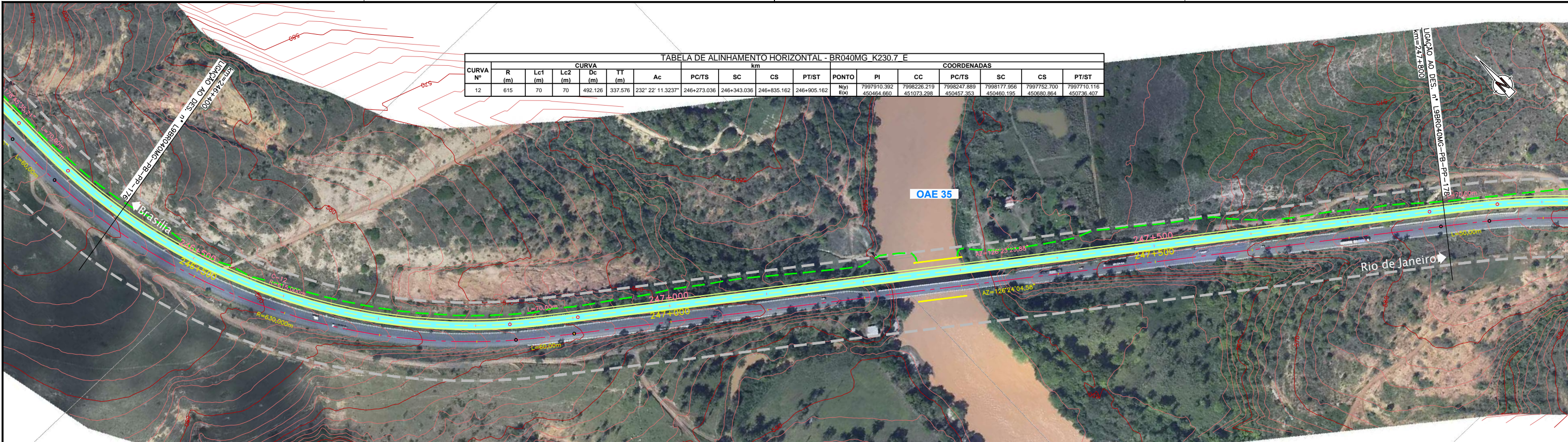
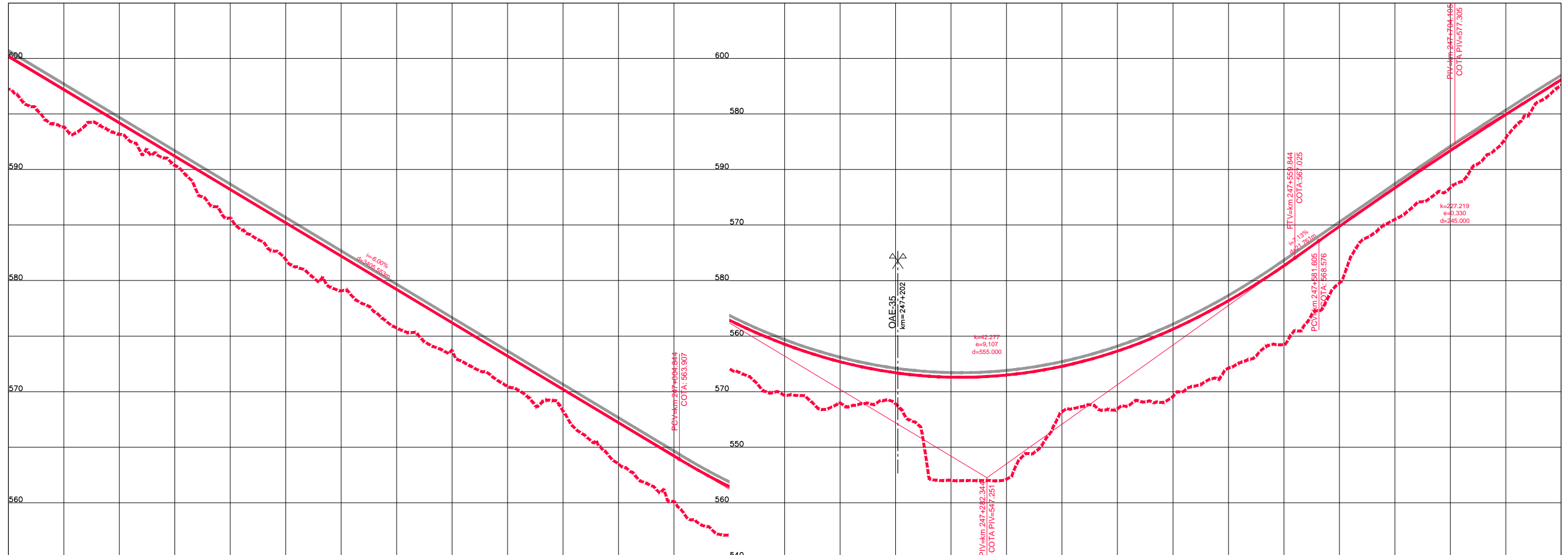


Em cópias deste desenho com formato diferente do A1 atender à escala gráfica
 N:1404-08- BR040- LOTE 1 AP. PAV. 02 PROJ. TRAMONTE L.P. DE BR. CORR. V. VALS. BARRAGENS P. PLAT. PP. 130-2013-02
 N:1404-08- BR040- LOTE 1 AP. PAV. 02 PROJ. TRAMONTE L.P. DE BR. CORR. V. VALS. BARRAGENS P. PLAT. PP. 130-2013-02



| TABELA DE ALINHAMENTO HORIZONTAL - BR040MG K230.7 E | | | | | | | | | | | | | | | | | |
|---|-------|---------|---------|---------|---------|-------------------|-------------|-------------|-------------|-------------|---------------|---------------------------|---------------------------|---------------------------|---------------------------|---------------------------|---------------------------|
| CURVA Nº | CURVA | | | | | | COORDENADAS | | | | | | | | | | |
| | R (m) | Lc1 (m) | Lc2 (m) | Dc (m) | TT (m) | Ac | PC/TS | SC | CS | PT/ST | PONTO | PI | CC | PC/TS | SC | CS | PT/ST |
| 12 | 615 | 70 | 70 | 492.126 | 337.576 | 232° 22' 11.3237" | 246+273.036 | 246+343.036 | 246+835.162 | 246+905.162 | NIVEL EIXO | 7997910.352 450464.660 | 7996226.219 451073.298 | 7998247.889 450457.953 | 7998177.956 450460.195 | 7997752.700 450800.864 | 7997710.116 450736.407 |



| | | | | | | | | | | | | | | | |
|---|---------|---------|---------|---------|---------|---------|---------|---------|---------|---------|---------|---------|---------|---------|---------|
| COTAS TERRENO PISTA NOVA ESQUERDA/DIREITA | 597.239 | 593.177 | 585.635 | 579.085 | 573.748 | 568.655 | 563.122 | 554.656 | 553.002 | 547.113 | 553.465 | 557.113 | 564.771 | 573.349 | 562.579 |
| COTAS PROJETO PISTA NOVA ESQUERDA/DIREITA | 600.210 | 594.208 | 588.206 | 582.204 | 576.202 | 570.199 | 564.197 | 559.266 | 556.698 | 556.495 | 556.657 | 563.184 | 569.879 | 576.704 | 583.088 |
| ESTAQUEAMENTO | 12320 | 12325 | 12330 | 12335 | 12340 | 12345 | 12350 | 12355 | 12360 | 12365 | 12370 | 12375 | 12380 | 12385 | 12390 |
| QUILOMETRAGEM | 246+400 | 246+500 | 246+600 | 246+700 | 246+800 | 246+900 | 247+000 | 247+100 | 247+200 | 247+300 | 247+400 | 247+500 | 247+600 | 247+700 | 247+800 |