

Em cópia deste desenho com formato diferente do A1 atender à escala gráfica

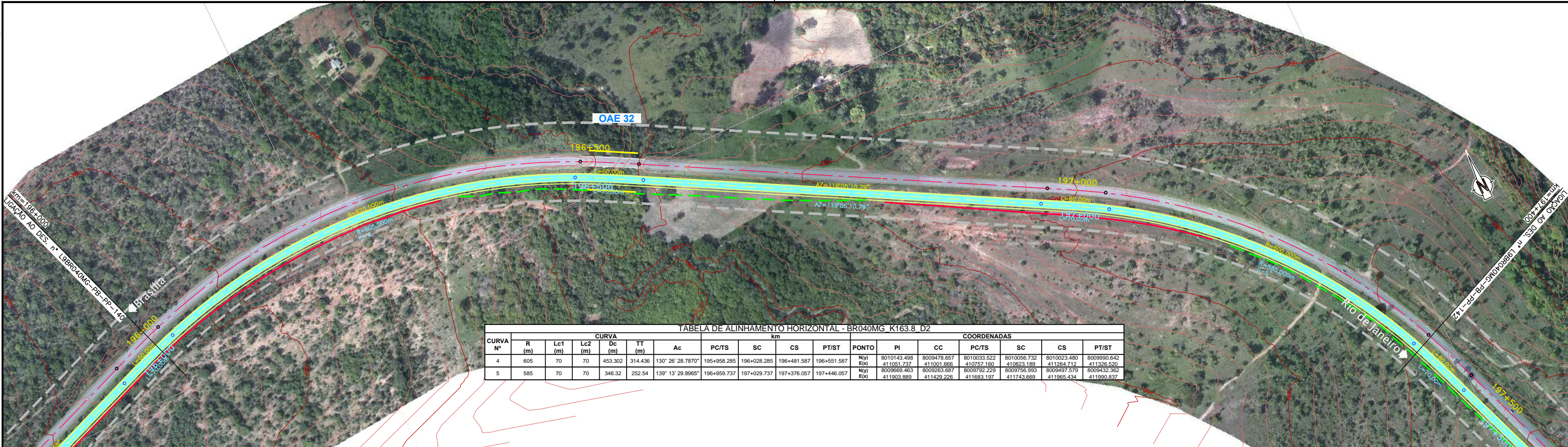
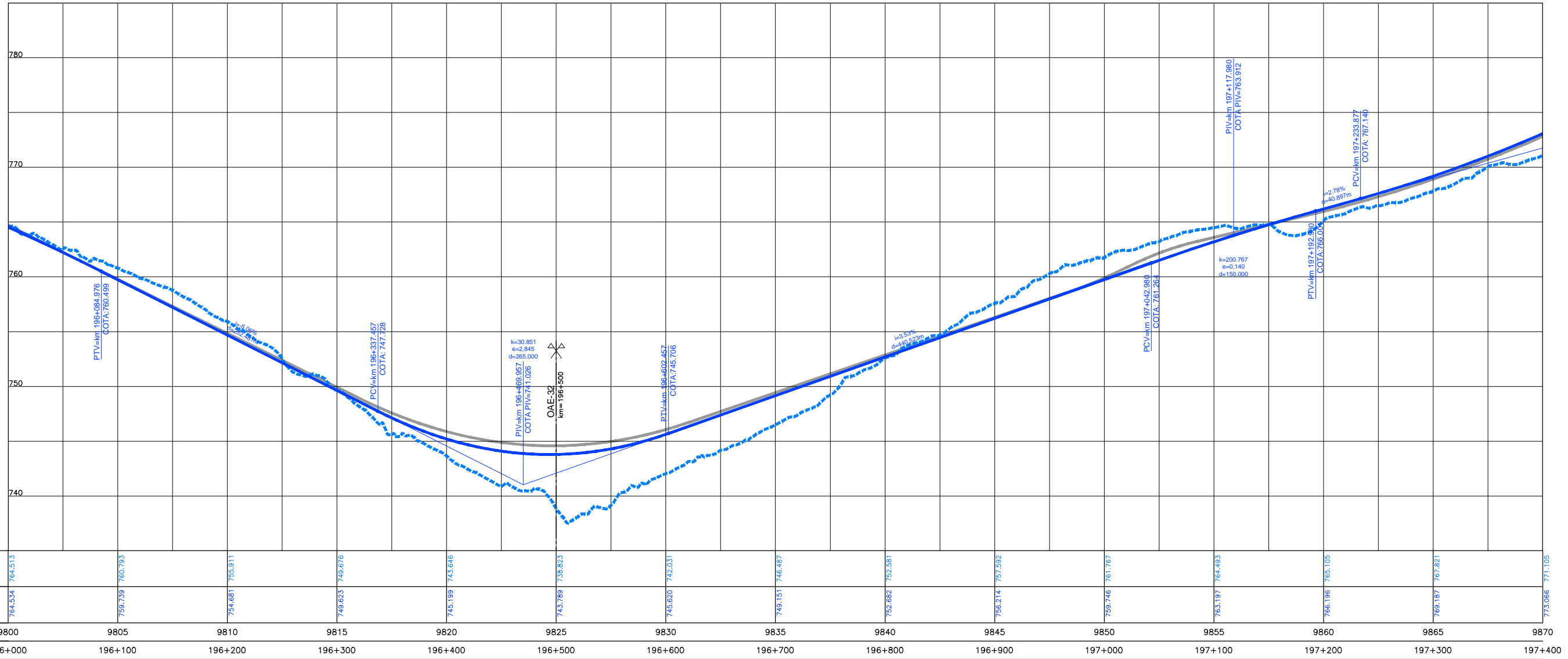


TABELA DE ALINHAMENTO HORIZONTAL - BR040MG K163.8 D2

CURVA Nº	CURVA						COORDENADAS										
	R (m)	Lc1 (m)	Lc2 (m)	Dc (m)	TT (m)	Ac	PC/TS	SC	CS	PT/ST	PONTO	NI/PI	CC	PC/TS	SC	CS	PT/ST
4	605	70	70	453,302	314,436	130° 26' 28,7870"	195+958,285	196+028,285	196+481,587	196+551,587	Ni/PI Eli/PI	8010143,498 411051,737	8009478,657 411001,666	8010033,522 410757,160	8010056,732 410823,189	8010023,480 411264,712	8009990,642 411326,520
5	585	70	70	346,32	252,54	139° 13' 29,8965"	196+959,737	197+029,737	197+376,057	197+446,057	Ni/PI Eli/PI	8009669,463 411903,889	8009263,687 411429,226	8009792,229 411683,197	8009756,993 411743,669	8009497,579 411965,434	8009432,362 411990,837



COTAS TERRENO PISTA NOVA ESQUERDA/DIREITA	764,534	764,513	758,739	760,793	754,681	755,911	749,623	749,616	745,189	743,646	743,789	738,823	745,620	742,031	749,151	746,487	752,681	756,214	757,592	759,746	761,767	763,197	764,933	766,196	765,105	769,187	767,821	773,066	771,105
COTAS PROJETO PISTA NOVA ESQUERDA/DIREITA	764,534	764,513	758,739	760,793	754,681	755,911	749,623	749,616	745,189	743,646	743,789	738,823	745,620	742,031	749,151	746,487	752,681	756,214	757,592	759,746	761,767	763,197	764,933	766,196	765,105	769,187	767,821	773,066	771,105
ESTAQUEAMENTO	9800	9805	9810	9815	9820	9825	9830	9835	9840	9845	9850	9855	9860	9865	9870														
QUILOMETRAGEM	196+000	196+100	196+200	196+300	196+400	196+500	196+600	196+700	196+800	196+900	197+000	197+100	197+200	197+300	197+400														



**CONCESSIONÁRIA
BR040**



Projeto: **BR-040 DF / GO / MG**
TRECHO BRASÍLIA / DF - JUÍZ DE FORA / MG

Projeto: Paulo Gomes/João Campos
Colaborou: Luis Lima/Carlos Martins
Desenhou: Natacha Rodrigues
Resp. Téc: Luis Seraphim
CREA: SO-0601479273

Elaborou	Data

Escalas:

Designação: PROJETO - CONTRATO CLÁUSULA 6.10
TRAÇADO
PROJETO GEOMÉTRICO
km 196+000 ao km 197+400

Número: **L9BR040MG-PB-PP-141**
Rev: **0** Ním. Folha: **07** Data: **2014**