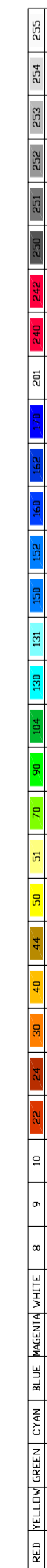
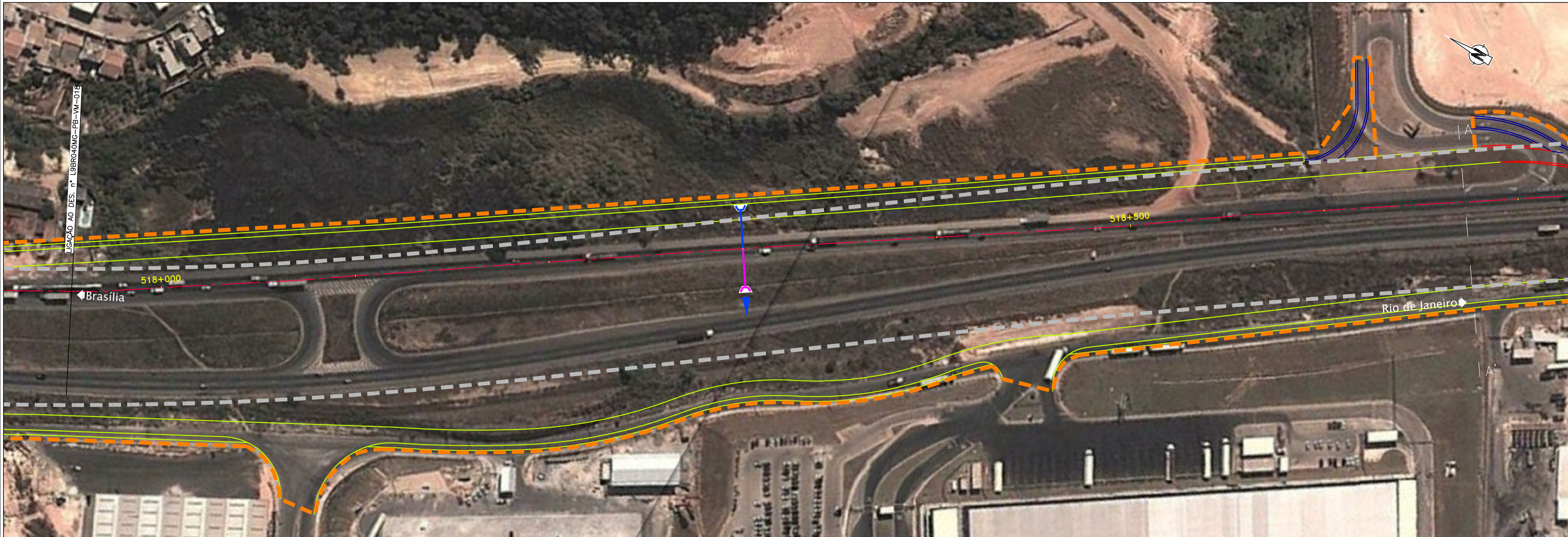


Em cópias deste desenho com formato diferente do A1 atender a escala gráfica:  
 N:\trabalho\BR040\A1\A1\_01.dwg, N:\trabalho\BR040\A1\A1\_02.dwg, N:\trabalho\BR040\A1\A1\_03.dwg, N:\trabalho\BR040\A1\A1\_04.dwg, N:\trabalho\BR040\A1\A1\_05.dwg, N:\trabalho\BR040\A1\A1\_06.dwg, N:\trabalho\BR040\A1\A1\_07.dwg, N:\trabalho\BR040\A1\A1\_08.dwg, N:\trabalho\BR040\A1\A1\_09.dwg, N:\trabalho\BR040\A1\A1\_10.dwg, N:\trabalho\BR040\A1\A1\_11.dwg, N:\trabalho\BR040\A1\A1\_12.dwg, N:\trabalho\BR040\A1\A1\_13.dwg, N:\trabalho\BR040\A1\A1\_14.dwg, N:\trabalho\BR040\A1\A1\_15.dwg, N:\trabalho\BR040\A1\A1\_16.dwg, N:\trabalho\BR040\A1\A1\_17.dwg, N:\trabalho\BR040\A1\A1\_18.dwg, N:\trabalho\BR040\A1\A1\_19.dwg, N:\trabalho\BR040\A1\A1\_20.dwg, N:\trabalho\BR040\A1\A1\_21.dwg, N:\trabalho\BR040\A1\A1\_22.dwg, N:\trabalho\BR040\A1\A1\_23.dwg, N:\trabalho\BR040\A1\A1\_24.dwg, N:\trabalho\BR040\A1\A1\_25.dwg, N:\trabalho\BR040\A1\A1\_26.dwg, N:\trabalho\BR040\A1\A1\_27.dwg, N:\trabalho\BR040\A1\A1\_28.dwg, N:\trabalho\BR040\A1\A1\_29.dwg, N:\trabalho\BR040\A1\A1\_30.dwg, N:\trabalho\BR040\A1\A1\_31.dwg, N:\trabalho\BR040\A1\A1\_32.dwg, N:\trabalho\BR040\A1\A1\_33.dwg, N:\trabalho\BR040\A1\A1\_34.dwg, N:\trabalho\BR040\A1\A1\_35.dwg, N:\trabalho\BR040\A1\A1\_36.dwg, N:\trabalho\BR040\A1\A1\_37.dwg, N:\trabalho\BR040\A1\A1\_38.dwg, N:\trabalho\BR040\A1\A1\_39.dwg, N:\trabalho\BR040\A1\A1\_40.dwg, N:\trabalho\BR040\A1\A1\_41.dwg, N:\trabalho\BR040\A1\A1\_42.dwg, N:\trabalho\BR040\A1\A1\_43.dwg, N:\trabalho\BR040\A1\A1\_44.dwg, N:\trabalho\BR040\A1\A1\_45.dwg, N:\trabalho\BR040\A1\A1\_46.dwg, N:\trabalho\BR040\A1\A1\_47.dwg, N:\trabalho\BR040\A1\A1\_48.dwg, N:\trabalho\BR040\A1\A1\_49.dwg, N:\trabalho\BR040\A1\A1\_50.dwg, N:\trabalho\BR040\A1\A1\_51.dwg, N:\trabalho\BR040\A1\A1\_52.dwg, N:\trabalho\BR040\A1\A1\_53.dwg, N:\trabalho\BR040\A1\A1\_54.dwg, N:\trabalho\BR040\A1\A1\_55.dwg, N:\trabalho\BR040\A1\A1\_56.dwg, N:\trabalho\BR040\A1\A1\_57.dwg, N:\trabalho\BR040\A1\A1\_58.dwg, N:\trabalho\BR040\A1\A1\_59.dwg, N:\trabalho\BR040\A1\A1\_60.dwg, N:\trabalho\BR040\A1\A1\_61.dwg, N:\trabalho\BR040\A1\A1\_62.dwg, N:\trabalho\BR040\A1\A1\_63.dwg, N:\trabalho\BR040\A1\A1\_64.dwg, N:\trabalho\BR040\A1\A1\_65.dwg, N:\trabalho\BR040\A1\A1\_66.dwg, N:\trabalho\BR040\A1\A1\_67.dwg, N:\trabalho\BR040\A1\A1\_68.dwg, N:\trabalho\BR040\A1\A1\_69.dwg, N:\trabalho\BR040\A1\A1\_70.dwg, N:\trabalho\BR040\A1\A1\_71.dwg, N:\trabalho\BR040\A1\A1\_72.dwg, N:\trabalho\BR040\A1\A1\_73.dwg, N:\trabalho\BR040\A1\A1\_74.dwg, N:\trabalho\BR040\A1\A1\_75.dwg, N:\trabalho\BR040\A1\A1\_76.dwg, N:\trabalho\BR040\A1\A1\_77.dwg, N:\trabalho\BR040\A1\A1\_78.dwg, N:\trabalho\BR040\A1\A1\_79.dwg, N:\trabalho\BR040\A1\A1\_80.dwg, N:\trabalho\BR040\A1\A1\_81.dwg, N:\trabalho\BR040\A1\A1\_82.dwg, N:\trabalho\BR040\A1\A1\_83.dwg, N:\trabalho\BR040\A1\A1\_84.dwg, N:\trabalho\BR040\A1\A1\_85.dwg, N:\trabalho\BR040\A1\A1\_86.dwg, N:\trabalho\BR040\A1\A1\_87.dwg, N:\trabalho\BR040\A1\A1\_88.dwg, N:\trabalho\BR040\A1\A1\_89.dwg, N:\trabalho\BR040\A1\A1\_90.dwg, N:\trabalho\BR040\A1\A1\_91.dwg, N:\trabalho\BR040\A1\A1\_92.dwg, N:\trabalho\BR040\A1\A1\_93.dwg, N:\trabalho\BR040\A1\A1\_94.dwg, N:\trabalho\BR040\A1\A1\_95.dwg, N:\trabalho\BR040\A1\A1\_96.dwg, N:\trabalho\BR040\A1\A1\_97.dwg, N:\trabalho\BR040\A1\A1\_98.dwg, N:\trabalho\BR040\A1\A1\_99.dwg, N:\trabalho\BR040\A1\A1\_100.dwg

LIGAÇÃO AO DES. N° L9BR040MG-PB-VM-018



RODOVIA : BR-040/MG

PLANTA

	Pista Nova		Marco Quilométrico (existente)
	Implantação da 3ª Faixa		Passarelas
	Faixa de Domínio		Bueiro Projetado
	Faixa de Desapropriação		Bueiro Existente
	Offset de Aterro		
	Offset de Corte		



CONCESSIONÁRIA  
BR040



Projeto: **BR-040 DF / GO / MG**  
TRECHO BRASÍLIA / DF - JUÍZ DE FORA / MG

Projeto: Paulo Gomes / João Campos  
 Colaborou: Miguel Mendes  
 Desenhou: Natácha Rodrigues  
 Resp. Téc: Luis Seraphim  
 CREA-50.0601479273

Elaborou	Data	Descrição

Escala: 1:1000 (A1)  
1:2000 (A3)

Designação: PROJETO - CONTRATO CLÁUSULA 6.10  
**TRAÇADO**  
VIAS MARGINAIS  
FOLHA 19

Número: L9BR040MG-PB-VM-019  
Rev. 0  
Núm. Folha: - / -  
Data: 07 / 2014