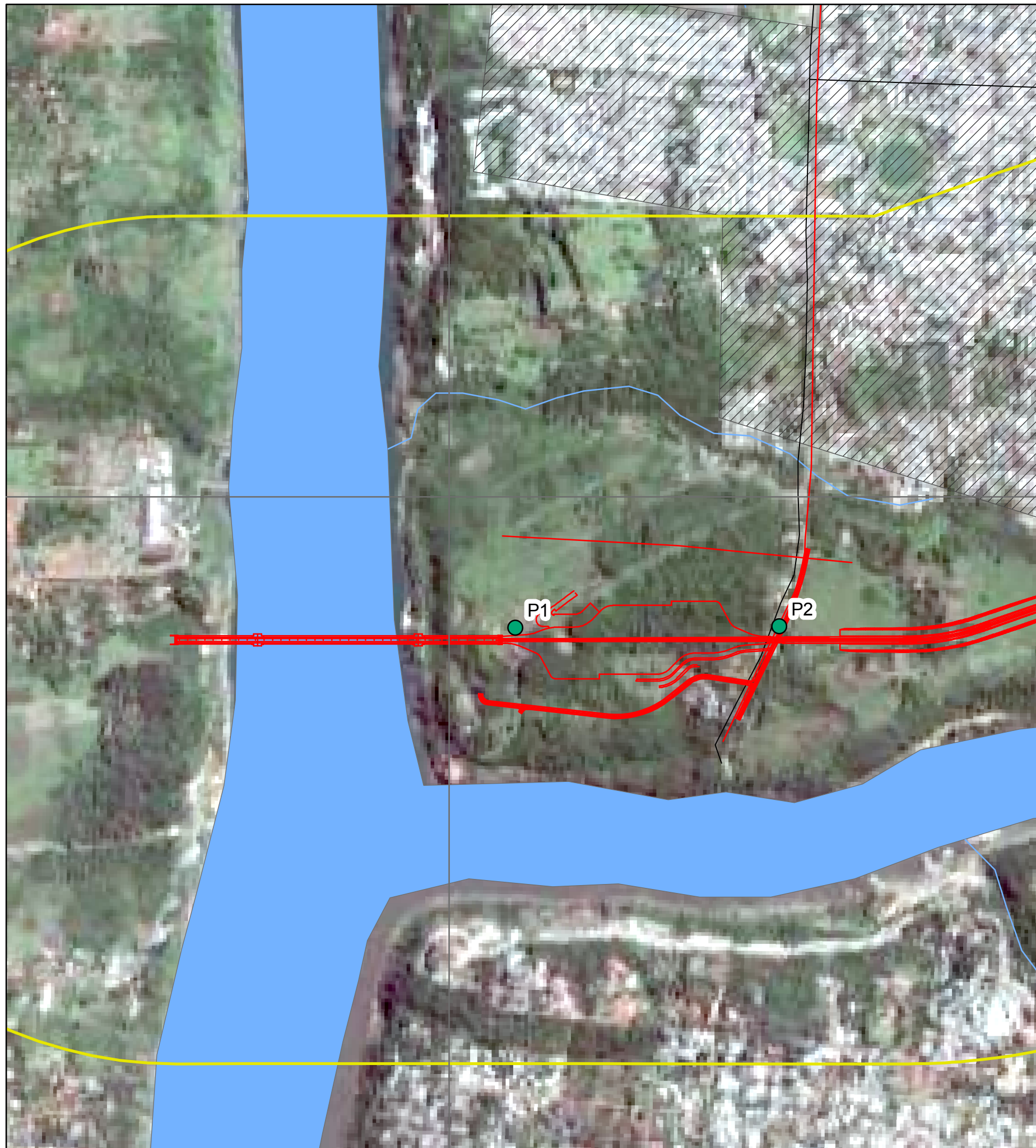


742000

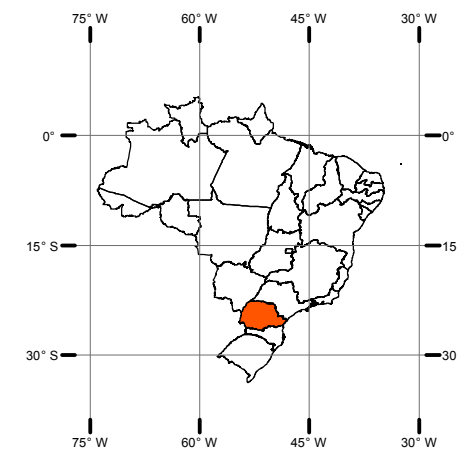


742000

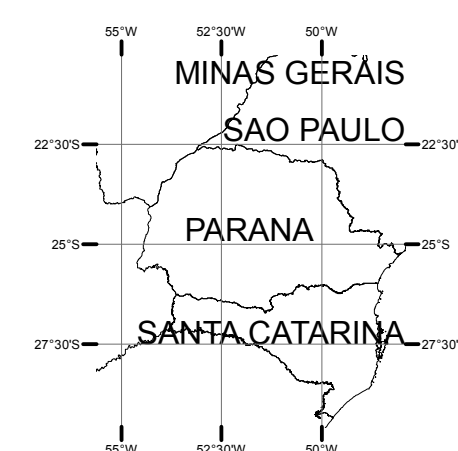
7168000

7168000





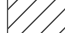
Localização



Situação

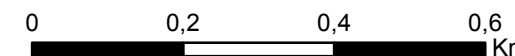


Legenda

-  Ponto de Monitoramento de Ruídos
-  Acesso a 2ª ponte
-  Área de Influência Indireta - AII (2,5 km)
-  Área de Influência Direta - AID (1,0 km)
-  Area Urbana



Projeção Universal Transversa de Mercator
Datum SAD-69 Fuso UTM 21 Sul
Escala 1:10.000




Fonte:
- Mapa Cartográfico, Folha Foz do Iguaçu, SG.21-X-D-V-2, MI-2846-2,
Diretoria de Serviço Geográfico do Exército Brasileiro, 1997.

Mapa de Monitoramento de Ruídos. Folha 1

Empreendimento **Implantação do Acesso à Segunda Ponte Internacional Brasil-Paraguai**

Empreendedor **DNIT - Departamento Nacional de Infra-Estrutura de Transportes**

	Município	Foz do Iguaçu	Estado	Paraná
	Resp. Técnica	PROGAIA - Engenharia e Meio Ambiente Ltda.		