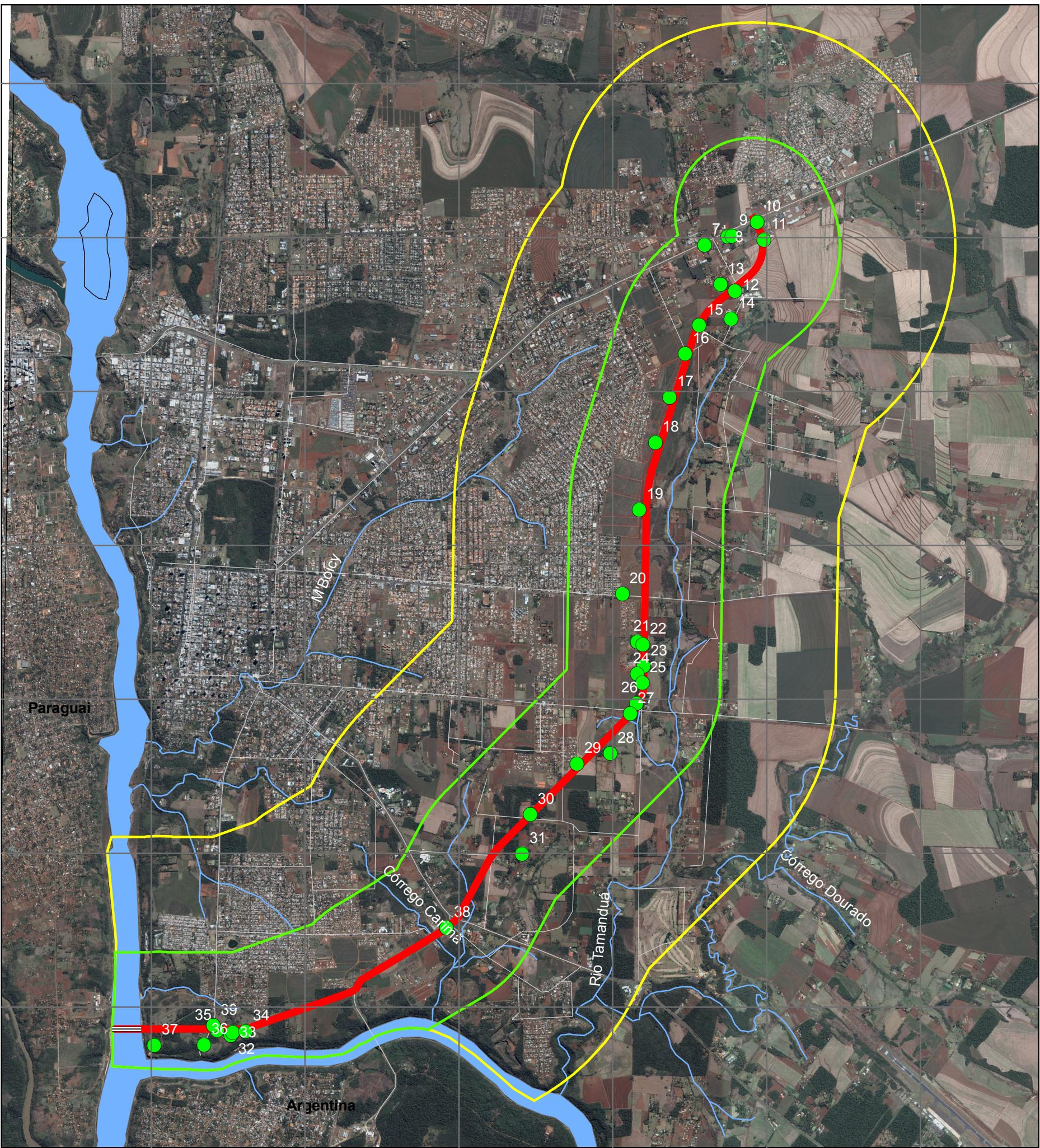


742000 744000 746000 748000 750000 752000

7180000
7178000
7176000
7174000
7172000
7170000
7168000

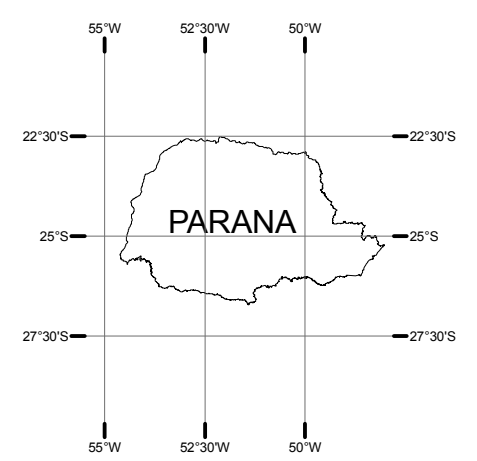


742000 744000 746000 748000 750000 752000






Localização



Situação



Legenda

-  Ponte Internacional
-  Hidrografia
-  AID - Area de Influência Direta
-  All - Area de Influência Indireta
-  Pontos Socioeconomia



Projeção Universal Transversa de Mercator
 Datum SAD-69 Fuso UTM 21 Sul
 Escala 1:55.000
 0 1 2 3 Km

Fonte:
 - Google Earth Pro, Imagem Digital Globe,
 Sensor QuickBird QB02, aquisição das cenas
 06-09-2006, Banda Pan_MS1

Mapa 10 - Mapa de Pontos de Socioeconomia

Empreendimento Implantação do Acesso à Segunda Ponte Internacional Brasil-Paraguai

Empreendedor DNIT - Departamento Nacional de Infra-Estrutura de Transportes



Município Foz do Iguaçu

Estado Paraná

Resp. Técnica PROGAIA - Engenharia e Meio Ambiente Ltda.