

# Worker's Environmental Education Project - PEAT

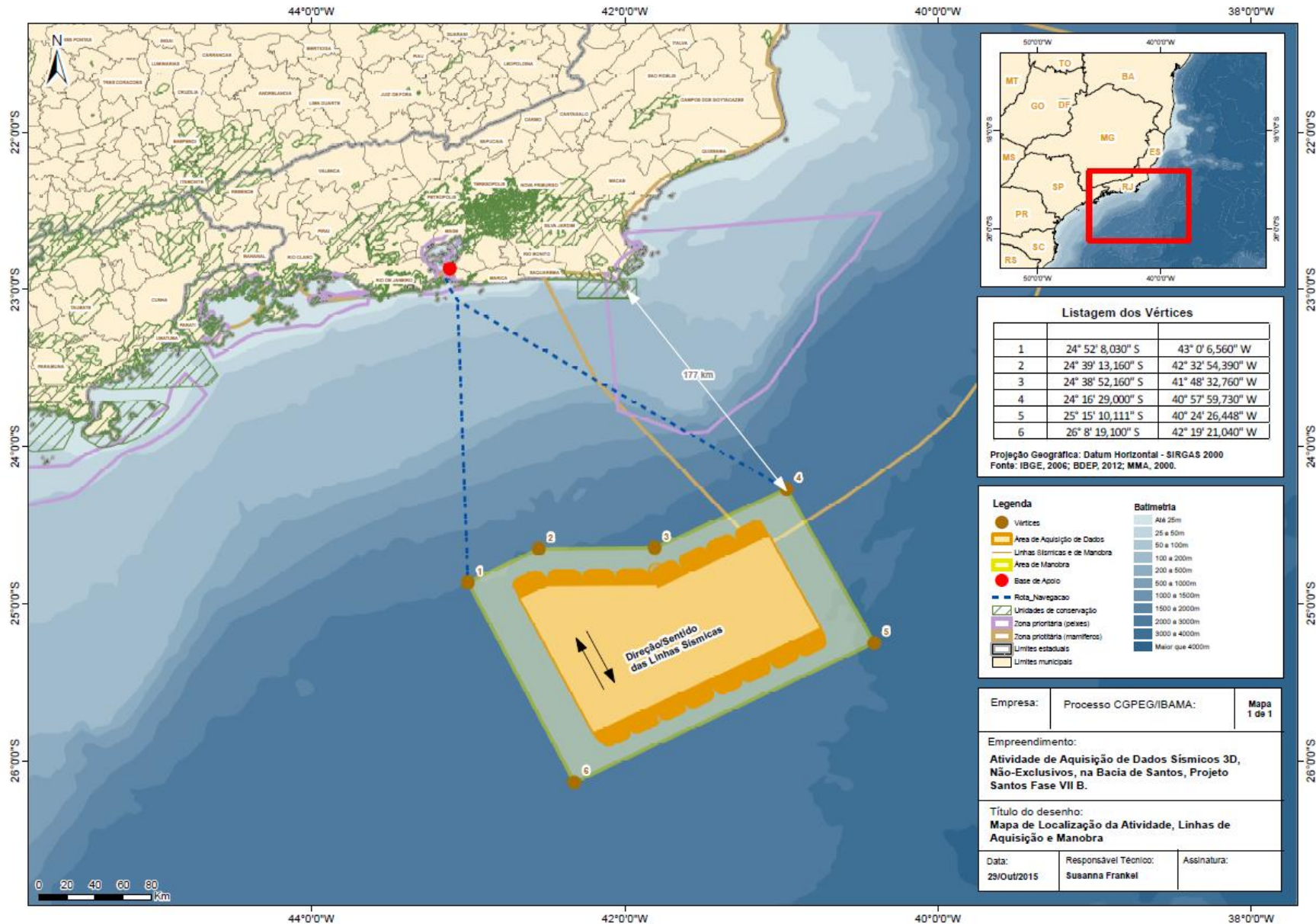
3D Maritime Seismic Survey  
Santos Basin, Phase VII B

## Regional Module

*This project is a requirement of the environmental licensing process for seismic survey operations led by IBAMA.*



# Data Acquisition Area



Seismic Vessel– Oceanic Vega

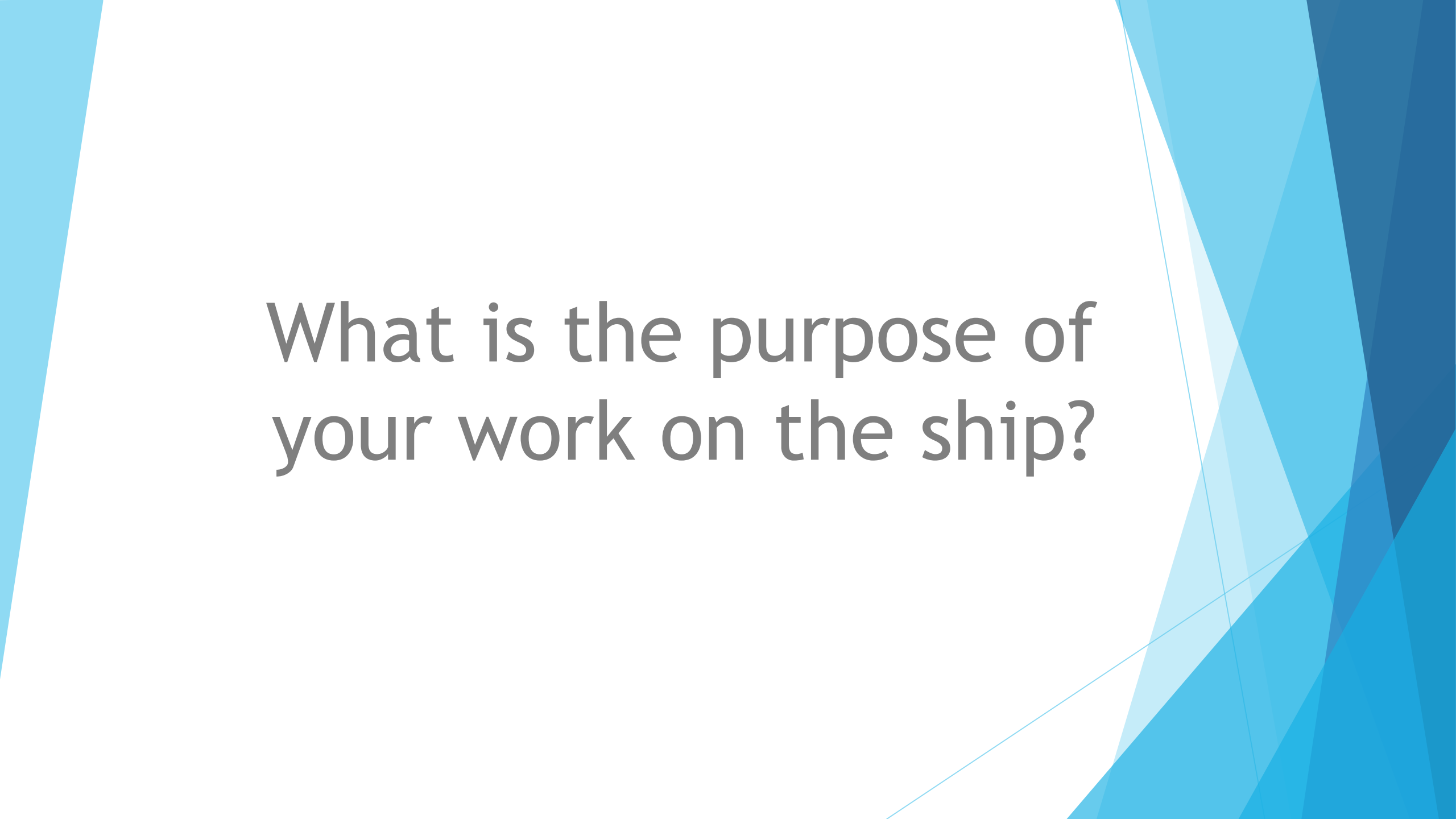


Support Vessel– Bourbon Cormorant



Support Vessel– Ocean Dream

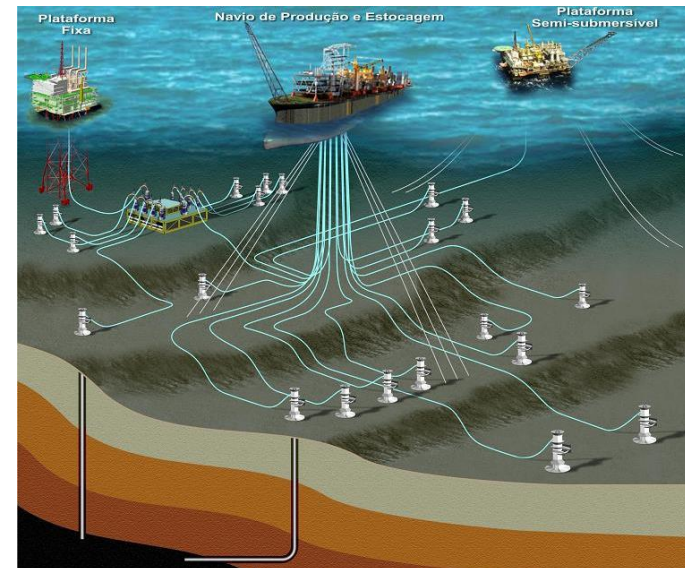
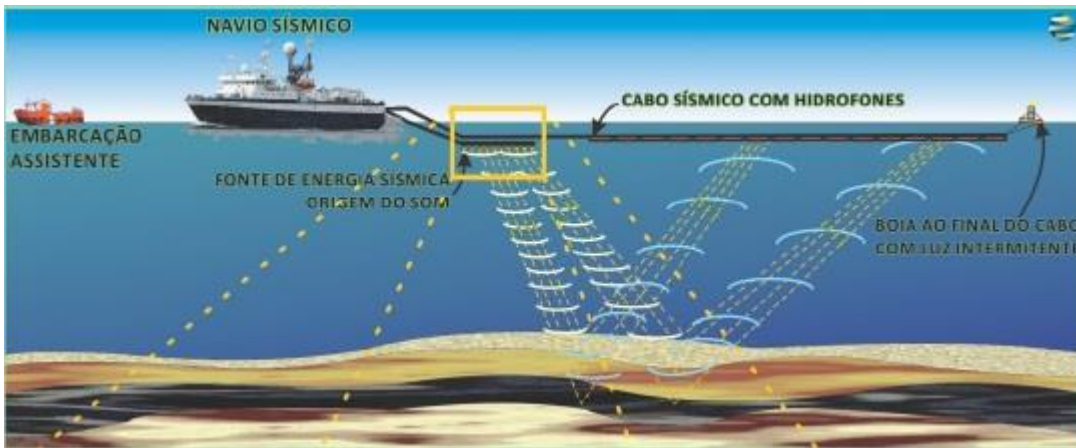


The background features abstract, overlapping geometric shapes in various shades of blue, ranging from light sky blue to deep navy blue. These shapes are primarily located on the left and right sides of the frame, creating a modern, dynamic feel. The central area is a plain white space where the text is located.

What is the purpose of  
your work on the ship?



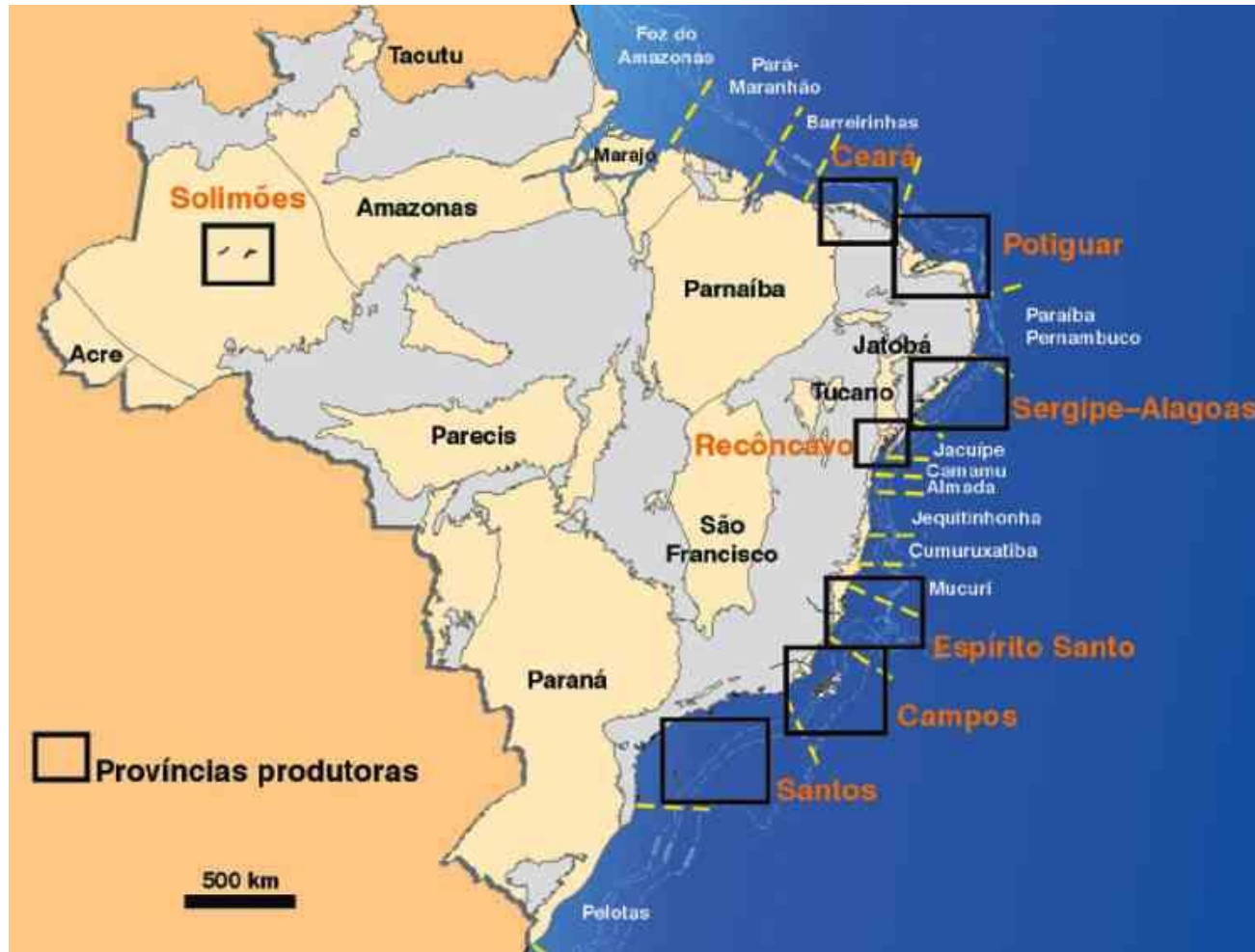
<b>EXPLORATION ACTIVITIES</b>	<b>PRODUCTION ACTIVITIES</b>
-------------------------------	------------------------------



The background features abstract, overlapping geometric shapes in various shades of blue, ranging from light sky blue to deep navy blue. These shapes are primarily located on the left and right sides of the frame, creating a modern, dynamic feel. The central area is a plain white space where the text is located.

Why we produce oil?

# Sedimentary basins. Oil/gas Producing Areas



Eight basins supply the Brazilian domestic production of oil: Solimões, Ceará, Potiguar, Sergipe-Alagoas, Recôncavo, Espírito Santo, Campos e Santos.

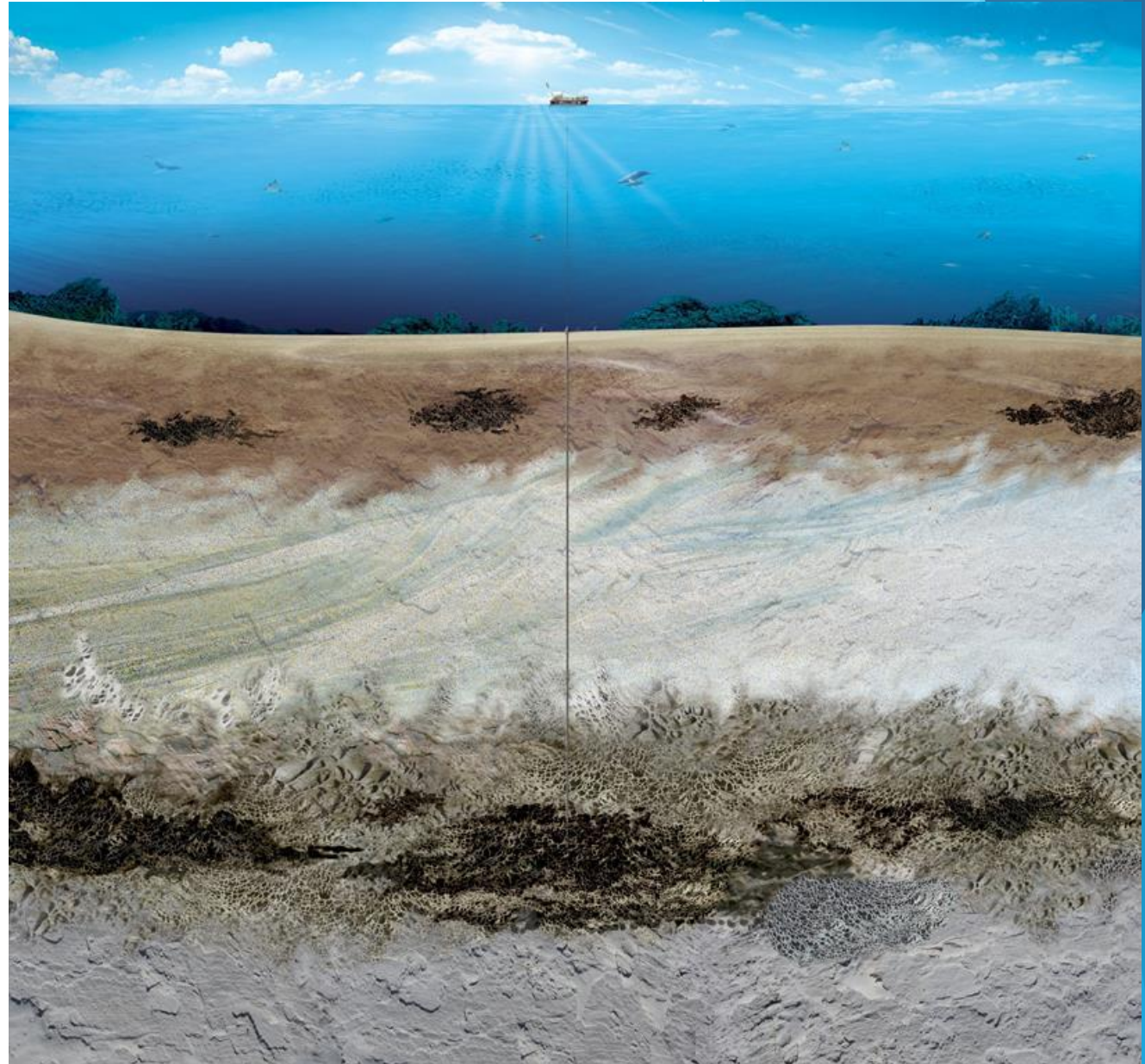
# Pre-salt

- The pre-salt is an oil reserve area found under a deep layer of salt rock.
- The pre-salt reserves found in Brazilian coast are the deepest in the world.
- They represent the largest oil field ever found in a pre-salt layer.
- The word "pre" in pre-salt refers to geologic time and not to depth. It means that this layer was formed before the salt layer.

Post-salt

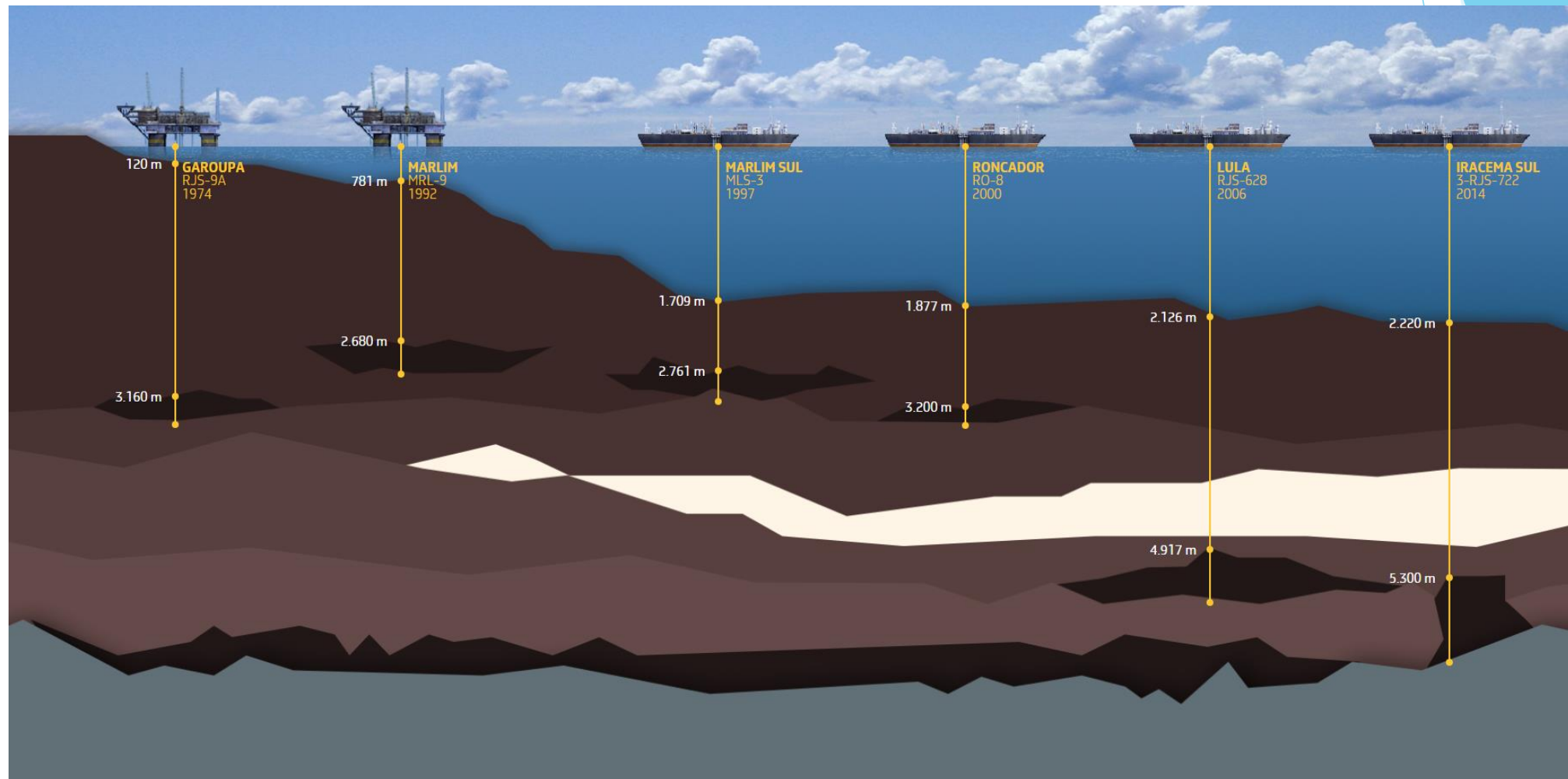
Salt

Pre-salt



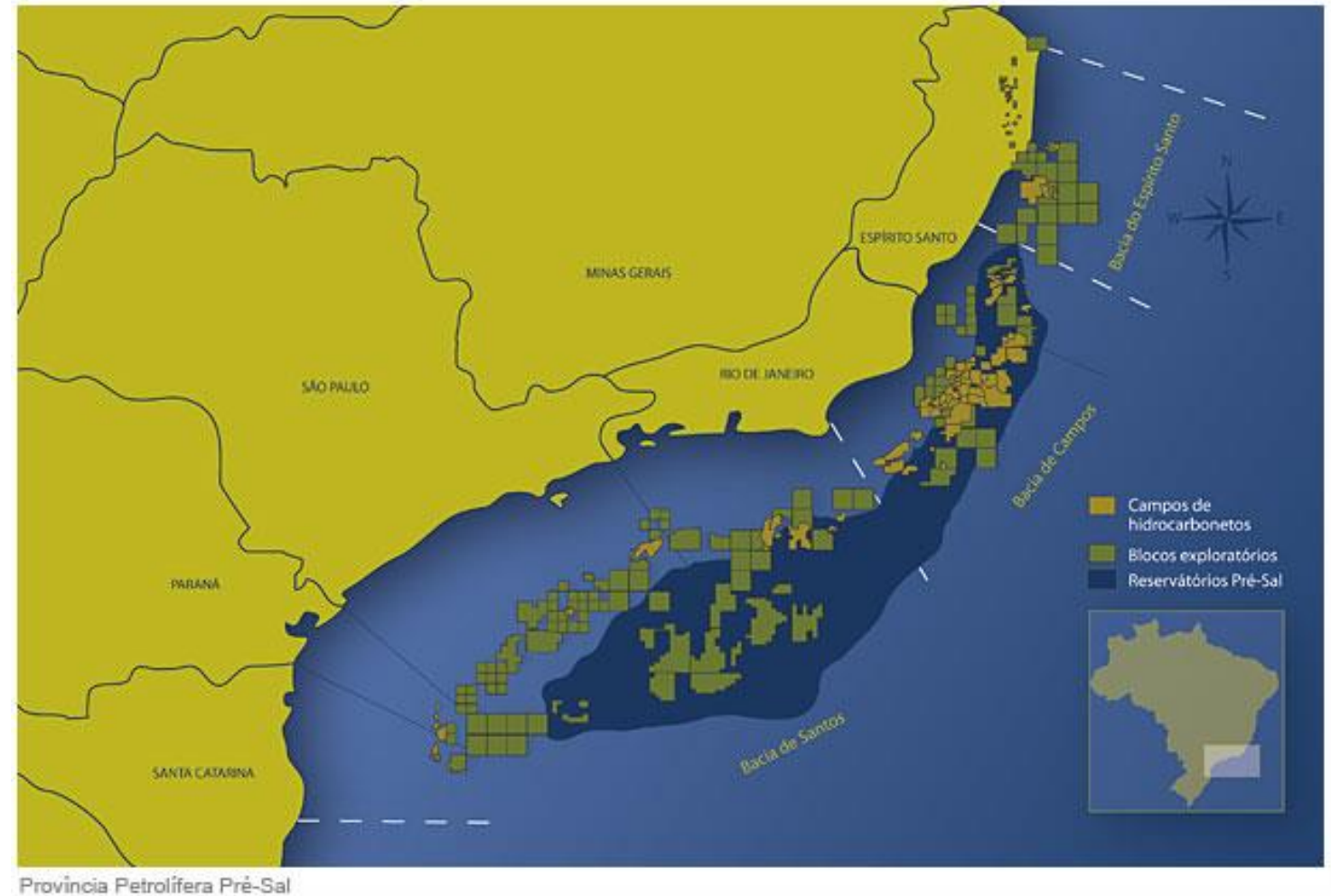


# Pre-salt

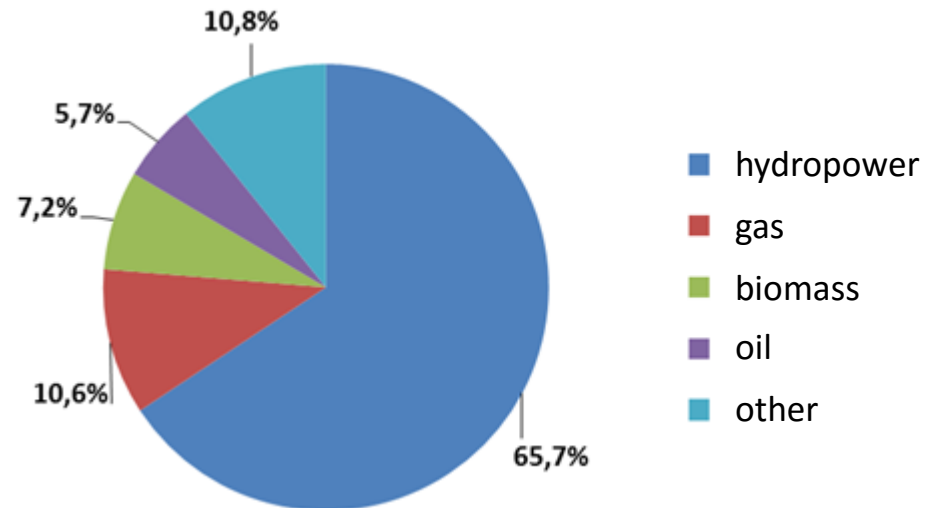


# Pre-salt

- The pre-salt layer has roughly 800 km long by 200 km wide.
- The daily production of oil in pre-salt layer increased from about 41,000 barrels/day in 2010 to 1 million barrels/day in mid 2016.



# Brazilian energy model



- ▶ Renewable x non renewable?
- ▶ Clean energy?

The background features abstract, overlapping geometric shapes in various shades of blue, ranging from light sky blue to deep navy blue. The shapes are primarily triangles and polygons, creating a dynamic, modern aesthetic. The text is centered on a white background that is partially framed by these blue shapes.

What are the problems  
in the oil production?

Why this activity is so  
controlled?

# Environmental and social impacts

- ▶ Concentration of richness and power
- ▶ Coastal cities growth without infrastructure - violence and poverty
- ▶ Generation of expectations
- ▶ Conflicts with others activities, like fishery
- ▶ Risks for navigation
- ▶ Oil spill hazard
- ▶ Danger to the lives of workers
- ▶ Pollution - residues, emissions and effluents
- ▶ Possible interference in the life of marine mammals - whales and dolphins

# Brazilian environmental law

## ▶ Control of potentially polluting activities

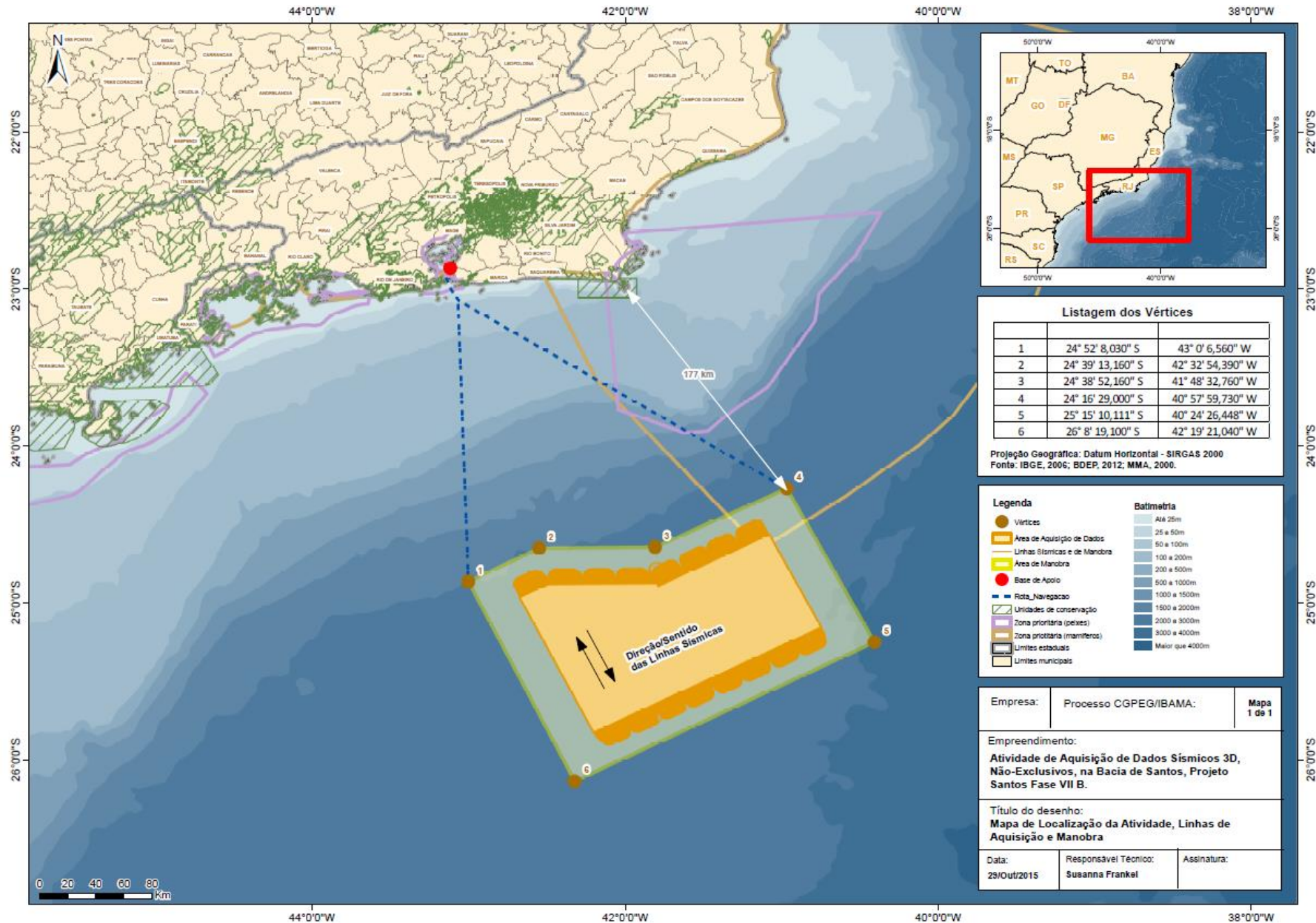
- **National Environment Policy/1981** - Indicates a lot of environment protection measures. Creates SISNAMA and CONAMA.
- **CONAMA nº 01/1986** - It provides the basic criteria and guidelines for elaboration of environmental impact studies (EIA-RIMA).
- **Federal Constitution (Art. 225)/1988** - Everyone has the right to an ecologically balanced. It imposes to the government and society the duty to defend it and preserve it for present and future generations.
- **Environmental Crimes Law /1998** - It defines in Article 60, as an environmental crime punishable by imprisonment, fine or both, the practice of potentially polluting activities without proper environmental licensing.
- **CONAMA nº 265/2000** - In response to oil spill occurred at Guanabara Bay in 2000. It determines the need for environmental audit.

# Case Studies

Conflicts - the ocean as a common area to several activities:

- ▶ seismic work routine changing the local artisanal fishery activity;
- ▶ Threat to local biodiversity.

# Case Studies - A day of work on the seismic acquisition data





# Case Studies

## A day of work on the seismic vessel

interruption of the seismic activity - conflict of use with a fishery boat



Estudo Ambiental de Sísmica, 2008 - Ecology Brasil.

# Case Studies

a day of work on the seismic vessel



Fonte: Estudo Ambiental de Sísmica, 2008 - Ecology Brasil.

# Case Studies



# Case Studies

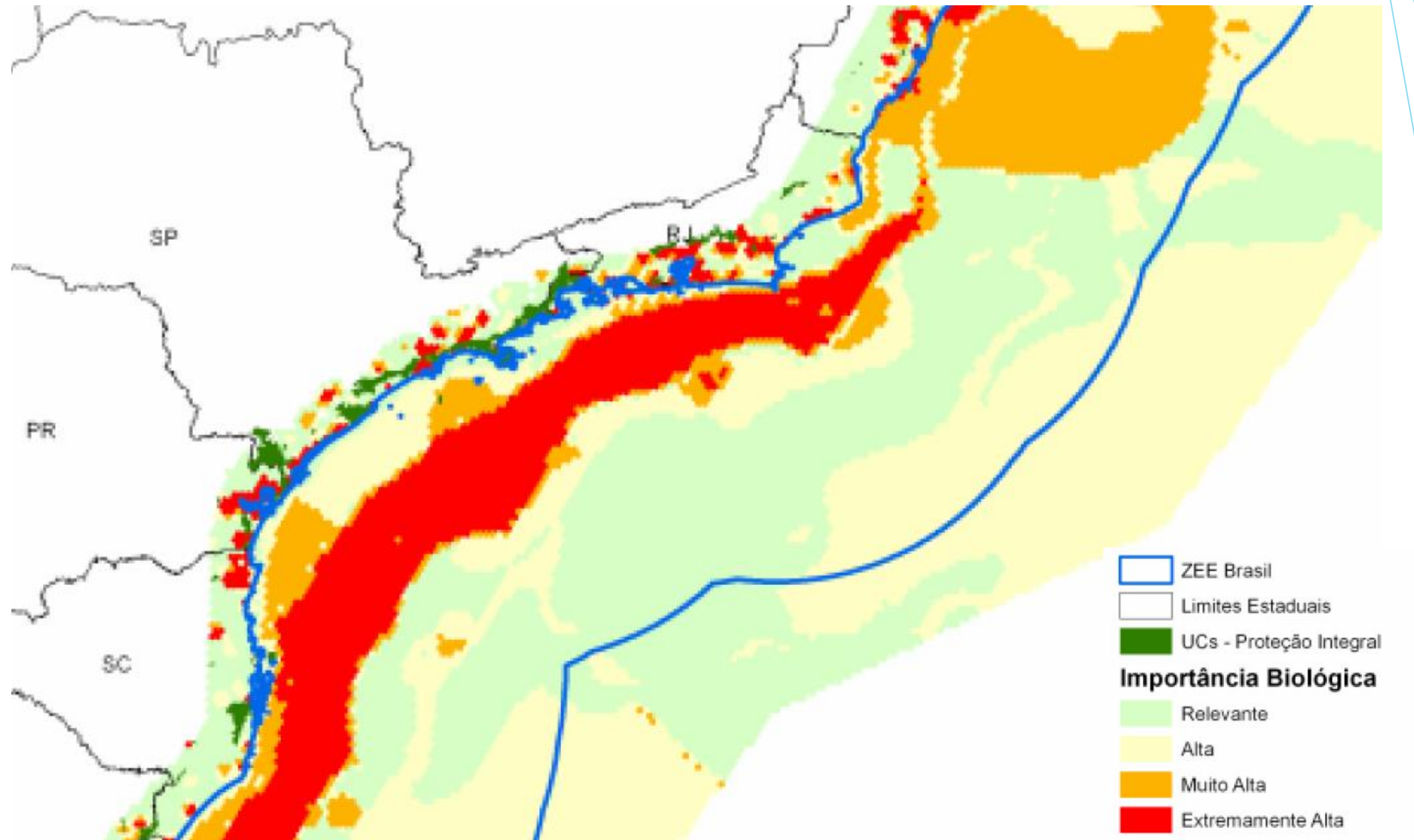
## a day of work on the seismic vessel

interruption of the seismic activity - conflict of use - threat to local biodiversity



Fonte: Estudo Ambiental de Sísmica, 2008 - Ecology Brasil.

# Case Studies



# Group work



# Conflicts

- ▶ The ocean is a public good of common use
- ▶ Environmental public management prioritizes a specific use
- ▶ Who wins and who loses with the activity?