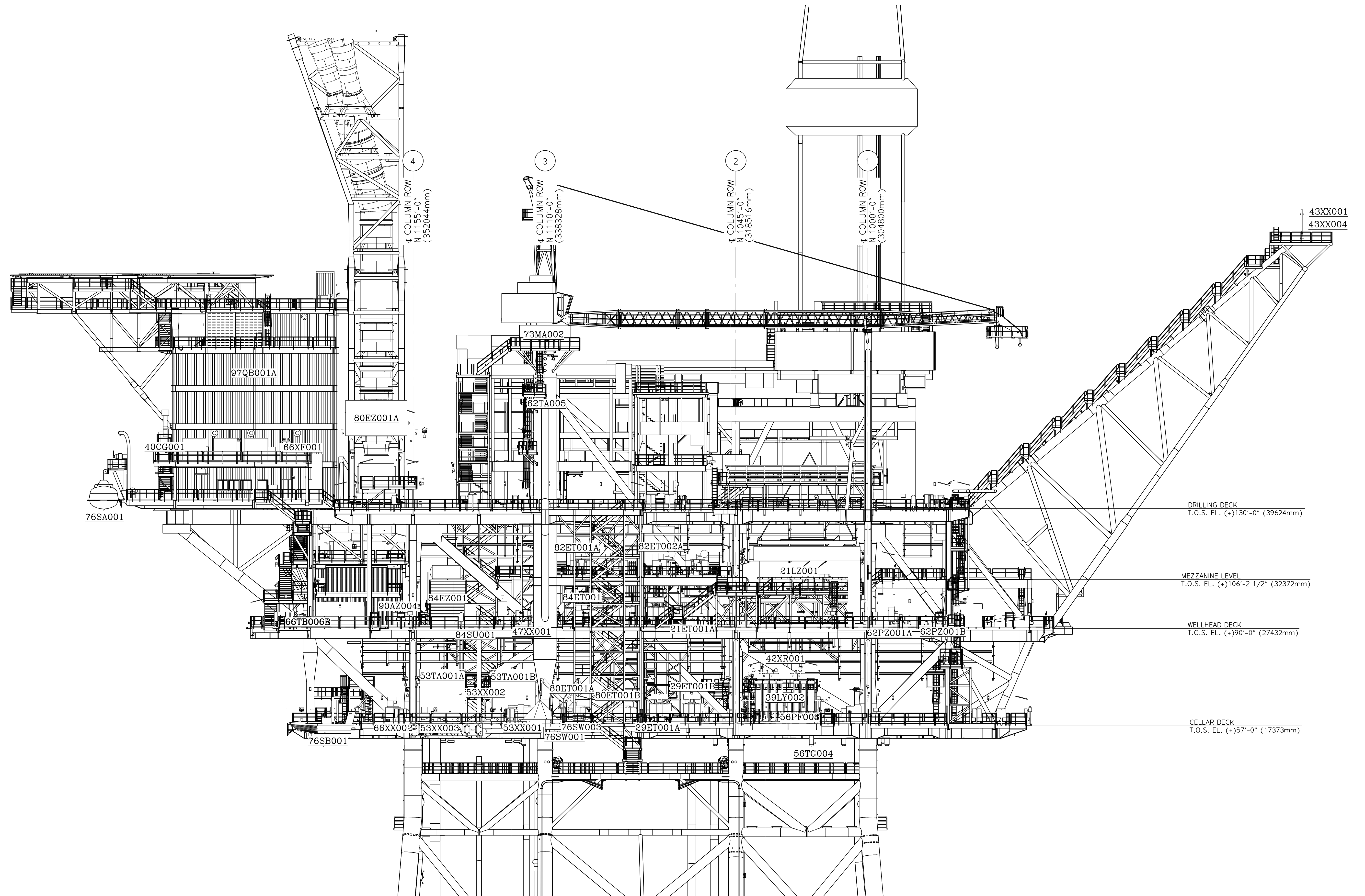


This document is issued upon the user's agreement not to (1) reproduce the material described therein, in whole or in part, nor the material described therein; (2) use the document for any purpose other than as specifically permitted in writing by Wood Group USA; or (3) disclose or otherwise disseminate or allow any such disclosure or dissemination of this document or its contents to others except as specifically permitted in writing by Wood Group USA. "Wood Group USA" as used herein refers to Wood Group USA, Inc. and its affiliates.



WEST ELEVATION

REV	DATE	BY	DESCRIPTION	CHK	ENGR	APPR	CLIENT	SCALE	DATE	DWG. NO.	REV.
08C	27OCT17	KR	RE-ISSUED FOR CONSTRUCTION	CZ	MB	EMF				Kiewit WOOD GROUP USA, INC. PROJECT NO. 106663 CONTRACT NO. 4503367243 DESIGNED BY EB 15SEP15 DRAWN BY EB 15SEP15 CHECKED BY CZ 15SEP15 APPROVED BY LSE 15SEP15	SOUTH ATLANTIC HOLDING B.V. PEREGRINO II WELLHEAD PLATFORM 'C' - DECK EQUIPMENT LOCATION PLAN WEST ELEVATION
07C	30MAY17	KR	ISSUED FOR CONSTRUCTION	CZ	MB	EMF					
06	21FEB17	KR	RE-ISSUED FOR DESIGN	CZ	MB	EMF					
05	25OCT16	EB	RE-ISSUED FOR DESIGN	CZ	MB	EMF					
04	10MAR16	EB	RE-ISSUED FOR DESIGN	CZ	TFB	EMF					
03	29OCT15	EB	ISSUED FOR DESIGN	CZ	TFB	LSE					
02	08OCT15	EB	ISSUED FOR INFORMATION	CZ	TFB	LSE					
01	23SEP15	EB	ISSUED FOR CLIENT REVIEW	CZ	TFB	LSE					
09C	27OCT17	KR	RE-ISSUED FOR CONSTRUCTION	CZ	MB	EMF				C140-MU-L-XF-0005-01	08C