

TANGENT POINT-02
N=7410814
E=253167

TANGENT POINT-01
N=7410695
E=253310

ILT-SBC-001
E=216965
N=7435522

WHP-C
E=253825
N=7410345

LINE	TAG	LENG.(m)
GAS IMPORT	P10-UF-001	44329
FLEXIBLE JUMPER GI-01	HOLD	220
FLEXIBLE JUMPER GI-02	HOLD	85
FLEXIBLE JUMPER GI-03	HOLD	160
SSIV UMBILICAL	HOLD	475

DESCRIPTION	TAG	LAT. / LONG.	WD (m)
FJF-10 - PLET SSIV	HOLD	N 7410335 E 253671	120
FJF-11 - CONNECTION FLEXIBLE JUMPER + RIGID RISER	HOLD	N 7410326 E 253796	120
FJF-12 - PLET	C140-TEC-U-XD-0007-01	N 7435398 E 217117	117
FJF-13 - PLET / PIPELINE 8" GAS IMPORT	C140-TEC-U-XD-0007-01	N 7435397 E 217118	117
FJF-14 - PLEM	C140-TEC-U-XD-0006-01	N 7435452 E 217156	117
FJF-15 - FLEXIBLE JUMPER 02 / PLEM	C140-TEC-U-XD-0006-01	N 7435451 E 217155	117
FJF-16 - FLEXIBLE JUMPER 01 / PLEM	C140-TEC-U-XD-0006-01	N 7435453 E 217155	117

REFERENCE DOCUMENTS

1 - FOR REFERENCE DOCUMENT SEE C140-TEC-Y-XE-0001 - SHEET-114.

NOTES

1 - FOR GENERAL NOTES SEE C140-TEC-Y-XE-0001 - SHEET-114.
2 - HDG = HEADING (DIRECTION OF TIME IN RELATION TO THE TRUE NORTH).
3 - TOTAL JUMPER LENGTH INCLUDES EXTRA LENGTH TO ACCOMMODATE INSTALLATION TOLERANCES.

LEGEND:

FLOWLINE DEAD WEIGHT (FDW) [Symbol]

FRICION CLAMP [Symbol]

TOUCH DOWN POINT (TDP) [Symbol]

FLEXIBLE JUMPER FLOWLINE (FJF) [Symbol]

RISER FLOWLINE CONNECTION (RFC) [Symbol]

CROSSING [Symbol]

PLEM [Symbol]

PLET [Symbol]

PLET SSIV [Symbol]

PLET UCON [Symbol]

INSTALLED:

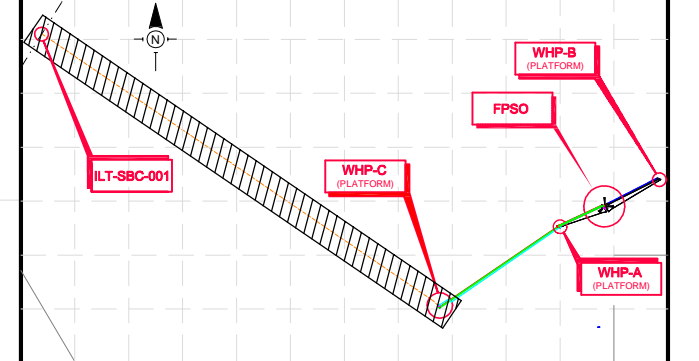
- WATER INJECTION [Symbol]
- RISER PRODUCTION (FLEXIBLE) [Symbol]
- RIGID PRODUCTION [Symbol]
- FIBRE OPTIC POWER [Symbol]

NEW INSTALLED:

- RIGID WATER INJECTION [Symbol]
- RISER PRODUCTION (FLEXIBLE) [Symbol]
- RIGID PRODUCTION [Symbol]
- FLEXIBLE WATER INJECTION [Symbol]
- FIBRE OPTIC POWER [Symbol]
- GAS IMPORT PIPELINE [Symbol]
- GAS IMPORT FLEXIBLE JUMPER [Symbol]
- SSIV UMBILICAL [Symbol]

REVIEW INDICATION [Symbol]

KEY PLANT



TechnipFMC PROJECT No: S56003 SHEET: 4 OF 4
TechnipFMC DRAWING No: S56003-000-DW-5705-007 REV: 2

REV.	DATE	REASON FOR ISSUE	PREPARED	DO CHK	ENL CHK	APPROVED
03	19/04/2018	ISSUED FOR REVIEW / WHERE INDICATED	RGO	CFE	EGA	BRO
02	19/02/2018	ISSUED FOR REVIEW / WHERE INDICATED	RGO	CFE	AMA	BRO
01	21/12/2017	FIRST ISSUE	RGO	CFE	AMA	BRO

PROJECT NAME: PEREGRINO II SURF

DRAWING TITLE: PEREGRINO II - FIELD LAYOUT

Scale: AT A1 4503562828 U00 32

Scale Size: PO No. AREA SYSTEM PROJ. No. DRAWING NUMBER REV.

Statoil logo