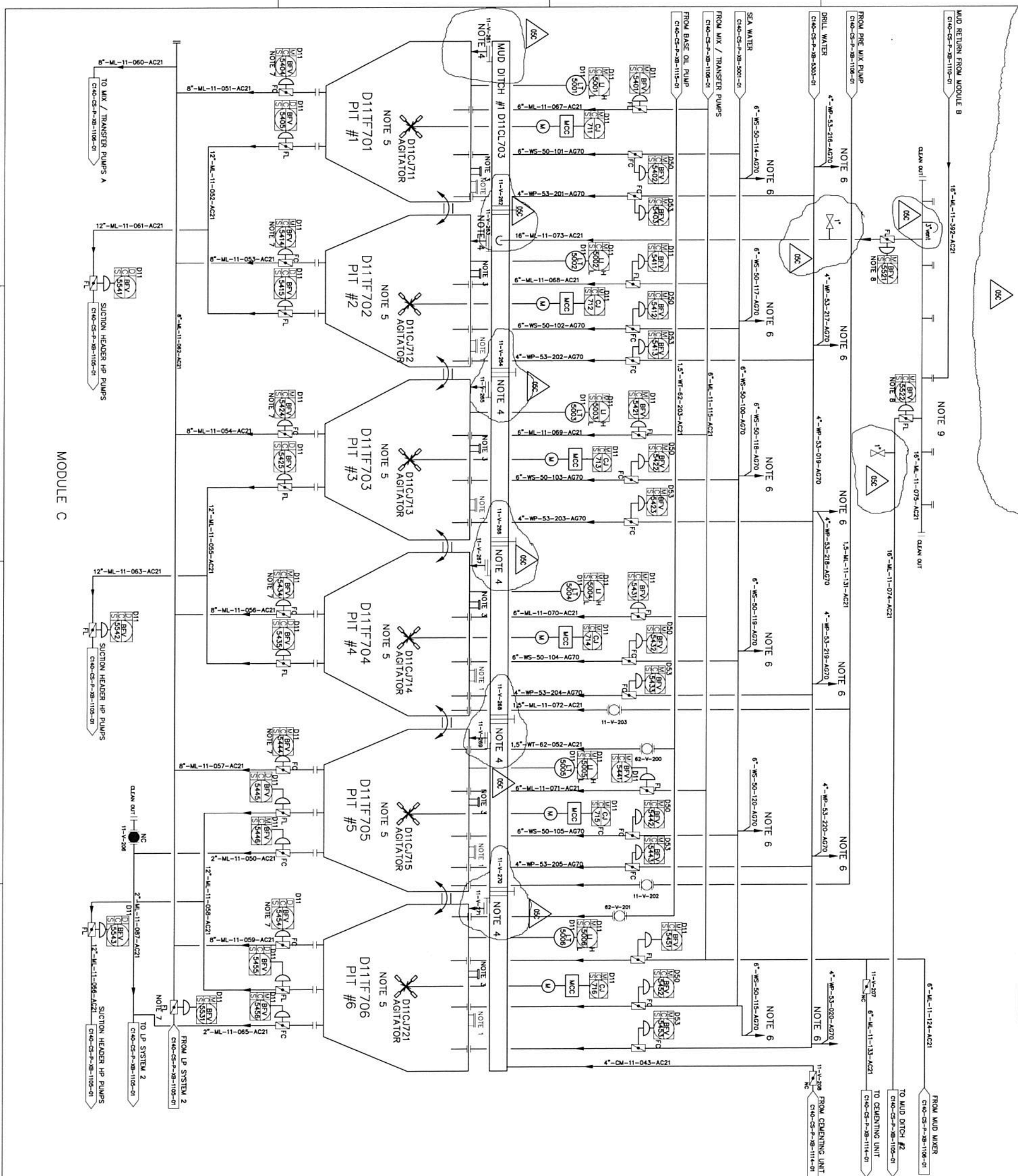


1 TAG NO.	D11TF701	D11TF702	D11TF703	D11TF704	D11TF705	D11TF706	D11CJ711	D11CJ712	D11CJ713	D11CJ714	D11CJ715	D11CJ721	D11CJ703
2 SERVICE	PIT 1	PIT 2	PIT 3	PIT 4	PIT 5	PIT 6	AGITATOR	AGITATOR	AGITATOR	AGITATOR	AGITATOR	AGITATOR	MUD DITCH #1
3 DESIGN/OP PRES	ATM/ATM	ATM/ATM	ATM/ATM	ATM/ATM	ATM/ATM	ATM/ATM	NA	NA	NA	NA	NA	NA	NA
4 DESIGN/OP TEMP	10C TO 45C	10C TO 45C	10C TO 45C	10C TO 45C	10C TO 45C	10C TO 45C	NA	NA	NA	NA	NA	NA	NA
5 CAPACITY	34.89 m ³	34.89 m ³	34.89 m ³	34.89 m ³	34.89 m ³	34.89 m ³	NA	NA	NA	NA	NA	NA	NA
6 DENSITY (kg/m ³)	2000	2000	2000	2000	2000	2000	NA	NA	NA	NA	NA	NA	NA
7 SHAFT POWER (KW)	NA	NA	NA	NA	NA	NA	12.7	12.7	12.7	12.7	12.7	4.8	NA
8 VENDOR	W-SWACO	W-SWACO	W-SWACO	W-SWACO	W-SWACO	W-SWACO	W-SWACO	W-SWACO	W-SWACO	W-SWACO	W-SWACO	W-SWACO	W-SWACO



REFERENCE DRAWINGS

C140-CS-P-XB-1105-01
C140-CS-P-XB-1106-01
C140-CS-P-XB-1110-01
C140-CS-P-XB-1115-01
C140-MU-P-XB-1001-02
C140-CS-P-XB-5001-01
C140-CS-P-XB-5303-01
C140-CS-P-XB-1114-01

- NOTES
1. MAIN WAY TO BE EQUIPPED WITH HAND GRIP AND LADDER
 2. ONE SET OF BLIND SPADES SUPPLIED FOR BLIND OF PIPES TO TANKS.
 3. HATCH FOR PORTABLE TANK CLEANING MACHINE
 4. SQUARE GATE VALVE
 5. AGITATOR SHALL STOP WHEN LEVEL IN TANK REACH THE LOWER AGITATOR BLADES.
 6. THE PIPE CONTINUE IN P&ID C140-CS-P-XB-1105-01
 7. MAY BE RESERVED BY DCS IN CONNECTION WITH FILLING FROM ACTIVE MUD PIT TO TRIP TANKS
 8. ONLY ONE VALVE CAN BE OPEN AT THE SAME TIME
 9. FLEX SPOOL CONNECTION PENDING ON MODULE LOCATION

OSK	RE ISSUED FOR CONSTRUCTION	BVE	ARS	KKL	26.01.2018
OAC	RE ISSUED FOR CONSTRUCTION	BVE	ARS	KKL	20.09.2017
O3C	RE ISSUED FOR CONSTRUCTION	BVE	ARS	KKL	21.11.2016
O2C	RE ISSUED FOR CONSTRUCTION	BVE	AND	KKL	20.09.2016
O1C	ISSUED FOR CONSTRUCTION	BVE	AND	KKL	04.07.2016

DRAWING N CODE: C140-CS-P-XB-1104-01
 DRAWING N DATE: 26-09-2018
 DRAWING N CODE: 25-035-P&ID-4-XK-005
 DRAWING N DATE: 04-07-2016

FORMATE: SCALE: PAGE: 1

LP_MUD_SYSTEM_1

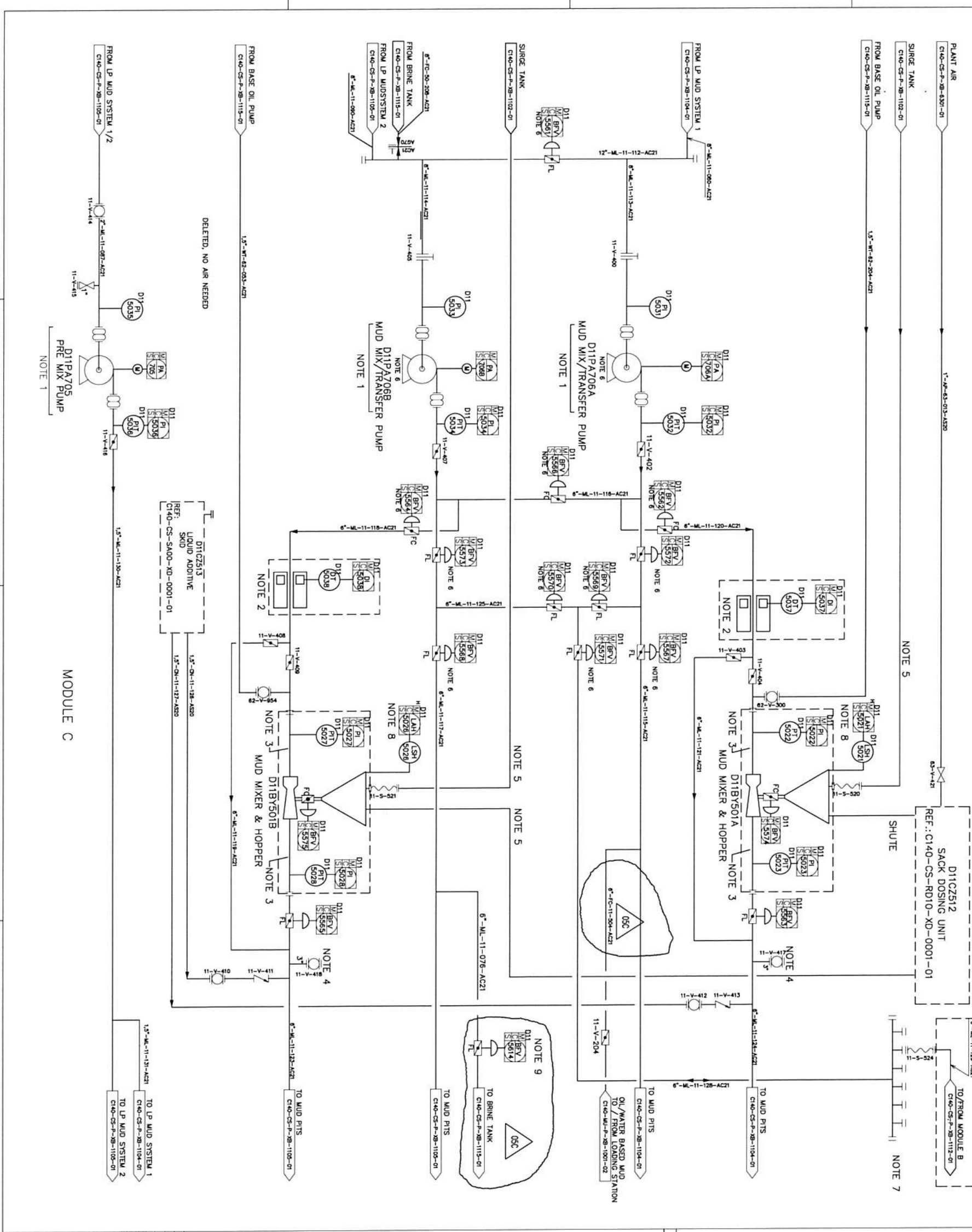
1	TAG NO.	D11PA706A	D11PA706B	D11PA705	D11BY501A	D11BY501B	D11CZ513	D11CZ512
2	SERVICE	Mudmix pump	Mudmix pump	Pre mix pump	Mudmix & Hopper	Mudmix & Hopper	Liquid Additive Skid Stock Dosing Unit	D11CZ512
3	DESIGN/OP PRESS (bar)	6.75	6.75	1.92	10-45	10-45	6	0-40
4	DESIGN/OP TEMP (C)	10-45	10-45	10-45	10-45	10-45	0.1 - 2.0	1.5
5	CAPACITY (m ³ /h)	280	280	34	2000	2000	NA	NA
6	DENSITY (kg/m ³)	81.9	81.9	200	NA	NA	NA	NA
7	SHAFT POWER (KW)	200	200	3.79	NA	NA	NA	NA
8	FLOW (m ³ /hr)	1750	1750	30	NA	NA	NA	NA
9	SPEED (RPM)	1750	1750	1750	NA	NA	NA	NA
10	HEAD (m)	40.2	40.2	12.4	NA	NA	NA	NA
11	EFFICIENCY (%)	53.81	53.81	53	NA	NA	NA	NA
12	IMPELLER (INCH)	12	12	7	NA	NA	NA	NA
13	VENDOR	MI-SWACO	MI-SWACO	MI-SWACO	CAMERON	CAMERON	CAMERON	CAMERON

C140-CS-P-2B-1102-01
 C140-CS-P-2B-1104-01
 C140-CS-P-2B-1105-01
 C140-CS-P-2B-1112-01
 C140-CS-P-2B-6301-01
 C140-CS-P-2B-6301-01

REFERENCE DRAWINGS

NOTES

1. COUPLING
2. TO BE INSTALLED IN A VERTICAL PIPE RUN
3. STRAIGHT PIPE BEFORE AND AFTER HOPPER, EXPOSURE PIPE DIA
4. CONNECTION FOR LIQUID CAUSTIC SOGA
5. FABRICATED ITEM (REF: C140-CS-R000-XD-0001-01)
6. MAY BE RESERVED BY OCS IN CONNECTION WITH FILLING FROM ACTIVE MUD PIT TO TRIP TANKS
7. FLEXIBLE SPOOL
8. IF LSH021 AND LSH028 IS ACTIVATED, CELL FEEDER D11C0505 AND D11C0506 STORES, VALUES D11B5017A AND D11B5017B, CLOSE SOU D11CZ512 STORES.
9. B.V. 5614 AND B.V.5615 SHALL CLOSE IF U 5088 REACHES LEVEL ALARM HL.



REV	DATE	BY	CHK	DESCRIPTION
05C	26.01.2018	ASA	KKL	ISSUED FOR CONSTRUCTION
04C	20.09.2017	ASA	KKL	ISSUED FOR CONSTRUCTION
03C	08.02.2017	ASA	KKL	ISSUED FOR CONSTRUCTION
02C	20.09.2015	ASA	KKL	ISSUED FOR CONSTRUCTION
01C	04.07.2015	ASA	KKL	ISSUED FOR CONSTRUCTION

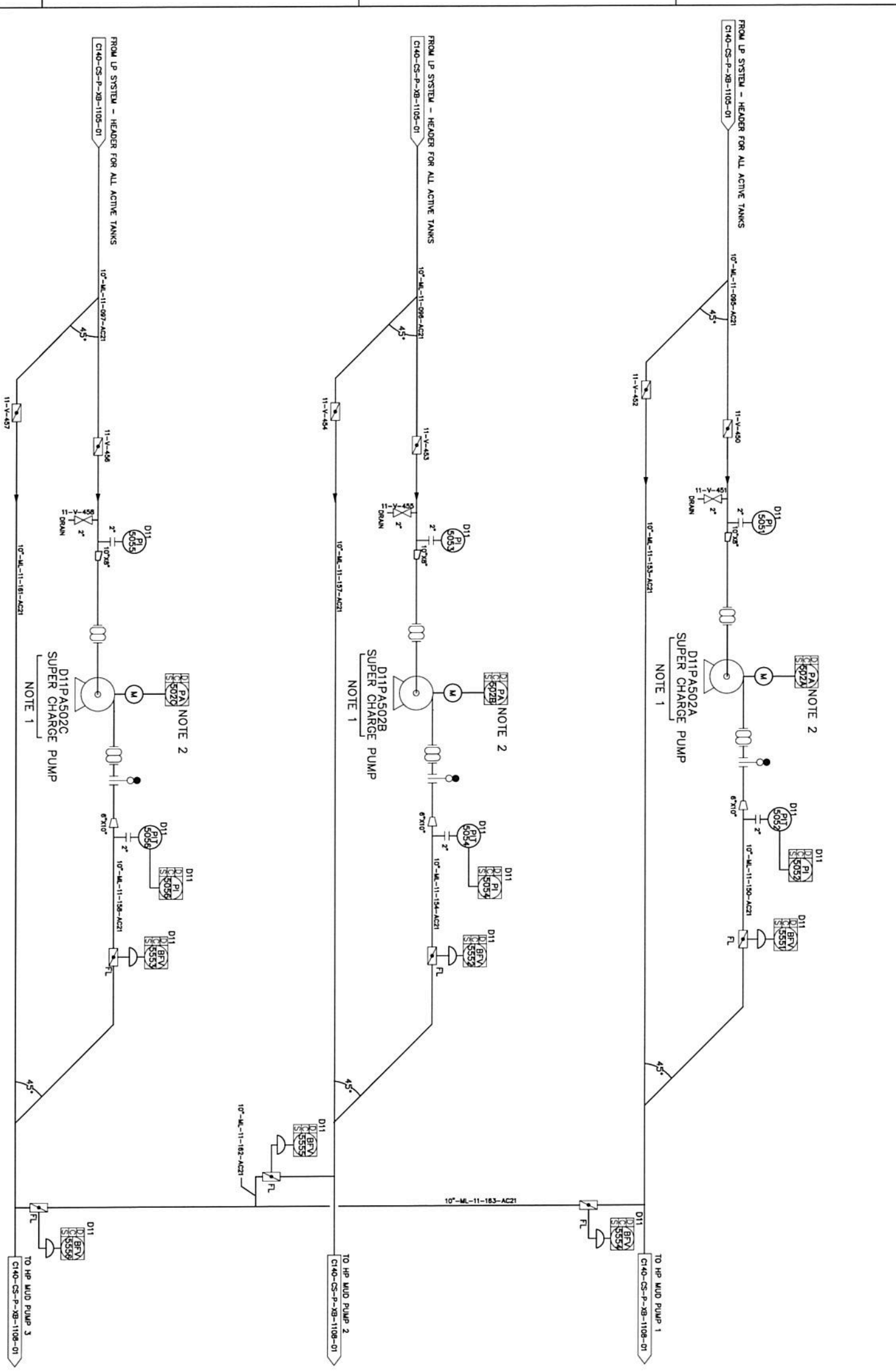


DRAWING N°: C140-CS-P-2B-1106-01
 DRAWING N°: 25-035-PA01-A-XK-009
 SCALE: 1:1
 PAGE: 04

MODULE C

LP_MUD_MIXING & TRANSFER_SYSTEM

TAG NO.	DESCRIPTION	UNIT	VALUE
1	Supreme 2500 Supercharge LP Mud Pump	Supreme 2500 Supercharge LP Mud Pump	
2	Supreme 2500 Supercharge LP Mud Pump	Supreme 2500 Supercharge LP Mud Pump	
3	Supreme 2500 Supercharge LP Mud Pump	Supreme 2500 Supercharge LP Mud Pump	
4	Supreme 2500 Supercharge LP Mud Pump	Supreme 2500 Supercharge LP Mud Pump	
5	Supreme 2500 Supercharge LP Mud Pump	Supreme 2500 Supercharge LP Mud Pump	
6	Supreme 2500 Supercharge LP Mud Pump	Supreme 2500 Supercharge LP Mud Pump	
7	Supreme 2500 Supercharge LP Mud Pump	Supreme 2500 Supercharge LP Mud Pump	
8	Supreme 2500 Supercharge LP Mud Pump	Supreme 2500 Supercharge LP Mud Pump	



MODULE E1

KEY PLAN

REFERENCE DRAWINGS

C140-CS-P-XB-1105-01
C140-CS-P-XB-1108-01

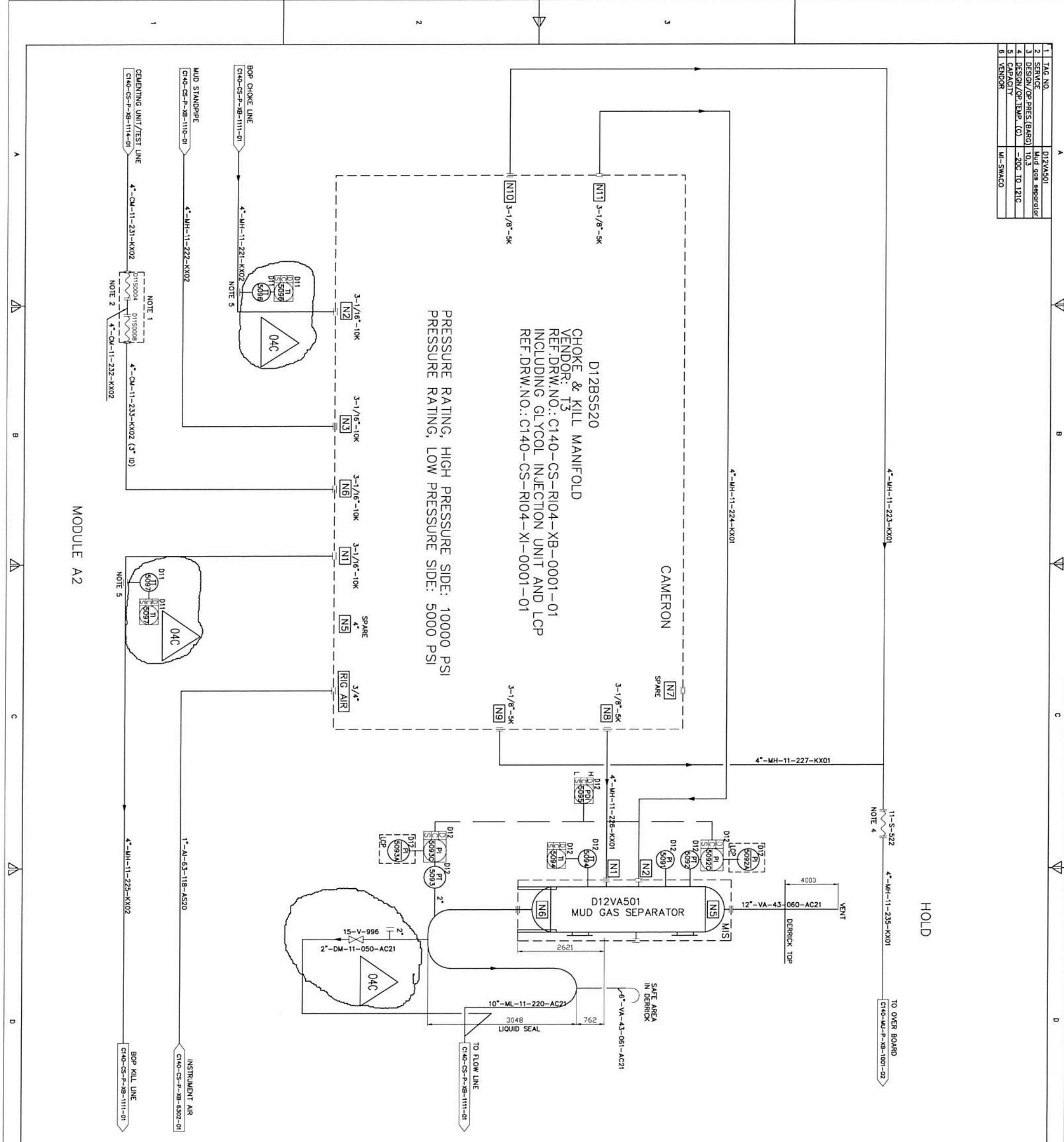
COMPLEMENTARY DRAWINGS

NOTES

1. COAMING
2. SUPER CHARGE PUMP SHALL START AUTOMATICALLY BY HP MUD PUMP

		CAMERON A Schneider Corporation	
ISSUED FOR CONSTRUCTION		BVE	ASA
21.11.2016		KKL	KKL
DRAWING N° STATOIL C140-CS-P-XB-1107-01 OIC			
DRAWING N° CONTRACTOR 25-035-PA01-A-XK-010			
MUD SUPER CHARGE PUMPS			
SCALE:	SCALE:	SCALE:	SCALE:

1	TAG NO.	D12VA501
2	SERVICE	Mud gas separator
3	DESIGN/OP PRES. (BAR)	10.3
4	DESIGN/OP TEMP. (C)	-20C TO 121C
5	CAPACITY	
6	VENDOR	MI-SMAGO



CHOKE & KILL MANIFOLD
 D12BSS20
 VENDOR: T3
 REF. DRW. NO.: C140-CS-R104-XB-0001-01
 INCLUDING GLYCOL INJECTION UNIT AND LCP
 REF. DRW. NO.: C140-CS-R104-XI-0001-01

PRESSURE RATING, HIGH PRESSURE SIDE: 10000 PSI
 PRESSURE RATING, LOW PRESSURE SIDE: 5000 PSI

HOLD

REFERENCE DRAWINGS

- C140-CS-P-XB-0001-01
- C140-CS-P-XB-1110-01
- C140-CS-P-XB-1111-01
- C140-MU-P-XB-1001-02
- C140-CS-P-XB-6302-01
- C140-CS-P-XB-6504-01
- C140-CS-P-XB-1114-01
- C140-CS-R104-XI-0001-01
- C140-CS-R104-XB-0001-01

COMPLEMENTARY DRAWINGS

NOTES

1. DRAG CHAIN, SEE DRW. NO. C140-CS-P-XB-0001-01
2. HAMMERLUG UNION ON HOSE CONNECTIONS.
3. DELETED
4. HP HOSE 10 000 PSI HAMMERLUG UNION 1502 END CONNECTION O14 HOSE FEMALE 4"
5. CLAMP ON TEMPERATURE TRANSMITTER

04C	RE-ISSUED FOR CONSTRUCTION	BVE	ASA	KKL	26.01.2018
03C	RE-ISSUED FOR CONSTRUCTION	BVE	ASA	KKL	20.09.2017
02C	RE-ISSUED FOR CONSTRUCTION	BVE	ASA	KKL	01.02.2017
01C	ISSUED FOR CONSTRUCTION	BVE	ASA	KKL	23.11.2016

DRAWING N° 104C		DRAWING N° 104C	
C140-CS-P-XB-1109-01		C140-CS-P-XB-1109-01	
South Atlantic Holding B.V.		South Atlantic Holding B.V.	
DRAWING N° 104C		DRAWING N° 104C	
C140-CS-P-XB-1109-01		C140-CS-P-XB-1109-01	
South Atlantic Holding B.V.		South Atlantic Holding B.V.	

REVISIONS
 25-035-PA01-A-XK-014 03
 25-035-PA01-A-XK-014 03

SCALE
 SCALE

HP MANIFOLDS DWG. 1

REFERENCE DRAWINGS

- C140-CS-P-XB-0001-01
- C140-CS-P-XB-1108-01
- C140-CS-P-XB-1109-01
- C140-CS-P-XB-1111-01
- C140-CS-P-XB-1114-01
- C140-CS-R111-XB-0001-01
- C140-CS-R121-XB-0001-01

COMPLEMENTARY DRAWINGS

NOTES

1. DRAG CHAIN/SEE DRW. NO. C140-CS-P-XB-0001-01
2. HAMMERFLUG UNION ON HOSE CONNECTIONS.
3. HAMMERFLUG UNION ON REMOVABLE SPOOL. NORMALLY NOT CONNECTED
4. ID 5" 30m HIGH ABOVE DRILL FLOOR
5. ID 3" 12m HIGH ABOVE DRILL FLOOR

CAMERON
A Schlumberger Company

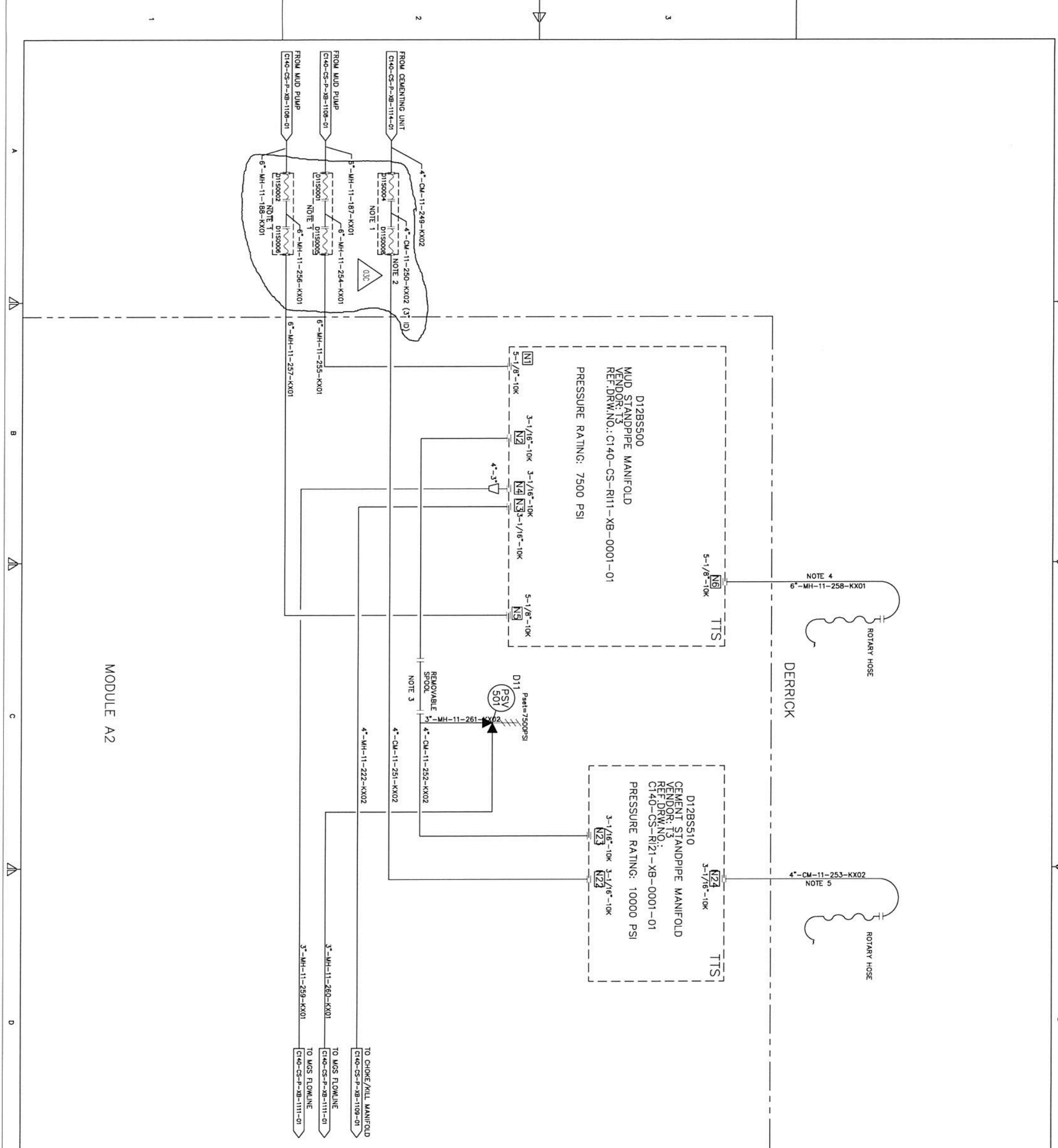
South Atlantic Holding B.V.
C140-CS-P-XB-1110-01

REV.	DATE	BY	CHKD	DESCRIPTION
03C	20.09.2017	ASA	KKL	RE-ISSUED FOR CONSTRUCTION
02C	01.02.2017	ASA	KKL	RE-ISSUED FOR CONSTRUCTION
01C	23.11.2016	ASA	KKL	ISSUED FOR CONSTRUCTION

DRAWING N° 31A10L
C140-CS-P-XB-1110-01

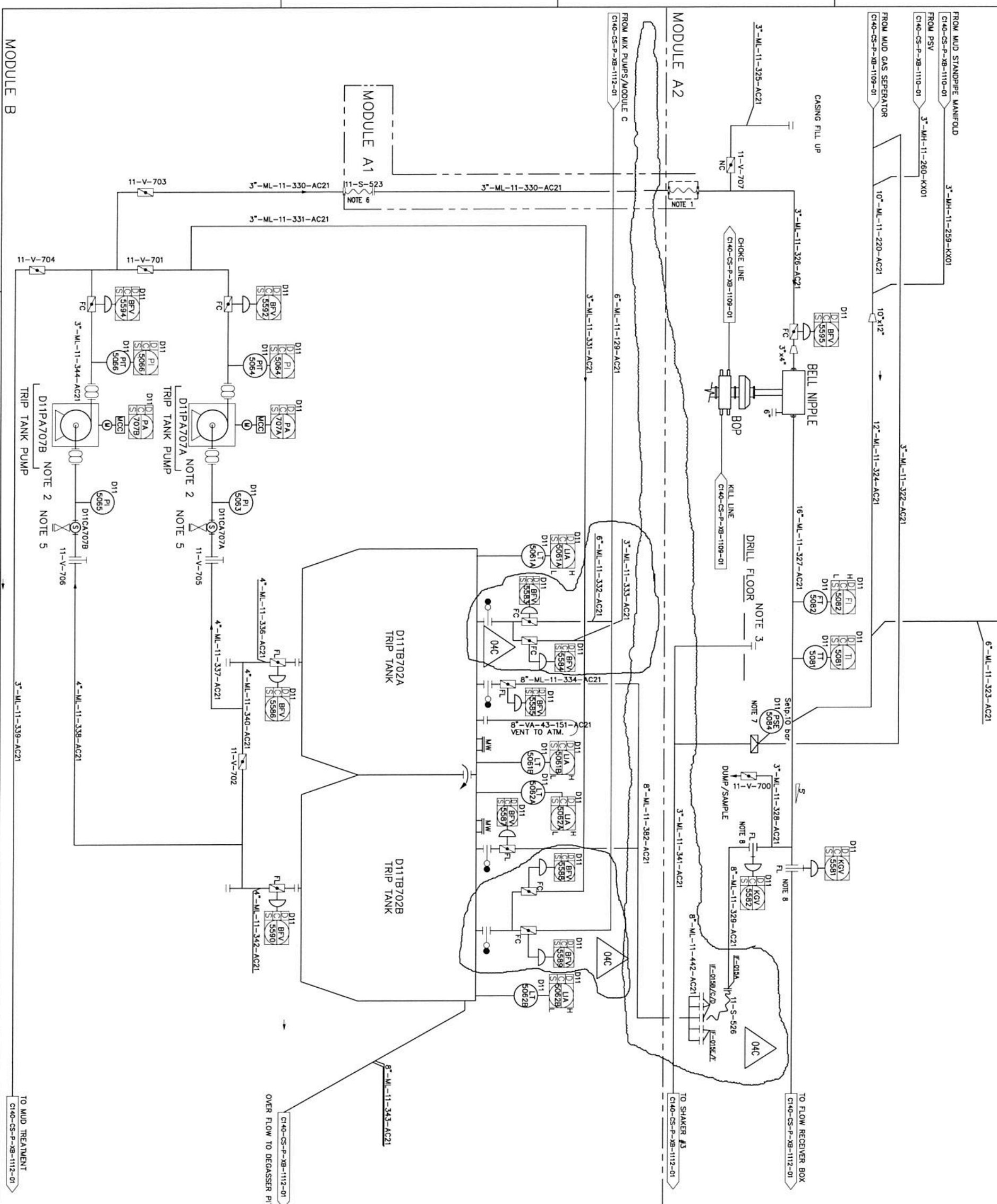
03C

REVISIONS / EDC / 11/17/17 P&ID
P&ID, HP MANIFOLDS, DRAW. 2



MODULE A2

1	2	3	4	5	6	7	8	9	10	11
TAG NO.	D11B702A	D11B702B	D11B702A	D11B702B	D11B702A	D11B702B	D11B702A	D11B702B	D11B702A	D11B702B
DESIGN/OP PRES.	Tripartek	Tripartek	Tripartek	Tripartek	Tripartek	Tripartek	Tripartek	Tripartek	Tripartek	Tripartek
DESIGN/OP TEMP.	NA	10C TO 45C	10C TO 45C	10C TO 45C	10C TO 45C	10C TO 45C	10C TO 45C	10C TO 45C	10C TO 45C	10C TO 45C
CAPACITY	NA	10.25 m ³	10.25 m ³	10.25 m ³	10.25 m ³	10.25 m ³	10.25 m ³	10.25 m ³	10.25 m ³	10.25 m ³
DENSITY (kg/m ³)	NA	2000	2000	2000	2000	2000	2000	2000	2000	2000
SHAFT POWER (KW)	NA	23.8	23.8	23.8	23.8	23.8	23.8	23.8	23.8	23.8
FLOW (m ³ /hr)	NA	90	90	90	90	90	90	90	90	90
HEAD (m)	NA	30.9	30.9	30.9	30.9	30.9	30.9	30.9	30.9	30.9
HEAD (ft)	NA	100	100	100	100	100	100	100	100	100
VENDOR	MI-SWACO	MI-SWACO	MI-SWACO	MI-SWACO	MI-SWACO	MI-SWACO	MI-SWACO	MI-SWACO	MI-SWACO	MI-SWACO



1	2	3	4	5	6	7	8	9	10	11
CONNECTION FROM MUD BUCKET	6" BAUER CONNECTION	DRILL FLOOR	DRILL FLOOR	DRILL FLOOR	DRILL FLOOR	DRILL FLOOR	DRILL FLOOR	DRILL FLOOR	DRILL FLOOR	DRILL FLOOR
TO FLOW RECEIVER BOX	TO SHAKER #3	TO MUD TREATMENT	TO MUD TREATMENT	TO MUD TREATMENT	TO MUD TREATMENT	TO MUD TREATMENT	TO MUD TREATMENT	TO MUD TREATMENT	TO MUD TREATMENT	TO MUD TREATMENT

KEY PLAN										
1	2	3	4	5	6	7	8	9	10	11

REFERENCE DRAWINGS
C140-CS-P-XB-1109-01
C140-CS-P-XB-1110-01
C140-CS-P-XB-1112-01

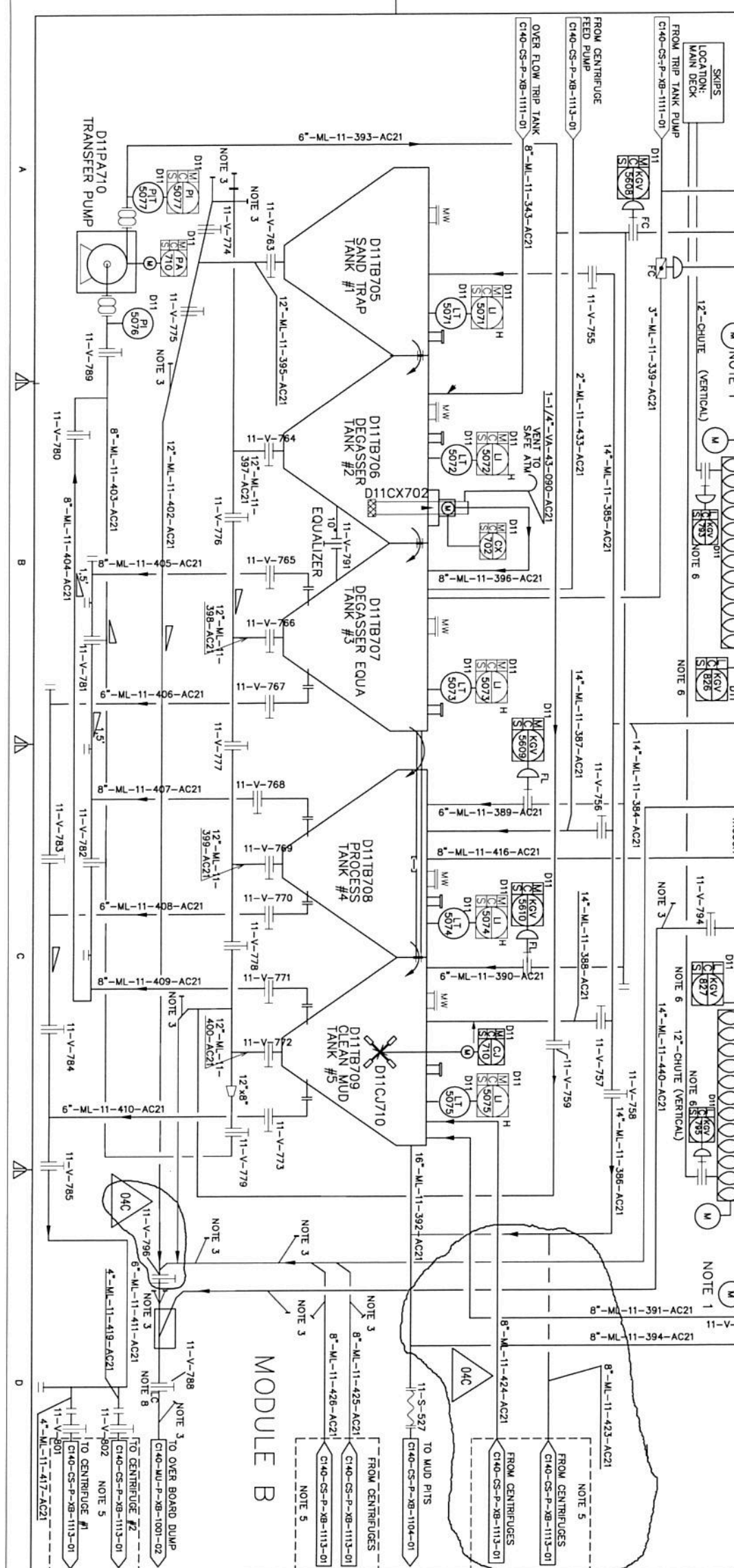
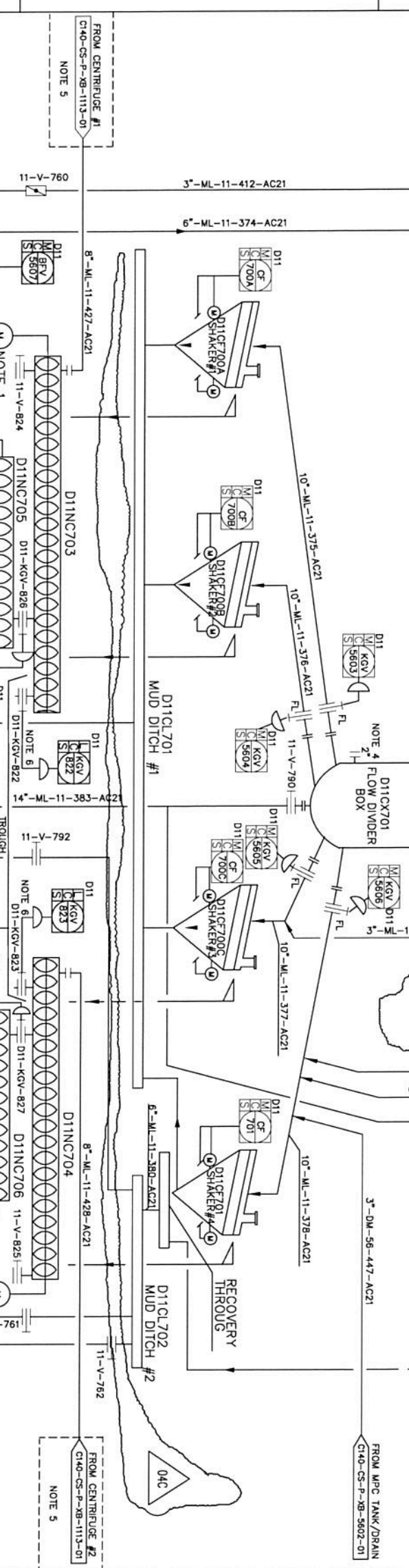
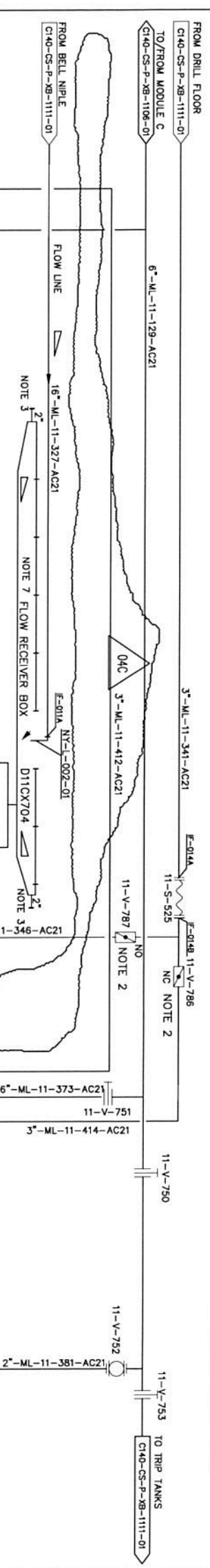
COMPLEMENTARY DRAWINGS

NOTES
1. DRAG CHAIN, SEE DRW. NO. C140-CS-P-XB-0001-01
2. COAMING
3. CONNECTION POINT FOR REVERSE CIRCULATION, FIG. 1502 FEMALE
4. DELETED
5. STRAINER INCL. DRAIN VALVE
6. FLEXIBLE BETWEEN MODULE A1 AND B
7. RUPTURE DISC INCLUDES LIMITSWITCH, IS NOT CONNECTED, BUT CAN BE CONNECTED TO DRILLING CONTROL SYSTEM.
8. VALVES D11-KGV-5581 / 5582 INTERLOC IN CONTROL SYSTEM.

REVISIONS	DATE	BY	CHKD	APP'D
04C	26.01.2018	ASA	KKL	
03C	20.09.2017	ASA	KKL	
02C	08.02.2017	ASA	KKL	
01C	23.11.2016	ASA	KKL	

PROJECT	DRAWING NO.	SCALE
MUD SYSTEM, TRIP TANK PUMPS	C140-CS-P-XB-1111-01-04C	SCALE

1	2	3	4	5	6	7	8	9
TAG NO.	D11C701	D11C702	D11C703	D11C704	D11C705	D11C706	D11C707	D11C708
SERVICE	Flow Divider Box	Shide Shaker	Shide Shaker	Shide Shaker	Shide Shaker	Shide Shaker	Shide Shaker	Shide Shaker
DESIGN/OP. PRES.	NA	ATM.	ATM.	ATM.	ATM.	ATM.	ATM.	ATM.
DESIGN/OP. TEMP.	NA	NA	NA	NA	NA	NA	NA	NA
CAPACITY	2400 gpm	750 gpm	750 gpm	750 gpm	750 gpm	750 gpm	750 gpm	750 gpm
DENSITY (kg/m ³)	2000	2000	2000	2000	2000	2000	2000	2000
FLOW (lit./min)	2839	2839	2839	2839	2839	2839	2839	2839
SHAFT POWER (KW)	5.6	5.6	5.6	5.6	5.6	5.6	5.6	5.6
VENDOR	MI-SWACO	MI-SWACO	MI-SWACO	MI-SWACO	MI-SWACO	MI-SWACO	MI-SWACO	MI-SWACO



1	2	3	4	5	6	7	8	9
REV.	04C	04C	04C	04C	04C	04C	04C	04C
DATE	26.01.2018	20.09.2017	20.09.2017	13.12.2016				
BY	ASA	ASA	ASA	ASA				
CHECKED	BVE	BVE	BVE	BVE				
ISSUED	ASA	ASA	ASA	ASA				

COMPLEMENTARY DRAWINGS

REFERENCE DRAWINGS

C140-CS-P-XB-1104-01
 C140-CS-P-XB-1106-01
 C140-CS-P-XB-1111-01
 C140-CS-P-XB-1113-01
 C140-MU-P-XB-1001-02
 C140-CS-P-XB-5001-01

NOTES

- MOTOR WITH TWO WAY ROTATION
- VALVES TO BE INSTALLED CLOSE TO EACH OTHER FOR MECHANICAL INTERLOCK WHEN DOING REVERSED OPERATION
- SEAWATER FLUSHING CONNECTIONS (REF. C140-CS-P-XB-5001-01)
- GAS SENSING EQUIPMENT (MUD LOGGING)
- FUTURE EQUIPMENT
- PNEUMATIC VALVE, REMOTE OPERATED FROM LOCAL CONTROL STAND.
- FLOW RECEIVER BOX WITH HATCHES FOR OPENING FOR FLOW-LINE.
- VALVE TO BE MANUAL LOCKED IN CLOSE POSITION.

KEY PLAN

MODULE B

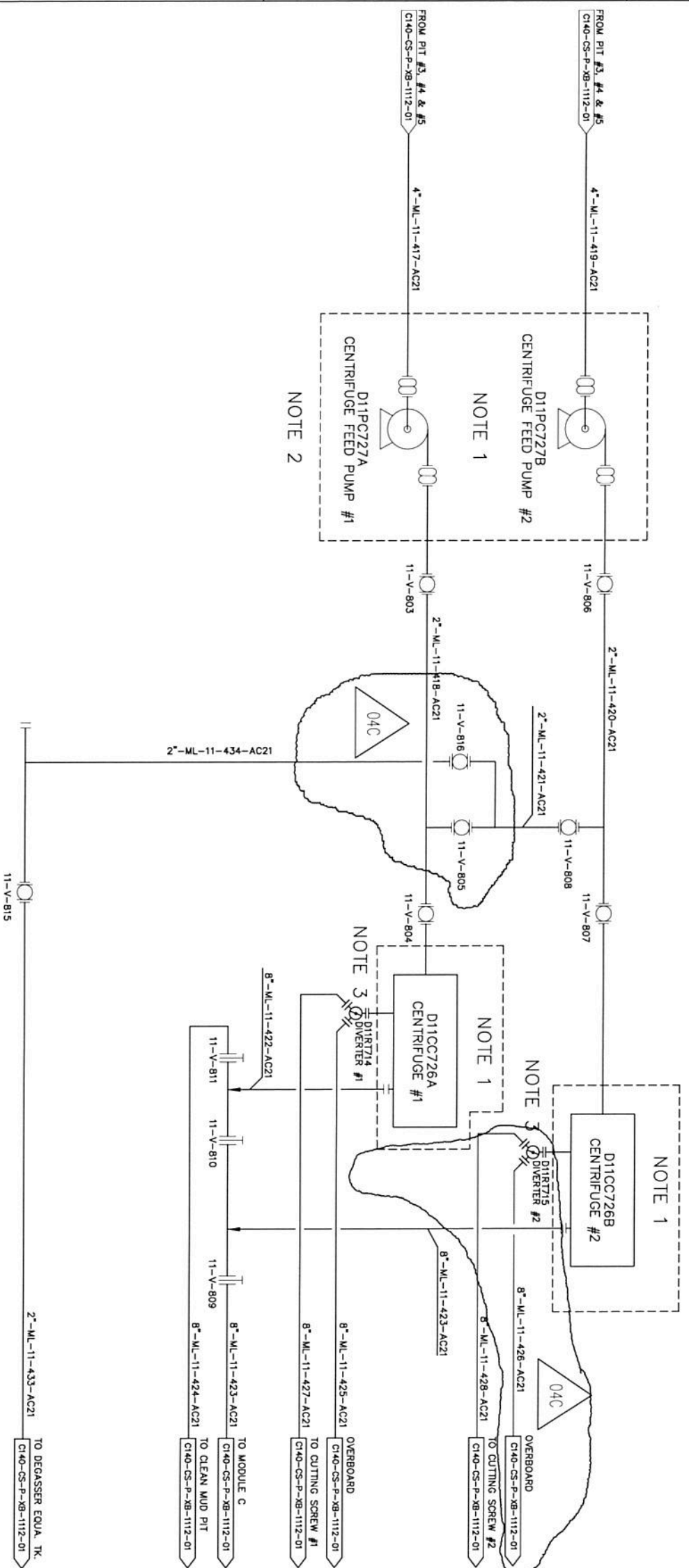
MODULE A

MODULE C

MODULE D

MODULE E

TAG NO.	D11CC726A	D11CC726B	D11PC727A	D11PC727B	D11R714	D11R715
1	Centrifuge #1	Centrifuge #2	Centrifuge Feed Pump #1	Centrifuge Feed Pump #2	Diverter #1	Diverter #2
2	Service	Service	Service	Service	Service	Service
3	Design/Op Pres.	Design/Op Pres.	Design/Op Pres.	Design/Op Pres.	Design/Op Pres.	Design/Op Pres.
4	Design/Op Temp.	Design/Op Temp.	Design/Op Temp.	Design/Op Temp.	Design/Op Temp.	Design/Op Temp.
5	Capacity (Solids Disch)	Capacity (Solids Disch)	Capacity (Solids Disch)	Capacity (Solids Disch)	Capacity (Solids Disch)	Capacity (Solids Disch)
6	Density (kg/m ³)	Density (kg/m ³)	Density (kg/m ³)	Density (kg/m ³)	Density (kg/m ³)	Density (kg/m ³)
7	Flow (l/m ³)	Flow (l/m ³)	Flow (l/m ³)	Flow (l/m ³)	Flow (l/m ³)	Flow (l/m ³)
8	Shaft Power (kW)	Shaft Power (kW)	Shaft Power (kW)	Shaft Power (kW)	Shaft Power (kW)	Shaft Power (kW)
9	Process Fluid Op Temp	Process Fluid Op Temp	Process Fluid Op Temp	Process Fluid Op Temp	Process Fluid Op Temp	Process Fluid Op Temp
10						



REFERENCE DRAWINGS
C140-CS-P-XB-1112-01

COMPLEMENTARY DRAWINGS

NOTES

- EQUIPMENT DELIVERED BY CAMERON
- DISCHARGE OVERPRESSURE PROTECTION INTERNAL IN PUMP
- DIVERTER VALVE TO BE MECHANICAL LOCKED IN POSITION FOR FLOW TO CUTTING SCREW

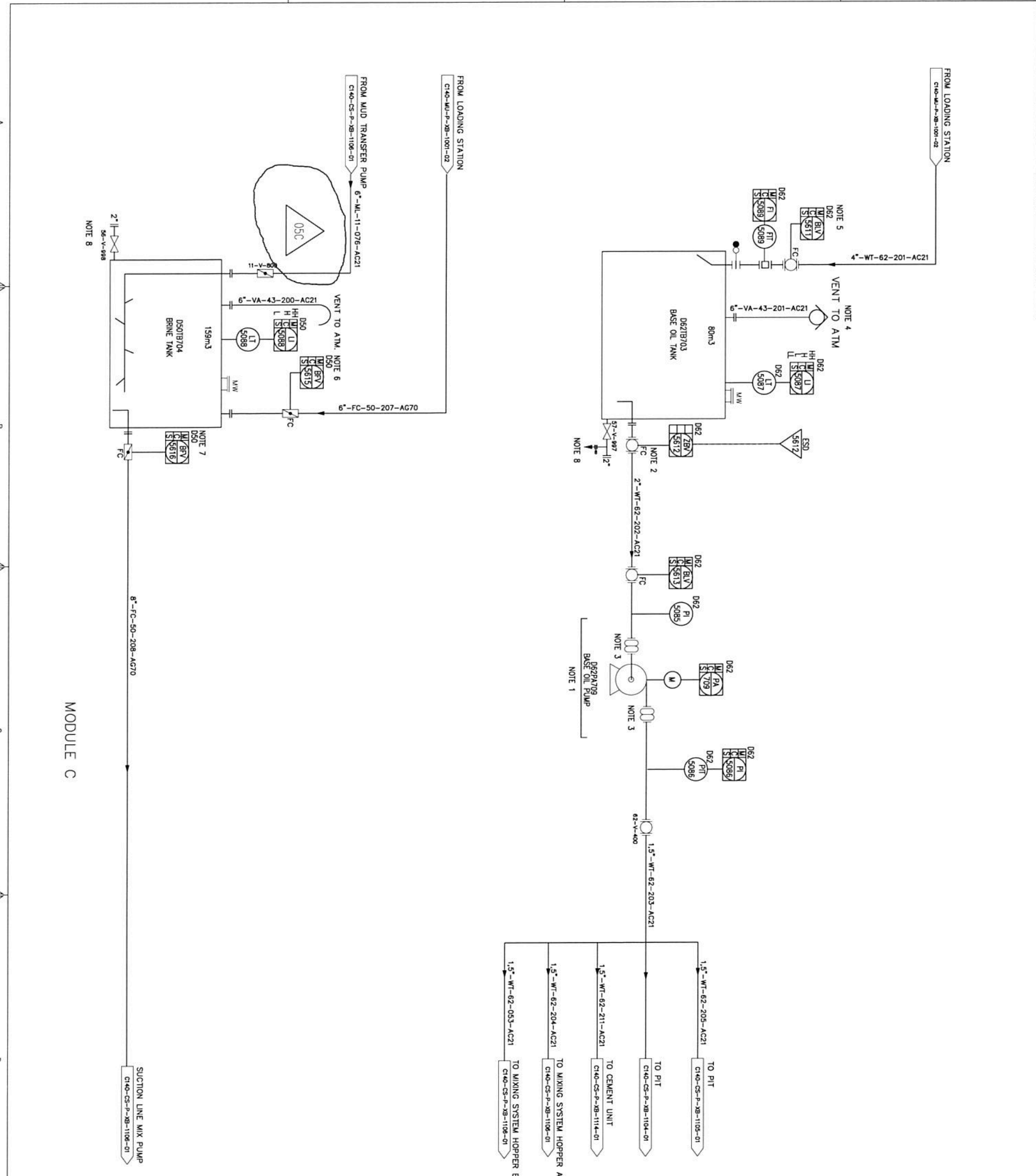
REV.	DESCRIPTION	DATE	BY	CHK
04C	RE-ISSUED FOR CONSTRUCTION	26.01.2018	ASA	KKL
03C	RE-ISSUED FOR CONSTRUCTION	20.09.2017	ASA	KKL
02C	RE-ISSUED FOR CONSTRUCTION	01.02.2017	ASA	KKL
01C	ISSUED FOR CONSTRUCTION	14.12.2016	ASA	KKL

CAMERON
A Schlumberger Company

South Atlantic Holding B.V.
C140-CS-P-XB-1113-01 04C

PROJECT: MUD TREATMENT SYSTEM, DRAW. 2
SCALE: AS SHOWN

TAG NO.	DESCRIPTION	UNIT	VALUE
1	DESIGN/OP PRES.	NA	1.92bar
2	DESIGN/OP TEMP.	10 TO 45 C	
3	CAPACITY	80 m ³	
4	DENSITY (kg/m ³)	1830	
5	FLOW (lit/min)	900	
6	SHAFT POWER (KW)	56716/Min	
7	VENDOR	MI-SWACO	



REFERENCE DRAWINGS

- C140-CS-P-XB-1104-01
- C140-CS-P-XB-1105-01
- C140-CS-P-XB-1106-01
- C140-CS-P-XB-1001-01
- C140-CS-P-XB-1112-01

- NOTES
1. COAMING
 2. VALVE NO ZBV5612 PROTECTED IN SUCH A WAY THAT IT CAN NOT BE DAMAGED
 3. FLEXIBLE TO BE FIRERATED
 4. FLAME ARRESTOR
 5. BY 5611 SHALL CLOSE IF U 5087 REACHES LEVEL ALARM HH
 7. MAY BE RESERVED BY DCS IN CONNECTION WITH FILLING FROM ACTIVE MUD PIT TO TRIP TANKS
 8. DRAIN FROM BRINE AND BASE OIL TANK TO BE DONE BY CONNECTING HOSE TO DRAIN-VALVE AND ROUTE THIS DOWN TO TOTE TANK ON MAIN DECK DRAIN-VOLUME FROM BRINE TANK IS 11.6 m³

NO.	DESCRIPTION	DATE	BY	CHK
05C	RE ISSUED FOR CONSTRUCTION	26.01.2018	BVE	ARS
04C	RE ISSUED FOR CONSTRUCTION	05.10.2017	BVE	ARS
03C	RE ISSUED FOR CONSTRUCTION	14.11.2016	BVE	ARS
02C	RE ISSUED FOR CONSTRUCTION	20.09.2016	BVE	ARS
01C	ISSUED FOR CONSTRUCTION	04.07.2016	BVE	ARS

CAMERON
A Schlumberger Company

Statoll

DRAWING N STATOLL
C140-CS-P-XB-1115-01

DRAWING N STATOLL
C140-CS-P-XB-1115-01

DRAWING N STATOLL
0E-WHP02-D200-PRO-TTS-1020 B

DRAWING N STATOLL
23-035-PA01-A-XK-021

FORMATT: SCALE PAGE

MODULE C