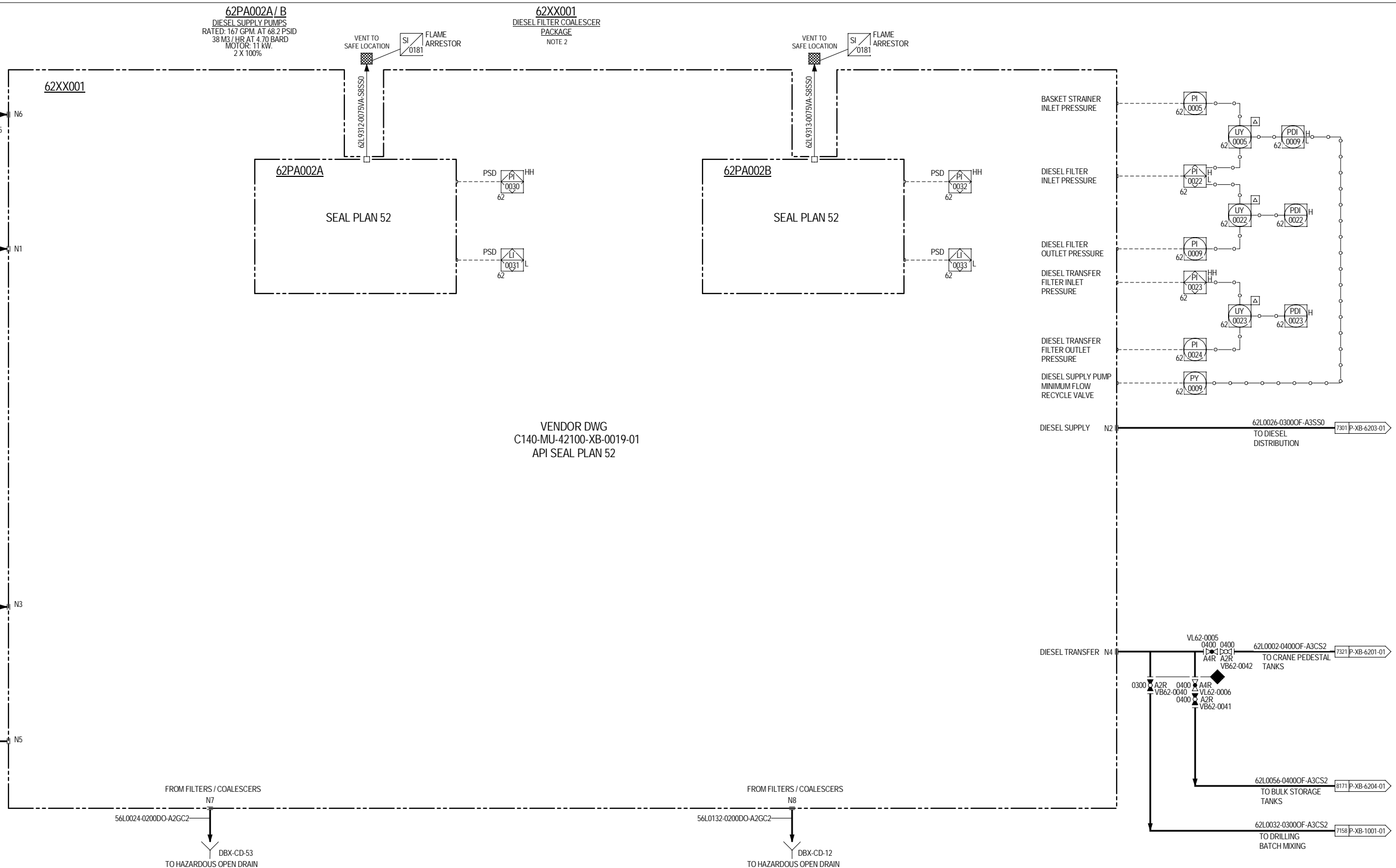


This document is the sole and exclusive property of Wood Group USA, including all patented and unpatented features and/or confidential information contained herein. Its use is conditioned upon the user's agreement not to: (i) reproduce the document, in whole or in part, for the material described therein; (ii) use the document for any purpose other than as specifically permitted in writing by Wood Group USA, or (iii) disclose or otherwise disseminate or allow any such disclosure or dissemination of this document or its contents to others except as specifically permitted in writing by Wood Group USA, or its affiliates.



VENDOR DWG
C140-MU-42100-XB-0019-01
API SEAL PLAN 52

- NOTES
- REFER TO P&ID DRAWINGS C140-MU-P-XB-0001-01 THROUGH C140-MU-P-XB-0008-01 FOR LEGEND AND SYMBOLS DETAILS.
 - THREE COALESCER ELEMENTS PROVIDED, 1 X 100% FOR TRANSFER DIESEL CLEAN-UP, 2 X 100% FOR SUPPLY DIESEL CLEAN-UP/POLISHING.
 - DELETED.
 - DELETED.

REV	DATE	BY	DESCRIPTION	CHK	ENGR	APPR	CLIENT	SCALE	NONE	DATE
08C	30 Jun 17	LB	ISSUED FOR CONSTRUCTION	RAK	ETS	EMF				
07	25 Apr 17	LB	ISSUED FOR DESIGN	RAK	ETS	EMF				
06	20 Feb 17	LB	RE-ISSUED FOR HAZOP	RAK	ETS	EMF				
05	12 Sep 16	LB	ISSUED FOR HAZOP	RAK	GLE	EMF				
04	19 Feb 16	LD	RE-ISSUED FOR DESIGN	MLH	RAK	EMF				
03	29 Oct 15	CMB	ISSUED FOR DESIGN	RAK	GLE	LSE				
02	03 Sep 15	RR	ISSUED FOR HAZOP	RAK	GLE	LSE				
01	31 Jul 15	LB	ISSUED FOR CLIENT REVIEW	RAK	GLE	LSE				
09C	05 Dec 17	LB	RE-ISSUED FOR CONSTRUCTION	ETS	RAK	EMF				

Kiewit WOOD GROUP USA, INC.

PROJECT NO: 106663
STATOIL PO#: 4503367243

DESIGNED BY:
DRAWN BY: C. BROWN
CHECKED BY:
APPROVED BY:

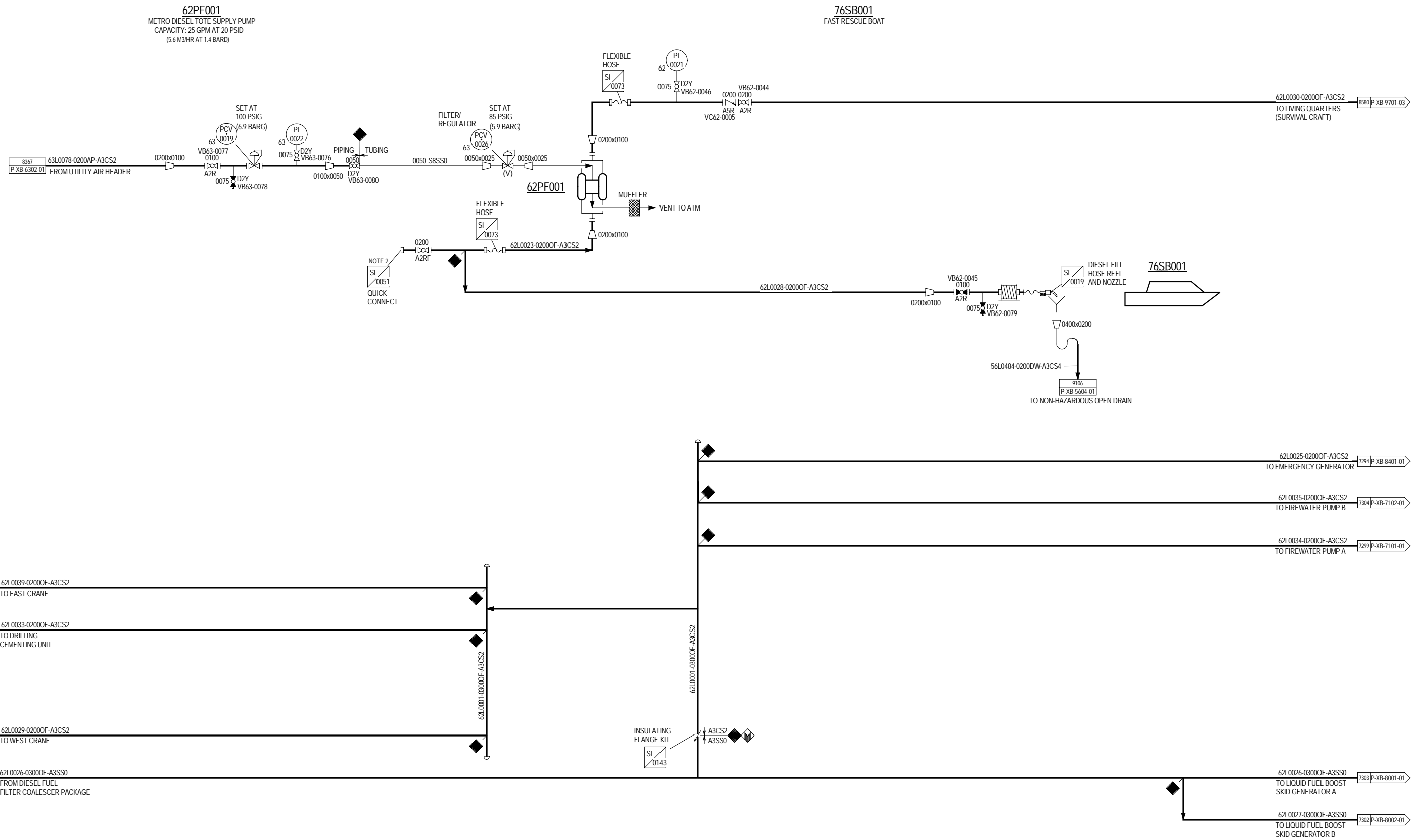
DATE: 04 Jun 15

SOUTH ATLANTIC HOLDING B.V.
PEREGRINO II

PIPING & INSTRUMENT DIAGRAM
DIESEL FUEL PUMPS AND FILTERS

DRAWING NO: C140-MU-P-XB-6202-01
REV: 10C

This document is the sole and exclusive property of Wood Group USA, including all patented and patentable features and/or confidential information contained herein. Its use is conditioned upon the user's agreement not to: (i) reproduce the document, in whole or in part, for the material described therein; (ii) use the document for any purpose other than as specifically permitted in writing by Wood Group USA; or (iii) disclose or otherwise disseminate or allow any such disclosure or dissemination of this document or its contents to others except as specifically permitted in writing by Wood Group USA. Wood Group USA as used herein refers to Wood Group USA, Inc. and its affiliates.



- NOTES
- REFER TO P&ID DRAWINGS C140-MU-P-XB-0001-01 THROUGH C140-MU-P-XB-0008-01 FOR LEGEND AND SYMBOLS DETAILS.
 - METROPOLITAN GRADE DIESEL TOTE AND PUMP LOCATED ON DRILL DECK IN CHEMICAL TOTE AREA.

REV	DATE	BY	DESCRIPTION	CHK	ENGR	APPR	CLIENT	SCALE	NONE	DATE
08C	05 Dec 17	LB	RE-ISSUED FOR CONSTRUCTION	ETS	RAK	EMF				
07C	25 Apr 17	LB	ISSUED FOR CONSTRUCTION	RAK	NT	EMF				
06	09 Jan 17	LB	ISSUED FOR DESIGN	RAK	GLE	EMF				
05	12 Sep 16	LB	ISSUED FOR HAZOP	RAK	GLE	EMF				
04	19 Feb 16	LD	RE-ISSUED FOR DESIGN	MLH	RAK	EMF				
03	29 Oct 15	CMB	ISSUED FOR DESIGN	RAK	GLE	LSE				
02	03 Sep 15	RR	ISSUED FOR HAZOP	RAK	GLE	LSE				
01	31 Jul 15	LD	ISSUED FOR CLIENT REVIEW	RAK	GLE	LSE				
A	06 Jul 15	LD	ISSUED FOR INTERNAL DESIGN	RAK	GLE	LSE				

Kiewit WOOD GROUP USA, INC.

PROJECT NO: 106663
 STATOIL PO#: 4503367243

DESIGNED BY:
 DRAWN BY: L.DOUGLASS
 02 Jun 15

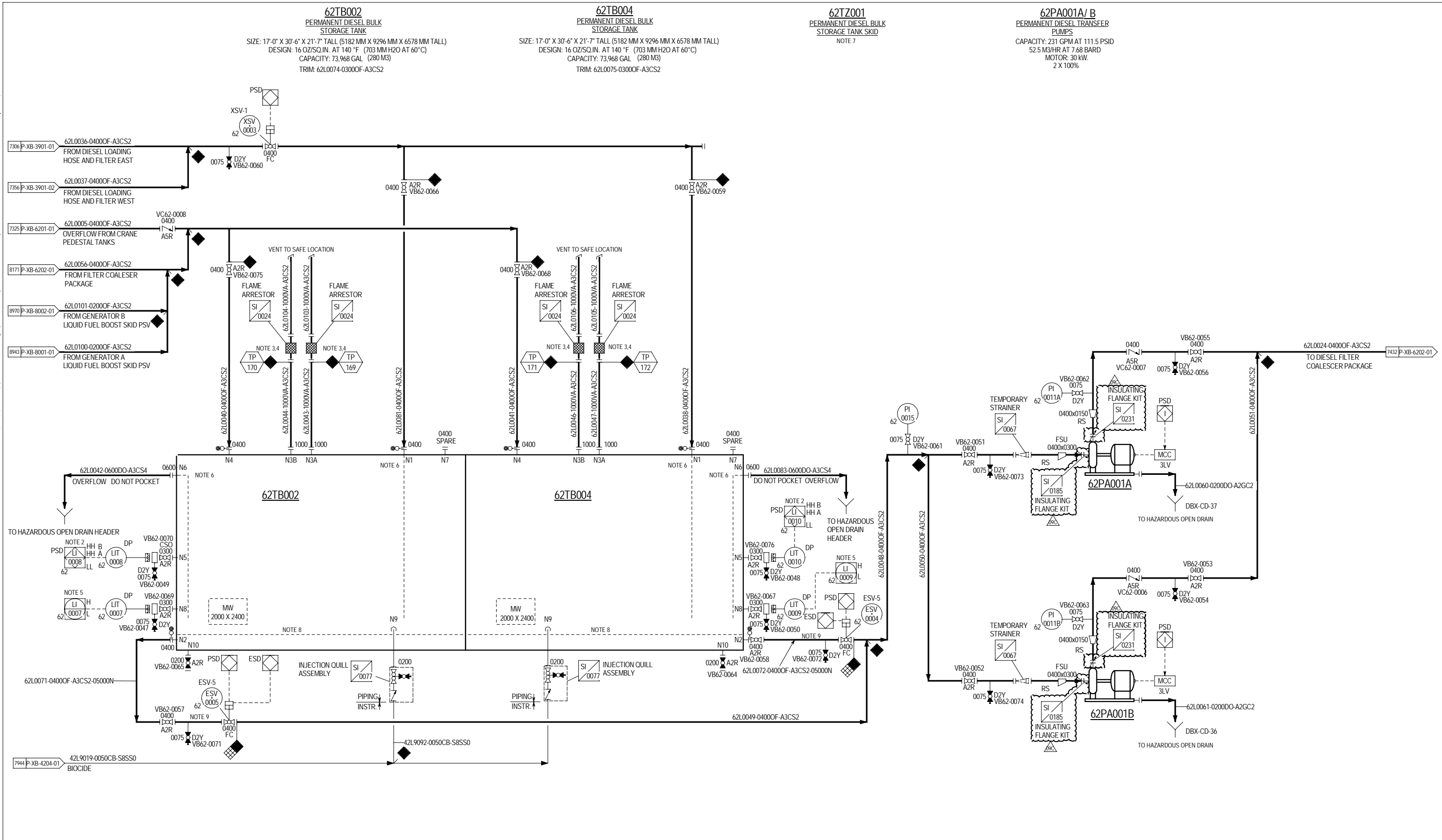
CHECKED BY:
 APPROVED BY:

SOUTH ATLANTIC HOLDING B.V.
 PEREGRINO II

PIPING & INSTRUMENT DIAGRAM
 DIESEL FUEL DISTRIBUTION

DRAWING NO: C140-MU-P-XB-6203-01
 REV: 09C

This document is the sole and exclusive property of Wood Group USA, including all patented and unpatented features, and/or confidential information contained herein. Its use is conditioned upon the user's agreement not to: (i) reproduce or in part, for the material described therein; (ii) use the document for any purpose other than as specifically permitted in writing by Wood Group USA, or (iii) disclose or otherwise disseminate or allow any such disclosure or dissemination of this document or its contents to others except as specifically permitted in writing by Wood Group USA, or its affiliates.



NOTES

- REFER TO P&ID DRAWINGS C140-MU-P-XB-0001-01 THROUGH C140-MU-P-XB-0008-01 FOR LEGEND AND SYMBOLS DETAILS.
- HHA CLOSES LOADING VALVE 62XSV003 AND STOPS ALL PERMANENT AND TEMPORARY DIESEL TRANSFER PUMPS. HHB STOPS DIESEL SUPPLY PUMPS.
- FLAME ARRESTOR TO BE ACCESSIBLE AND TO BE SEVERAL FEET ABOVE OVERFLOW LINE.
- 2 X 100% FLAME ARRESTORES AND VENTS.
- DIESEL STORAGE TANK HIGH LEVEL SIGNAL TO INITIATE COMMON HORNS AT EAST/WEST PLATFORM HOSE LOADING STATIONS (P&ID: P-XB-3901-01/02).
- 0.5 INCH HOLE SIPHON BREAK.
- SKID CONTAINS BOTH TANKS 62TB002 AND 62TB004.
- TANK BOTTOM IS SLOPED TO LOW POINT DRAIN.

9. PASSIVE FIRE PROTECTION INSULATION TO BE PROVIDED FOR PIPING BETWEEN DIESEL TANK FLANGE AND ESV UPSTREAM FLANGE. PROTECTION FOR ESV VALVE WILL BE BY H-60 RATED BLANKET.

PERMANENT DIESEL TANK LEVEL SETTINGS (MM)

6337	TOP OF TANK
6175	LSHHB
5975	LSHHA
5775	LAH
1075	LAL
875	LSLL
0	INSIDE BOV

REV	DATE	BY	DESCRIPTION	CHK	ENGR	APPR	CLIENT
08C	05 Dec 17	LB	RE-ISSUED FOR CONSTRUCTION	ETS	RAK	EMF	
07C	25 Apr 17	LB	ISSUED FOR CONSTRUCTION	RAK	NT	EMF	
06	09 Jan 17	LB	ISSUED FOR DESIGN	RAK	GLE	EMF	
05	12 Sep 16	LB	ISSUED FOR HAZOP	RAK	GLE	EMF	
04	19 Feb 16	LD	RE-ISSUED FOR DESIGN	MLH	RAK	EMF	
03	29 Oct 15	CMB	ISSUED FOR DESIGN	RAK	GLE	LSE	
02	03 Sep 15	RR	ISSUED FOR HAZOP	RAK	GLE	LSE	
01	31 Jul 15	LD	ISSUED FOR CLIENT REVIEW	RAK	GLE	LSE	
A	06 Jul 15	RR	ISSUED FOR INTERNAL REVIEW	RAK	GLE	LSE	

Kiewit WOOD GROUP USA, INC.

PROJECT NO: 106663
 STATOIL PO#: 4503367243

DESIGNED BY:
 DRAWN BY: C. BROWN
 CHECKED BY:
 APPROVED BY:

SCALE: NONE
 DATE: 05 Jun 15

SOUTH ATLANTIC HOLDING B.V.
 PEREGRINO II

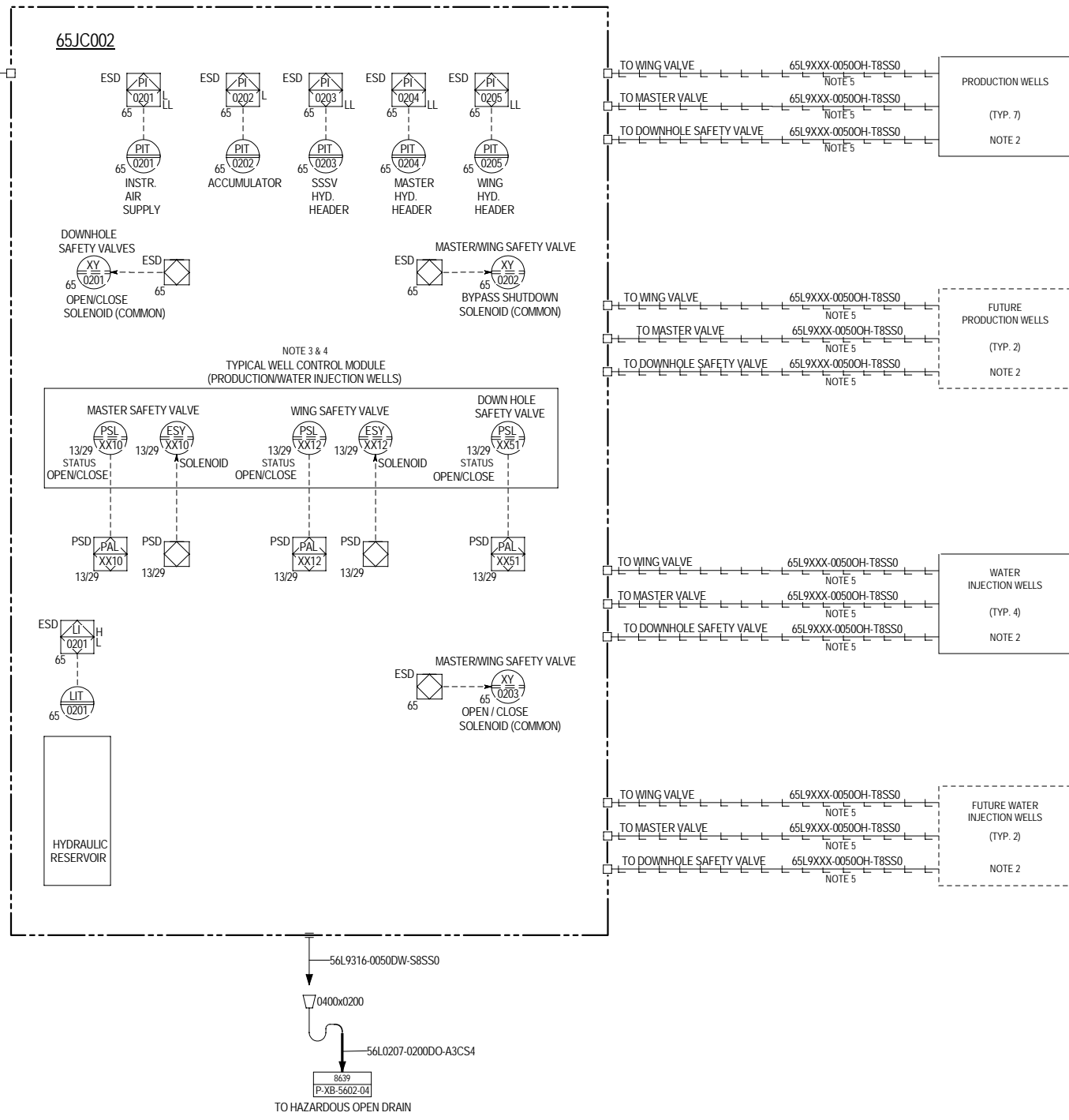
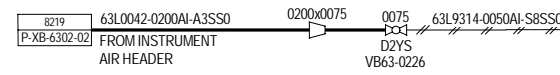
PIPING & INSTRUMENT DIAGRAM
 DIESEL STORAGE TANKS AND PUMPS

DRAWING NO: C140-MU-P-XB-6204-01
 REV: 09C

65JC002
WELLHEAD
CONTROL PANEL EAST

13W0XX
PRODUCTION WELLHEADS

29W0XX
WATER INJECTION WELLHEADS
NOTE 3



This document is the sole and exclusive property of Wood Group USA, including all patented and patentable features and/or confidential information contained herein. Its use is conditioned upon the user's agreement not to: (i) reproduce the document, in whole or in part, for the material described therein; (ii) use the document for any purpose other than as specifically permitted in writing by Wood Group USA; or (iii) disclose or otherwise disseminate or allow any such disclosure or dissemination of this document or its contents to others except as specifically permitted in writing by Wood Group USA. Wood Group USA as used herein refers to Wood Group USA, Inc. and its affiliates.

- NOTES
- REFER TO P&ID DRAWINGS C140-MU-P-XB-0001-01 THROUGH C140-MU-P-XB-0008-01 FOR LEGEND AND SYMBOLS DETAILS.
 - FOR WELLHEAD TUBING DETAILS SEE P&IDS C140-MU-P-XB-1301-0102 AND 2904-0102.
 - REFER TO P&ID C140-MU-P-XB-6501-03 FOR INITIAL SPECIFIC DESIGNATIONS OF NUMBERED WELLHEADS ASSIGNED TO EAST OR WEST PANEL LOCATIONS, AND REMOTE SHUTDOWN ASSOCIATED INSTRUMENTATION.
 - WELL CONTROL PACKAGE INFORMATION IS PRELIMINARY, AND TO BE VERIFIED, CONFIRMED AND UPDATED LATER DURING DETAIL DESIGN PHASE.
 - REFERENCE INSTRUMENT TUBE SCHEDULE C140-MU-J-LA-0013 FOR TUBE NUMBERS.

REV	DATE	BY	DESCRIPTION	CHK	ENGR	APPR	CLIENT	SCALE:	NONE	DATE
08C	05 Dec 17	LB	RE-ISSUED FOR CONSTRUCTION	ETS	RAK	EMF				
07C	25 Apr 17	LB	ISSUED FOR CONSTRUCTION	RAK	ETS	EMF				
06	09 Jan 17	LB	ISSUED FOR DESIGN	RAK	ETS	EMF				
05	12 Sep 16	LB	ISSUED FOR HAZOP	RAK	ETS	EMF				
04	19 Feb 16	LD	RE-ISSUED FOR DESIGN	MLH	RAK	EMF				
03	29 Oct 15	CMB	ISSUED FOR DESIGN	RAK	ETS	LSE				
02	03 Sep 15	CMB	ISSUED FOR HAZOP	RAK	KDF	LSE				
01	31 Jul 15	LD	ISSUED FOR CLIENT REVIEW	RAK	KDF	LSE				
A	06 Jul 15	RR	ISSUED FOR INTERNAL REVIEW	RAK	KDF	LSE				
APPROVED BY:										
SCALE:								NONE		
DATE:										



SOUTH ATLANTIC HOLDING B.V.
PEREGRINO II

PIPING & INSTRUMENT DIAGRAM
EAST HYDRAULIC CONTROL PANEL

DRAWING NO: C140-MU-P-XB-6501-01 REV: 09C