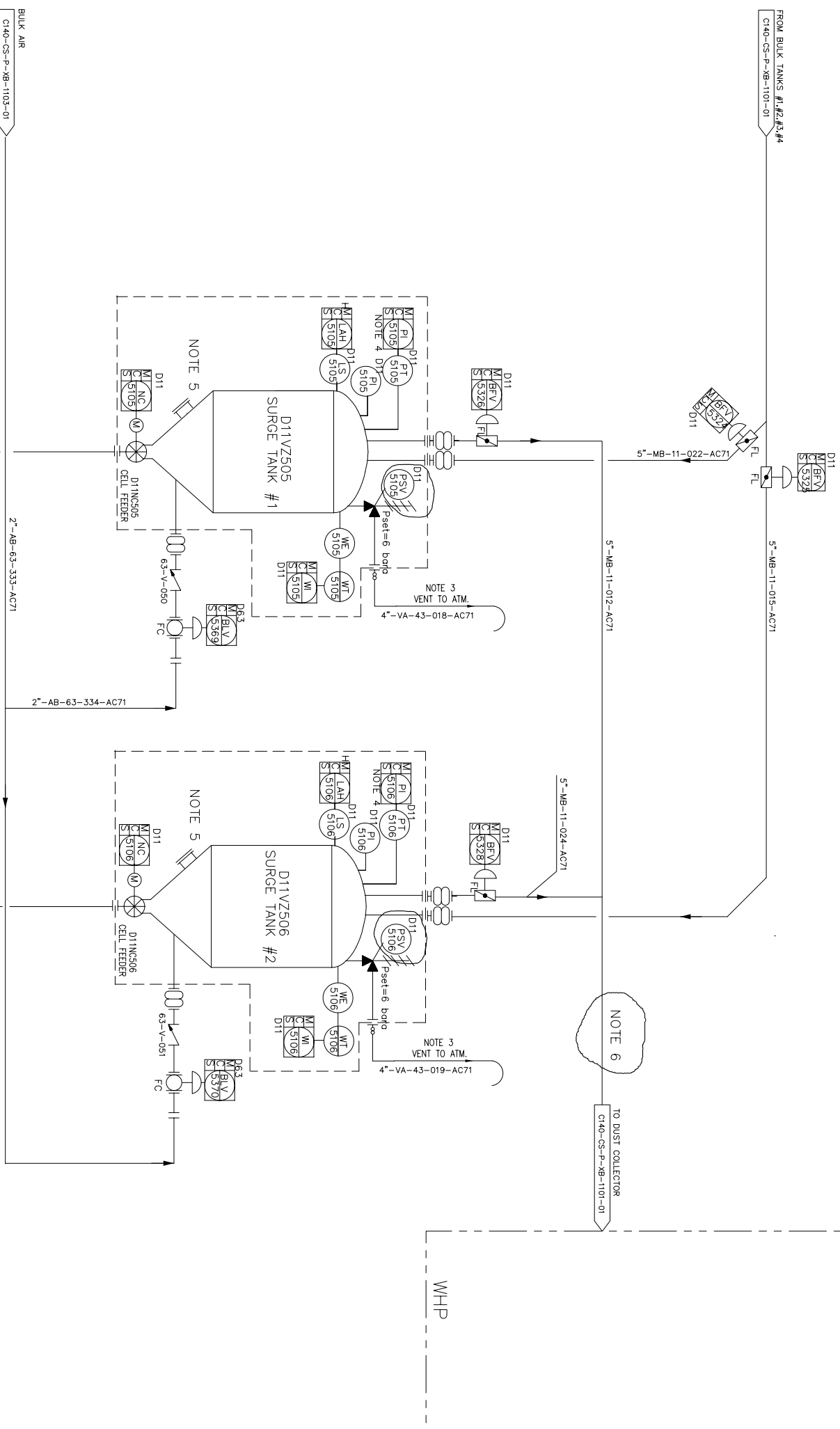


1	TAG NO.	D11VZ505	D11VZ506
2	SERVICE	SURGE TANK	SURGE TANK
3	DESIGN/SP-PRES. (BARG)	6 / 5.5	6 / 5.5
4	DESIGN/SP-TEMP. (C)	-20 +40/AMB	-20 +40/AMB
5	CAPACITY (m3)	4m3 operating	4m3 operating
6	VOLUME (m3)	4	4
7	VENDOR	CAMERON	CAMERON
8	CAPACITY CELL FEEDER	5-32 TON/H	5-32 TON/H



REFERENCE DRAWINGS
 C140-CS-P-XB-1101-01
 C140-CS-P-XB-1103-01
 C140-CS-P-XB-1106-01

NOTES

1. NDS OF PURGE CONNECTION TO BE DETERMINED TO BULK PIPE ROUTING
2. FABRICATED ITEM. (REF C140-CS-RD00-XB-0001-01)
3. ROUTED TO SAFE AREA/OUTSIDE MODULE C
4. ALARM FOR PT5105 & PT5106 SHALL BE SET LOWER THAN SET-P-PSV
5. INSPECTION HATCH (20")
6. LINE 5"-MB-11-012-AC71 DELIVERED BY DPU

NOTE 2 TO MUD MIXER & HOPPER B
 C140-CS-P-XB-1106-01

NOTE 2 TO MUD MIXER & HOPPER A
 C140-CS-P-XB-1106-01

DATE	REVISED FOR CONSTRUCTION	BY	AND	KKL	20.09.2016
DATE	ISSUED FOR CONSTRUCTION	BY	AND	KKL	04.07.2016
REV	DESCRIPTION	BY	DATE	APPROV	DATE



PEREGRINO II
 DPU_P&ID
 BULK_BARITE_STORAGE_&_TRANSFER

DRAWING N. OSK
 C140-CS-P-XB-1102-01

DRAWING N. OSK
 DE-MHP02-0200-PRO-TTS-1001 5

DRAWING N. CAMERON
 ZS-035-PA01-A-XK-002 01

REV. DATE

FORMAT: SCALE: PAGE: 1/1

MODULE C

A

B

C

D

E

1

2

3

9

A

B

C

D

E