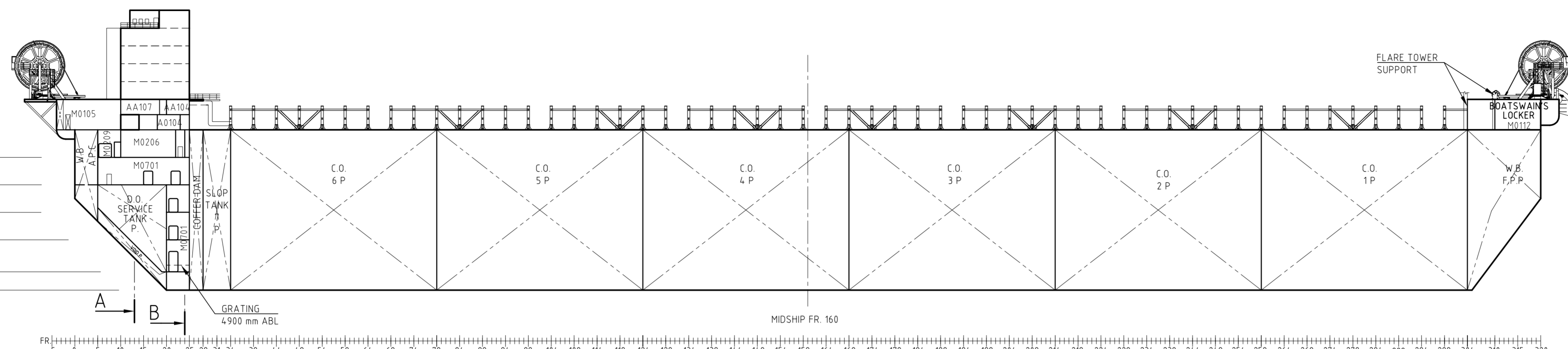
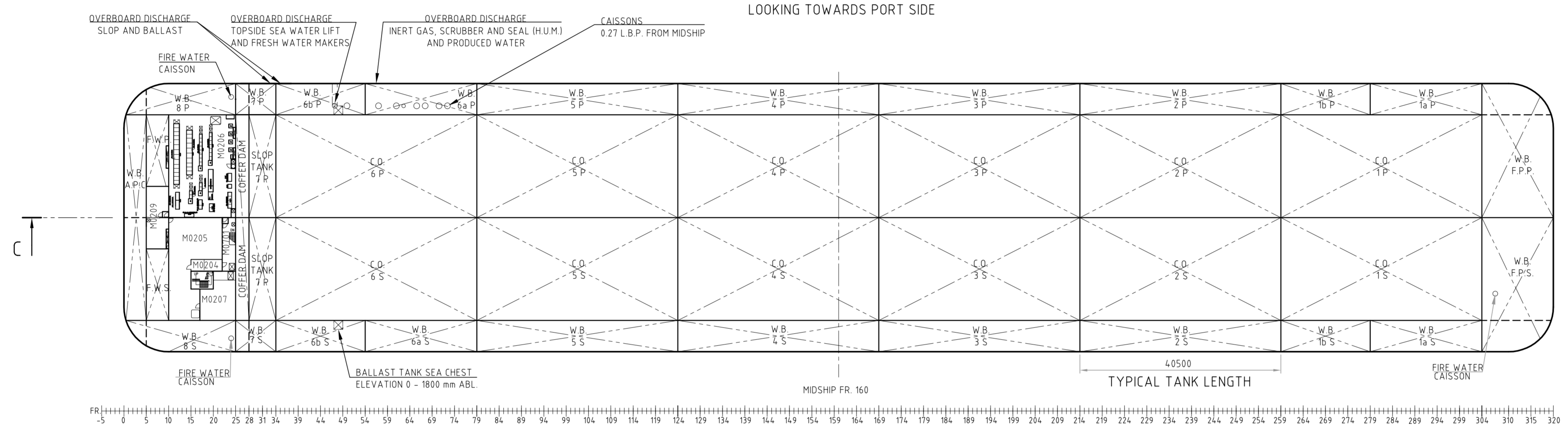


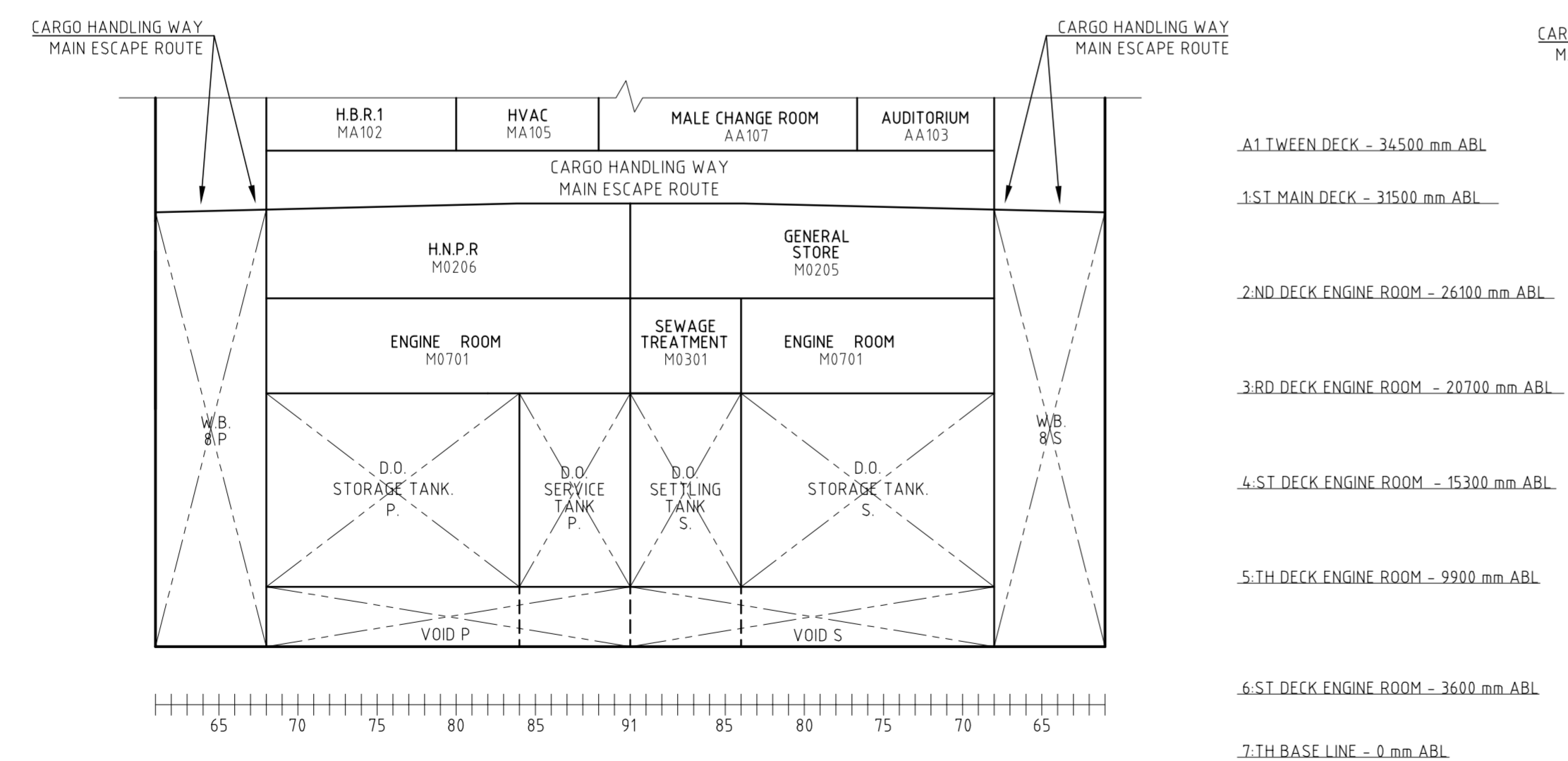
- TOP HULL DECK - 55500 mm ABL
- A7 TOP OF DECK HOUSE - 55000 mm ABL
- A6 4th ACC. DECK - 51500 mm ABL
- A5 3rd ACC. DECK - 48000 mm ABL
- A4 2nd ACC. DECK - 44500 mm ABL
- A3 1st ACC. DECK - 41000 mm ABL
- A2 POOP DECK - 37500 mm ABL
- A1 TWEEN DECK - 34500 mm ABL
- 1ST MAIN DECK - 31500 mm ABL
- 2ND DECK ENGINE ROOM - 26100 mm ABL
- 3RD DECK ENGINE ROOM - 20700 mm ABL
- 4TH DECK ENGINE ROOM - 15300 mm ABL
- 5TH DECK ENGINE ROOM - 9900 mm ABL
- 6TH DECK ENGINE ROOM - 3600 mm ABL
- 7TH BASE LINE - 0 mm ABL



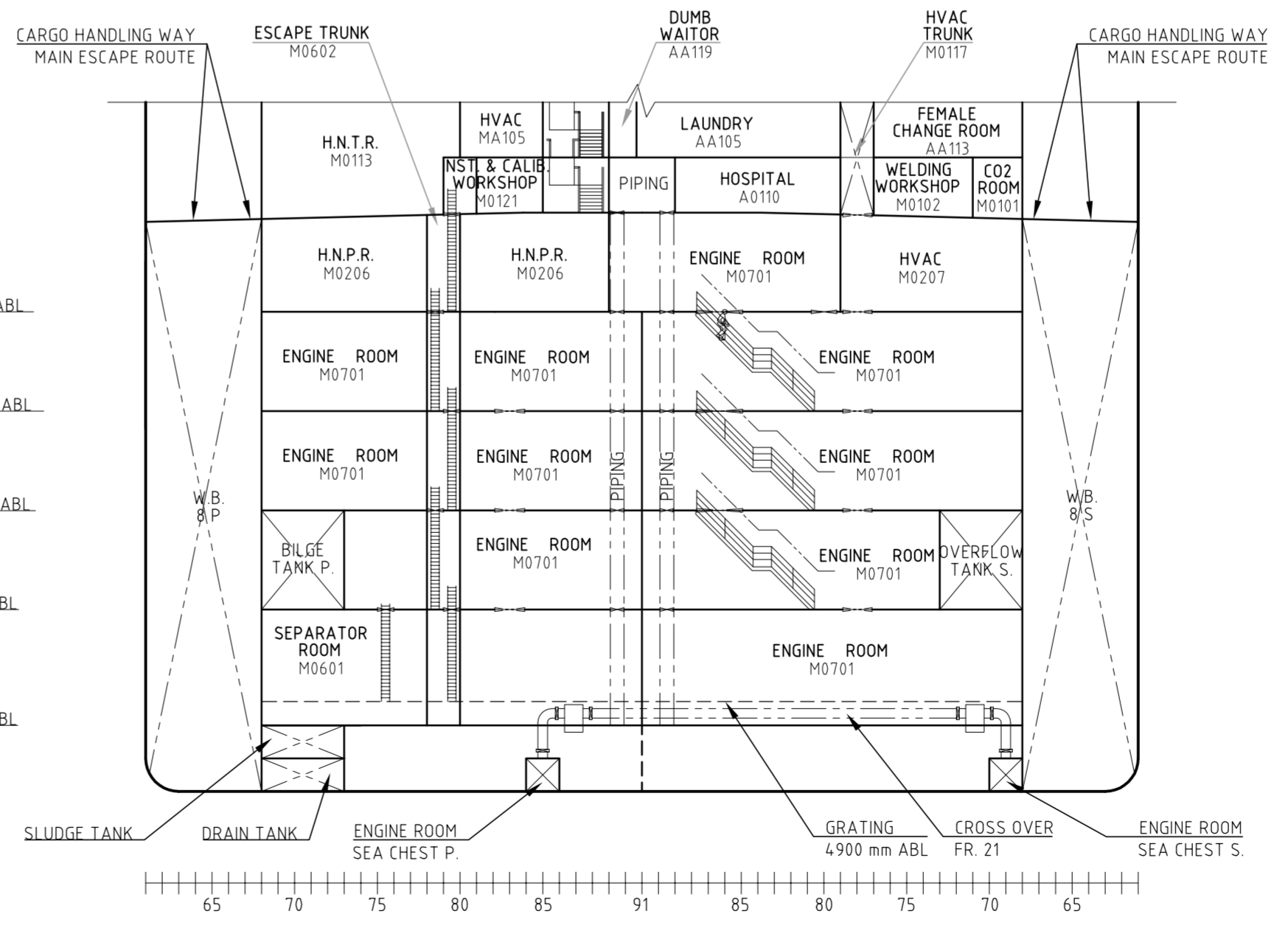
SECTION VIEW C-C
CENTER LINE
LOOKING TOWARDS PORT SIDE



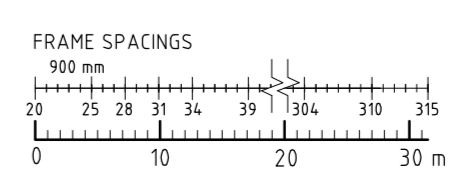
2:ND DECK ENGINE ROOM
LEVEL 26100 mm ABL



SECTION VIEW A-A
FR 13 LOOKING FORWARD
SCALE 1:300



SECTION VIEW B-B
FR 24 LOOKING FORWARD
SCALE 1:300



REFERENCE DOCUMENTS

- I-ET-3000.00-1350-942-EGV-001 GENERAL TECHNICAL DESCRIPTION
- I-DE-3010.92-1350-190-EGV-001 ACCOMMODATION GENERAL ARRANGEMENT MAIN DECK / TWEEN DECK
- I-DE-3010.92-1350-190-EGV-002 ACCOMMODATION GENERAL ARRANGEMENT POOP DECK / 1ST ACCOMMODATION DECK
- I-DE-3010.92-1350-942-EGV-004 ENGINE ROOM ARRANGEMENT 6TH DECK LEVEL 3600
- I-DE-3010.92-1350-942-EGV-005 ENGINE ROOM ARRANGEMENT 5TH DECK LEVEL 9900
- I-DE-3010.92-1350-942-EGV-004 ENGINE ROOM ARRANGEMENT 4TH DECK LEVEL 15300
- I-DE-3010.92-1350-942-EGV-003 ENGINE ROOM ARRANGEMENT 3RD DECK LEVEL 20700
- I-DE-3010.92-5142-942-EGV-001 ARRANGEMENT AND LOCATION OF ELECTRICAL EQUIPMENT HULL NORMAL PANEL ROOM

GENERAL NOTES

- NOTE 1 GENERAL LEVEL OF DETAIL, PENDING VENDOR INFORMATION, WILL BE IMPROVED DURING DETAIL DESIGN PHASE.
- NOTE 2 FOR EQUIPMENT DETAILS AND TAGS IN ENGINE ROOM, SEE MACHINERY ARRANGEMENT DRAWINGS.
- NOTE 3 FOR ACCOMMODATION DETAILS, SEE ACCOMMODATION ARRANGEMENT DRAWINGS.
- NOTE 12 FOR ELECTRICAL EQUIPMENT DETAILS AND TAGS IN ENGINE ROOM, SEE ELECTRICAL EQUIPMENT ARRANGEMENT DRAWINGS.

THIS DRAWING INCLUDES FOLLOWING AREAS		
ROOM NAME	ROOM NO	
HOSPITAL	AA105	
AUDITORIUM	AA103	
LAUNDRY	AA105	
MALE CHANGE ROOM	AA107	
FEMALE CHANGE ROOM	AA113	
DUMB WAITER	AA119	
CO2 ROOM	MA101	
WELDING WORKSHOP	MO102	
BOATSWAIN'S LOCKER	MO112	
HULL NORMAL TRANSFORMER ROOM (H.N.T.R.)	MO113	
HVAC TRUNK	MO117	
DISINFECTION & CALIBRATION WORKSHOP	MO121	
GENERAL STORE	MO205	
HULL NORMAL PANEL ROOM (H.N.P.R.)	MO206	
HVAC	MO207	
SEWAGE TREATMENT COMPARTMENT	MO301	
SEPARATOR ROOM	MO601	
ESCAPE TRUNK	MO602	
ENGINE ROOM	MO701	
HULL BATTERY ROOM (H.B.R.1)	MA102	
HVAC	MA105	

REV.	DESCRIPTION	DATE	EXEC.	CHECK	APPROV.
E	"D.O. SERVICE TANK S" NAME CHANGED TO "D.O. SETTLING TANK S" ISSUED FOR TBB INFORMATION AND DETAIL DESIGN	10/MAY/2012	ECX	LCD	J. SIMÃO
D	REVISED ACCORDING TO ADP-FPSO-HULL-EGV-2010-2011 ISSUED FOR RETAIL DESIGN	11/OCT/2011	GVA	PST	J. SIMÃO
C	REVISED ACCORDING TO ADP-FPSO-HULL-EGV-2010-2011 GENERAL REVISION PERFORMED ISSUED FOR P&ID COMMENTS AND ABS APPROVAL	26/SEP/2011	ECX	LCD	J. SIMÃO
B	REVISED ACCORDING TO ADP-FPSO-HULL-EGV-0914-2011 ISSUED FOR CLIENT REVIEW	20/MAY/2011	GVA	LFR	J. SIMÃO
A	REVISED ACCORDING TO ADP-FPSO-HULL-EGV-0933-2010 ISSUED FOR CLIENT REVIEW	21/FEB/2011	GVA	PST	J. SIMÃO
0	ORIGINAL ISSUE FOR COMMENTS	16/SEP/2010	GVA	JRI	J. SIMÃO

THE INFORMATION CONTAINED IN THIS DOCUMENT IS PETROBRAS PROPERTY AND MAY NOT BE USED FOR PURPOSES OTHER THAN THOSE SPECIFICALLY INDICATED HEREIN. THIS FORM IS PART OF PETROBRAS M-301, REV. J. ANNEX A, FIGURE A.9.

ENGEVIX ENGENHARIA S.A.
CONTRACT NO.: 50100-1197/00-9B-DE-9003-E
GVA NO.: 10032-GE-DG-031-0002_Q
REC. RESP.: ALEXANDRE C. M. CANHETTI
AUTOCAD Ver. 2005 / I-DE-3010.92-1351-942-EGV-011E.dwg
SHEET NO.: RJ-2008104714

BR PETROBRAS ENGENHARIA IEEPT/IEPSA

CLIENT: **E&P**

PROGRAM: **PRESALT FPSOs - HULL**

AREA: **PETROBRAS 66 (P-66)**

TITLE: **GENERAL ARRANGEMENT DRAWING
MACHINERY SPACES & TANK ARRANGEMENT**

PROJ.	EGV/GVA	EXEC.	GVA	CHECK	JRI	APPROV.	J. SIMÃO
SCALE	1:600	DRAWING				SHEET	1 of 1
DATE	16/SEP/2010						