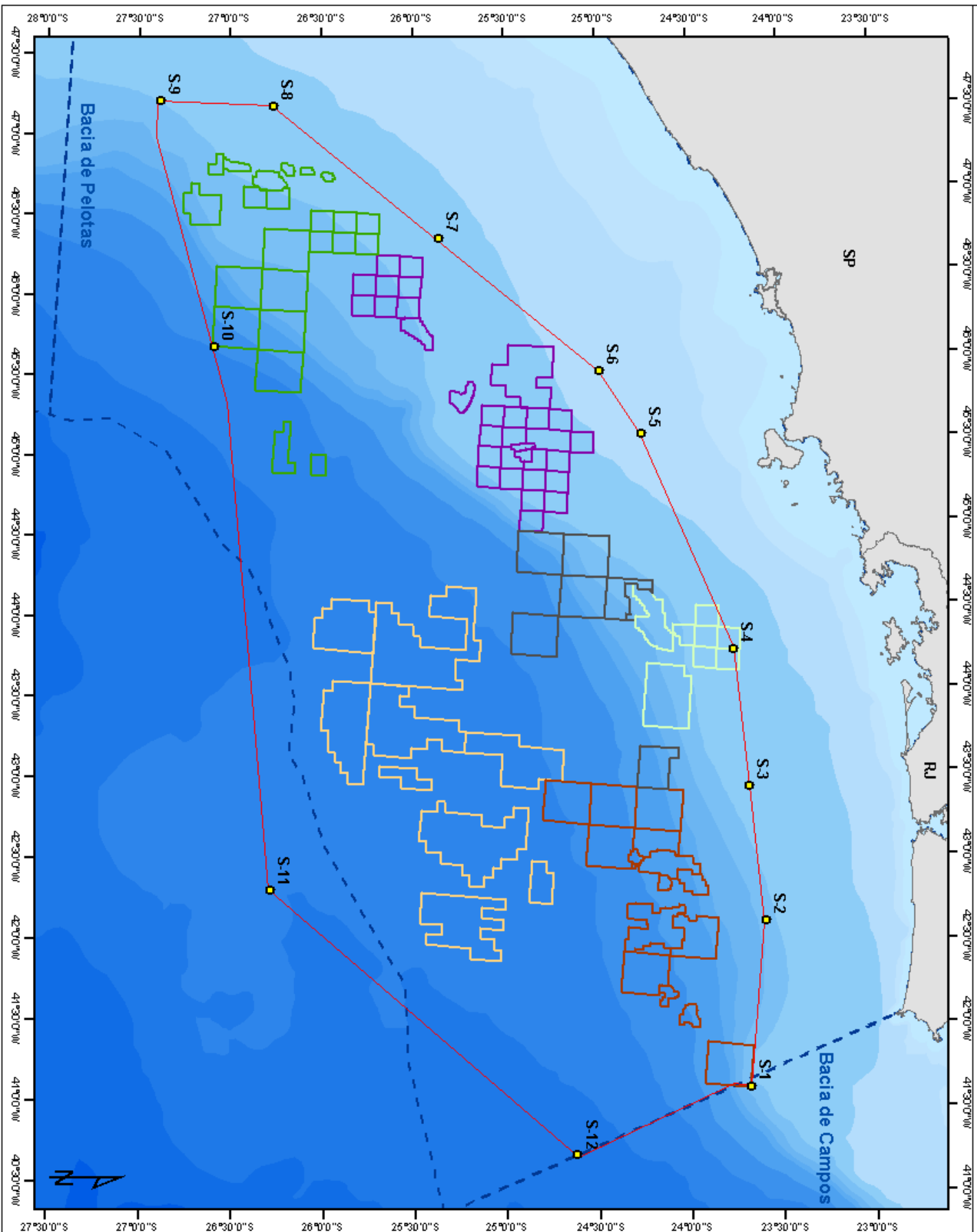


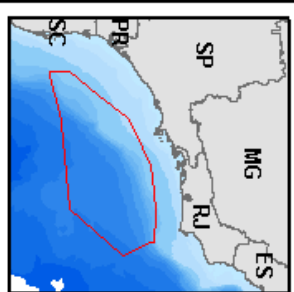
# MAPA DA ÁREA GEOGRÁFICA DA BACIA DE SANTOS



## Legenda

- Pontos Nova AGBS
- Nova AGBS
- Blocos Sem Informação
- Polo Uruguaá
- Polo Mexilhão
- Polo Sul
- Polo Merluza
- Polo Centro
- Estados
- Bacias

## Mapa de Localização



## Escala Gráfica

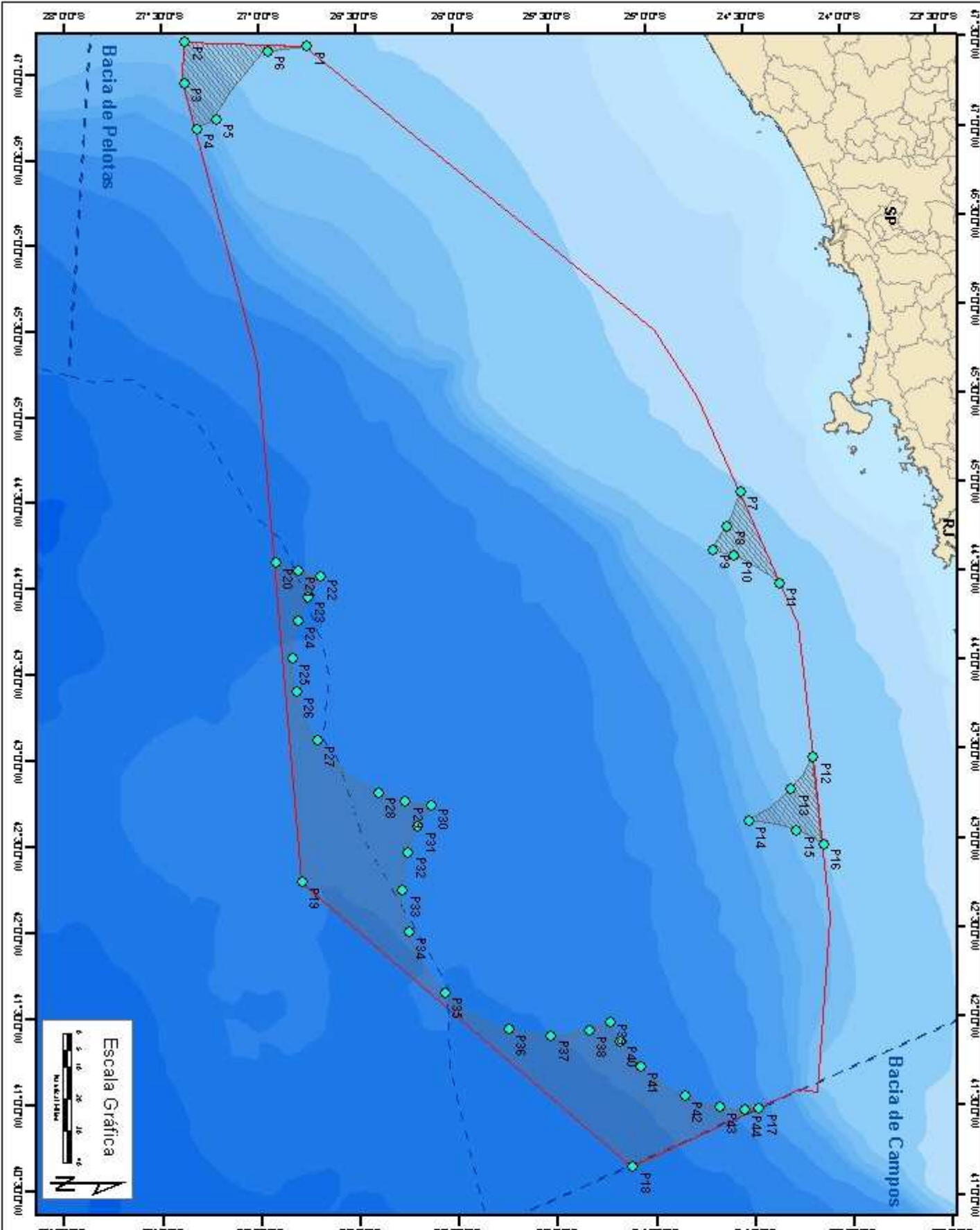


## Ponto Latitude(S) Longitude(W)

Ponto	Latitude(S)	Longitude(W)
S1	-23°45'00"	41°30'00"
S2	-23°45'00"	42°30'00"
S3	-23°53'4,30"	43°18'01,10"
S4	-24°02'30"	44°07'30"
S5	-24°37'30"	45°22'30"
S6	-24°52'30"	45°45'00"
S7	-25°47'48"	46°29'36,50"
S8	-26°45'00"	47°15'00"
S9	-27°22'30"	47°15'00"
S10	-27°00'00"	45°45'00"
S11	-26°27'49,98"	42°25'37,28"
S12	-24°39'09,06"	45°59'26,34"

INSTITUTO BRASILEIRO DE PESQUISA E GESTÃO DE RECURSOS HÍDRICOS  
 PROJETO DE PESQUISA DE BACIAS DE SANTOS  
 ESCALA: 1:50.000  
 DATA: 2010

# LOCALIZAÇÃO DOS PONTOS P



**Legenda**

- Pontos P
- Nova AGBS
- Área dos Pontos P
- Municípios
- Estados
- Bacias



Ponto	Latitude (S)	Longitude (W)
P1	-28°44'42,88"	-47°16'13,94"
P2	-27°22'19,85"	-47°16'14,82"
P3	-27°22'19,91"	-47°00'22,88"
P4	-27°14'43,74"	-47°44'35,82"
P5	-27°14'39,91"	-47°44'46,09"
P6	-28°56'51,80"	-47°12'46,01"
P7	-24°22'40,88"	-44°51'16,40"
P8	-24°09'53,21"	-44°09'15,46"
P9	-24°09'52,87"	-44°01'02,34"
P10	-24°23'10,84"	-44°29'23,88"
P11	-24°08'26,08"	-44°21'10,88"
P12	-23°54'24,32"	-43°23'01,31"
P13	-24°00'30,16"	-43°11'46,81"
P14	-24°12'31,66"	-42°59'49,29"
P15	-23°49'10,54"	-42°57'58,11"
P16	-24°02'26,90"	-41°22'41,29"
P17	-24°58'46,89"	-40°58'01,22"
P18	-28°27'30,40"	-42°28'16,67"
P19	-28°27'30,40"	-44°16'53,10"
P20	-28°27'11,52"	-44°12'10,19"
P21	-28°30'07,32"	-44°12'10,82"
P22	-28°27'28,67"	-44°04'54,62"
P23	-28°27'28,67"	-43°56'16,81"
P24	-28°27'28,67"	-43°42'54,88"
P25	-28°27'28,67"	-43°31'33,48"
P26	-28°27'28,67"	-43°15'32,28"
P27	-28°27'28,67"	-42°59'17,28"
P28	-28°27'28,67"	-42°56'54,32"
P29	-28°27'28,67"	-42°56'26,29"
P30	-28°27'28,67"	-42°56'26,29"
P31	-28°27'28,67"	-42°56'26,29"
P32	-28°27'28,67"	-42°56'26,29"
P33	-28°27'28,67"	-42°56'26,29"
P34	-28°27'28,67"	-42°56'26,29"
P35	-28°27'28,67"	-42°56'26,29"
P36	-28°27'28,67"	-42°56'26,29"
P37	-28°27'28,67"	-42°56'26,29"
P38	-28°27'28,67"	-42°56'26,29"
P39	-28°27'28,67"	-42°56'26,29"
P40	-28°27'28,67"	-42°56'26,29"
P41	-28°27'28,67"	-42°56'26,29"
P42	-28°27'28,67"	-42°56'26,29"
P43	-28°27'28,67"	-42°56'26,29"
P44	-28°27'28,67"	-42°56'26,29"