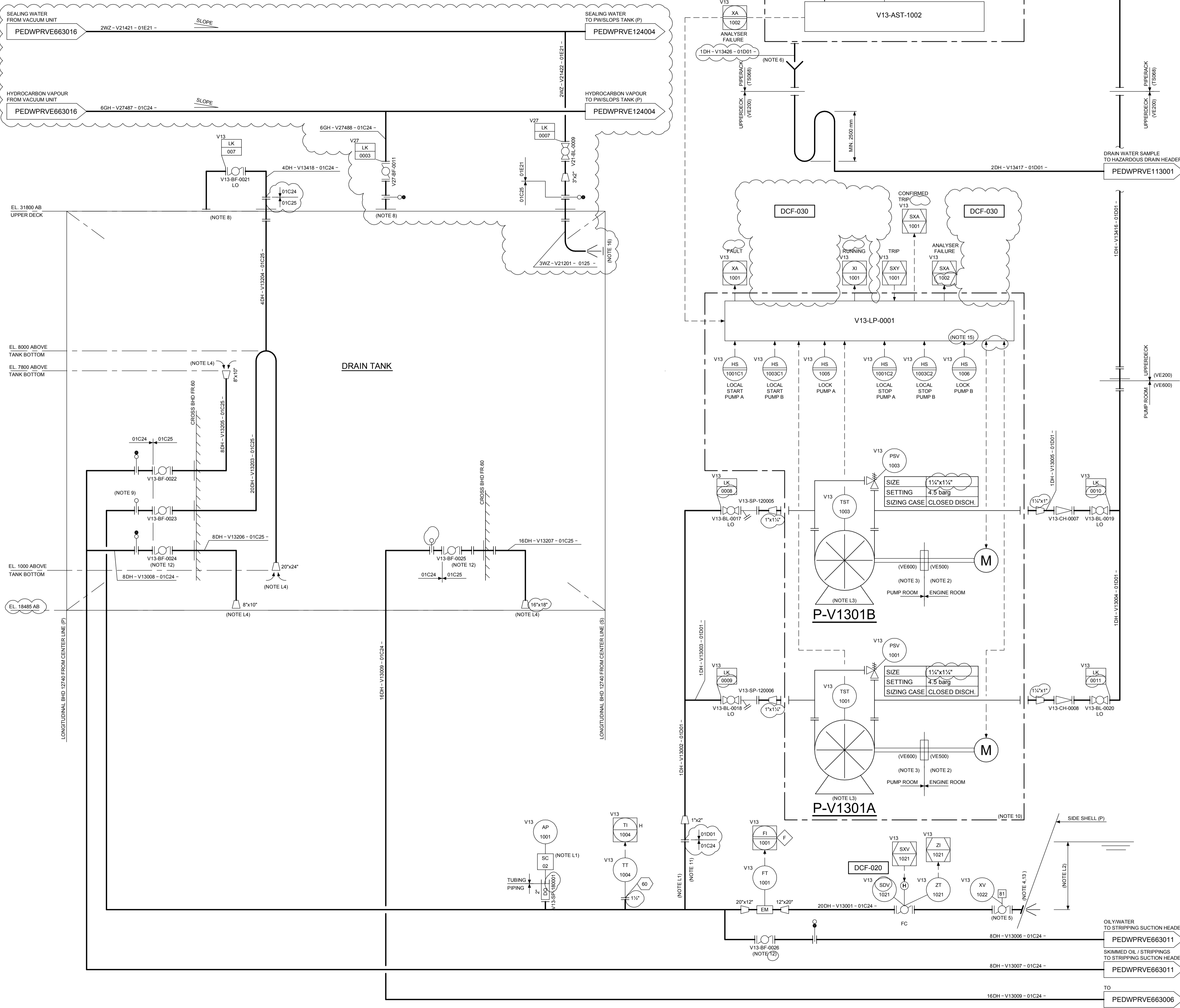


OCM SAMPLE PUMP (NEW)	
TAG	P-V1301A/B
TYPE	HOR. PROG. CAVITY
MEDIUM	WATER & SLOPS
DESIGN TEMP.	60°C
DESIGN CAPACITY	720 L/H
DESIGN PRESSURE	4.5 barg
OPERATION PRESSURE	3 barg
OPERATING TEMP.	26 - 50°C
DRIVER	ELECTRIC MOTOR

OCM (NEW)	
TAG	A-V1301
TYPE	UV FLUORESCENCE
MEASURING RANGE	0 - 100 ppm
DESIGN PRESSURE	3.5 barg
DESIGN TEMP.	60°C
OPERATING PRESSURE	range 0.34-1.37 barg
OPERATING TEMP.	26 - 50°C



GENERAL NOTES	
ID	DESCRIPTION
1	ALL DIMENSIONS IN MM, EXCEPT LINE SIZES/ UNLESS OTHERWISE STATED.
2	ENGINE ROOM BULKHEAD SEALING PACK
3	PUMP ROOM BULKHEAD SEALING PACK
4	HULL PENETRATION PIECE SHALL HAVE WALL THICKNESS SAME AS HULL PLATE THICKNESS (20" - SCH60 : 508 x 20.6mm) AND SHALL INTERNALLY EPOXY COATED
5	HULL VALVES TO BE SUPPLIED WITH ABS CERTIFICATE
6	ATMOSPHERIC BACK PRESSURE REQUIRED TO PREVENT OCM SENSOR OVERFLOW
7	DELETED
8	OPEN CONNECTION TO TANK
9	SUPPLIED IN PAIRS (ONE PADDLE BLANK, ONE PADDLE SPACER)
10	PART OF A-V1301 PACKAGE/SCOPE
11	SACRIFICIAL PIPE SPOOL
12	VALVE POSITION TO BE SHOWN ON HMI (NO LIMIT SWITCHES REQUIRED)
13	HULL PENETRATION PIPE PIECE TO BE SUPPLIED WITH ABS CERTIFICATE
14	DELETED
15	DUTY STANDBY CONTROL : ONE PUMP RUNNING, OTHER STANDBY
16	EROSION PLATE

LAYOUT NOTES	
ID	DESCRIPTION
L1	SAMPLE CONNECTION SHALL BE FROM THE TOP OF HORIZONTAL PIPE SECTION
L2	OVERBOARD DISCHARGE TO BE BELOW MINIMUM DRAFT.
L3	SAMPLE PUMP TO BE INSTALLED AT AN ELEVATION LOWER THAN THE GRAVITY OVERBOARD DISCHARGE LINE
L4	INLETS TO BE OPPOSITE TANKS OUTLET

REFERENCE DOCUMENTS		
ID	SBM DOC. NUMBER	DESCRIPTION
1	PEDWPRPG999003	FPISO - PIPING LEGEND - P&ID
2	PEDWPRPG999004	FPISO - PIPING IDENTIFICATION LEGEND - P&ID
3	PEDWPRPG999005	FPISO - INSTRUMENTATION LEGEND - P&ID
4	PEDWPRPG999006	FPISO - EQUIPMENT LEGEND - P&ID
5	PEDWPRPG999007	FPISO - TYPICAL DETAILS - P&ID 1
6	PEDWPRPG999008	FPISO - TYPICAL DETAILS - P&ID 2
7	PEDWPRPG999009	FPISO - TYPICAL DETAILS - P&ID 3
8	PESDPITS999120	TOPSIDES - PIPING DETAILS - SPECIFICATIONS
9	PEDWPRVE113001	VESSEL-HAZARDOUS OPEN DRAIN SYSTEM P&ID 1
10	PEDWPRVE113002	VESSEL-HAZARDOUS OPEN DRAIN SYSTEM P&ID 2
11	PEDWPRVE113003	VESSEL-HAZARDOUS OPEN DRAIN SYSTEM P&ID 3
12	PESDPIVE999014	VESSEL PIPING DETAILS SPECIFICATION

EXISTING VESSEL DRAWINGS	
ID	DESCRIPTION

LEGEND	
	NEW PIPELINES (CONVERSION)
	NEW VALVES (CONVERSION)
	CLOUD INDICATING CHANGES FROM PREVIOUS REVISION
	CLOUD INDICATING ITEMS ON HOLD

HOLDS	
ID	DESCRIPTION

Revision	Date (dd-MMM-yy)	Description of revision	Prepared by	Engineered by	Approved by	Checked by
A1	22-OCT-12	APPROVED FOR CONSTRUCTION (ABS REF. 897431)	Jao	Koe	Bob	Son
V1	03-APR-12	INVALID FOR CONSTRUCTION	Ere	Koe	Bob	Boo

Client: **PETROBRAS NETHERLANDS BV**

Project: **FPISO CIDADE DE ILABELA**

Title: **VESSEL DRAIN TANK P&ID**

Format	Projection Method	Scale	Project Number	Document Number	Sheet No./Sheets	Revision
A1		N.T.S.	HI 39520	PEDWPRVE113004	1 / 1	A1