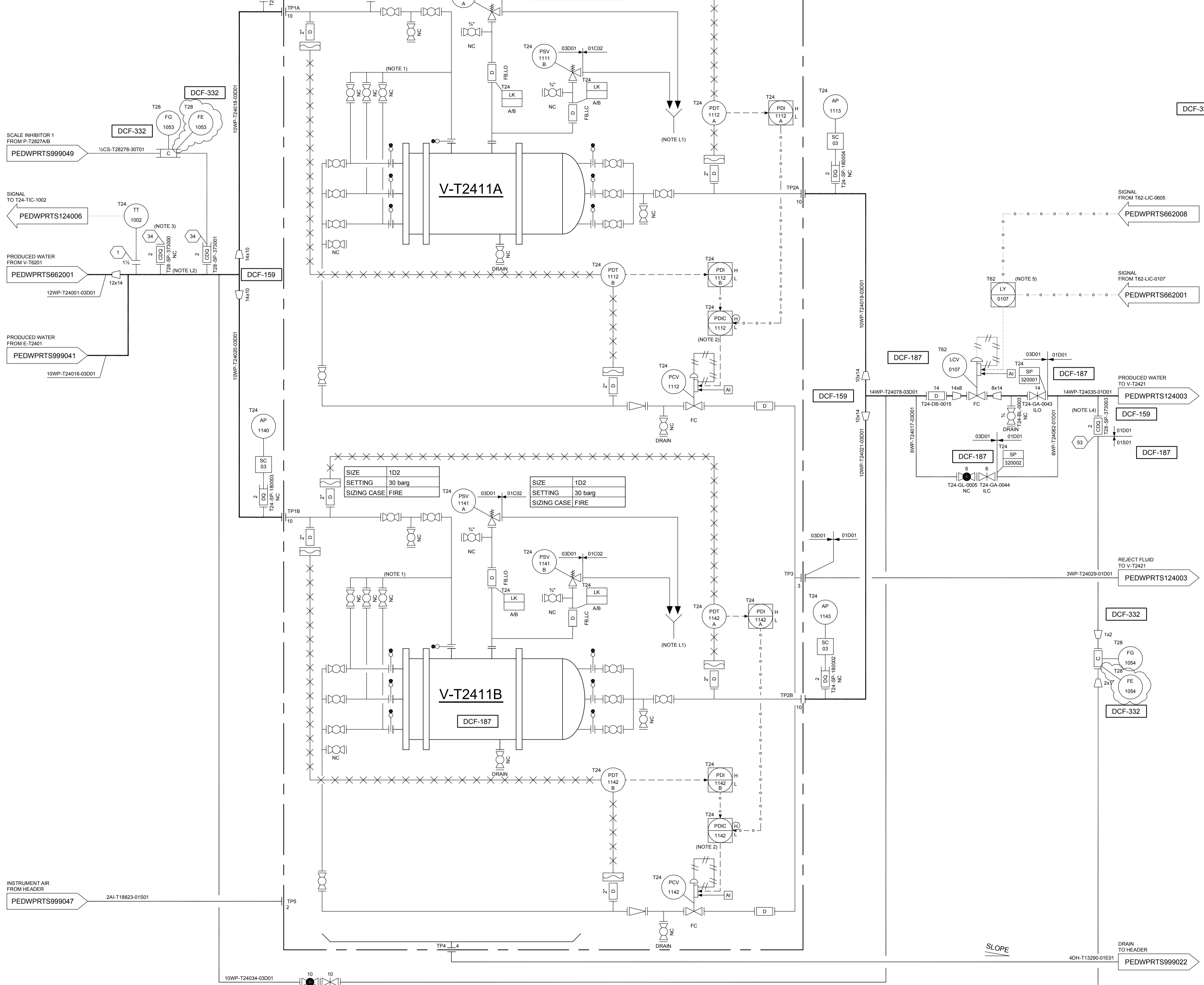


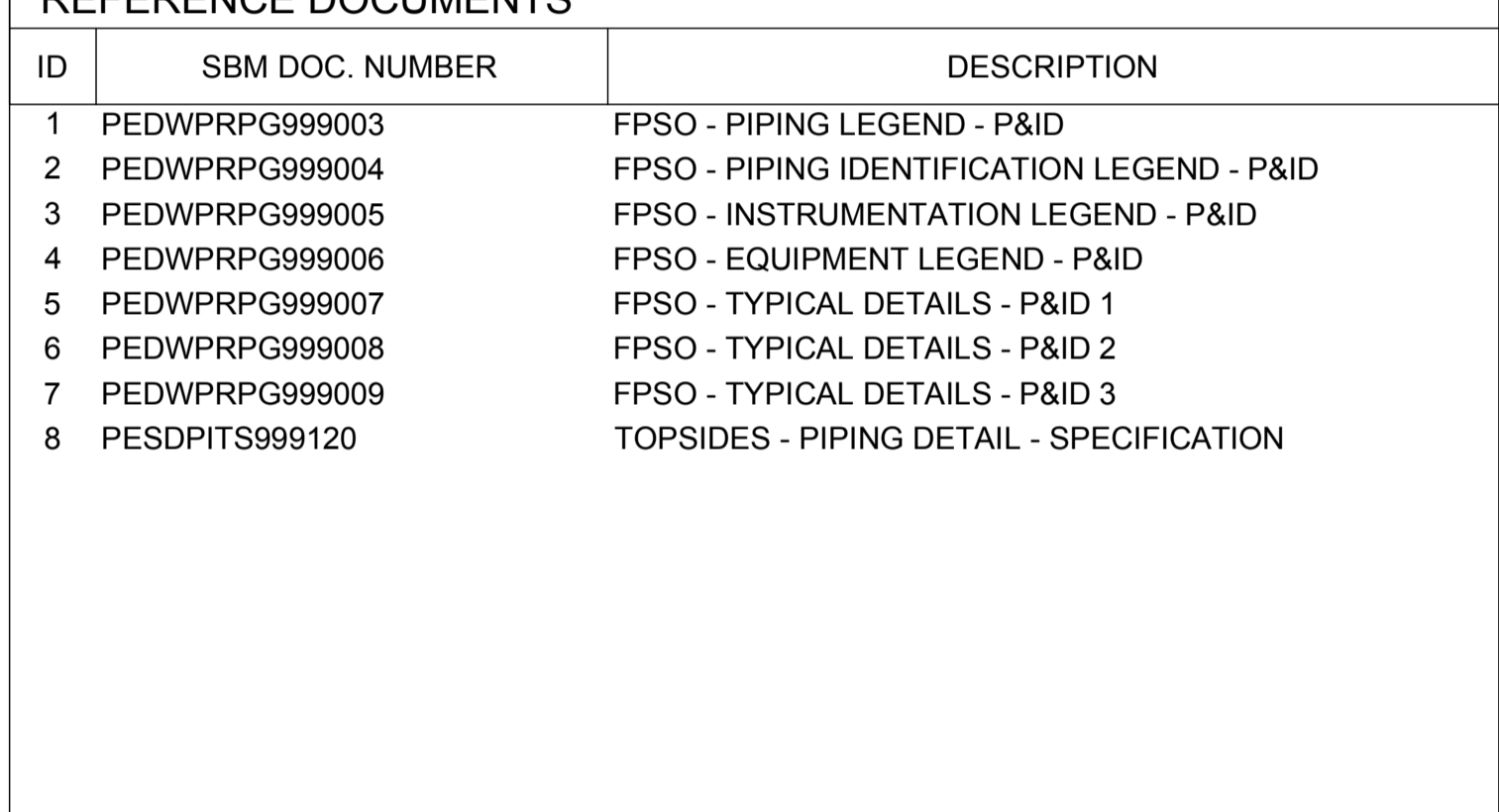
PRODUCED WATER HYDROCYCLONES (2x50%)	
TAG	V-T2411A/B
OD x LENGTH (mm x mm)	768x1035
DESIGN CAPACITY (m <sup>3</sup> /h)	878
DESIGN PRESSURE [bar(g)]	FV/30
DESIGN TEMPERATURE (°C)	105
OPERATING PRESSURE [bar(g)]	19
OPERATING TEMPERATURE (°C)	40
MOC (SHELL)	CS + GFL
MOC (LINER)	DSS



GENERAL NOTES	
ID	DESCRIPTION
1	BACK FLUSH FACILITY
2	DIFFERENTIAL PRESSURE RATIO CONTROL
3	PROVISION FOR INJECTION OF DEOILER
4	DELETED
5	PRODUCTION MODE SELECTOR. DURING THE EARLY LIFE PRODUCTION MODE T62-LCV-0107 SHALL BE CONTROLLED BY T62-LIC-0605. IN THE LATE LIFE PRODUCTION MODE T62-LCV-0107 SHALL BE CONTROLLED BY T62-LIC-0107

LAYOUT NOTES	
ID	DESCRIPTION
L1	TO SKID DRIP-TRAY
L2	MINIMUM DISTANCE BETWEEN DEOILER INJECTION POINT AND HYDROCYCLONE SHALL BE 1 METER
L3	DELETED
L4	INJECTION POINT TO BE LOCATED AS CLOSE AS POSSIBLE TO THE V-T2421

REFERENCE DOCUMENTS		
ID	SBM DOC. NUMBER	DESCRIPTION
1	PEDWPRPG999003	FPISO - PIPING LEGEND - P&ID
2	PEDWPRPG999004	FPISO - PIPING IDENTIFICATION LEGEND - P&ID
3	PEDWPRPG999005	FPISO - INSTRUMENTATION LEGEND - P&ID
4	PEDWPRPG999006	FPISO - EQUIPMENT LEGEND - P&ID
5	PEDWPRPG999007	FPISO - TYPICAL DETAILS - P&ID 1
6	PEDWPRPG999008	FPISO - TYPICAL DETAILS - P&ID 2
7	PEDWPRPG999009	FPISO - TYPICAL DETAILS - P&ID 3
8	PESDPITS999120	TOPSIDES - PIPING DETAIL - SPECIFICATION



LEGEND	
	CLOUD INDICATING CHANGES FROM PREVIOUS REVISION

TS063

A2	20-SEP-13	APPROVED FOR CONSTRUCTION (ABS REF. 897550)	Spp	Btn	Btn	Vra
A1	16-NOV-12	APPROVED FOR CONSTRUCTION (ABS REF. 897550)	Kom	Way	Vra	Wih
V1	26-JUN-12	VALID FOR CONSTRUCTION	Lad	Way	Vra	Wih
C1	30-MAR-12	FOR COMMENTS AND APPROVALS	Roa	Way	Vra	Cem
I1	10-JAN-12	INTER DISCIPLINE CHECKING	Jaj	Way	Vra	Cem

Revision	Date (dd-MMM-yy)	Description of revision	Prepared by	Engineering checked by	Approved by LE	Approved by EPM

 Engineering Subcontractor: SINGLE BODY MICROVESA INC. P.O. Box 152 5, route des Fribourgs CH-1723 Mably Switzerland Tel: +41 26 439 99 20 Fax: +41 26 439 99 39 www.sbmoffshore.com	© Copyright SBM Offshore N.V. 2012 Copyright by SBM Offshore N.V. or any of its subsidiaries. This document is the property of SBM Offshore N.V. or any of its subsidiaries. This document or any part thereof is CONFIDENTIAL and may not be made known, copied, published, or used in any other way without the permission of SBM Offshore N.V. or any of its subsidiaries.	 PETROBRAS NETHERLANDS B.V.
---	---	--------------------------------

Client: **PETROBRAS NETHERLANDS BV**  
 Project: **FPISO CIDADE DE ILHABELA**  
 Title: **TOPSIDES PRODUCED WATER HYDROCYCLONES P&ID**

Format	Projection Method	Scale	Project Number	Document Number	Sheet No./Sheets	Revision
A1		N.T.S.	HI 39520	PEDWPRTS124002	1 / 1	A2