

CARGO OIL PUMP 3 (EXISTING)	
TYPE	CENTRIFUGAL
MEDIUM	CRUDE OIL, PROD. WATER
DESIGN CAPACITY	5000M m3/h
DIFFERENTIAL HEAD	150 m
NPSH REQ.	4.5 mwc
OPERATING TEMP.	RANGE 26°C - 60°C
DESIGN TEMP.	75°C
DESIGN PRESS.	18.8 barg
HYDRAULIC TEST PRESS.	24 barg
DRIVER	STEAM TURBINE

GENERAL NOTES	
ID	DESCRIPTION
1	ENGINE ROOM BHD SEAL TEMP. (REMOTE TRANSMITTER)
2	DRIVE END BEARING TEMP. (REMOTE TRANSMITTER)
3	NON DRIVING END BEARING TEMP. (REMOTE TRANSMITTER)
4	CASING TEMPERATURE (REMOTE TRANSMITTER)
5	INTERMEDIATE SHAFT TEMP. (REMOTE TRANSMITTER)
6	HYDRAULIC VALVE TO BE CONTROLLABLE (FOR THROTTLING)
7	CONVERTED EXISTING SEPARATOR VESSEL (GAS EXTRACTION SYSTEM TO BE DEMOLISHED)

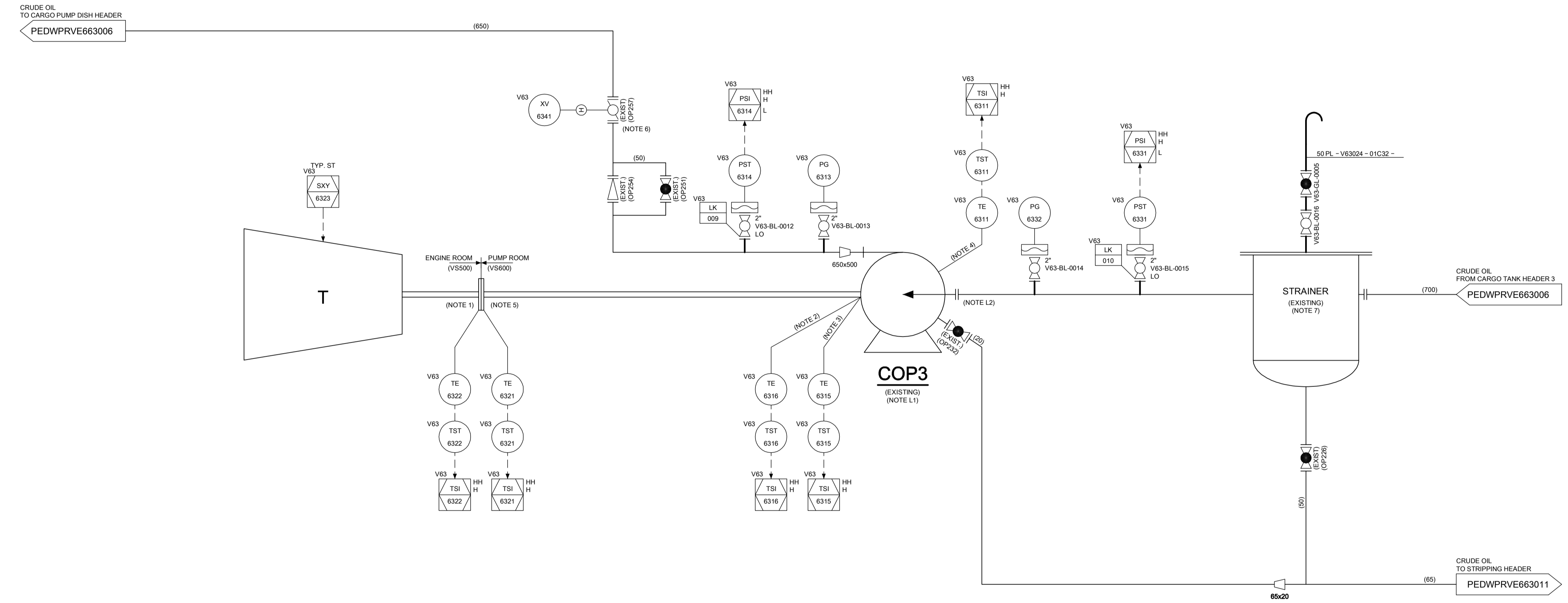
LAYOUT NOTES	
ID	DESCRIPTION
L1	CARGO PUMP EMERGENCY STOP PUSH BUTTON AT: - BOTTOM OF PUMP ROOM - TOP OF PUMP ROOM - CCR - OFFLOADING PLATFORM AFT & FWD
L2	PUMP AND SUCTION STRAINER ARE FITTED FLANGE TO FLANGE.

REFERENCE DOCUMENTS		
ID	SBM DOC. NUMBER	DESCRIPTION
1	PEDWPRPG999003	FP SO - PIPING LEGEND - P&ID
2	PEDWPRPG999004	FP SO - PIPING IDENTIFICATION LEGEND - P&ID
3	PEDWPRPG999005	FP SO - INSTRUMENTATION LEGEND - P&ID
4	PEDWPRPG999006	FP SO - EQUIPMENT LEGEND - P&ID
5	PEDWPRPG999007	FP SO - TYPICAL DETAILS - P&ID 1
6	PEDWPRPG999008	FP SO - TYPICAL DETAILS - P&ID 2
7	PEDWPRPG999009	FP SO - TYPICAL DETAILS - P&ID 3

EXISTING VESSEL DRAWINGS	
ID	DESCRIPTION
1	OT70028-DNE PIPING DIAGRAM OF CARGO OIL AND WATER BALLAST SYSTEM 58054
2	OT70028-DNE FINAL DRAWINGS FOR CARGO OIL PUMP, CARGO OIL PUMP TURBINE WATER BALLAST PUMP & VACUUM STRIPPING SYSTEM (C-PAC SYSTEM) 58172
3	OT70028-DNE ARRANGEMENT IN PUMP ROOM 58061

LEGEND	
	NEW PIPELINES (CONVERSION)
	EXISTING PIPELINES
	NEW VALVES (CONVERSION)
	EXISTING VALVES

VE600



C1	21-DEC-11	FOR COMMENTS AND/OR APPROVAL	Erh	Koe	Bob	Smc
I1	02-NOV-11	INTER DISCIPLINARY CHECK	Spp	Koe	Bob	Smc

Revision	Date (dd-MMM-yy)	Description of revision	Prepared by	Engineering checked by	Approved by LE	Approved by EPM

SBM OFFSHORE
Engineering Subcontractor to:
SINGAPORE MERCHANT MARINE INC.
P.O. Box 152
5, North Sea Quay
CH-1723 Admiralty
Singapore
Tel: +65 438 99 20
Fax: +65 28 439 99 39

© Copyright SBM Offshore N.V. 2011
COPYRIGHT BY SBM OFFSHORE N.V. OR ITS AFFILIATE. THIS DOCUMENT AND ITS CONTENTS ARE THE CONFIDENTIAL PROPERTY OF SBM OFFSHORE N.V. OR ITS AFFILIATE AND AS SUCH THIS DOCUMENT, OR ANY PART THEREOF, MAY NOT BE MADE KNOWN, BE COPIED, OR BE MULTIPLIED OR IN ANY OTHER WAY USED WITHOUT THE EXPRESS PERMISSION OF SBM OFFSHORE N.V. OR ITS AFFILIATE.

PETROBRAS NETHERLANDS B.V.

Client: PETROBRAS NETHERLANDS BV

Project: FPSO CIDADE DE ILHABELA

Title: VESSEL CARGO SYSTEM PUMP ROOM P&ID 4

Format	Projection Method	Scale	Project Number	Document Number	Sheet No./Sheets	Revision
A1		N.T.S.	HI 39520	PEDWPRVE663009	1 / 1	C1