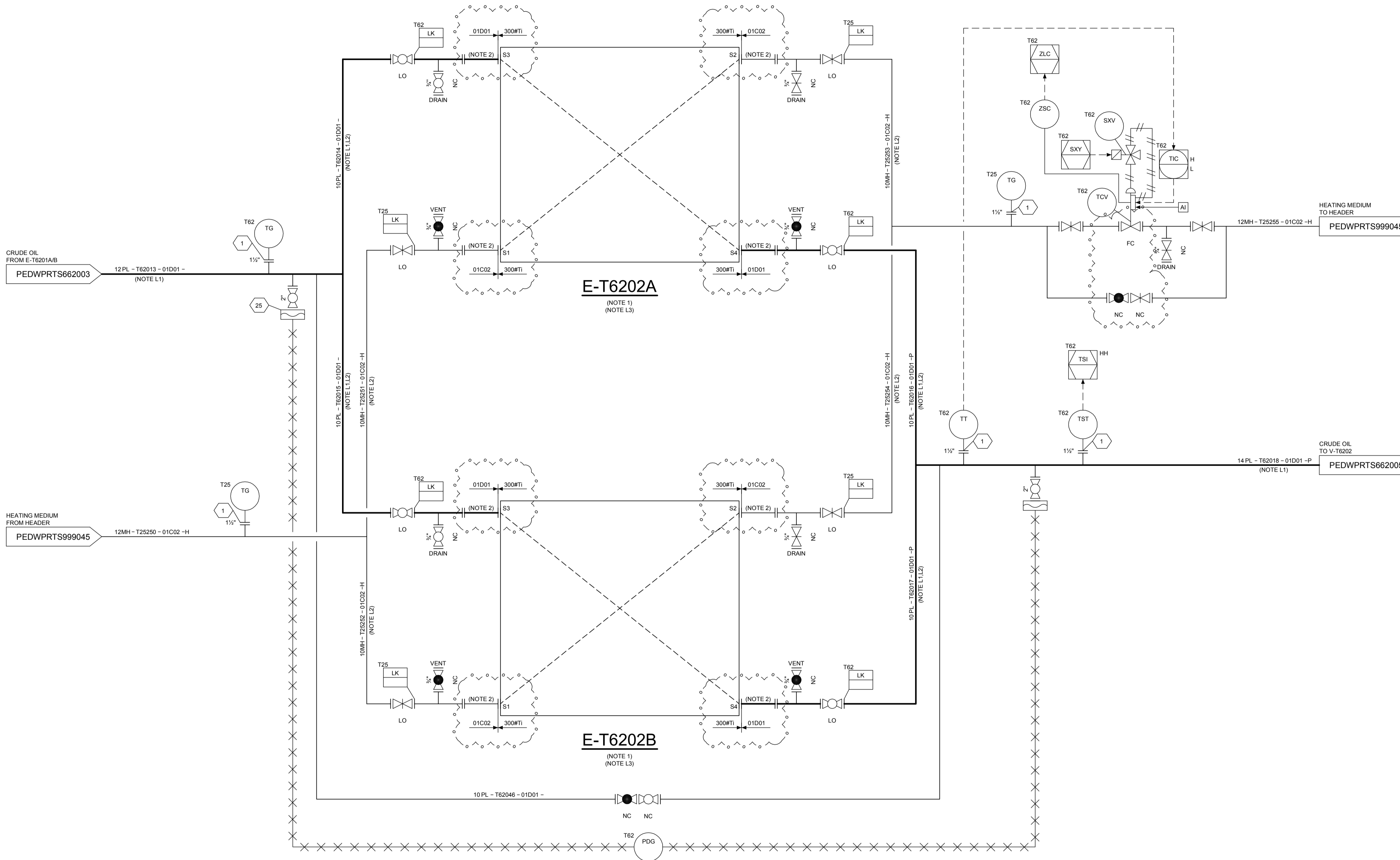


CRUDE OIL HEATERS (2x50%)		
TAG	E-T6202A/B	
DESIGN DUTY (kW)		
	HOT SIDE	COLD SIDE
DESIGN PRESSURE bar(g)	FV/14.9	FV/15
DESIGN TEMPERATURE (°C)	145	145
OPERATING PRESSURE bar(g)		
OPERATING TEMPERATURE (°C)		
MOC	TITANIUM	TITANIUM



GENERAL NOTES	
ID	DESCRIPTION
1	HEAT EXCHANGER SHALL BE DRAINED IMMEDIATELY UPON BLOCK-IN TO AVOID DEPRESSURIZATION DUE TO THERMAL EXPANSION
2	REMOVABLE SPOOL

LAYOUT NOTES	
ID	DESCRIPTION
L1	NO POCKETS
L2	INLET & OUTLET LINES SHALL BE SYMMETRICAL TO ENSURE EQUAL FLOW DISTRIBUTION
L3	LOCATION OF NOZZLES IS SCHEMATIC. FOR EXACT LOCATION REFER TO G.A. DRAWING

REFERENCE DOCUMENTS		
ID	SBM DOC. NUMBER	DESCRIPTION
1	PEDWPRPG999003	FPISO - PIPING LEGEND - P&ID
2	PEDWPRPG999004	FPISO - PIPING IDENTIFICATION LEGEND - P&ID
3	PEDWPRPG999005	FPISO - INSTRUMENTATION LEGEND - P&ID
4	PEDWPRPG999006	FPISO - EQUIPMENT LEGEND - P&ID
5	PEDWPRPG999007	FPISO - TYPICAL DETAILS - P&ID 1
6	PEDWPRPG999008	FPISO - TYPICAL DETAILS - P&ID 2
7	PEDWPRPG999009	FPISO - TYPICAL DETAILS - P&ID 3
8	PESDPITS999120	TOPSIDES - PIPING DETAIL - SPECIFICATION

LEGEND	
	CLOUD INDICATING ITEM ON HOLD

HOLDS	
ID	DESCRIPTION
1	OPERATING / DESIGN CONDITIONS
2	CONTROL VALVE AND BY-PASS SIZE
3	CONNECTIONS HEAT EXCHANGERS

TS062

Revision	Date (dd-MMM-yy)	Description of revision	Prepared by	Engineered by	Approved by	Checked by
11	29-DEC-11	INTER DISCIPLINE CHECKING				

 Engineering Subcontractor: SINGLE BODY OFFSHORE INC. P.O. Box 152 S. route des Fougères CH-1723 Mably Switzerland Tel: +41 26 439 99 20 Fax: +41 26 439 99 39 www.sbmoffshore.com	© Copyright SBM Offshore N.V. 2011 All rights reserved. SBM Offshore N.V. or its affiliates. This document and its contents are the confidential property of SBM Offshore N.V. or its affiliates and as such this document, or any part thereof, may not be made known, be copied, or be multiplied or in any other way used without the express permission of SBM Offshore N.V. or its affiliates.	
---	--	--

Client	PETROBRAS NETHERLANDS BV	
Project	FPISO CIDADE DE ILHABELA	

TOPSIDES CRUDE OIL HEATERS P&ID			
---------------------------------------	--	--	--

Format	Projection Method	Scale	Project Number	Document Number	Sheet No./Sheets	Revision
A1		N.T.S.	HI 39520	PEDWPRTS662004	1 / 1	11