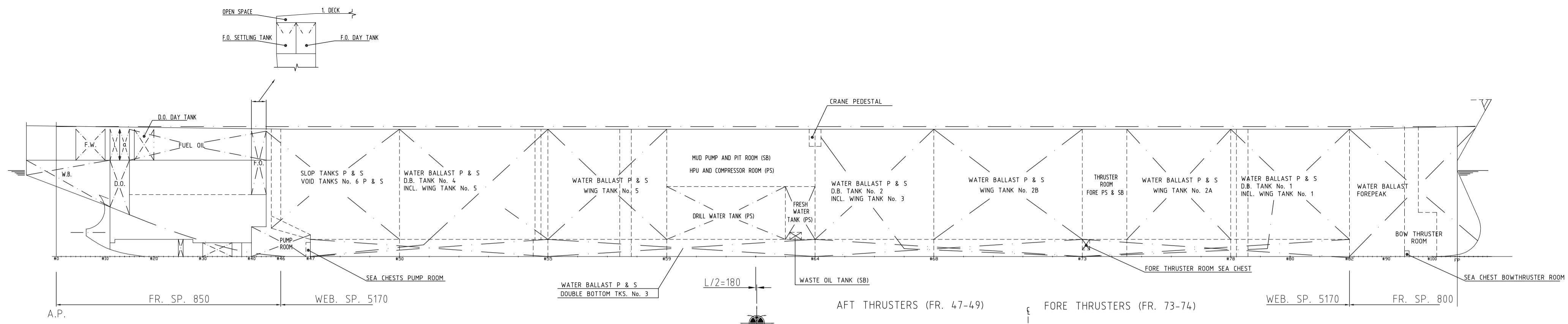


LENGTH BETW. PERP.....244.00 M
 BREADTH MLD.....46.00 M
 DEPTH TO MAINDECK MLD.....22.20 M



CARGO OIL TANKS				
COMPARTMENT	VOL. M ³	100%		TONNES
		98%	99%	
CENTRE TANK IN No. 1	FRS. 73-82	22916	22518	22847.2
CENTRE TANK IN No. 2	FRS. 64-73	23265.8	22801	23139.6
CENTRE TANK IN No. 3	FRS. 55-59	10,958.0	10,738.8	10889.2
CENTRE TANK IN No. 4	FRS. 43-55	20,994.3	20,574.4	20,862.5
SLOP TANK P	FRS. 43-50	1,995.7	1,985.8	1,983.2
SLOP TANK S	FRS. 43-50	2,021.9	1,981.5	2,009.2
		82,473.3	80,602.4	81,730.8

DIESEL OIL TANKS				
COMPARTMENT	VOL. M ³	100%		TONNES
		98%	99%	
D.B. TANK IN ENGINE ROOM	S FRS. 30-40	91.6	89.8	76.7
DEEP TANK IN ENGINE ROOM	C FRS. 11-15	279.3	273.7	233.8
DAY TANK IN ENGINE ROOM	P FRS. 16-20	80.7	79.1	67.5
DIESEL OIL STORAGE TANK (MOONPOOL)	S FRS. 59-64	1,226.9	1,202.4	1,026.8
DIESEL OIL TANK IN MUD PIT AREA	S FRS. 62-63	49.0	48.0	41.0
		1,727.5	1,692.9	1,445.8

FRESH WATER TANKS				
COMPARTMENT	VOL. M ³	100%		TONNES
		98%	99%	
FW TANKS ON ST. GEAR PLATFORM	S-P FRS. 4-10	4,25.0	4,16.5	4,16.5
FW TANK IN MOONPOOL AREA	(P) FRS. 63-64	4,41.6	4,32.8	4,32.8
		8,66.6	8,49.3	8,49.3

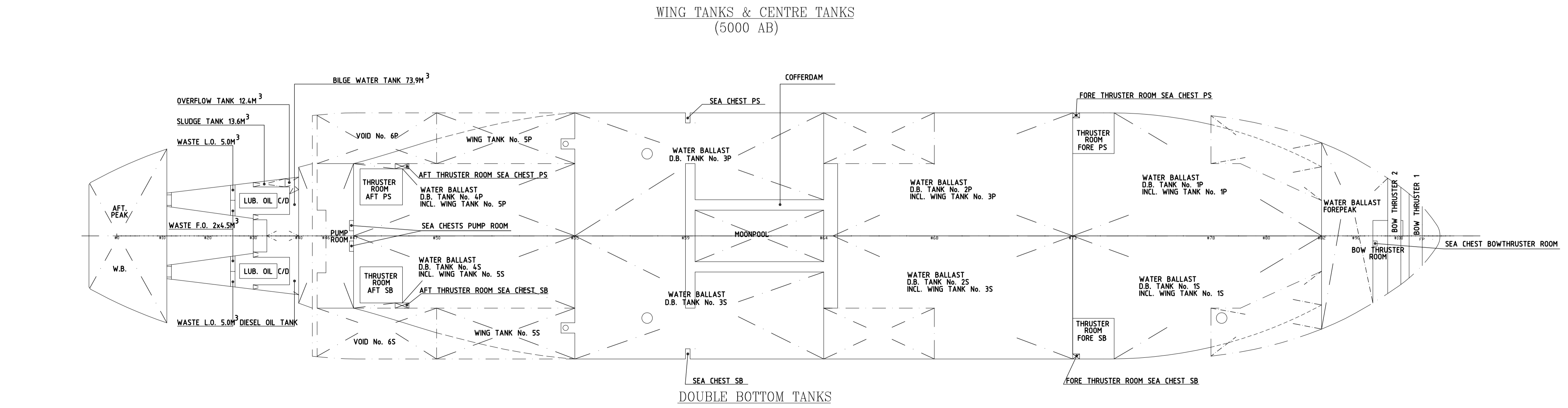
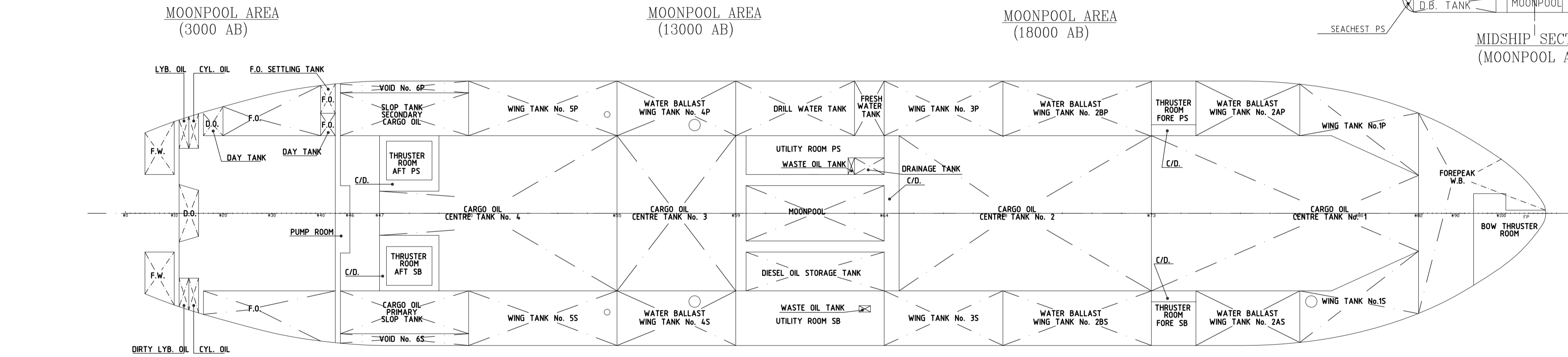
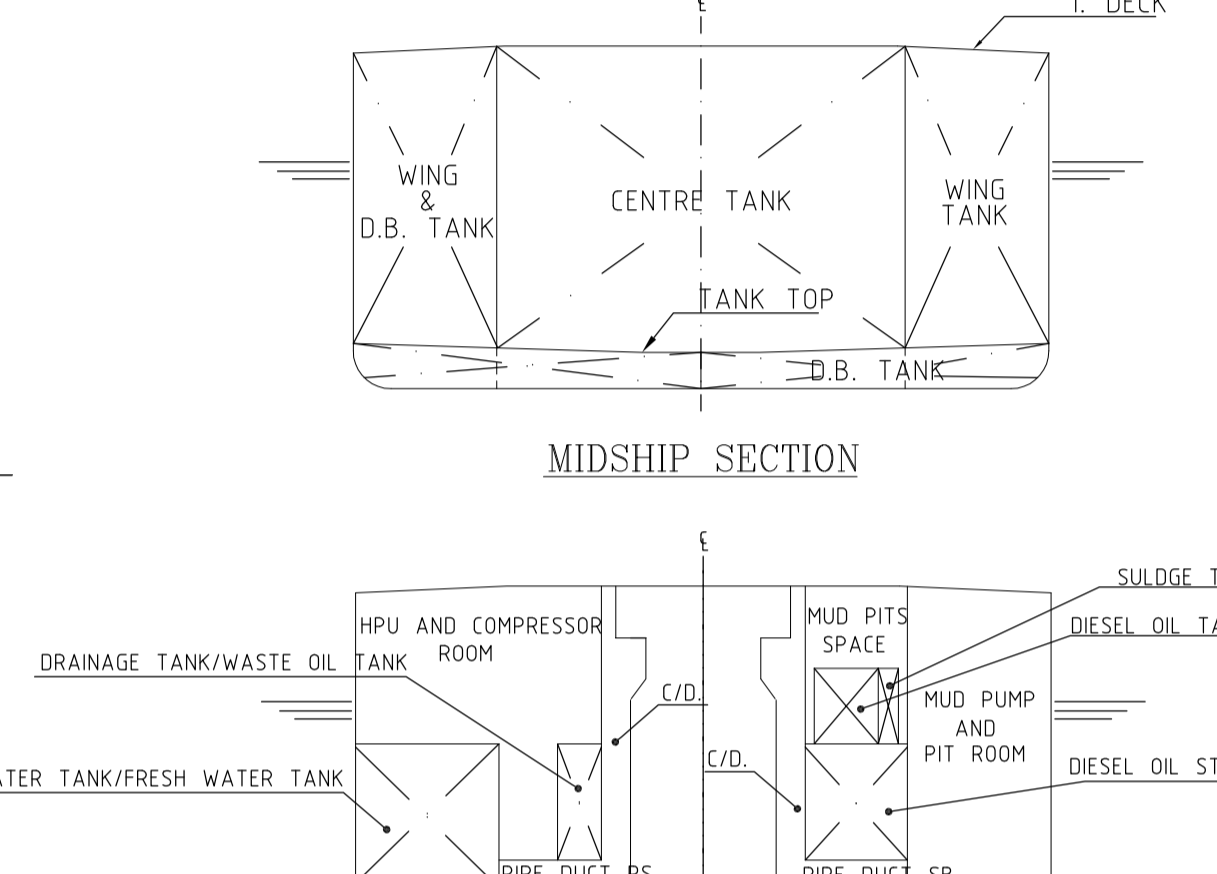
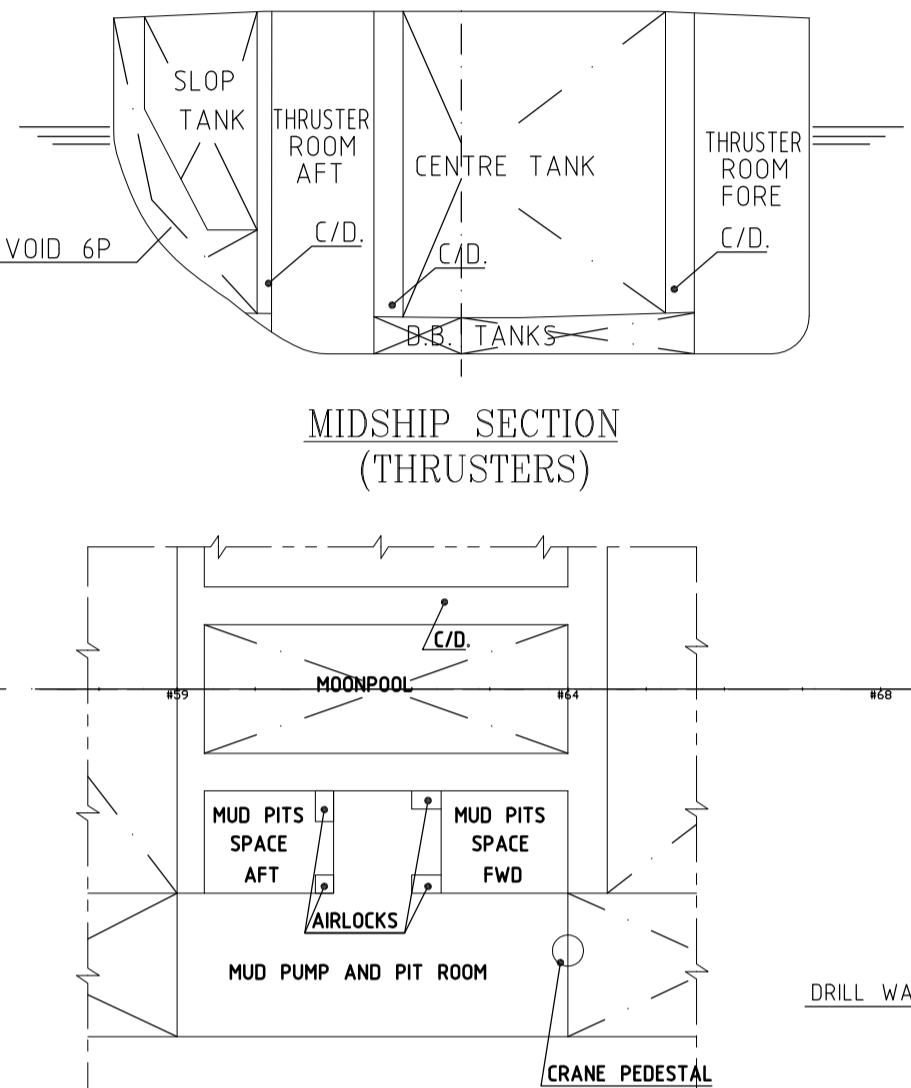
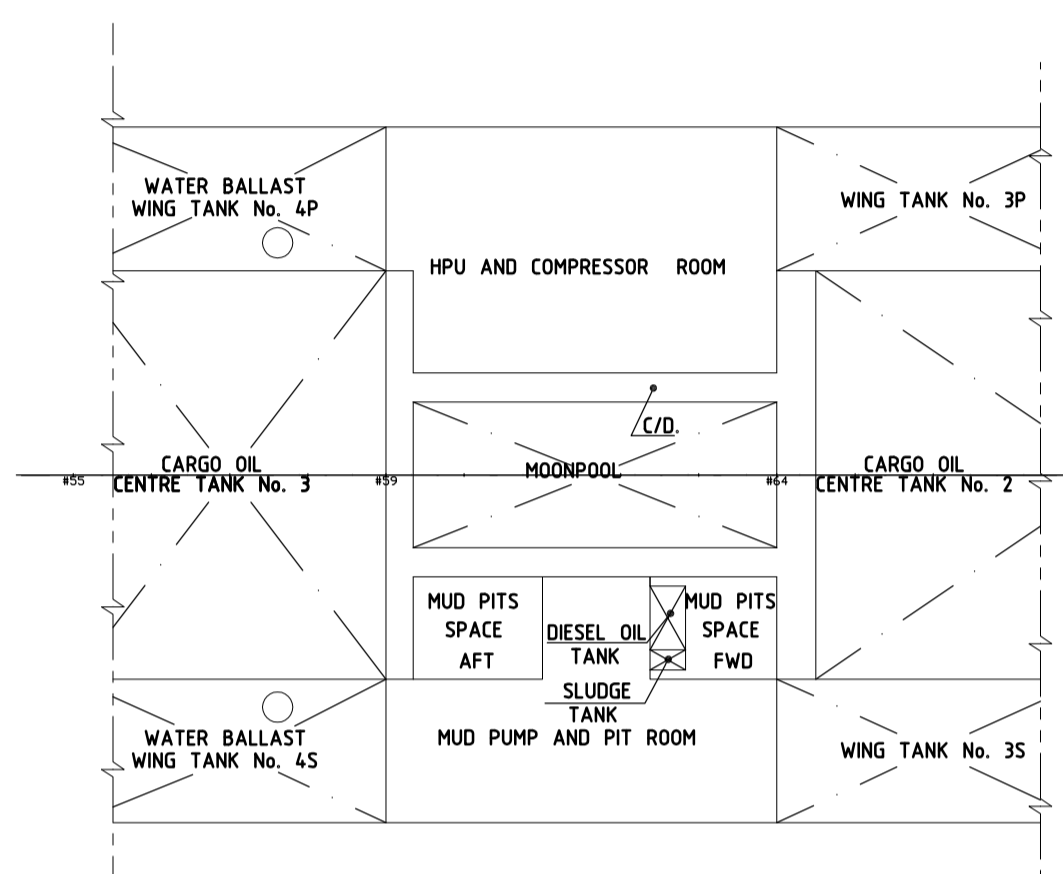
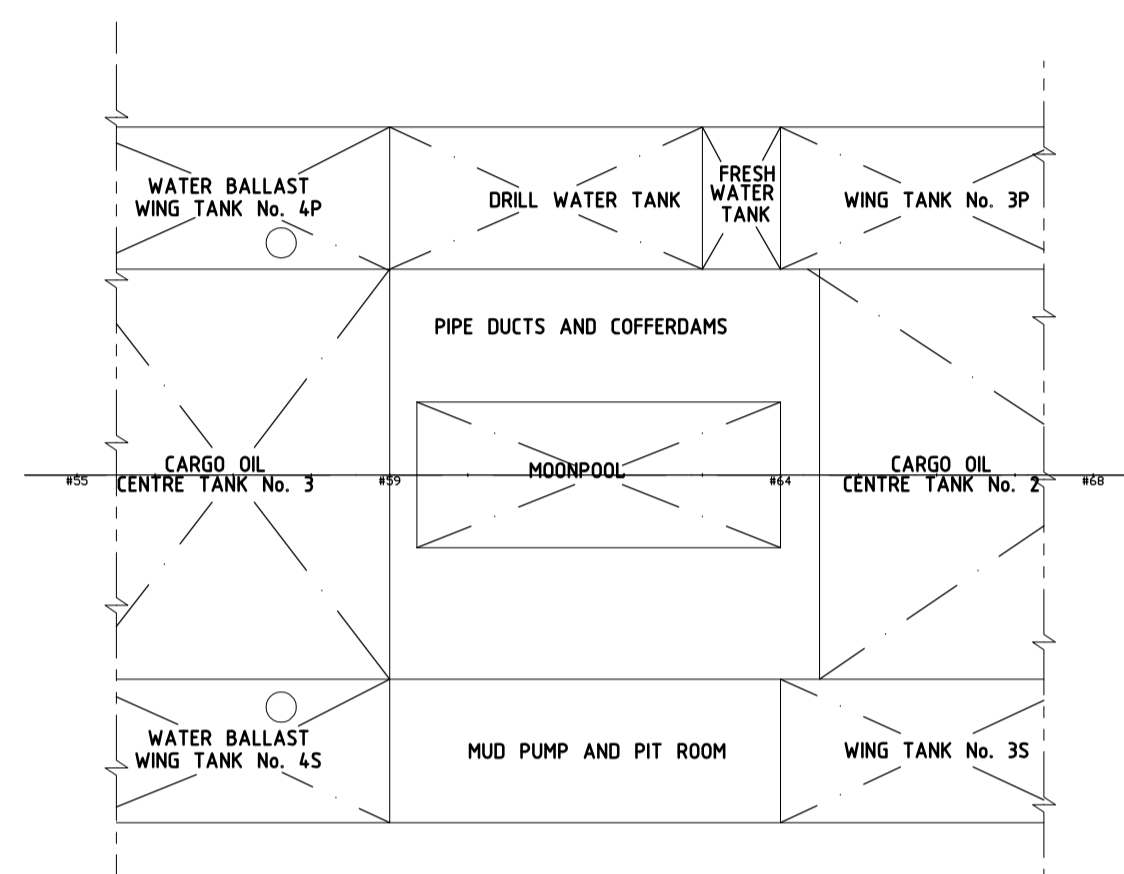
HEAVY FUEL OIL TANKS				
COMPARTMENT	VOL. M ³	100%		TONNES
		98%	99%	
WING TANK IN ENGINE ROOM	S FRS. 16-43	831.4	814.8	765.9
WING TANK IN ENGINE ROOM	P FRS. 20-40	633.8	621.1	583.9
DAY TANK IN ENGINE ROOM	P FRS. 40-43	95.9	94.0	88.3
SETTLING TANK IN ENGINE ROOM	P FRS. 40-43	112.7	110.4	103.8
WASTE TANK IN ER DB	S FRS. 25-26	5.9	5.8	5.4
WASTE TANK IN ER DB	P FRS. 25-26	5.9	5.8	5.4
		1,685.6	1,651.9	1,552.8

LUBRICATING OIL TANKS				
COMPARTMENT	VOL. M ³	100%		TONNES
		98%	99%	
D.B. TANK UNDER MAIN ENGINE	S FRS. 27-35	17.7	17.3	15.6
D.B. TANK UNDER MAIN ENGINE	P FRS. 27-35	17.7	17.3	15.6
CYL. OIL TANK UNDER MAIN ENGINE	S-P FRS. 13-15	103.8	101.7	91.6
LYB. OIL TANK UNDER MAIN ENGINE	P FRS. 11-13	42.0	41.2	37.0
DIRTY LUB. OIL TANK UNDER MAIN ENGINE	S FRS. 11-13	50.7	49.7	44.7
WASTE TANK IN ER DB	S FRS. 25-26	6.5	6.4	5.7
WASTE TANK IN ER DB	P FRS. 25-26	6.5	6.4	5.7
		244.9	240.0	216.0

MISC TANKS				
COMPARTMENT	VOL. M ³	100%		TONNES
		98%	99%	
BILGE TANK	P FRS. 30-40	65.7	64.4	64.4
DRAIN TANK IN MOONPOOL AREA	P FRS. 63-64	113.0	110.7	110.7
DRILL WATER TANK	P FRS. 59-63	1,766.4	1,731.1	1,731.1
OVERFLOW TANK IN ER	P FRS. 37-40	12.4	12.2	12.2
WASTE TANK IN MOONPOOL AREA	P FRS. 63	24.6	24.1	24.1
FO WASTE TANK IN UTILITY ROOM SB	S FRS. 63-64	2.7	2.7	2.7
SLUDGE TANK IN ER	P FRS. 30-37	13.8	13.5	13.5
SLUDGE TANK IN MUD PIT AREA	S FRS. 62-63	15.9	15.5	15.5
		2,014.4	1,909.7	2,014.1

VOIDS				
COMPARTMENT	VOL. M ³	100%		TONNES
		98%	99%	
MOONPOOL COFFERDAM & PIPE VOIDS (P&S)	FRS. 59-64,5	5,358.5	5,251.3	5,381.6
AFT THRUSTERS COFFERDAMS (P&S)	FRS. 47-49	1,845.6	1,808.7	1,853.9
FWD THRUSTERS COFFERDAMS (P&S)	FRS. 73-74,5	581.2	569.6	583.8
VOID TANKS No. 6	(S) FRS. 43-50	1,371.3	1,343.9	1,371.5
VOID TANKS No. 6	(P) FRS. 43-50	1,360.3	1,333.1	1,366.4
HRP TRUNKS (P&S)	FRS. 59,68	208.3	204.1	209.2
AFT MUD PIT AREA (S)	FRS. 59-61	590.6	578.8	593.3
FWD MUD PIT AREA (S)	FRS. 62-64	527.2	516.7	529.6
AIRLOCKS (S)	FRS. 61-62	23.4	22.9	23.5
		11,866.4	11,629.1	11,919.8

WATER BALLAST TANKS				
COMPARTMENT	VOL. M ³	100%		TONNES
		98%	99%	
FORE PEAK TANK	FRS. 82-FORE	6,740.7	6,605.9	6,710
No. 1 WING & DB TANKS	S-P FRS. 73-82	10,201.6	9,997.6	10,247.5
No. 2 WING TANKS, No. 2A	S-P FRS. 74,5-78	6,167.6	6,044.5	6,195.4
No. 2 WING TANKS, No. 2B	S-P FRS. 68-73	9,338.6	9,151.8	9,380.6
No. 3 WING & No. 2 DB TANKS	S-P FRS. 64-73	13,862.7	13,801.4	13,721.5
No. 3 DOUBLE BOTTOM TANKS	S-P FRS. 55-64	4,827.4	4,730.8	4,849.1
No. 4 WING TANKS, No. 4	S-P FRS. 55-59	7,354.6	7,207.5	7,387.7
No. 5 WING & No. 4 DB TANKS	S-P FRS. 47-55	12,351.8	12,104.8	12,407.4
AFT PEAK TANK	S-P FRS. 57,88-11	15,70.0	15,38.6	15,71.0
		71,615.0	70,182.7	71,937.3



03	01/04/08	Updated acc. to struct. dwg.	GM	RHM
02	08/12/07	Updated acc. to PSA	GM	RHM
01	24/10/07	For approval	GM	RHM
		Rev. for issue	Prep.	Checked
			Accepted	

DELTA MARIN
 DELTAMARIN LTD
 FIN-21200 RABOUD

PS-05 / DYNAMIC PRODUCER

Capacity Plan
 Scale: 1:500
 DPL-02-C-00-XX-0001
 Rev. No. 00, Date XX, Rev. No. FA

0.3