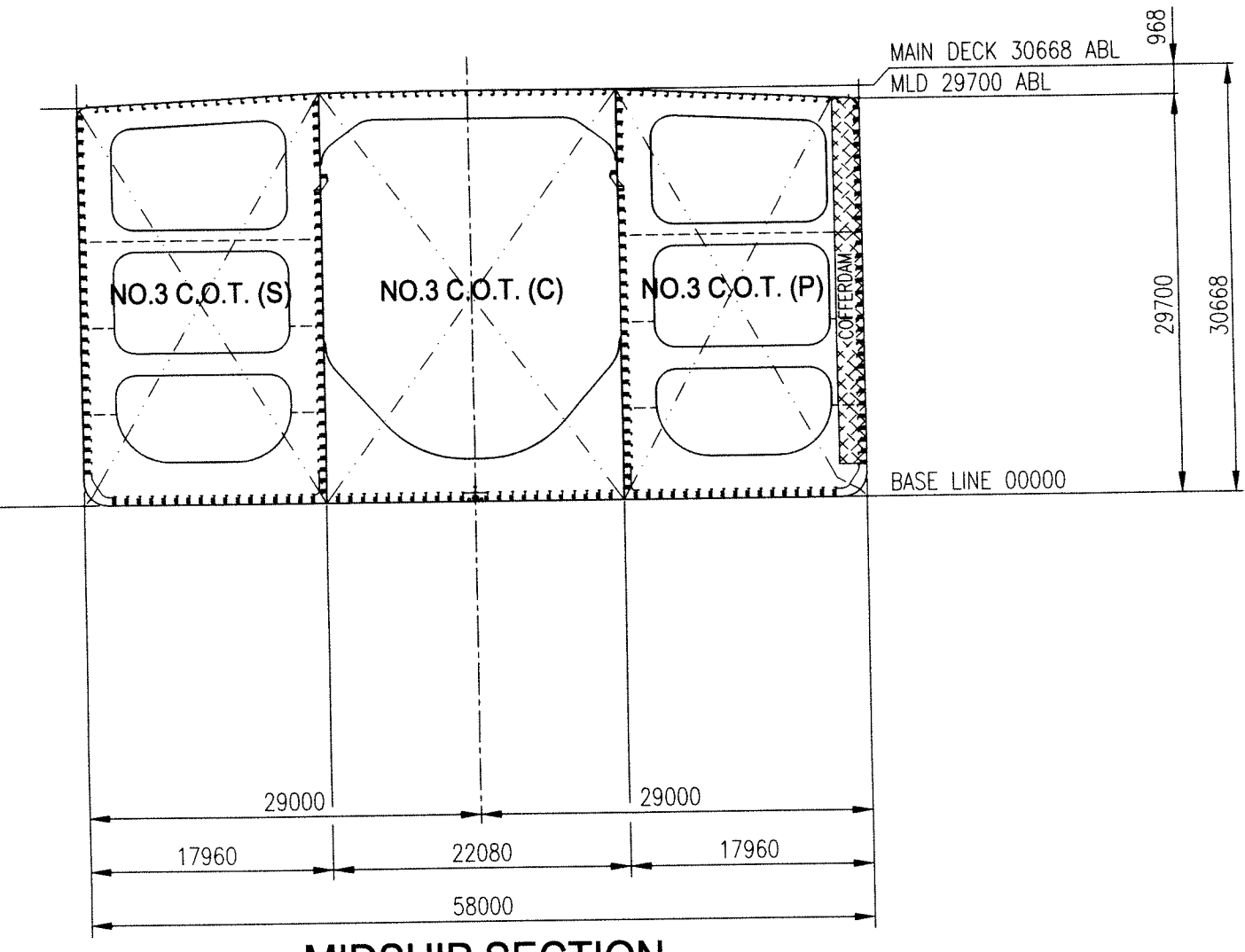
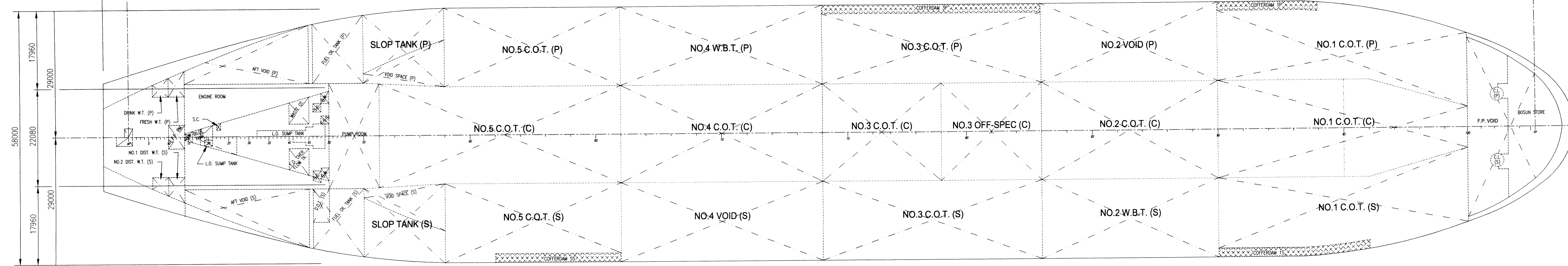


STARBOARD SIDE PROFILE



MIDSHIP SECTION
(LOOKING AFT)



TANK LAYOUT PLAN

CARGO OIL								
TANK DESCRIPTION	FRAME NO.	VOLUME 100% (m ³)	VOLUME 98% (m ³)	VOLUME 98% (Bbls)	LCG (m-AP)	VCG (m-BL)	TCG (m-CL)	FS INERTIA
1 C.O.T. (C)	90-100	33,369	32,702	209,891	269.820F	15.532	0.000	33,153
1 C.O.T. (P)	90-100	25,306	24,800	159,175	271.868F	16.012	17.650P	20,745
1 C.O.T. (S)	90-100	24,422	23,934	153,614	272.005F	15.960	17.322S	18,449
2 C.O.T. (C)	83-90	26,611	26,079	167,383	224.625F	15.411	0.000	30,842
3 C.O.T. (C)	74-79	17,860	17,503	112,339	168.975F	15.411	0.000	20,705
3 C.O.T. (P)	74-83	23,562	23,091	148,205	180.275F	15.155	18.976P	23,570
3 C.O.T. (S)	74-83	26,441	25,912	166,314	180.275F	15.130	19.958S	35,248
4 C.O.T. (C)	66-74	30,402	29,794	191,229	133.100F	15.411	0.000	47,948
5 C.O.T. (C)	55-66	38,761	37,986	243,807	81.436F	15.501	0.000	17,386
5 C.O.T. (P)	59-66	19,352	18,965	121,724	91.314F	16.588	19.353P	14,871
5 C.O.T. (S)	59-66	18,211	17,847	114,547	90.942F	16.417	18.815S	17,624
SUBTOTAL		284,297	278,611	1,788,228				
3 OFF-SPEC (C)	79-83	15,203	14,899	95,627	193.550F	15.411	0.000	16,714
SUBTOTAL		15,203	14,899	95,627				
SLOP TANK (P)	55-59	6,315	6,189	39,721	62.279F	19.465	18.900P	6,829
SLOP TANK (S)	55-59	6,315	6,189	39,721	62.279F	19.465	18.900S	6,829
SUBTOTAL		12,630	12,377	79,442				
NET TOTAL		312,130	305,887	1,963,298				

WATER BALLAST								
TANK DESCRIPTION	FRAME NO.	VOLUME 100% (m ³)	VOLUME 98% (m ³)	LCG (m-AP)	VCG (m-BL)	TCG (m-CL)	FS INERTIA	SG = 1.025
2 W.B.T. (S)	83-90	21,259	20,834	224.603F	15.150	19.946S	18,937	
4 W.B.T. (P)	66-74	24,223	23,739	133.258F	15.332	19.849P	21,506	
TOTALS		45,482	44,572					

FRESH WATER								
TANK DESCRIPTION	FRAME NO.	VOLUME 100% (m ³)	VOLUME 98% (m ³)	LCG (m-AP)	VCG (m-BL)	TCG (m-CL)	FS INERTIA	SG = 1.000
FRESH WATER TK. (P)	10-14	174.0	170.5	10.86F	27.21	-	-	
DRINK WATER TK. (P)	6-10	140.0	137.2	7.27F	27.36	-	-	
1 DIST. W. TANK (S)	10-14	174.0	170.5	10.86F	27.21	-	-	
2 DIST. W. TANK (S)	6-10	140.0	137.2	7.27F	27.36	-	-	
TOTALS		628.0	615.4					

VOID								
TANK DESCRIPTION	FRAME NO.	VOLUME 100% (m ³)	VOLUME 98% (m ³)	LCG (m-AP)	VCG (m-BL)	TCG (m-CL)	FS INERTIA	SG = 0.950
NO. 2 VOID (P)	83-90	21,259	20,834	224.603F	15.150	19.946P	18,937	
NO. 4 VOID (S)	66-74	24,223	23,739	133.258F	15.332	19.849S	21,506	
NO. 1 COFFERDAM (P)	90-94	1,212	1,188	255.438F	16.763	27.862P	11	
NO. 3 COFFERDAM (P)	74-83	2,905	2,847	180.275F	14.924	27.994P	33	
NO. 1 COFFERDAM (S)	90-96	2,139	2,096	260.922F	17.058	27.370S	48	
NO. 5 COFFERDAM (S)	61-66	1,133	1,110	97.242F	19.326	27.929S	14	
FORE PEAK VOID (C)	100-SF	10,204	10,000	306.694F	15.690	0.000	18,608	
AFT PEAK VOID (C)	SR-14	1,532	1,501	5.880F	20.440	0.000	4,894	
AFT VOID (P)	14-45	2,834	2,777	28.950F	24.041	17.173P	3,830	
AFT VOID (S)	14-45	2,834	2,777	28.950F	24.041	17.173S	3,830	
TOTALS		70,275	68,870					

FUEL OIL / DIESEL OIL							
TANK DESCRIPTION	FRAME NO.	VOLUME 100% (m ³)	VOLUME 98% (m ³)	LCG (m-AP)	VCG (m-BL)	TCG (m-CL)	FS INERTIA
HFO/DIESEL OIL TK (P)	46-55	2,752	2,697	47.293F	21.317	18.473P	3,125
HFO/DIESEL OIL TK (S)	46-55	2,483	2,433	47.293F	21.317	18.473S	3,125
H.F.O. SETT. TANK (S)	54-54	58	57	49.480F	19.890	14.524S	397
H.F.O. SERV. TANK (S)	54-54	36	35	49.480F	19.710	14.488S	487
F.O. OVERFLOW TK (S)	40-45	43	42	38.370F	1.430	2.738S	148
DIESEL OIL TANK (S)	46-50	255	250	43.20F	25.51	-	-
D.O. SERV. TK. (S)	50-52	14	14	45.89F	21.99	-	-
TOTALS		5,641	5,528				

LUBRICATING OIL							
TANK DESCRIPTION	FRAME NO.	VOLUME 100% (m ³)	VOLUME 98% (m ³)	LCG (m-AP)	VCG (m-BL)	TCG (m-CL)	FS INERTIA
L.O. SUMP TANK	32-49	48.4	47.4	39.48F	1.88	-	-
L.O. SETT. TANK (S)	34-37	49.1	48.1	31.95F	23.81	-	-
L.O. STOP. TANK (S)	37-40	49.1	48.1	34.65F	23.81	-	-
NO. 1 CYL. O.S.T. (S)	40-45	81.8	80.2	38.25F	23.81	-	-
NO. 2 CYL. O.S.T. (S)	45-50	81.8	80.2	42.75F	23.81	-	-
TOTALS		310.2	304				

MISCELLANEOUS							
TANK DESCRIPTION	FRAME NO.	VOLUME 100% (m ³)	VOLUME 98% (m ³)	LCG (m-AP)	VCG (m-BL)	TCG (m-CL)	FS INERTIA
BILGE TANK	14-27	59.2	58.0	47.590F	1.45	-	-
BILGE PRIM. TK. (P/A)	39-41	12.3	12.1	41.580F	17.14	-	-
BILGE PRIM. TK. (P/F)	41-43	12.3	12.1	35.190F	17.14	-	-
WASTE OIL TANK (P)	40-45	42.8	41.9	31.560F	1.43	-	-
WASTE OIL SETT. TK. (S)	30-32	9.6	9.4	24.050F	16.71	-	-
E.G.E. WASH D.T. (S)	18-26	52.2	51.2	19.790F	15.94	-	-
SLUDGE TANK (S)	46-49	7.8	7.6	19.790F	9.92	-	-
CASCADE TANK (S)	49-53	16.2	15.9	19.790F	15.80	-	-
STERN TUBE C.T.	11-16	17.1	16.6	19.790F	6.13	-	-
TOTALS		229.5	224.8				

PRINCIPAL PARTICULARS	
LENGTH (O.A.)	330.00M
LENGTH (B.P.)	315.00M
BREADTH (MLD)	58.00M
DEPTH (MLD)	29.70M
SCANTLING DRAFT (MLD)	19.50M

PRELIMINARY FOR PROPOSAL 09 JUL 2008

CONFIDENTIAL AGREEMENT
THIS DRAWING AND ITS CONTENTS, SPECIFICATIONS AND DESIGN CONTENTS ARE PROPRIETARY INFORMATION AND MAY NOT BE REPRODUCED, TRANSFERRED OR ISSUED FOR MANUFACTURE WITHOUT WRITTEN CONSENT FROM MODEC INTERNATIONAL LLC.

MODEC
MODEC INTERNATIONAL LLC
A Subsidiary of MODEC INC.
Houston, Texas USA

PETROBRAS
PETROLEO BRASILEIRO S.A.

DATE	09JUL08	FOR PROPOSAL	DATE	24JUN2008	SCALE	1:500
REV	A	29JUN08	REV	A	29JUN08	PRELIMINARY

DESIGNED BY	A. CRUZ	DATE	24JUN2008
DRAWN BY	D. AMARO	SCALE	1:500

PROJECT	FPSO - TUPI PILOT
TITLE	TANK CAPACITY PLAN
MODEC DWG NO.	0262-MI20-00D1-0110
REV	B