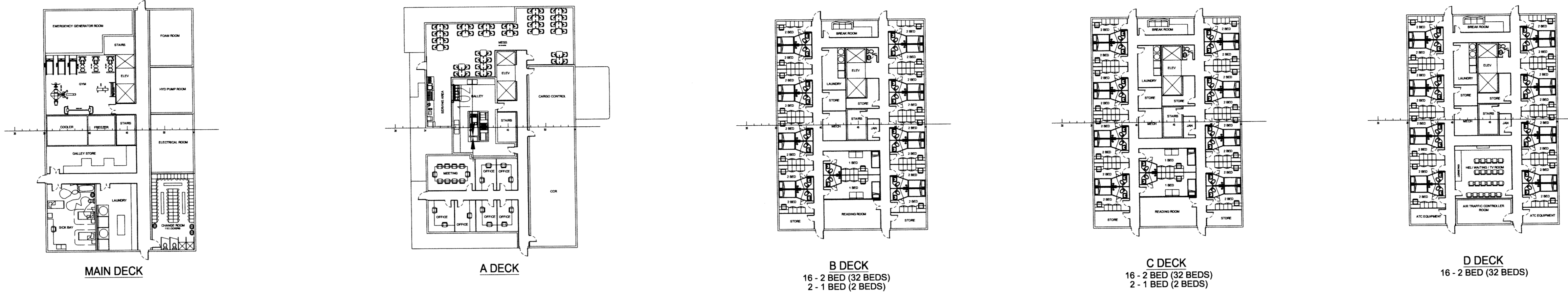
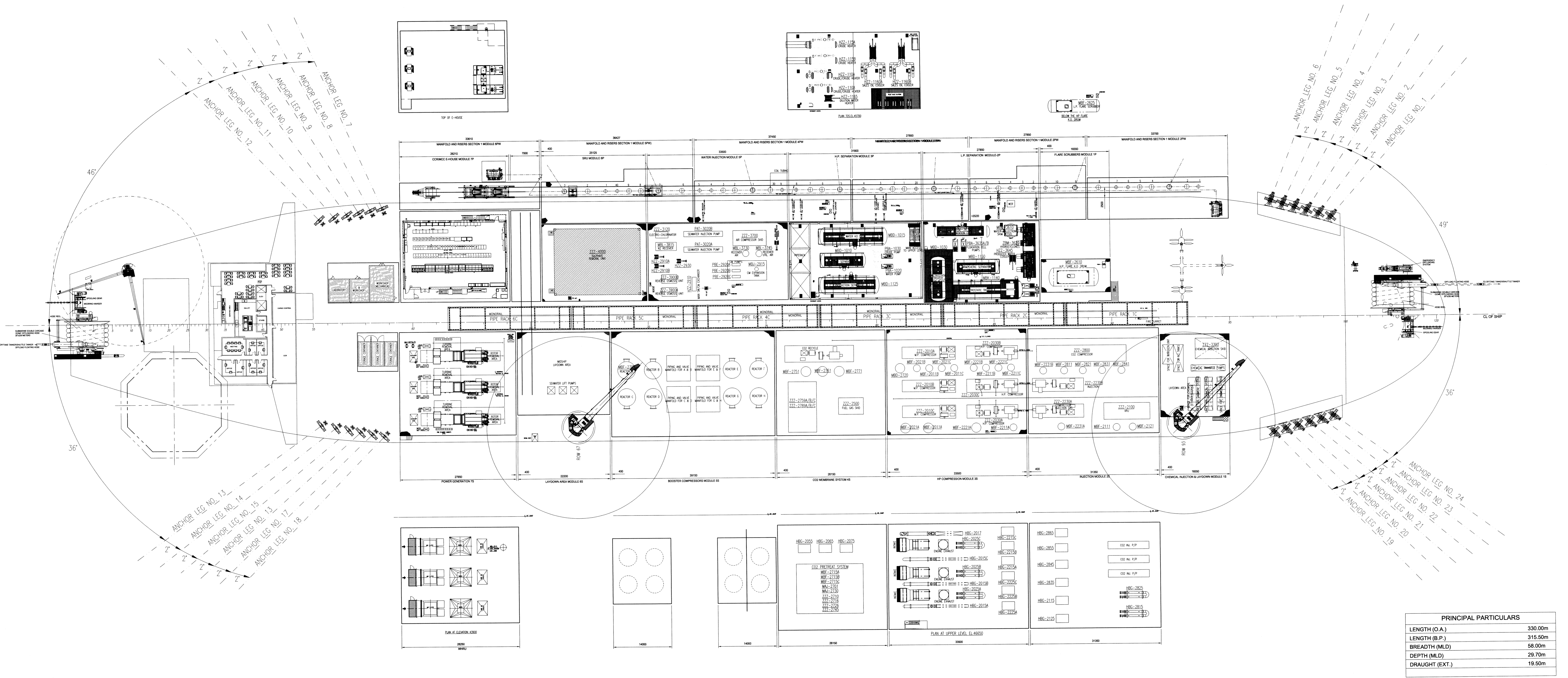


FWD



ACCOMMODATIONS PLANS



TOPSIDE PLAN

PRINCIPAL PARTICULARS	
LENGTH (O.A.)	330.00m
LENGTH (B.P.)	315.50m
BREADTH (MID)	58.00m
DEPTH (MID)	29.70m
DRAUGHT (EXT.)	19.50m

HOLDS
 1. SHIP PROFILE
 2. MODULE SUPPORT LOCATION PLAN (MAIN DECK)

PRELIMINARY
 DRAFTING IN PROGRESS
 09 JUN 2008

CONFIDENTIAL AGREEMENT THIS DRAWING AND ITS CONTENTS, SPECIFICATIONS AND DESIGN CONTENTS ARE PROPRIETARY INFORMATION AND MAY NOT BE REPRODUCED, TRANSFERRED OR ISSUED FOR MANUFACTURE WITHOUT WRITTEN CONSENT FROM MODEC INTERNATIONAL LLC.		 MODEC INTERNATIONAL LLC A Subsidiary of MODEC INC. Houston, Texas USA		 PETROLEO BRASILEIRO S.A. PETROBRAS	
DRAWN BY: R. LAWRENCE DATE: 09 JUN 2008		DESIGNED BY: D. RYU SCALE: 1:300		CLIENT: FPSO - TUPI PILOT PROJECT: OVERALL GENERAL ARRANGEMENT	
CHECKED BY: [Signature] DATE: 0262-MI20-0001-0100-00-A.dwg		APPROVED BY: [Signature]		MODEC ORG NO: 0262-MI20-00D1-0100 REV: A	