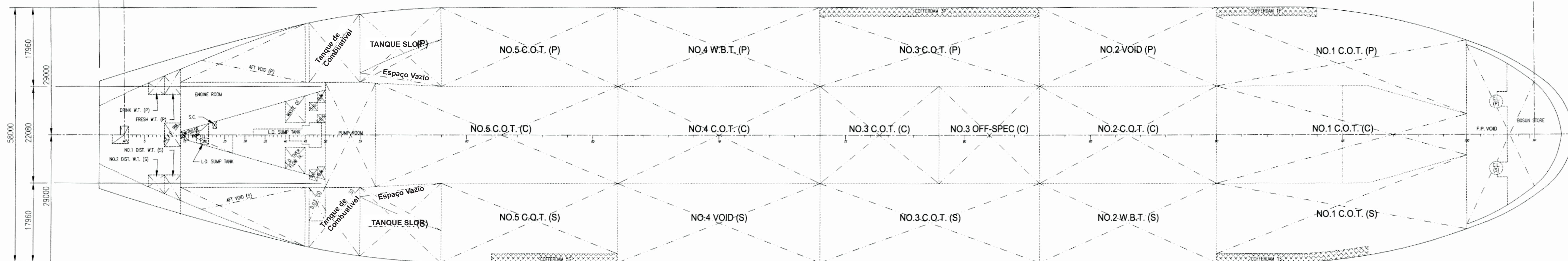


PERFIL DE BORESTE



PLANTA DE TANCAGEM

TRADUÇÃO DOS TERMOS EM INGLÊS	
(P) PORTSIDE	BOMBORDO
(S) STARBOARD	BORESTE
AFT	RÉ
COFFERDAM	COFERDAM
COT - CARGO OIL TANK	TANQUE DE ÓLEO DE CARGA
DIST W TANK	TANQUE DE ÁGUA DESTILADA
DRINK WATER	ÁGUA POTÁVEL
FORE	FRENTE
FRESH WATER	ÁGUA DOCE
OFF - SPEC	ÁGUA SEM ESPECIFICAÇÃO
OVER FLOW	TRANSBORDO
PEAK	COMPARTIMENTO
STOR TANK	TANQUE DE ARMAZENAMENTO
SUMP	POCETO
VOID	ESPAÇO VAZIO
WBT - WATER BALLAST TANK	TANQUE DE ÁGUA DE LASTRO
WASTE OIL	EFLUENTE OLEOSA
E.G.E WASH D.T	TANQUE DE ÓLEO SUJO
CASCADE TANK	TANQUE DE BORRA SÓLIDA
CYL O.S.T	CILINDRO DE ÓLEO LUBRIFICANTE

ÓLEO DE CARGA								
DESCRIÇÃO DO TANQUE	FRAME NO.	VOLUME 100% (m ³)	VOLUME 98% (m ³)	VOLUME 95% (m ³)	LOG (m-AP)	VCG (m-BL)	TCG (m-CL)	FS INERTIA
1 C.O.T. (C)	90-100	33,369	32,702	209,891	269,820F	15,532	0,000	33,153
1 C.O.T. (P)	90-100	25,306	24,800	159,175	271,868F	16,012	17,650P	20,745
2 C.O.T. (S)	90-100	24,422	23,934	153,614	272,005F	15,960	17,322S	18,449
2 C.O.T. (C)	85-90	26,611	26,079	167,383	224,625F	15,411	0,000	30,842
3 C.O.T. (C)	74-79	17,860	17,503	112,339	168,975F	15,411	0,000	20,705
3 C.O.T. (P)	74-83	23,562	23,091	148,205	180,275F	15,155	18,976P	23,570
3 C.O.T. (S)	74-83	26,441	25,912	166,314	180,275F	15,130	19,958S	35,248
4 C.O.T. (C)	66-74	35,402	34,794	191,229	133,100F	15,411	0,000	47,948
4 C.O.T. (C)	55-66	38,761	37,986	243,807	81,436F	15,501	0,000	17,386
5 C.O.T. (P)	59-66	19,352	18,965	121,724	91,314F	16,588	19,353P	14,871
5 C.O.T. (S)	59-66	18,211	17,847	114,547	90,942F	16,417	18,815S	17,624
SUBTOTAL		284,297	278,611	1,788,228				
3 OFF-SPEC (C)	79-83	15,203	14,899	95,627	193,550F	15,411	0,000	16,714
SUBTOTAL		15,203	14,899	95,627				
SLOP TANK (P)	55-59	6,315	6,189	39,721	62,279F	19,445	18,900P	6,829
SLOP TANK (S)	55-59	6,315	6,189	39,721	62,279F	19,445	18,900S	6,829
SUBTOTAL		12,630	12,377	79,441				
NET TOTAL		312,130	306,887	1,963,298				

ÁGUA DE LASTRO							
DESCRIÇÃO DO TANQUE	FRAME NO.	VOLUME 100% (m ³)	VOLUME 98% (m ³)	LOG (m-AP)	VCG (m-BL)	TCG (m-CL)	FS INERTIA
2 W.B.T. (S)	83-90	21,259	20,834	224,603F	15,150	19,948S	18,937
4 W.B.T. (P)	66-74	24,223	23,739	133,258F	15,332	19,849P	21,506
TOTALS		45,482	44,572				

ÁGUA DOCE							
DESCRIÇÃO DO TANQUE	FRAME NO.	VOLUME 100% (m ³)	VOLUME 98% (m ³)	LOG (m-AP)	VCG (m-BL)	TCG (m-CL)	FS INERTIA
Água doce TK. (P)	10-14	174,0	170,5	10,86F	27,21	-	-
DRINK WATER TK. (P)	6-10	140,0	137,2	7,27F	27,21	-	-
1 DIST. W. TANK (S)	10-14	174,0	170,5	10,86F	27,21	-	-
2 DIST. W. TANK (S)	6-10	140,0	137,2	7,27F	27,21	-	-
TOTALS		628,0	615,4				

ESPAÇOS VAZIOS								
DESCRIÇÃO DO TANQUE	FRAME NO.	VOLUME 100% (m ³)	VOLUME 98% (m ³)	LOG (m-AP)	VCG (m-BL)	TCG (m-CL)	FS INERTIA	
NO. 2 VOID (P)	83-90	21,259	20,834	224,603F	15,150	19,948P	18,937	
NO. 4 VOID (S)	66-74	24,223	23,739	133,258F	15,332	19,849P	21,506	
NO. 1 COFFERDAM (P)	90-94	1,212	1,188	255,438F	16,763	27,863P	11	
NO. 3 COFFERDAM (P)	74-83	2,905	2,847	180,275F	14,924	27,994P	33	
NO. 1 COFFERDAM (S)	90-96	2,139	2,096	260,922F	17,058	27,370S	48	
NO. 5 COFFERDAM (S)	61-66	1,133	1,110	97,249F	19,326	27,929S	14	
FORE PEAK VOID (C)	100-SF	10,204	10,000	306,694F	15,690	0,000	18,608	
AFT PEAK VOID (C)	SR-14	1,532	1,501	5,880F	20,440	0,000	4,894	
AFT VOID (P)	14-45	2,834	2,777	28,950F	24,041	17,173P	3,830	
AFT VOID (S)	14-45	2,834	2,777	28,950F	24,041	17,173S	3,830	
TOTALS		70,275	68,870					

ÓLEO COMBUSTÍVEL E DIESEL								
DESCRIÇÃO DO TANQUE	FRAME NO.	VOLUME 100% (m ³)	VOLUME 98% (m ³)	LOG (m-AP)	VCG (m-BL)	TCG (m-CL)	FS INERTIA	
FO/DIESEL OIL TK (P)	46-55	2,752	2,697	47,293F	21,317	18,473P	3,125	
FO/DIESEL OIL TK (S)	46-55	2,483	2,433	47,293F	21,317	18,473S	3,125	
F.O. SETT. TANK (S)	54-54	58	57	49,480F	19,890	14,524S	397	
F.O. SERV. TANK (S)	54-54	36	35	49,480F	19,710	14,488S	487	
F.O. OVERFLOW TK (S)	40-45	43	42	38,370F	1,430	2,738S	148	
DIESEL OIL TANK (S)	46-50	255	250	43,20F	25,51	-	-	
D.O. SERV. TK. (S)	50-52	14	14	45,89F	21,99	-	-	
TOTALS		5,641	5,528					

ÓLEO LUBRIFICANTE								
DESCRIÇÃO DO TANQUE	FRAME NO.	VOLUME 100% (m ³)	VOLUME 98% (m ³)	LOG (m-AP)	VCG (m-BL)	TCG (m-CL)	FS INERTIA	
L.O. SUMP TANK	32-49	48,4	47,4	39,48F	1,88	-	-	
L.O. SETT. TANK (S)	34-37	49,1	48,1	31,95F	23,81	-	-	
L.O. STOR. TANK (S)	37-40	49,1	48,1	34,65F	23,81	-	-	
NO. 1 CYL. O.S.T. (S)	40-45	81,8	80,2	38,25F	23,81	-	-	
NO. 2 CYL. O.S.T. (S)	45-50	81,8	80,2	42,75F	23,81	-	-	
TOTALS		310,2	304					

VARIADOS								
DESCRIÇÃO DO TANQUE	FRAME NO.	VOLUME 100% (m ³)	VOLUME 98% (m ³)	LOG (m-AP)	VCG (m-BL)	TCG (m-CL)	FS INERTIA	
BUDGE TANK	14-27	59,2	58,0	47,59F	1,45	-	-	
BUDGE PRIM. TK. (P/A)	39-41	12,3	12,1	41,580F	17,14	-	-	
BUDGE PRIM. TK. (P/F)	41-43	12,3	12,1	35,190F	17,14	-	-	
WASTE OIL TANK (P)	40-45	42,8	41,9	31,560F	1,43	-	-	
WASTE OIL SETT. TK. (S)	30-32	9,6	9,4	24,050F	16,71	-	-	
E.G.E. WASH D.T. (S)	18-26	52,2	51,2	19,790F	15,84	-	-	
SLODGE TANK (S)	46-49	7,8	7,6	19,790F	9,92	-	-	
CASCADE TANK (S)	49-53	16,2	15,9	19,790F	15,80	-	-	
STERN TUBE C.T.	11-16	17,1	16,6	19,790F	6,13	-	-	
TOTALS		229,5	224,8					

MEDIDAS PRINCIPAIS	
Comprimento	330,000M
Comprimento	315,000M
Boca Moldada	58,000M
Pontal Moldado	29,700M
Calado Moldado	19,50M

ACORDO CONFIDENCIAL									
De acordo de confidencialidade. Este desenho e seus conteúdos são informações proprietárias e não podem ser reproduzidos, transferidos ou publicados sem autorização por escrito da Modec Internacional LLC.									
MODEC INTERNATIONAL LLC A Subsidiary of MODEC INC. Houston, Texas USA									
DRAWN BY: D. AMARO CHECKED BY: A. CRUZ DATE: 24 JUNE 2008 SCALE: 1:500					PROJECT: FPSO - PILOTO DE TUPI TITLE: II.2.4-2 - PLANTA DE TANCAGEM DRAWING NO.: 0262-MI20-0001-0110-00-B.dwg REV: B				
REV. DATE. REVISION DESCRIPTION. ORG. CHKD. LDE. EM.									