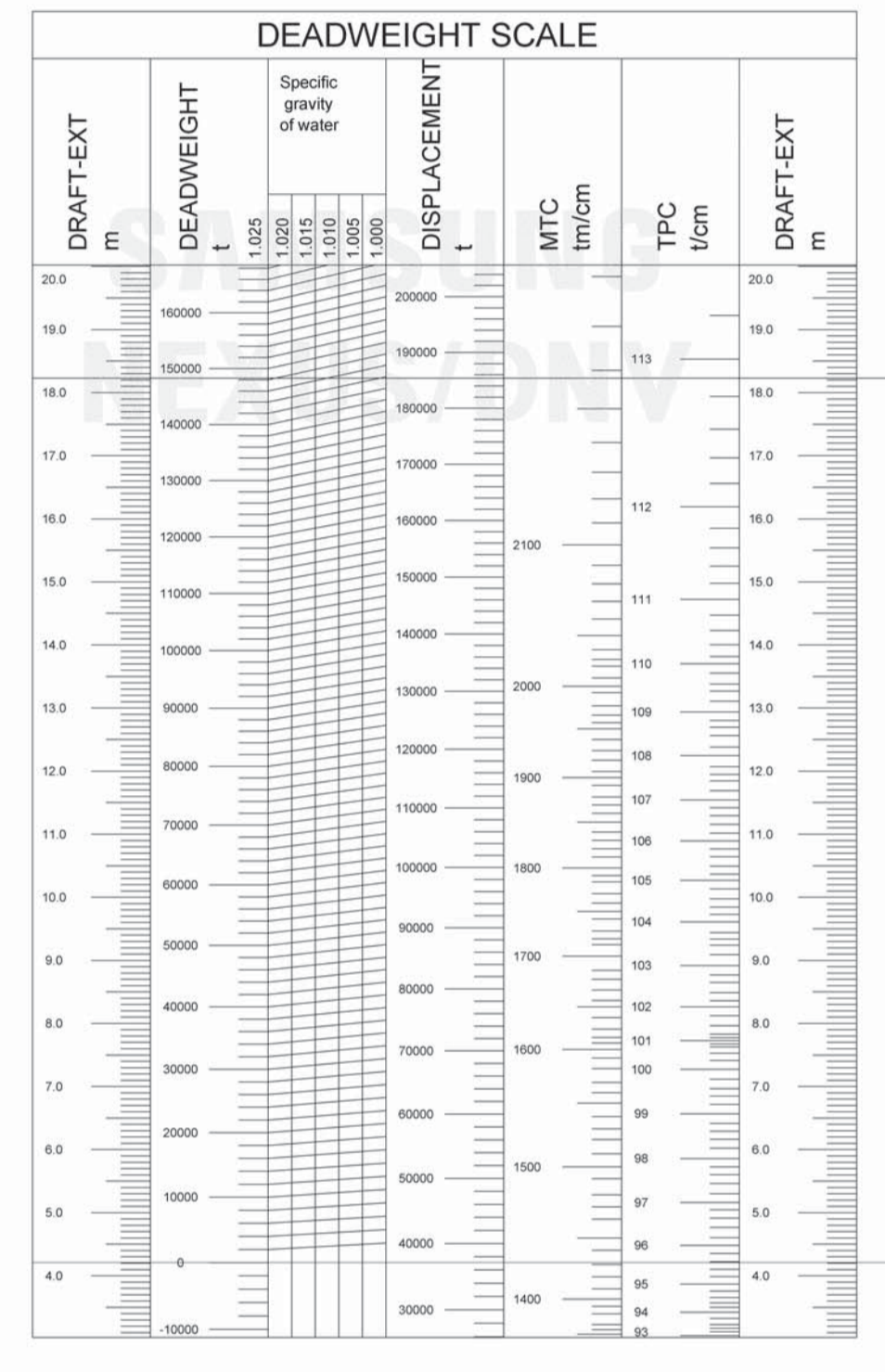
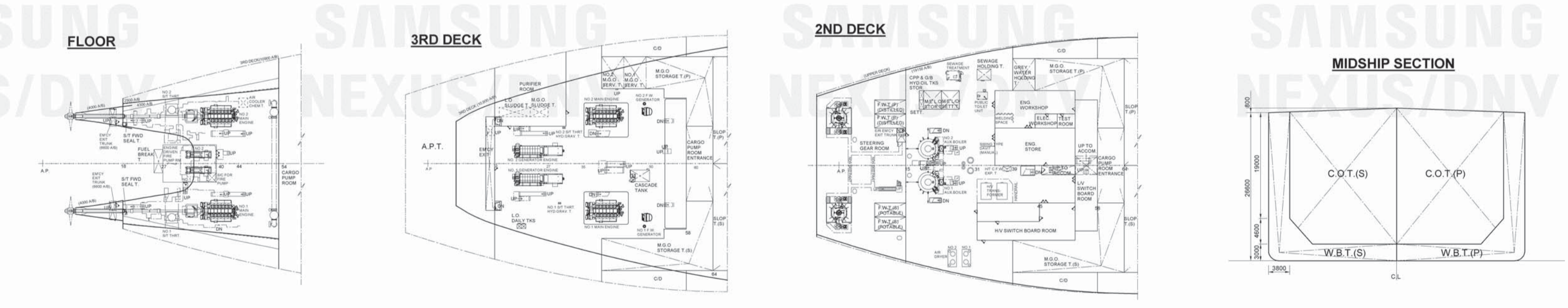
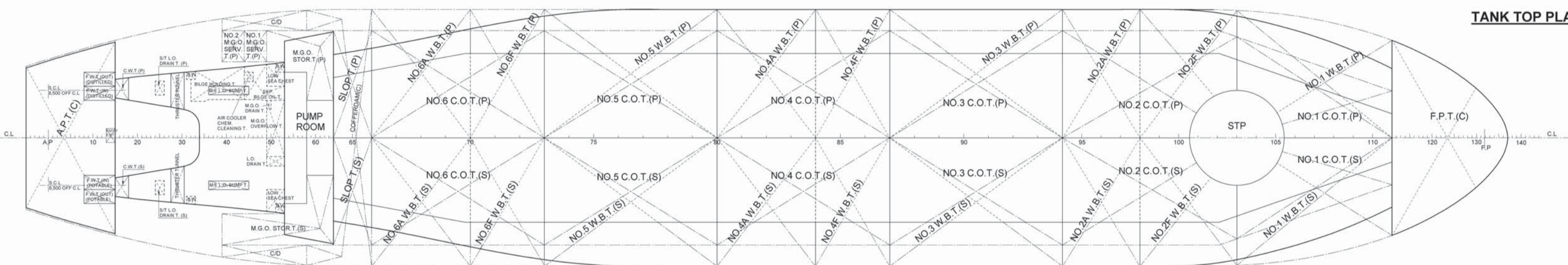
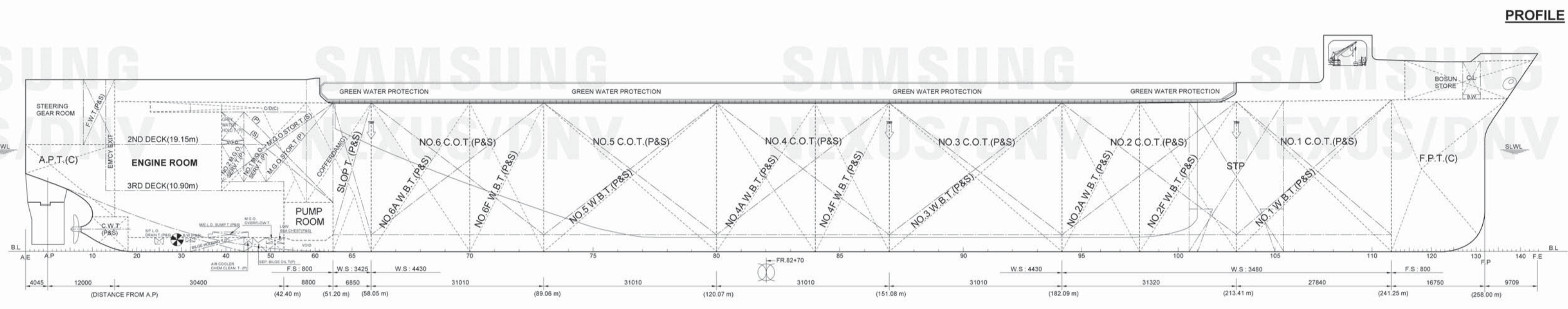


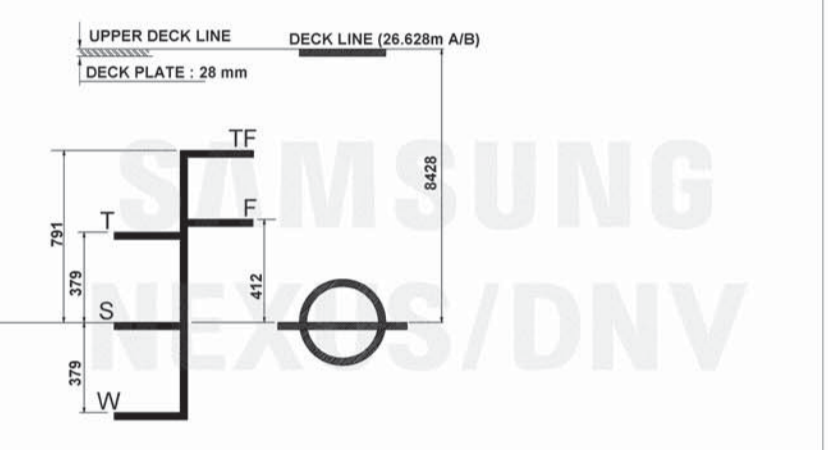
SUMMARY TABLE FOR TANK CAPACITY

Summary table for tank capacity, categorized by oil tanks, fresh water tanks, and miscellaneous tanks. Columns include compartment, location, volume, height, and capacities.

CAPACITY PLAN WITH DWT SCALE



REVISION HISTORY table with columns for Rev., Date, Reason for issue, Prepared by, Checked by, and Approved by.



FREEBOARD, DRAFT & DEADWEIGHT TABLE with columns for freeboard, draft, deadweight, and displacement for different conditions.

LENGTH O.A. 271.754 m, LENGTH B.P. 258.0 m, BREADTH (MOULDED) 46.0 m, DEPTH (MOULDED) 26.6 m, DESIGNED DRAUGHT (MOULDED) 18.2 m, SCANTLING DRAUGHT (MOULDED) 18.2 m.

Registration: NIS, Hull No.: 1716, 9399932, Department: 220, Ship Type: 950,000 bbb FPSO, Class: DNV, Approved by: W.H. Cho, Document Title: CAPACITY PLAN WITH DWT SCALE.